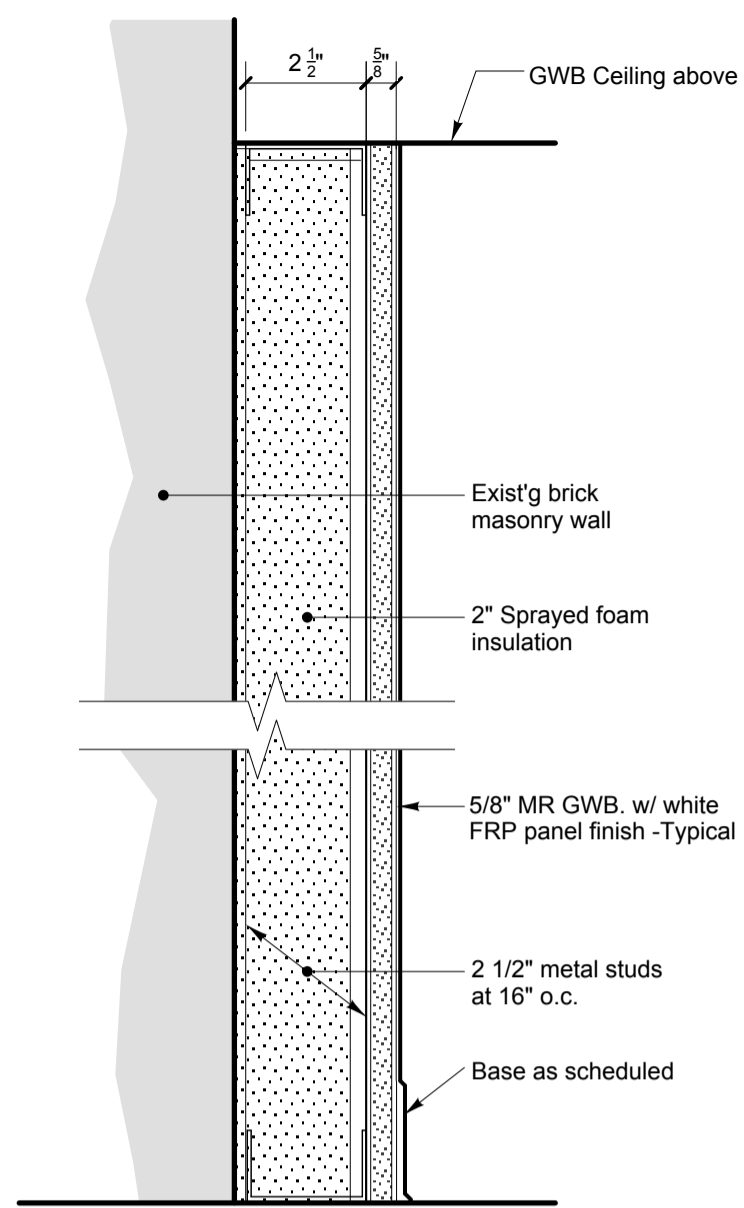


4 Typical Partition @ Toilet Rooms  
As Shown

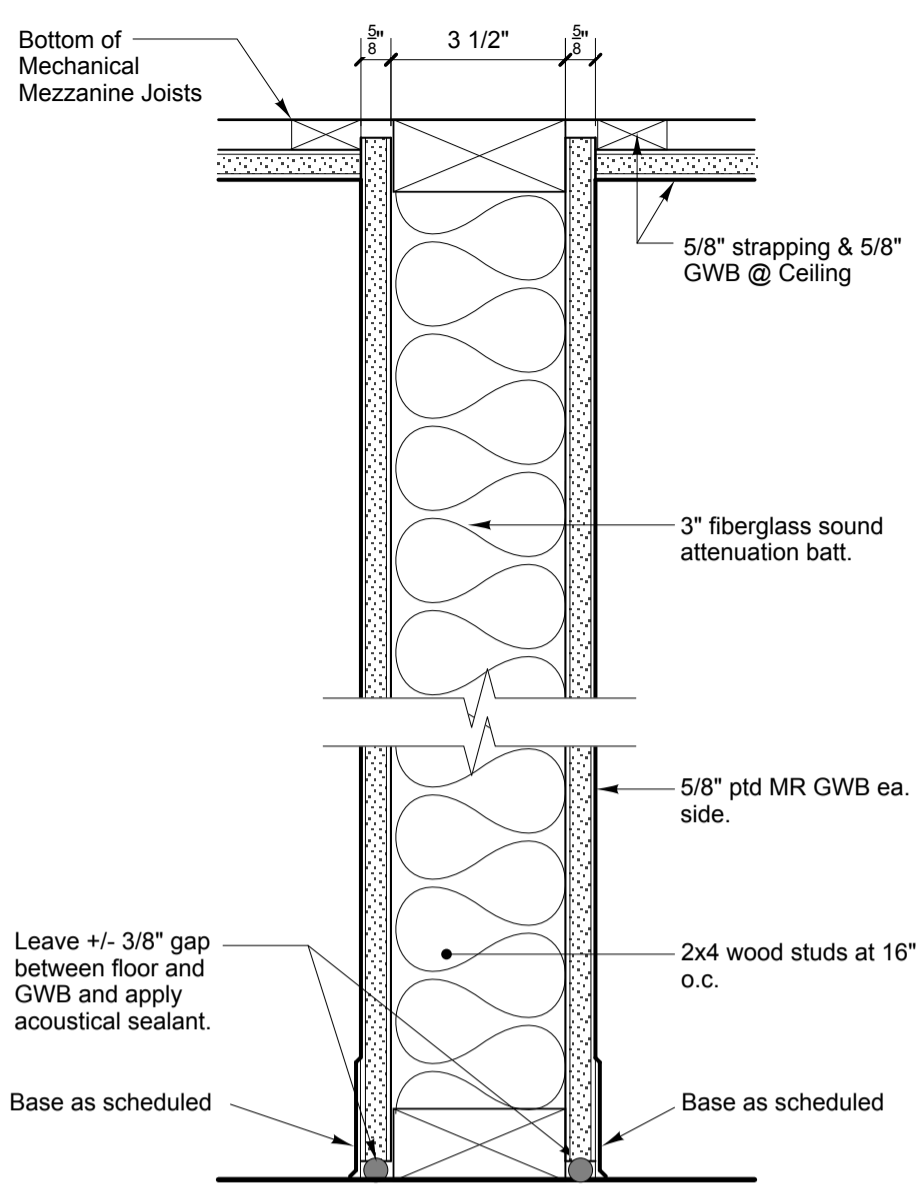
4A SAME AS 4 EXCEPT ADD FRP PANELS @ KITCHEN SIDE  
As Shown



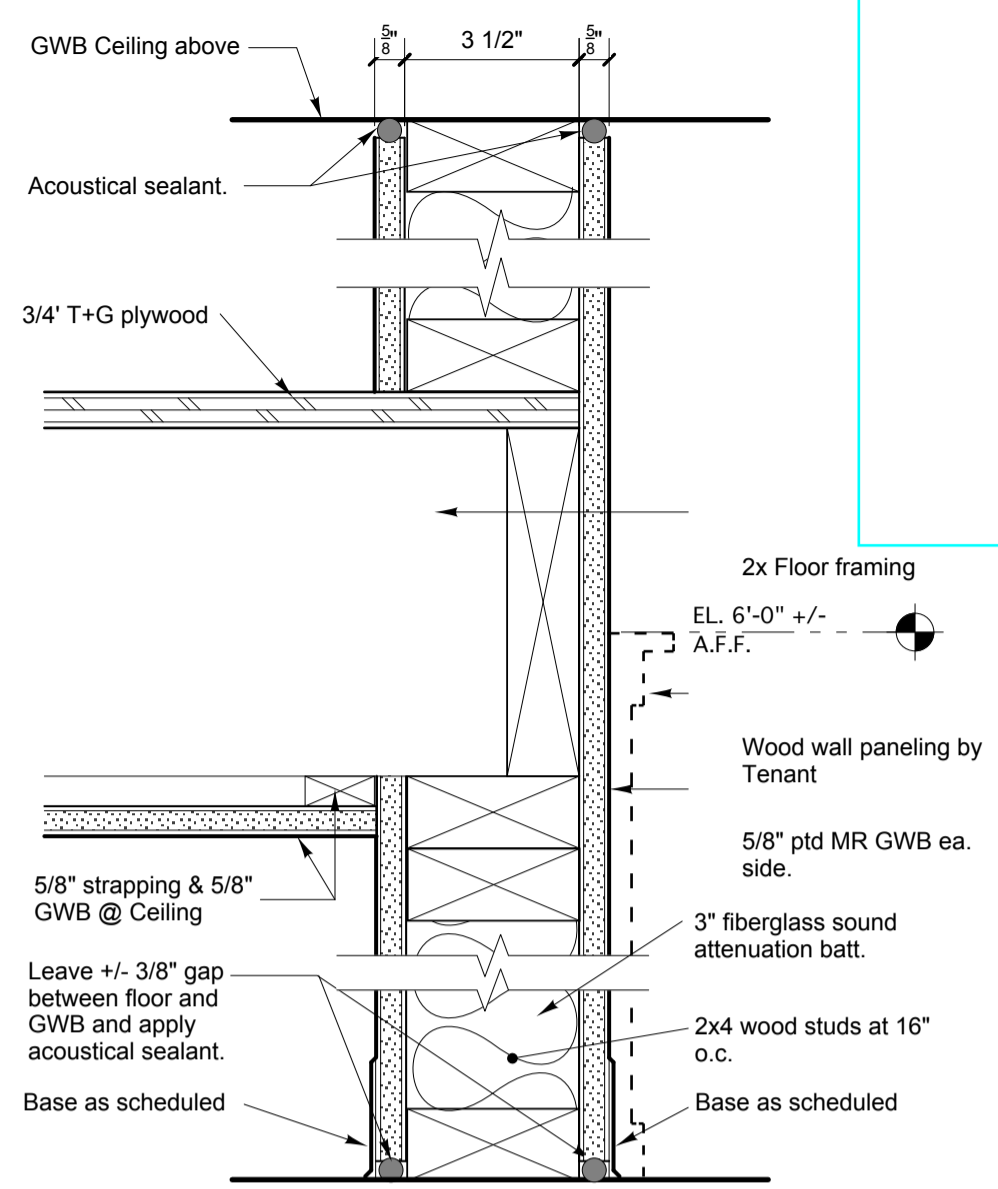
3 Typical Partition @ Exist'g Masonry Walls  
As Shown

3a SAME AS 3 EXCEPT NO INSULATION

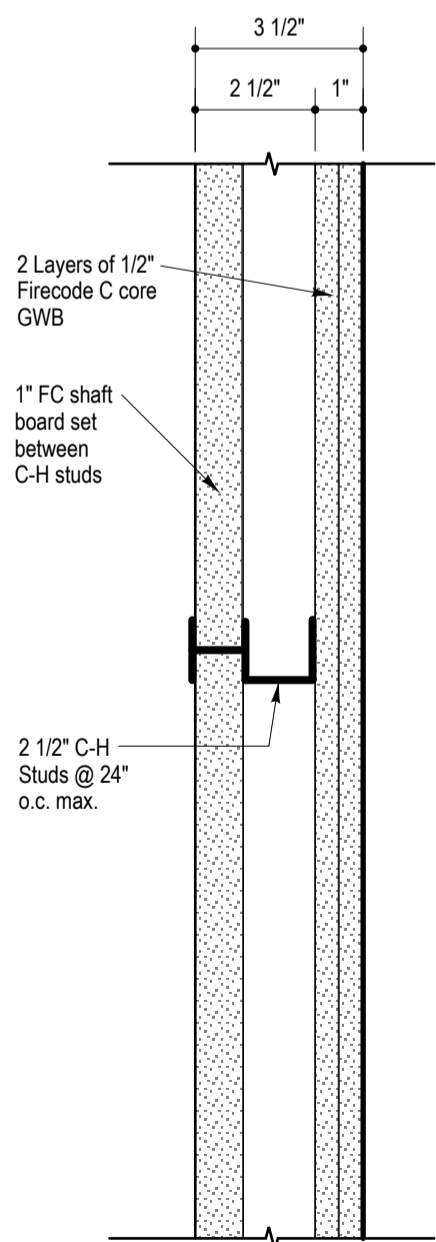
3b SAME AS 3 EXCEPT NO INSULATION & NO FRP PANEL FINISH



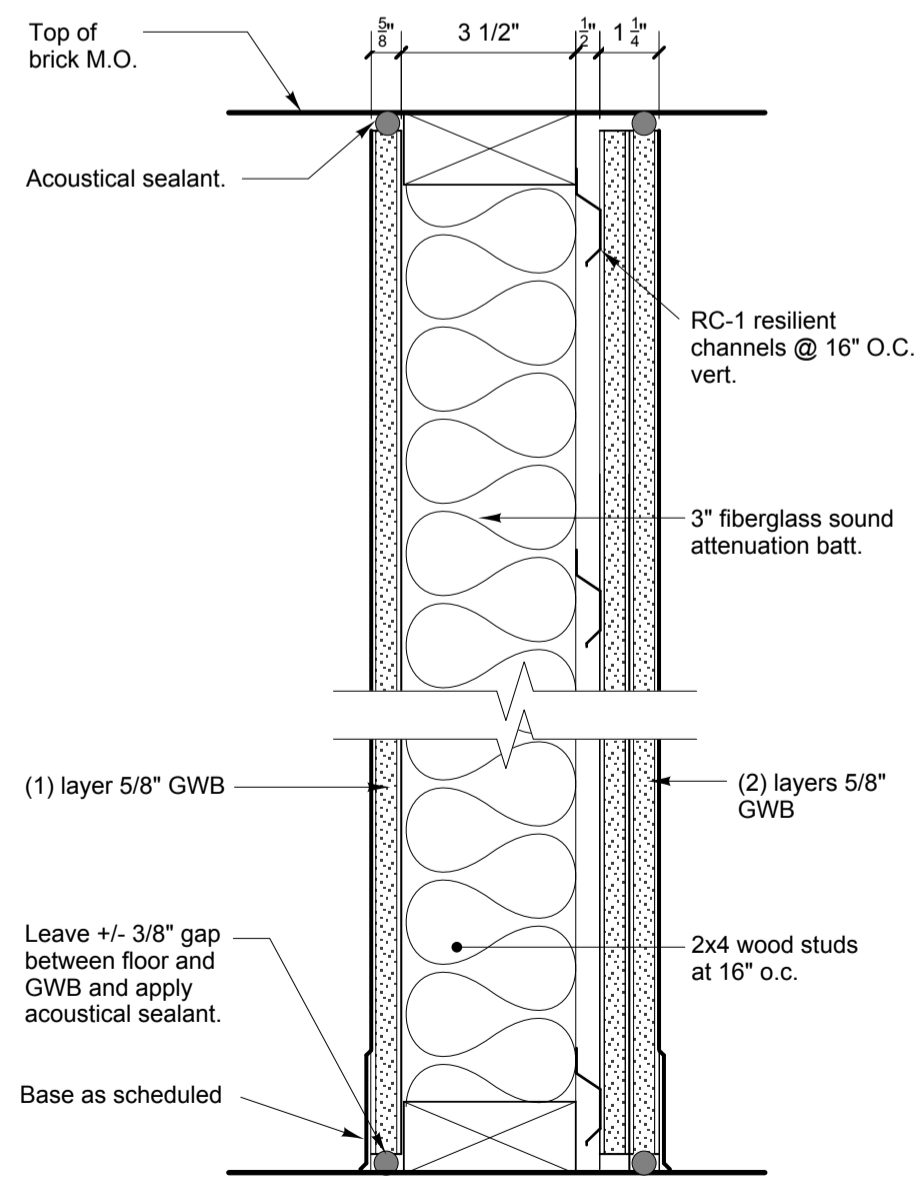
2 Typical Partition @ Toilet Rooms  
As Shown



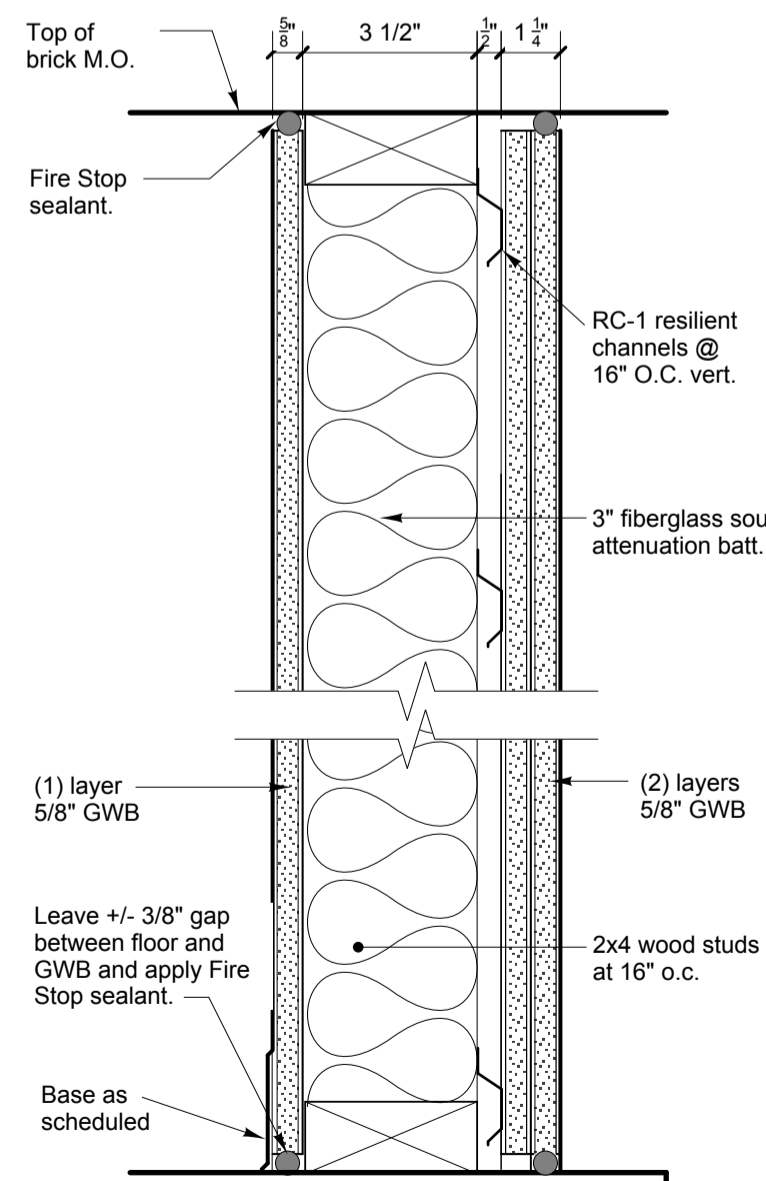
1 Typical Partition @ Toilet Rooms  
As Shown



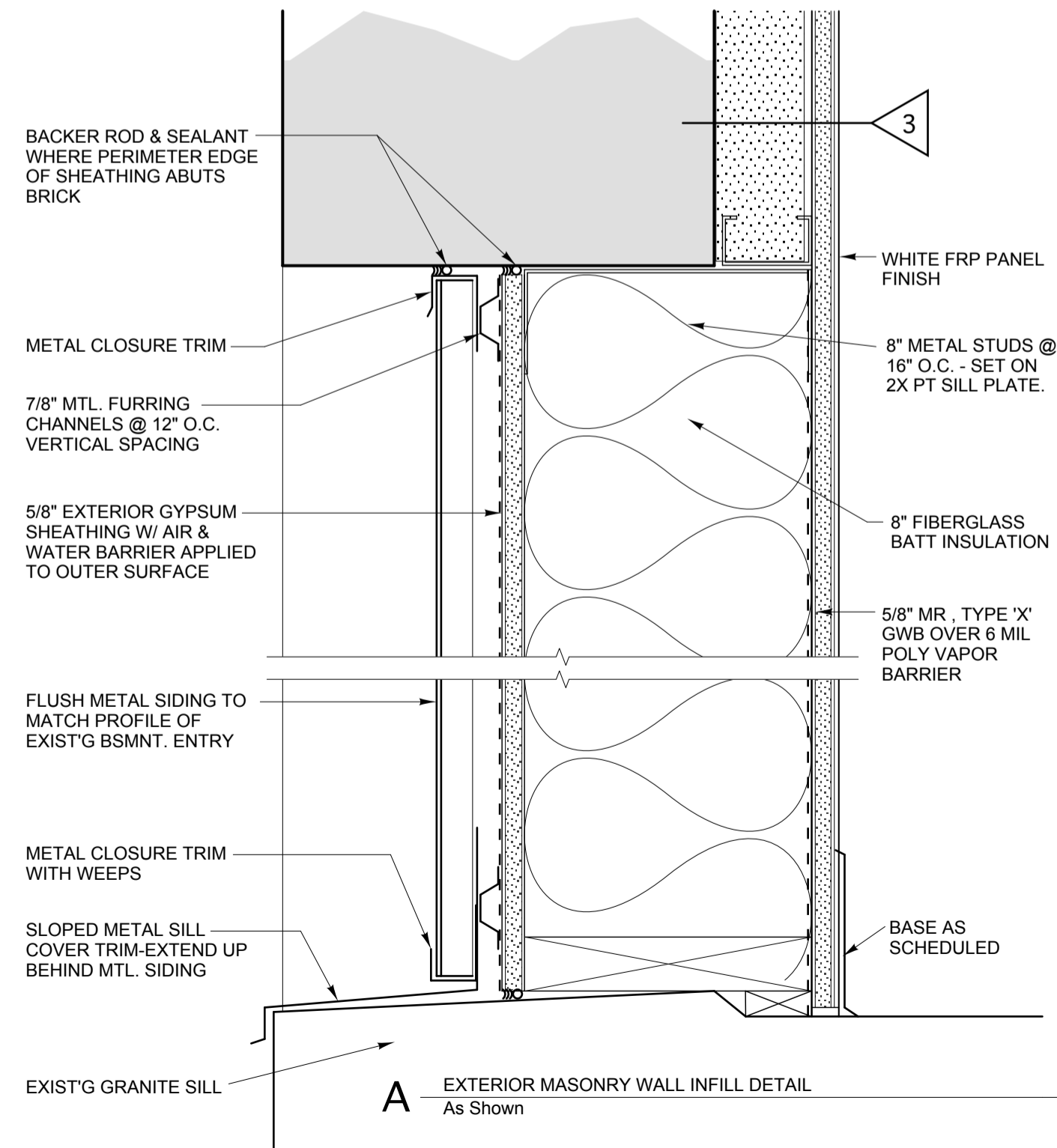
7 Shaft Wall Partition  
As Shown (Plan View)



6 Typical Demising Partition  
As Shown



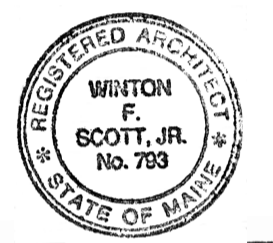
5 Typical Partition @ Brick M.O. Infill - 1 HOUR RATED  
As Shown



A EXTERIOR MASONRY WALL INFILL DETAIL  
As Shown



5 Milk Street  
Portland, Maine 04101  
207 774 4811  
www.wintonscott.com



*Winton Scott*

### KING'S HEAD Tenant Fit Up

Merrill's Wharf  
Portland, Maine

REVISIONS  
5/9/13  
6/8/13

PERMIT DOCUMENTS  
JUNE 8, 2013

Partition Types/ Details

Scale: 3"=1'-0"