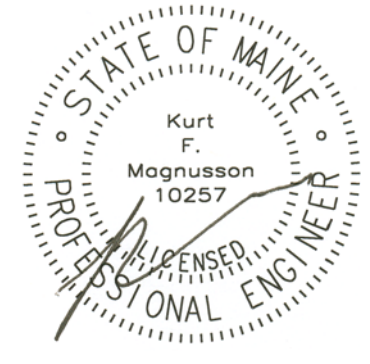




Winton Scott Architects
 5 Milk Street
 Portland, Maine 04101
 207 774 4811
 www.wintonsscott.com

Architecture / Planning
 Preservation Architecture
 Interior Architecture

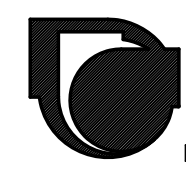
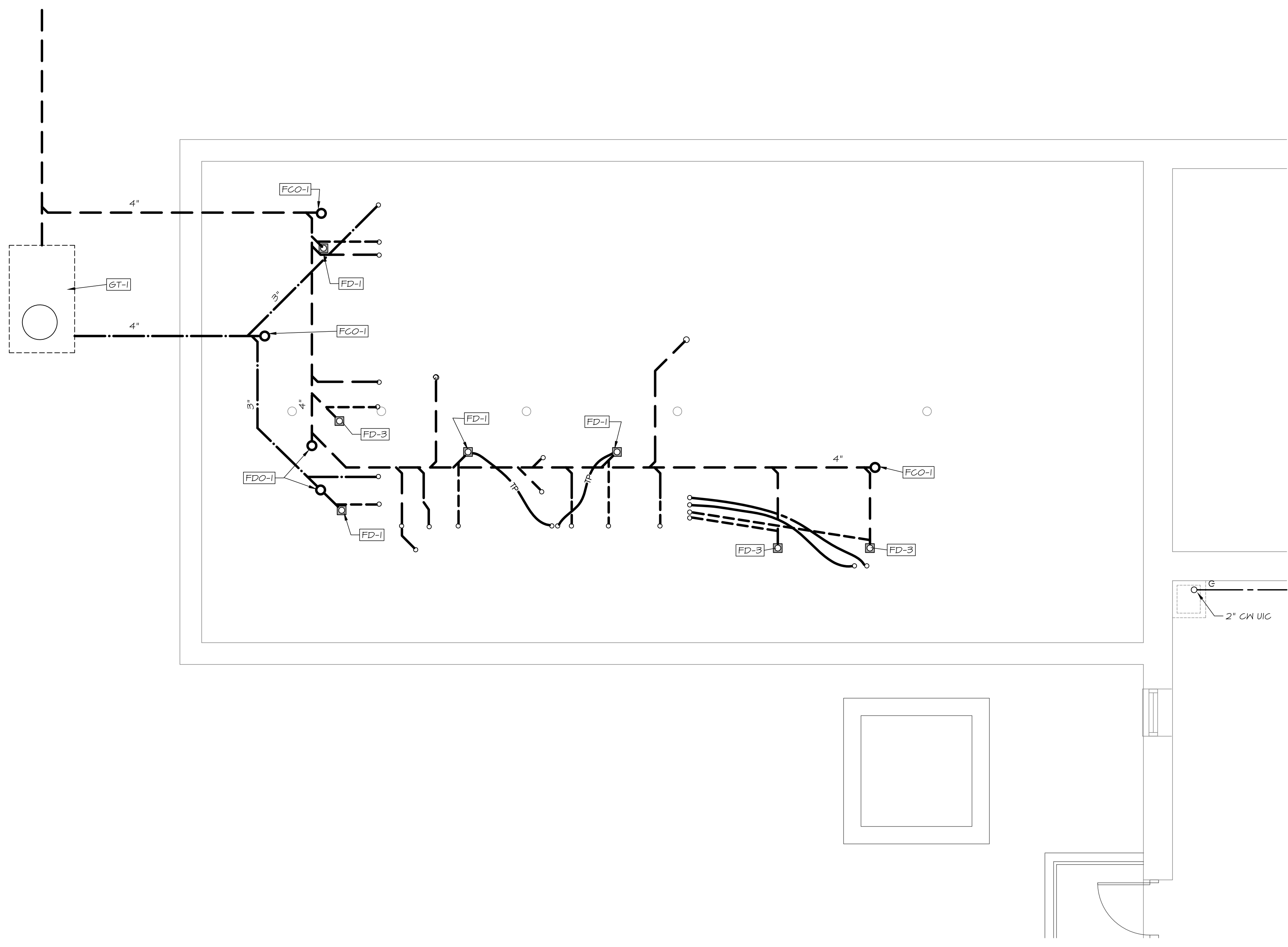


King's Head
 Pub

Merrill's Wharf
 Portland, Maine
 June 10, 2013

Plumbing
 Underslab &
 Basement
 Plan

Scale: 1/4" = 1'-0"



MECHANICAL SYSTEMS ENGINEERS
 ROYAL RIVER CENTER, UNIT #10
 10 FOREST FALLS DRIVE
 YARMOUTH, MAINE 04096
 FACEBOOK: MECHANICAL SYSTEMS ENGINEERS
 207-846-1441
 M.S.E. Proj. 1313
 © COPYRIGHT 2013

P1