

FIRE SPRINKLER PLAN - THIRD FLOOR PIPING
 SCALE: 1/8"=1'
 AREA PROTECTED: 20,000 SQ.FT.
 FINISH FLOOR ELEVATION: 41'-6"

- 155/59 ● DN DROP
1/2" K=5-6 CONCEALED PENDENT WITH WHITE COVER PLATE TYCO MODEL RFI1 SIN # TY3231
- 155/187 ● DN EXPOSED LINE
1/2" K=5-6 BRASS EXPOSED PENDENT TYCO MODEL T1-FR8 SIN # TY3263
- 175/76 ● DN SPRIG-UP
1/2" K=5-6 CC2 UPRIGHT SPK ON SPRIG-UP TO PROTECT CONCEALED SPACE ABOVE CEILINGS (TYPICAL)

NOTE:
 ALL ACT & GWB CEILING HEIGHTS AS NOTED
 FLEXIBLE DROPS TO BE USED AT ALL
 ACoustICAL TILE CEILING ONLY
 HARD PIPE DROPS TO BE USED AT ALL
 GYPSUM CEILING ONLY
 ALL PENDENT SPRINKLERS IN ACT TILE TO BE
 CENTERED IN 2'-0" TILE PANELS
 ALL AREAS LIGHT HAZARD OCCUPANCY

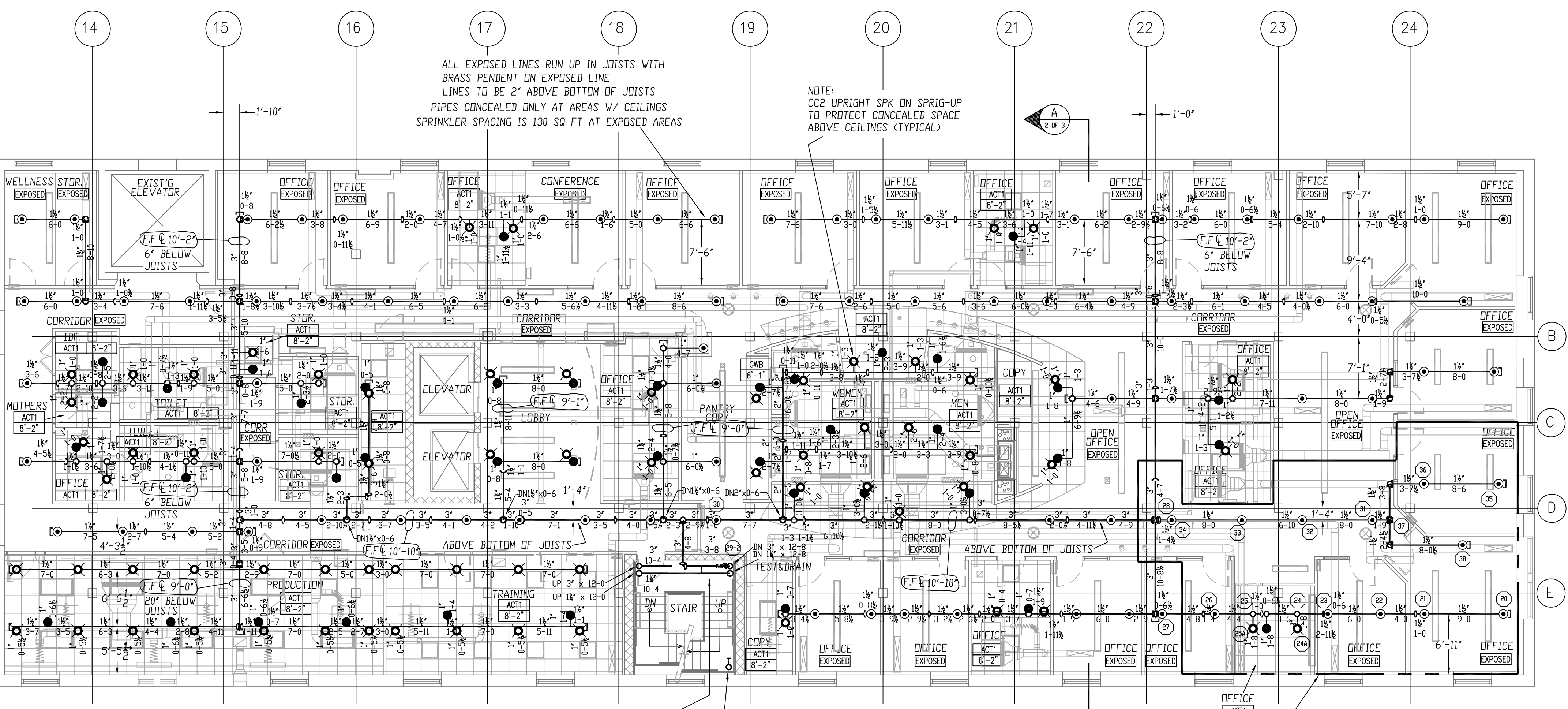
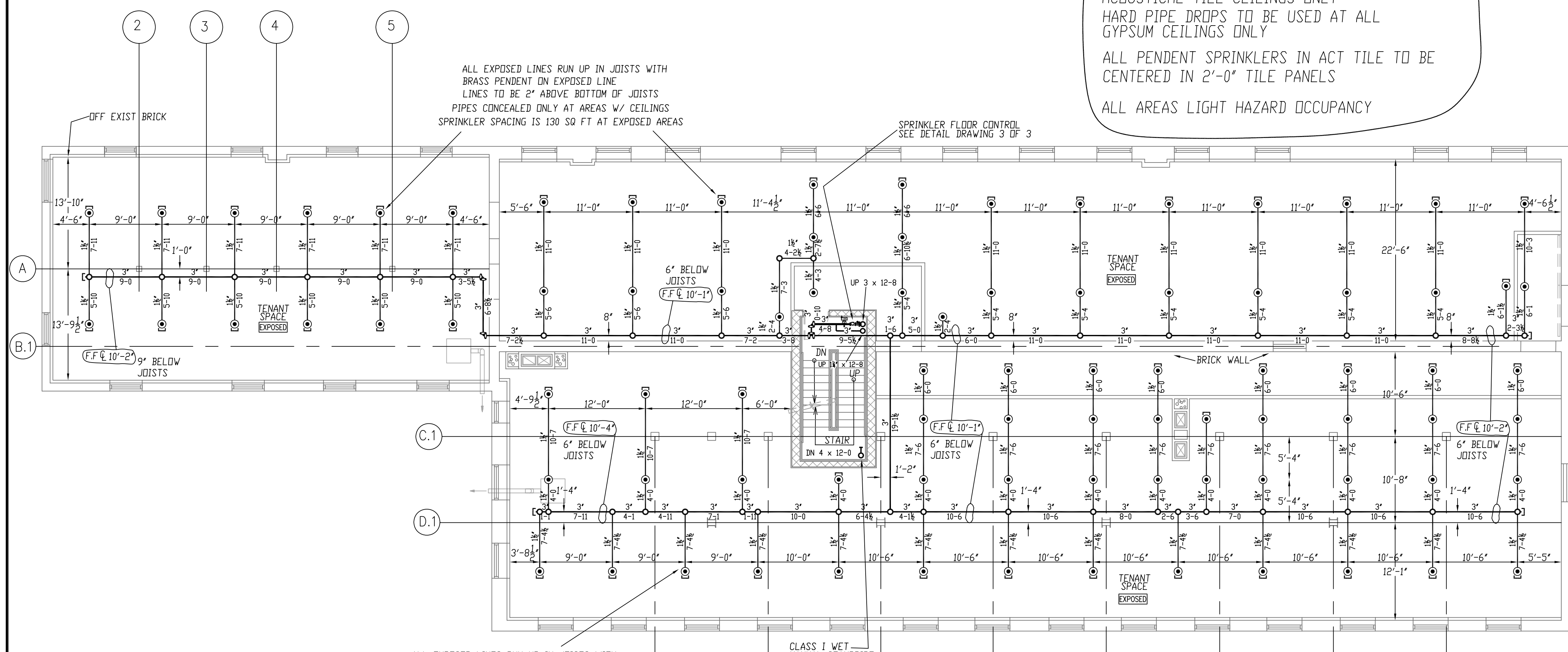
NOTE: ALL PIPE CUTS SHOWN ARE FROM
 CENTER TO CENTER OF FITTINGS

HYDRAULIC-SYSTEM
 THIS BUILDING IS PROTECTED BY A HYDRAULICALLY DESIGNED AUTOMATIC SPRINKLER SYSTEM.

LOCATION: 3RD FLR PEND

No. OF SPRINKLERS (CALCULATED)	14
BASIS OF DESIGN	.1
DESIGNED AREA OF RESPONSE (SQ.FT.)	917
SYSTEM DEMAND	253.6
WATER FLOW RATE (GPM)	89
RESIDUAL PRESSURE AT THE BASE OF THE RISER (PSI)	

HYDRAULIC DATA NAMEPLATE
 TO BE MOUNTED AT SYSTEM RISER
 ○ = INDICATES HYDRAULIC REFERENCE POINTS



FIRE SPRINKLER PLAN - SECOND FLOOR PIPING
 SCALE: 1/8"=1'
 AREA PROTECTED: 20,000 SQ.FT.
 FINISH FLOOR ELEVATION: 29'-3"

- 155/41 ● DN DROP
1/2" K=5-6 CONCEALED PENDENT WITH WHITE COVER PLATE TYCO MODEL RFI1 SIN # TY3231
- 155/177 ● DN EXPOSED LINE
1/2" K=5-6 BRASS EXPOSED PENDENT TYCO MODEL T1-FR8 SIN # TY3263
- 175/69 ● DN SPRIG-UP
1/2" K=5-6 CC2 UPRIGHT SPK ON SPRIG-UP TO PROTECT CONCEALED SPACE ABOVE CEILINGS (TYPICAL)

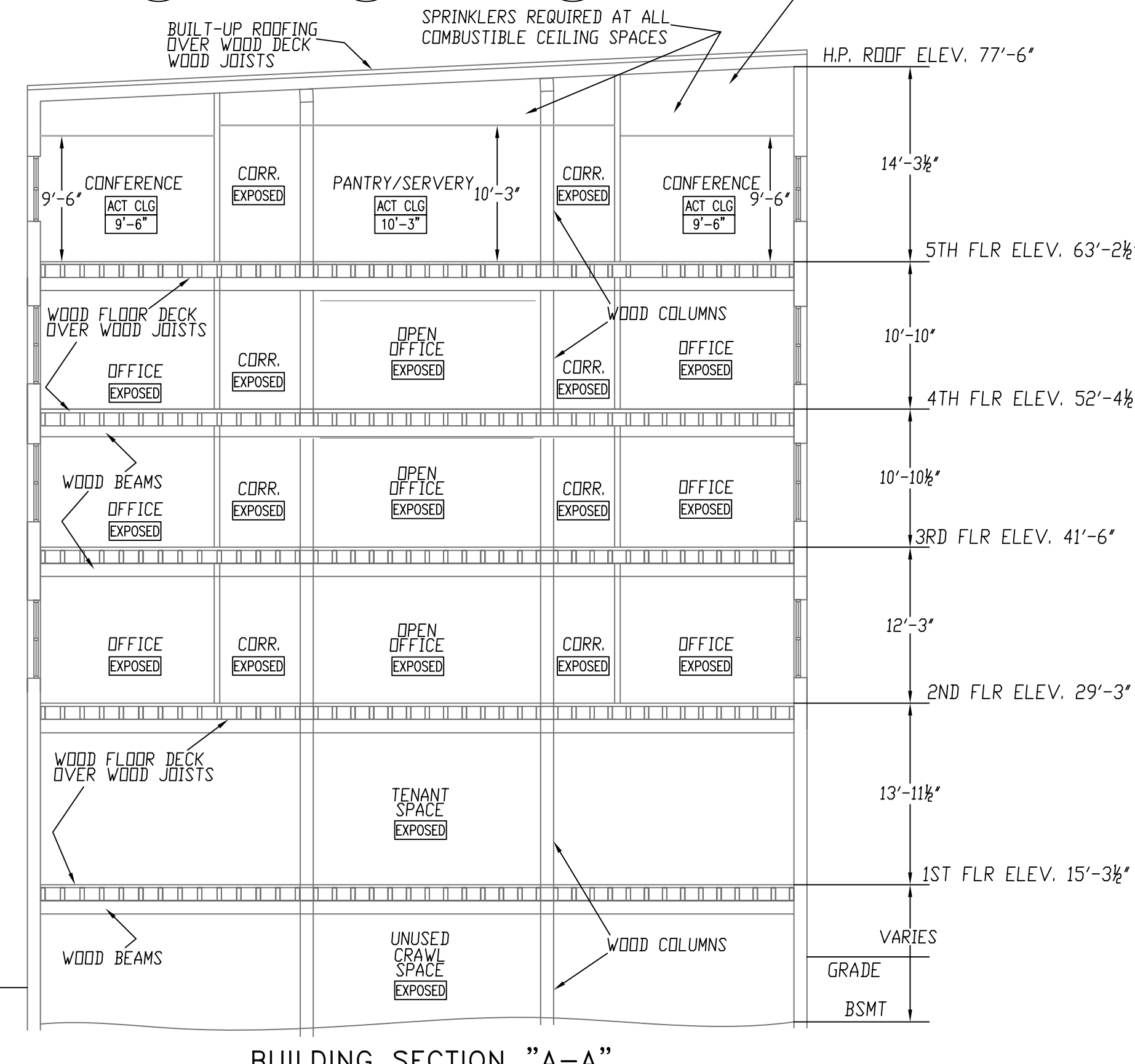
FLEXIBLE DROP TO BE USED AT ALL
 ACoustICAL TILE CEILING ONLY
 INSTALL HIGHER TEMPERATURE SPRINKLERS AS REQUIRED
 BY NFPA # 13 AROUND HEATING EQUIPMENT

HYDRAULIC-SYSTEM
 THIS BUILDING IS PROTECTED BY A HYDRAULICALLY DESIGNED AUTOMATIC SPRINKLER SYSTEM.

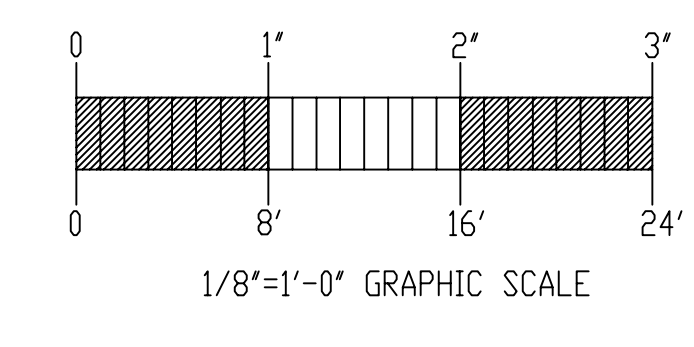
LOCATION: 2ND FLR PEND

No. OF SPRINKLERS (CALCULATED)	14
BASIS OF DESIGN	.1
DESIGNED AREA OF RESPONSE (SQ.FT.)	1009
SYSTEM DEMAND	248
WATER FLOW RATE (GPM)	77
RESIDUAL PRESSURE AT THE BASE OF THE RISER (PSI)	

HYDRAULIC DATA NAMEPLATE
 TO BE MOUNTED AT SYSTEM RISER
 ○ = INDICATES HYDRAULIC REFERENCE POINTS



BUILDING SECTION "A-A"
 NOT TO SCALE



GENERAL NOTES BRANCH LINE PIPING (1"-2") TO BE BLACK SCH 40 PIPE JOINED BY THREADED BULGED IRON FITTINGS MAIN PIPING (2"-4") TO BE SCHEDULE # 10 BLACK WITH GROoved ENDS & WELDED BUTTLETS JOINED BY MECHANICAL COUPLINGS SPRINKLER SYSTEM INSTALLATION TO COMPLY WITH NFPA HANDBOOK #13, 2006, AND SPECIFICATION SECTION 21 00 00 OWNER TO PROVIDE SUFFICIENT HEAT THROUGHOUT BUILDING TO PREVENT FREEZING OF WATER FILLED SPRINKLER PIPING AND EQUIPMENT. (MIN. 40°)	DATE	REVISIONS	REQUIRED APPROVALS OWNER / ARCHITECT STATE FIRE MARSHAL PORTLAND FIRE DEPARTMENT	MERRILL'S WHARF 258 COMMERCIAL ST. PORTLAND, MAINE	FIRE SPRINKLER PLANS & DETAILS DWG. NO. 2 OF 3 JOB NUMBER AU-4660-10 SCALE AS NOTED DATE 03/08/11
	DRAWN BY WAF NICET LEVEL III CERT # 895574	CHECKED BY RCB NICET LEVEL III CERT # 069681	CONTRACTOR LICENSE # 101 CONTRACTOR R# 368		CONTRACT WITH METRIC CORP. EASTERN FIRE PROTECTION AUBURN/LEWISTON INDUSTRIAL AIRPARK, AUBURN, MAINE 04210