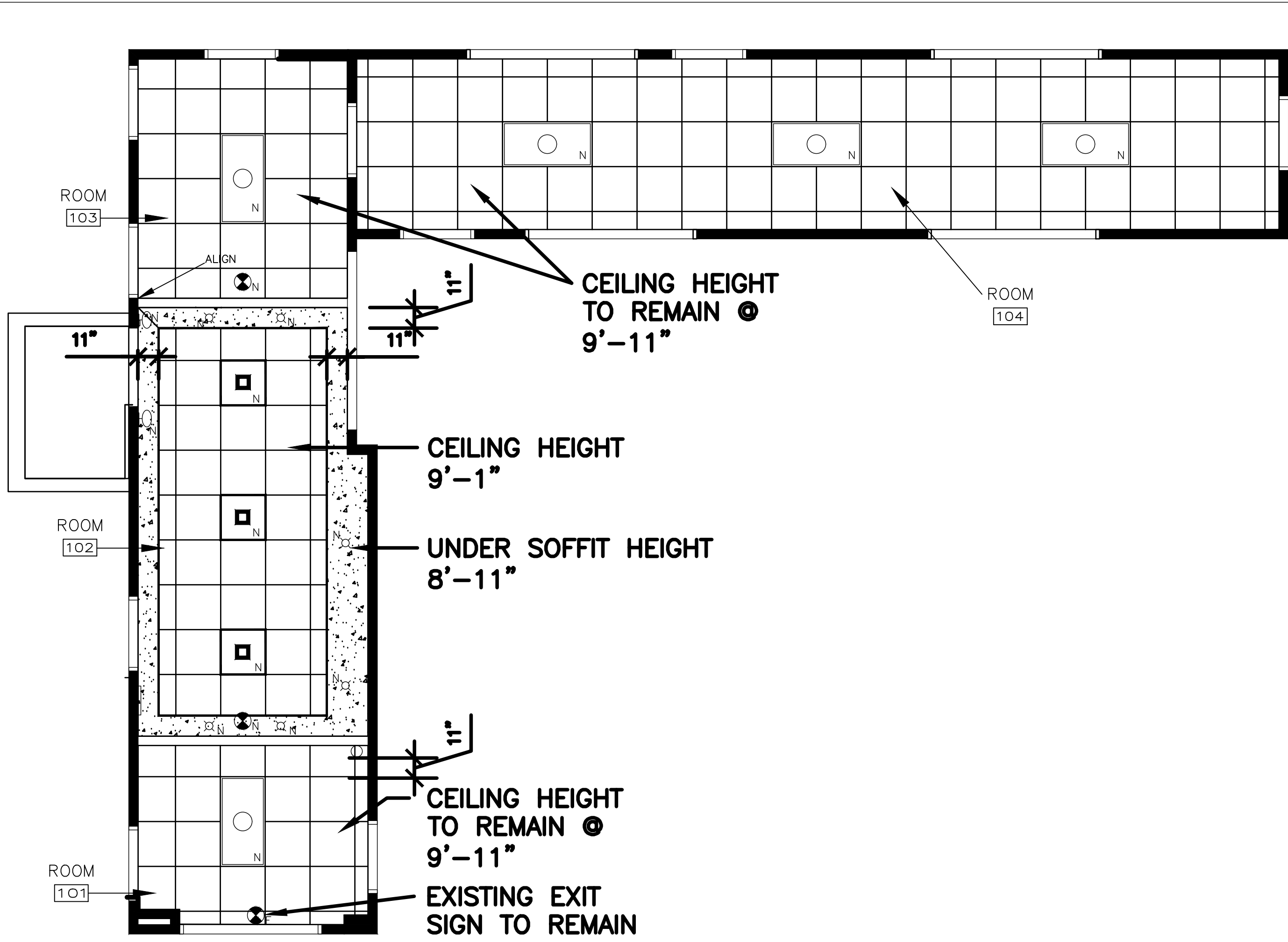



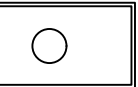

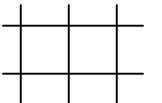


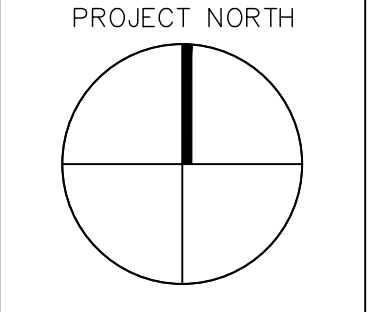
LICENSED CERTIFIED INTERIOR DESIGNER  
 JULIE A. TUPPER  
 CDD913



**REFLECTED CEILING LEGEND**

- A  PENDANT FIXTURE
- B  WALL SCONCE
- C  DOWNLIGHT
- D  2X4 RECESSED FIXTURE—BUILDING STANDARD
- E  CEILING MOUNTED EXIT SIGN
-  2x2 ACOUSTIC CEILING PANEL SYSTEM

NO.	DATE	REVISIONS



MARINE TRADE CENTER  
 2 PORTLAND FISH PIER  
 PORTLAND, ME

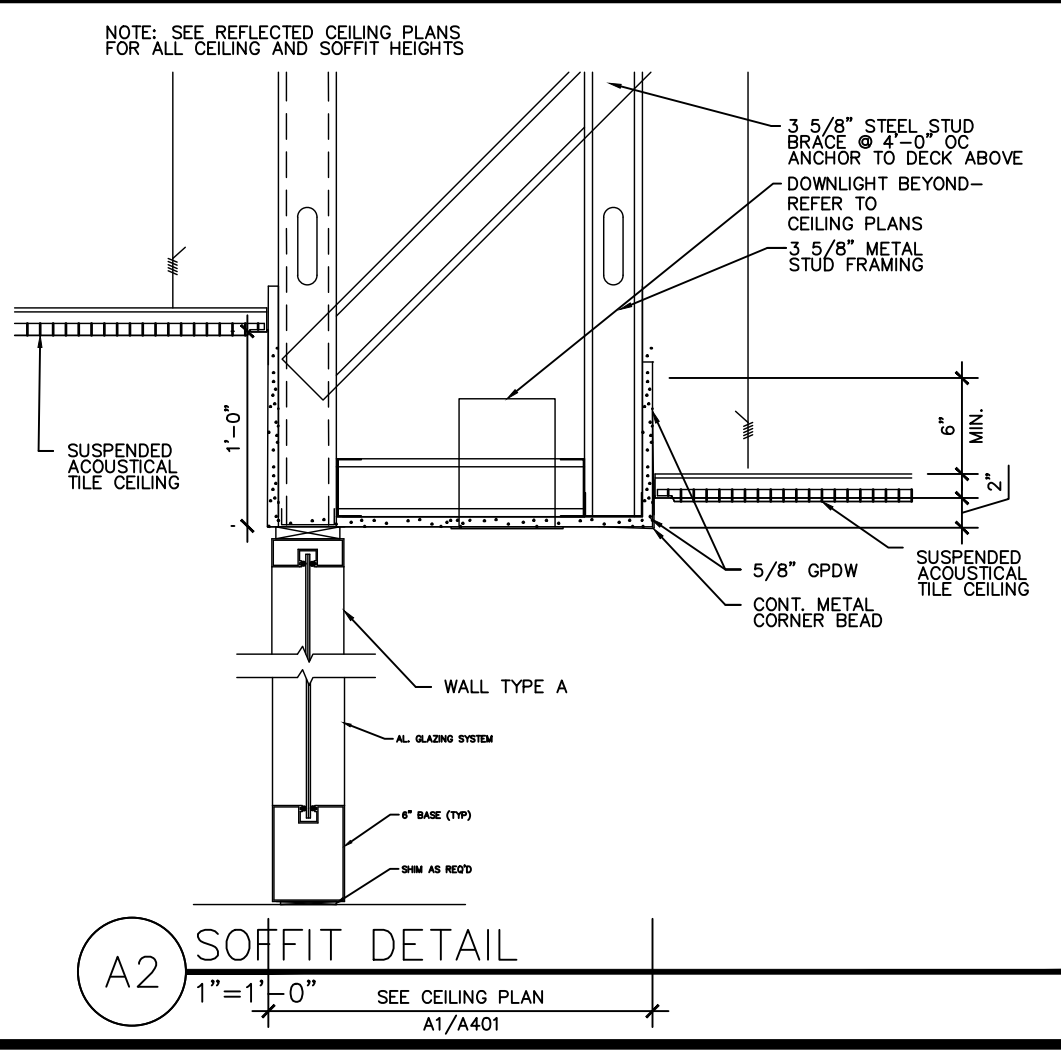
TITLE  
 1ST FLOOR — NEW  
 RCP  
 SCALE  
 1/4"=1'-0"

**rex fab**  
 165 SPURWINK RD.  
 SCARBOROUGH, ME  
 P: (207) 408-5950  
 DRAWN BY: JAT  
 CHECKED BY: —  
 DATE: 12/22/14

A401  
 14.201

B2 REFLECTED CEILING PLAN — 1ST  
 1/4" = 1'-0"

B1 REFLECTED CEILING PLAN — LEGEND  
 N.T.S.



**LIGHT FIXTURE SCHEDULE**

NO.	MATERIAL	MANUFACTURER	STYLE	REMARKS/LOCATION
A	PENDANT FIXTURE	HUBBARDTON FORGE	18.6"X18.6" VORTIS MEDIUM SEMI-FLUSH	IVORY ART GLASS — 07—DARK SMOKE FINISH
B	WALL SCONCE	HUBBARDTON FORGE	4.5"X18.3" AIRIS SMALL SCONCE	IVORY ART GLASS — 07—DARK SMOKE FINISH
C	DOWN LIGHTS	COOPER	PORTFOLIO COMPACT FLUORESCENT C6132/E/6111/HWF/TRM6P	
D	RECESSED FIXTURE	TBD	BUILDING OWNER TO SUPPLY SPEC	
E	EXIT LIGHT	TBD	MATCH BUILDING STANDARD	

A1 LIGHT FIXTURE SCHEDULE  
 N.T.S.

C:\Users\jate\Documents\Projects\Marine Trade Center\100 Set\A1.A401.rvt