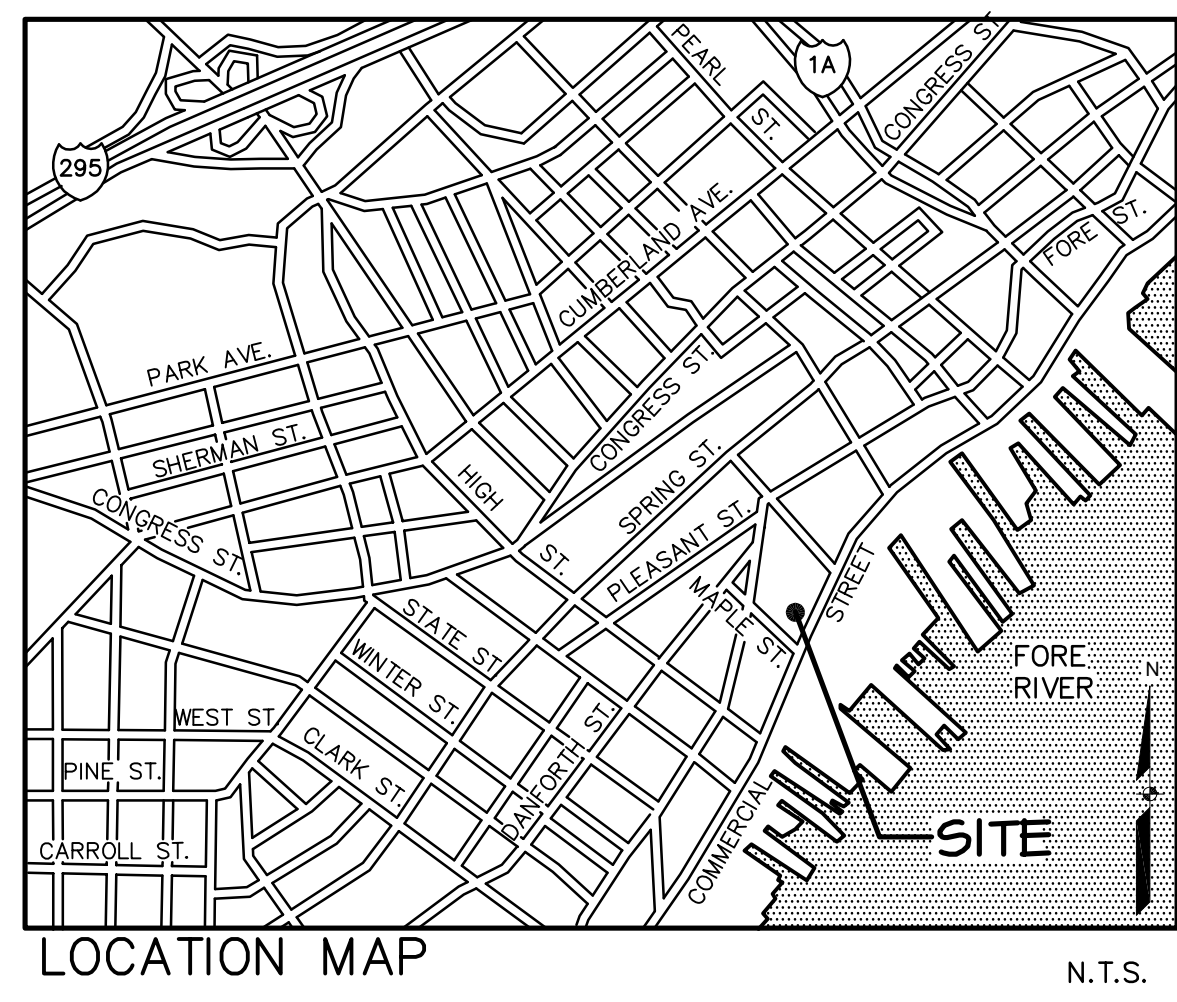
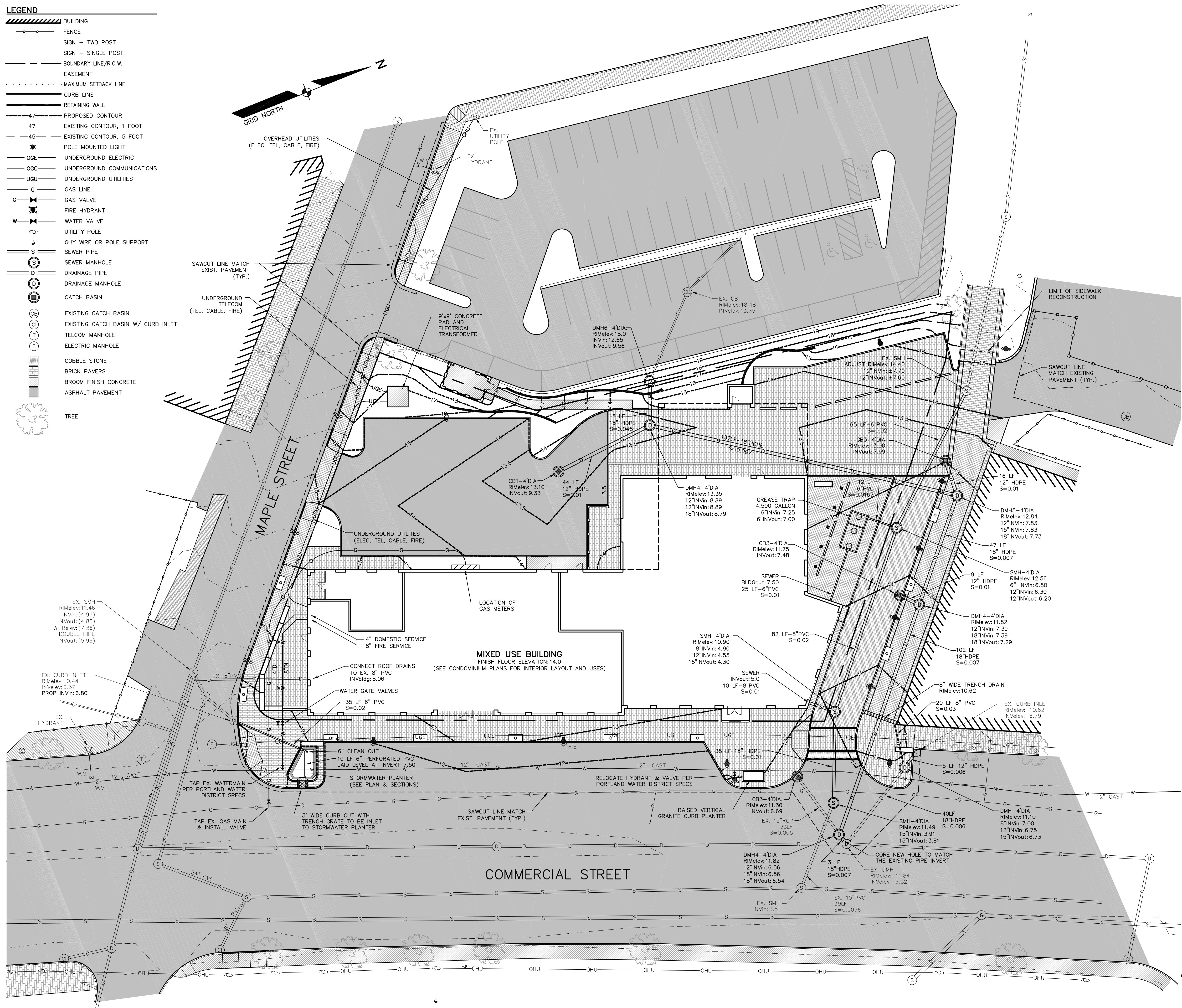
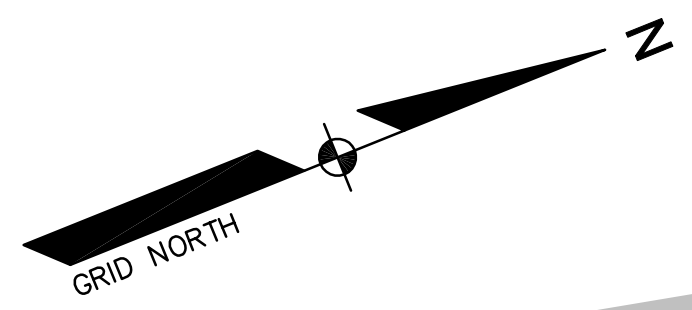


LEGEND

- BUILDING
- FENCE
- SIGN - TWO POST
- SIGN - SINGLE POST
- BOUNDARY LINE/R.O.W.
- EASEMENT
- MAXIMUM SETBACK LINE
- CURB LINE
- RETAINING WALL
- PROPOSED CONTOUR
- EXISTING CONTOUR, 1 FOOT
- EXISTING CONTOUR, 5 FOOT
- POLE MOUNTED LIGHT
- UNDERGROUND ELECTRIC
- UNDERGROUND COMMUNICATIONS
- UNDERGROUND UTILITIES
- GAS LINE
- GAS VALVE
- FIRE HYDRANT
- WATER VALVE
- UTILITY POLE
- GUY WIRE OR POLE SUPPORT
- SEWER PIPE
- SEWER MANHOLE
- DRAINAGE PIPE
- DRAINAGE MANHOLE
- CATCH BASIN
- EXISTING CATCH BASIN
- EXISTING CATCH BASIN W/ CURB INLET
- TELCOM MANHOLE
- ELECTRIC MANHOLE
- COBBLE STONE
- BRICK PAVERS
- BROOM FINISH CONCRETE
- ASPHALT PAVEMENT
- TREE



GENERAL NOTES:

1. ALL WORK WITHIN THE STREET RIGHT OF WAY WILL MEET THE STANDARDS IN THE CITY OF PORTLAND'S DESIGN AND TECHNICAL MANUALS.
2. GREASE TRAP CALCULATIONS:
 THE STATE OF MAINE SUBSURFACE WASTEWATER DISPOSAL RULES ARE UTILIZED TO CALCULATE THE AVERAGE DAILY PROCESS FLOW FROM THE FACILITY WITH NO SANITARY OR OTHER EXTRANEOUS WASTES FLOWING THROUGH THE TRAP.
PROCESS FLOW CALCULATION:
 EQUATION: $QB = Q \cdot (M/C) \cdot (ST/LF)$, WHERE
 Q IS THE LIQUID CAPACITY OF EXTERNAL GREASE INTERCEPTOR IN GALLONS
 M IS THE TOTAL NUMBER OF MEALS SERVED PER DAY
 GL IS THE GALLONS OF WASTEWATER PER MEAL, TYP. 2.0 GALLONS
 ST IS THE STORAGE CAPACITY, TYP. 2
 LF IS A LOADING FACTOR DEPENDING ON TYPE OF FACILITIES PRESENT
 LF IS 1.0 WITH DISH WASHING
 LF IS 0.5 WITHOUT DISH WASHING
 MEALS PER DAY: 50 SEATS AT 2 MEALS PER DAY = 100 MEALS
 HOTEL: 78 SEATS AT 2 MEALS PER DAY = 156 MEALS
 RESTAURANT LOUNGE: 158 SEATS AT 3 MEALS PER DAY = 474 MEALS
 RESTAURANT DINING: TOTAL MEALS PER DAY = 730 MEALS
 PROCESS FLOW $Q = (730)(2.0)(2)(1.0) = 2,920$ GALLONS
GREASE TRAP SIZING:
 CHAMBER "A" (3/4 OF TANK VOLUME) MUST BE EQUIVALENT TO THE AVERAGE DAILY PROCESS FLOW
 TANK VOLUME = 4,500 GALLONS
 CHAMBER A = 2,980 GALLONS
 CHAMBER B = 1,470 GALLONS

DATE	REVISION DESCRIPTION
01-02-13	REVISED PER CITY STAFF AND HISTORICAL/PLANNING BOARD COMMENTS
01-15-13	REVISED PER CITY STAFF AND HISTORICAL/PLANNING BOARD COMMENTS

COPECHEE
 CONSTRUCTION CORPORATION
 11 CORPORATE DRIVE, BELMONT, NH 03220
 PHONE (603) 327-9990 FAX (603) 327-9191

UTILITY PLAN

PROJECT: COMMERCIAL & MAPLE STREET MIXED USE DEVELOPMENT
 PORTLAND, ME

DATE: 10-22-12
 SCALE: 1"=20'
 DRAWN BY: BJS
C05
 SHEET: 5 OF 14

