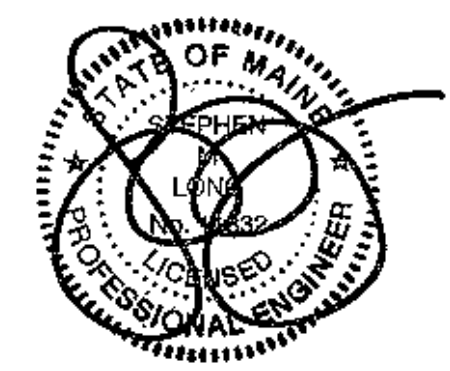
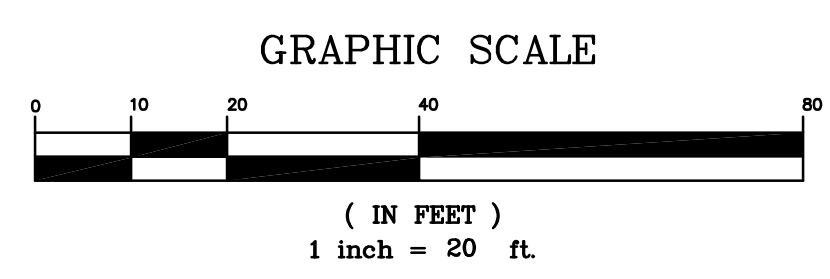
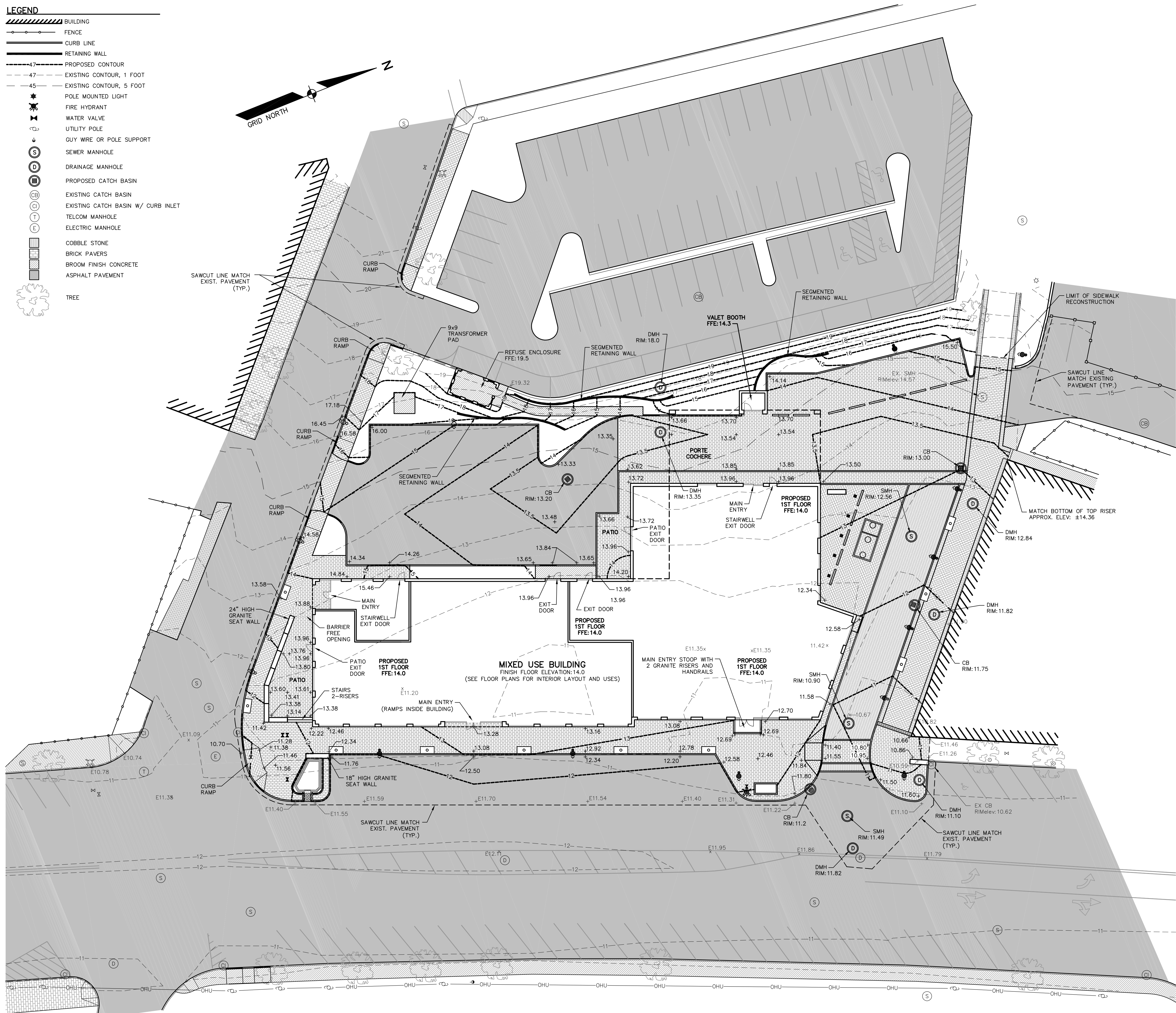
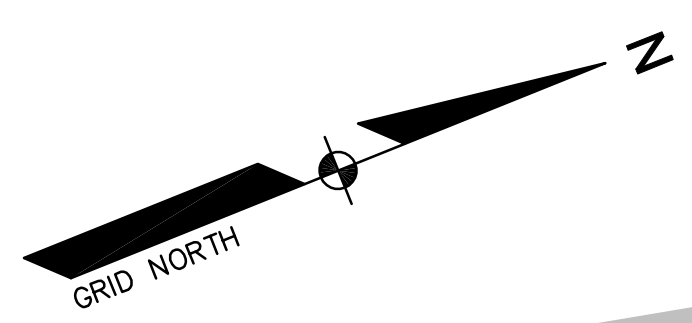


- LEGEND**
- BUILDING
 - FENCE
 - CURB LINE
 - RETAINING WALL
 - PROPOSED CONTOUR
 - EXISTING CONTOUR, 1 FOOT
 - EXISTING CONTOUR, 5 FOOT
 - POLE MOUNTED LIGHT
 - FIRE HYDRANT
 - WATER VALVE
 - UTILITY POLE
 - GUY WIRE OR POLE SUPPORT
 - SEWER MANHOLE
 - DRAINAGE MANHOLE
 - PROPOSED CATCH BASIN
 - EXISTING CATCH BASIN
 - EXISTING CATCH BASIN W/ CURB INLET
 - TELCOM MANHOLE
 - ELECTRIC MANHOLE
 - COBBLE STONE
 - BRICK PAVERS
 - BROOM FINISH CONCRETE
 - ASPHALT PAVEMENT
 - TREE



DATE	REVISION SCHEDULE	REVISION DESCRIPTION
01-02-13	REVISED PER CITY STAFF AND HISTORICAL/PLANNING BOARD COMMENTS	BJS
01-15-13	REVISED PER CITY STAFF AND HISTORICAL/PLANNING BOARD COMMENTS	BJS

LOPECHED
 CONSTRUCTION CORPORATION
 11 CORPORATE DRIVE, BELMONT NH 03220
 PHONE (603) 327-3090 FAX (603) 327-3191

GRADING PLAN

PROJECT: **COMMERCIAL & MAPLE STREET MIXED USE DEVELOPMENT**
 PORTLAND, ME

DATE: 10-22-12
 SCALE: 1"=20'
 DRAWN BY: BJS
C06
 SHEET: 6 OF 14