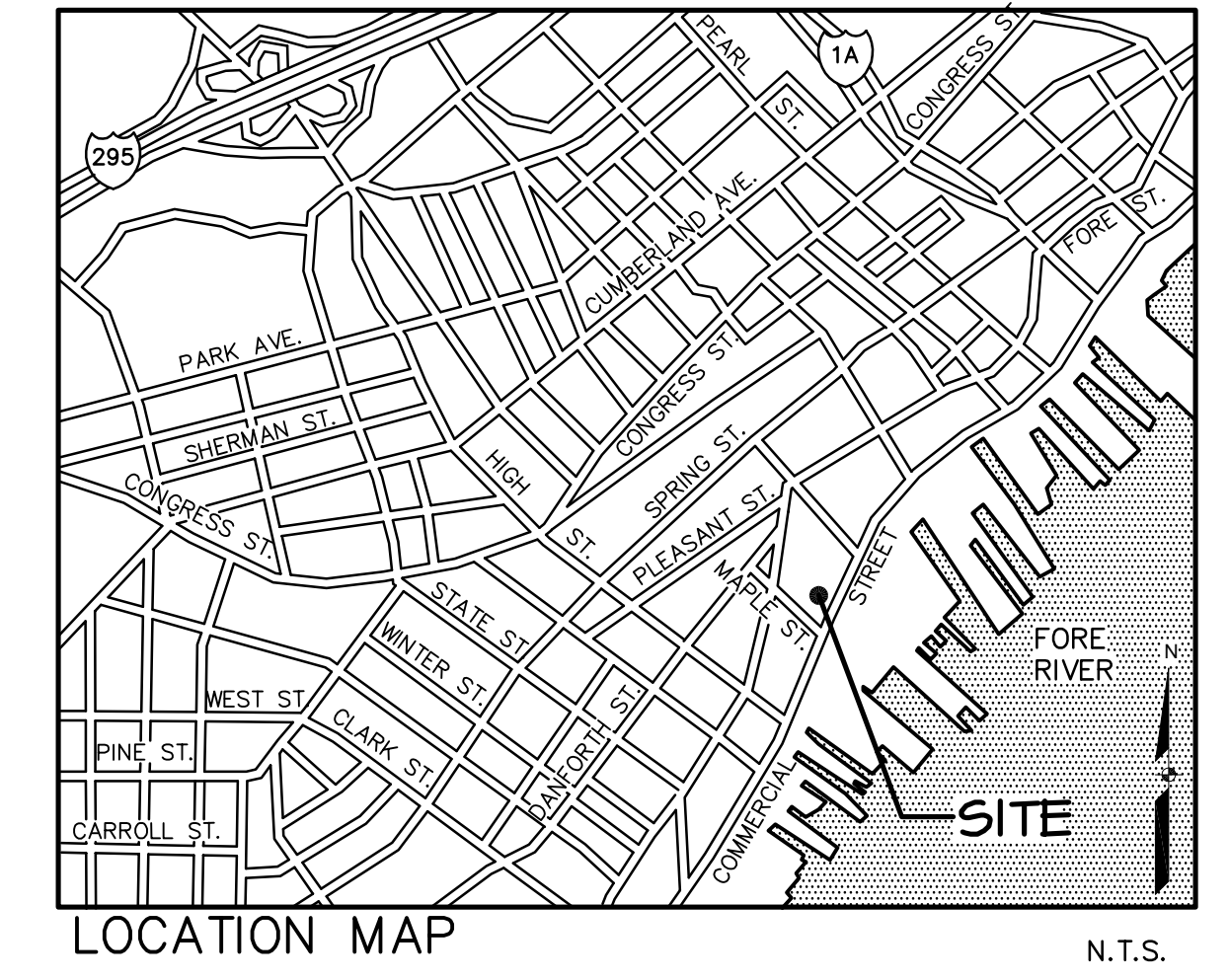
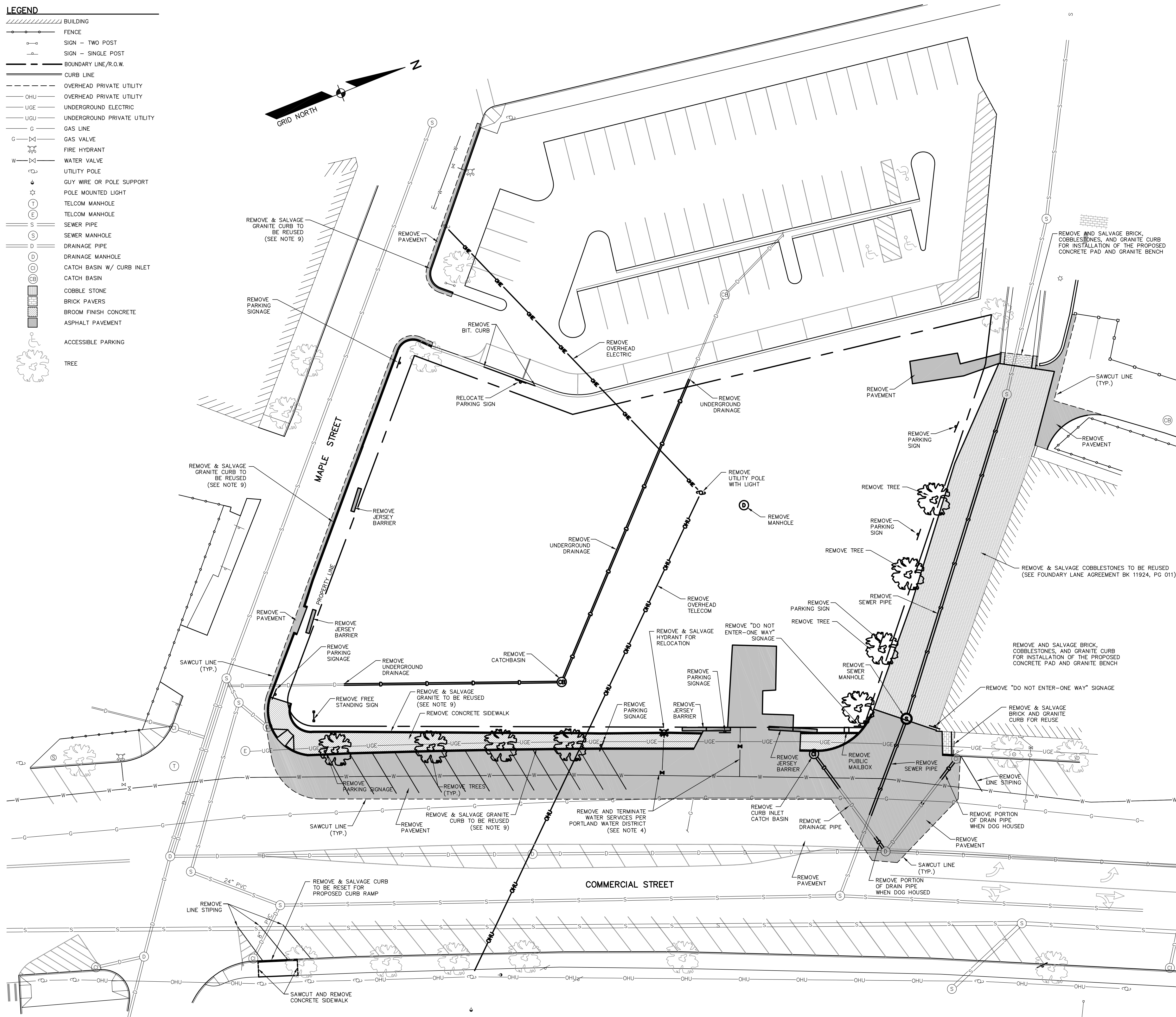
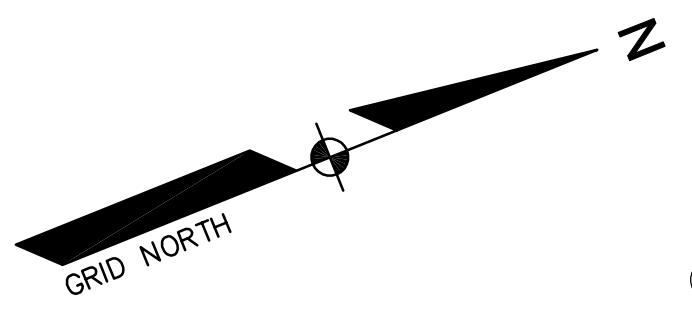
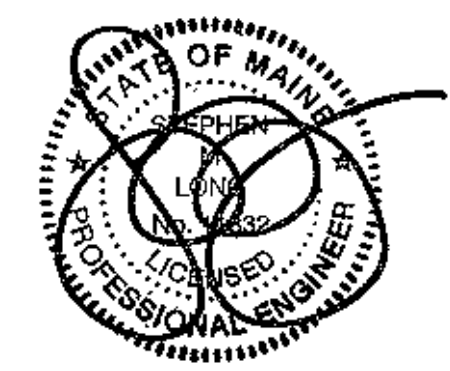
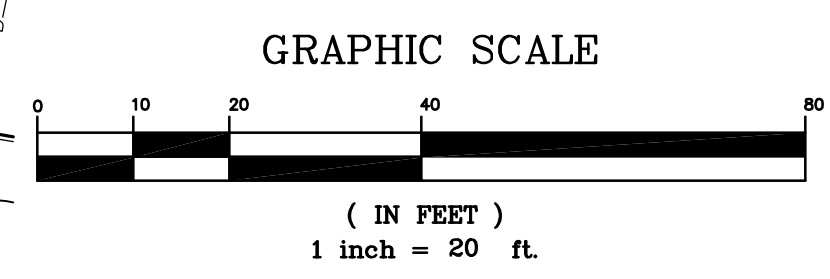


LEGEND

	BUILDING
	FENCE
	SIGN - TWO POST
	SIGN - SINGLE POST
	BOUNDARY LINE/R.O.W.
	CURB LINE
	OVERHEAD PRIVATE UTILITY
	OVERHEAD PRIVATE UTILITY
	UNDERGROUND ELECTRIC
	UNDERGROUND PRIVATE UTILITY
	GAS LINE
	GAS VALVE
	FIRE HYDRANT
	WATER VALVE
	UTILITY POLE
	GUY WIRE OR POLE SUPPORT
	POLE MOUNTED LIGHT
	TELCOM MANHOLE
	TELCOM MANHOLE
	SEWER PIPE
	SEWER MANHOLE
	DRAINAGE PIPE
	DRAINAGE MANHOLE
	CATCH BASIN W/ CURB INLET
	CATCH BASIN
	COBBLE STONE
	BRICK PAVERS
	BROOM FINISH CONCRETE
	ASPHALT PAVEMENT
	ACCESSIBLE PARKING
	TREE



- GENERAL NOTES**
- THE SITE SUBCONTRACTOR SHALL BE RESPONSIBLE FOR FIELD VERIFYING THE LOCATION, DEPTH AND MATERIAL OF ALL SUBSURFACE UTILITY LINES SHOWN HEREON AND ANY AND ALL OTHERS LOCATED ON SITE WITHIN THE CONSTRUCTION AREA.
 - THE SITE SUBCONTRACTOR IS RESPONSIBLE FOR OBTAINING ALL REQUIRED PERMITS, LICENSES, INSPECTIONS AND CERTIFICATES.
 - ALL DEMOLITION MATERIALS SHALL BE DISPOSED OF BY APPROVED LEGAL MEANS.
 - EXISTING UTILITIES SHALL BE REMOVED WITHIN THE LIMITS OF WORK REQUIRED FOR NEW CONSTRUCTION. TERMINATED UTILITIES LOCATED OUTSIDE THE LIMITS OF CONSTRUCTION SHALL BE DISCONNECTED, SEALED, REMOVED OR ABANDONED IN PLACE AS INDICATED ON THE PLANS AND IN ACCORDANCE WITH THE APPLICABLE STANDARDS, NOTIFICATION REQUIREMENTS AND DOCUMENTATION REQUIREMENTS OF THE AUTHORITY WITH OWNERSHIP OF AND/OR JURISDICTION OVER THOSE UTILITIES.
 - THE SITE SUBCONTRACTOR IS RESPONSIBLE FOR COORDINATING ALL SITE AND UTILITY DEMOLITION WITH ANY PROJECT PHASING AND LOGISTIC PLANS.
 - OVERHEAD ELECTRIC AND TELECOMMUNICATIONS CABLES AND UTILITY POLES AND APPURTENANCES ARE TO BE REMOVED/RELOCATED BY THE UTILITY COMPANIES OWNING SUCH FACILITIES. THE GENERAL CONTRACTOR IS TO COORDINATE SCHEDULE WITH UTILITY COMPANY AND OWNER.
 - REFER TO THE SITE PLAN, AND THE GRADING AND UTILITY PLAN FOR LIMITS OF NEW CONSTRUCTION WORK.
 - REMOVAL AND ABANDONMENT OF SANITARY SEWERS AND STORM DRAINS:
 - PRIOR TO REMOVING OR ABANDONING ANY STORMWATER OF SANITARY SEWER LATERAL OR MAIN, THE CONTRACTOR SHALL OBTAIN A SEAL DRAIN PERMIT FROM THE CITY OF PORTLAND PUBLIC SERVICES DEPARTMENT. THE CONTRACTOR SHALL PROVIDE 48 HOURS NOTICE TO THE SEWER MAINTENANCE DIVISION STATING THE DATE AND TIME THE CONTRACTOR INTENDS TO COMPLETE THE WORK.
 - ALL SANITARY AND STORM DRAIN MANHOLES INDICATED TO BE REMOVED SHALL BE REMOVED IN THEIR ENTIRETY.
 - STORM DRAINS AND SANITARY SEWER INDICATED TO BE REMOVED SHALL BE REMOVED IN THEIR ENTIRETY. THE EXISTING SEWER/RAIN LATERALS TO BE REMOVED SHALL BE PLUGGED AT THE MAIN OR AT THE CONNECTING STRUCTURE TO REMAIN IN ACCORDANCE WITH CITY OF PORTLAND PUBLIC SERVICES STANDARDS.
 - GRANITE CURBING REMOVED FROM THE PUBLIC RIGHT OF WAY SHALL BE SALVAGED CLEANED AND STACKED ON SITE, AS DIRECTED BY THE GENERAL CONTRACTOR, FOR RE-INSTALLATION.
 - ANY GRANITE CURBING REMOVED FROM THE PUBLIC RIGHT OF WAY THAT IS SALVAGED AND NOT REINSTALLED SHALL REMAIN THE PROPERTY OF THE CITY OF PORTLAND. THE SITE SUBCONTRACTOR SHALL BE RESPONSIBLE FOR THE REMOVAL WITHOUT DAMAGE, CLEANING AND STACKING IN A CITY DESIGNATED LOCATION. ALL STRAIGHT, CURVED, TERMINAL, AND CORNER SECTIONS OF CURBING SHALL BE SALVAGED. EACH SECTION OF STRAIGHT CURBING SHALL HAVE ITS OVERALL LENGTH PAINTED LEGIBLY ON ONE END. EACH SECTION OF CURVED CURBING SHALL HAVE ITS OVERALL ARC LENGTH AND RADIUS PAINTED LEGIBLY ON ONE END.



DATE	REVISION DESCRIPTION	BY
01-02-13	REVISED PER CITY STAFF AND HISTORICAL/PLANNING BOARD COMMENTS	BJB
01-15-13	REVISED PER CITY STAFF AND HISTORICAL/PLANNING BOARD COMMENTS	BJB

COPECHEE
CONSTRUCTION CORPORATION
11 CORPORATE DRIVE, BELMONT, NH 03220
PHONE (603) 327-9090 FAX (603) 327-9191

DEMOLITION PLAN

PROJECT: **COMMERCIAL & MAPLE STREET MIXED USE DEVELOPMENT**
PORTLAND, ME

DATE: 10-22-12
SCALE: 1"=20'
DRAWN BY: BJB
C03
SHEET: 3 OF 14