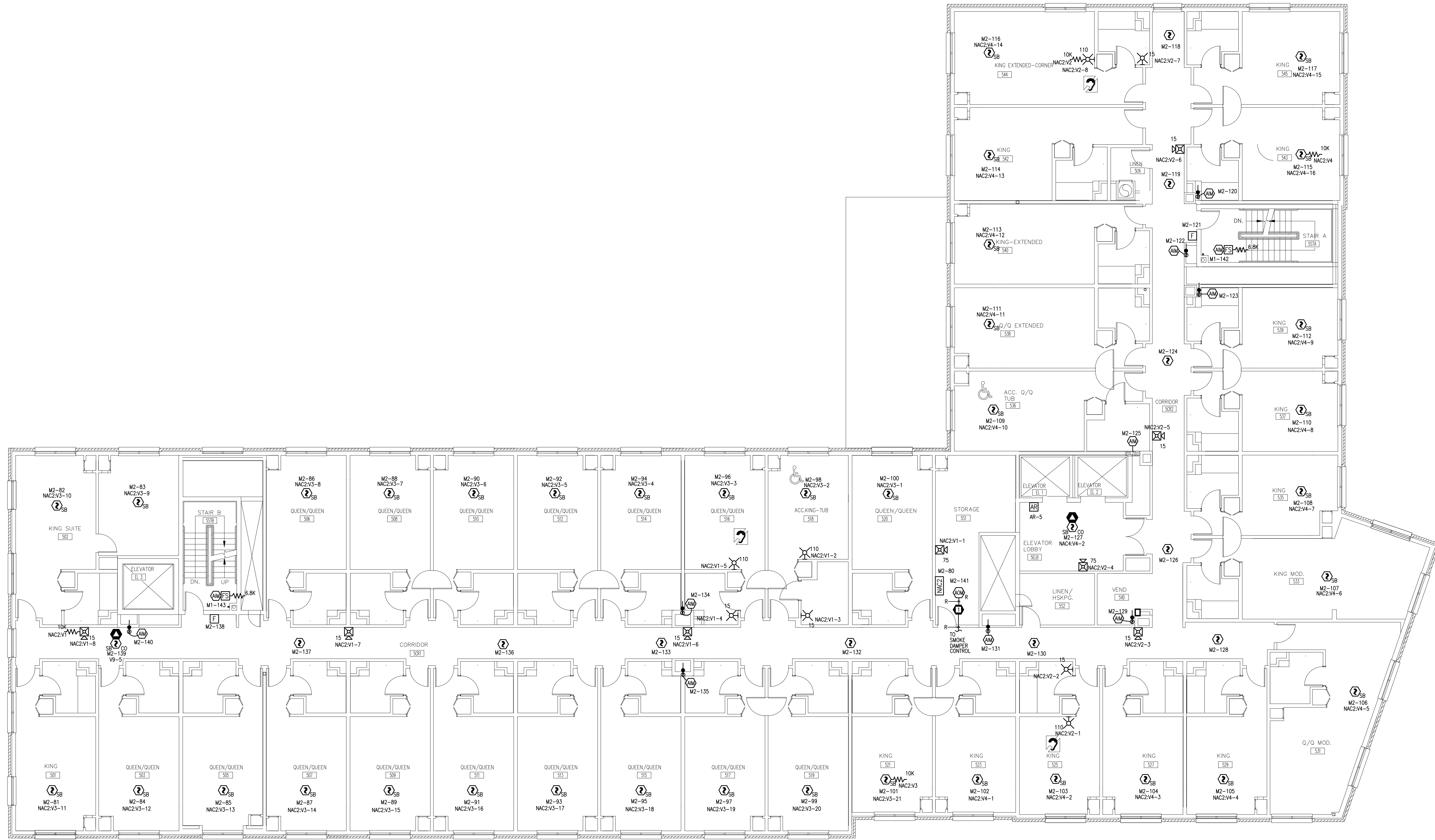


NOTE: HEARING IMPAIRED/ACCESSIBLE GUEST ROOM STROBE WALL MOUNTING HEIGHTS SHALL BE IN ACCORDANCE WITH NFPA 72, 2010 TABLE 18.5.4.6.2.



**tyco**  
SimplexGrinnell

20 THOMAS DRIVE  
WESTBROOK, ME 04092  
207-842-6440  
SALES  
207-842-6440  
FAX  
207-842-6439  
© 2013 SIMPLEX GRINNELL, LP  
ALL RIGHTS RESERVED

CHG BY	SK
REVISION DESCRIPTION	
DATE	11/08/13
NO.	1
PER SUBMITTAL REVIEW DATED	10/31/13

NO.	1
DATE	11/08/13

FIRE ALARM & AREA OF RESCUE SYSTEMS  
FIFTH FLOOR PLAN  
MARRIOTT COURTYARD  
PORTLAND MAINE

DRAWN BY:	STEPHENS	DATE:	8/27/13
CHECKED BY:	KALAFARSKI	DATE:	9/4/13
PROJECT NUMBER:	972833401		
SHEET TITLE:	FIRE ALARM SYSTEM FIFTH FLOOR PLAN		
SHEET NUMBER:	FA-105		