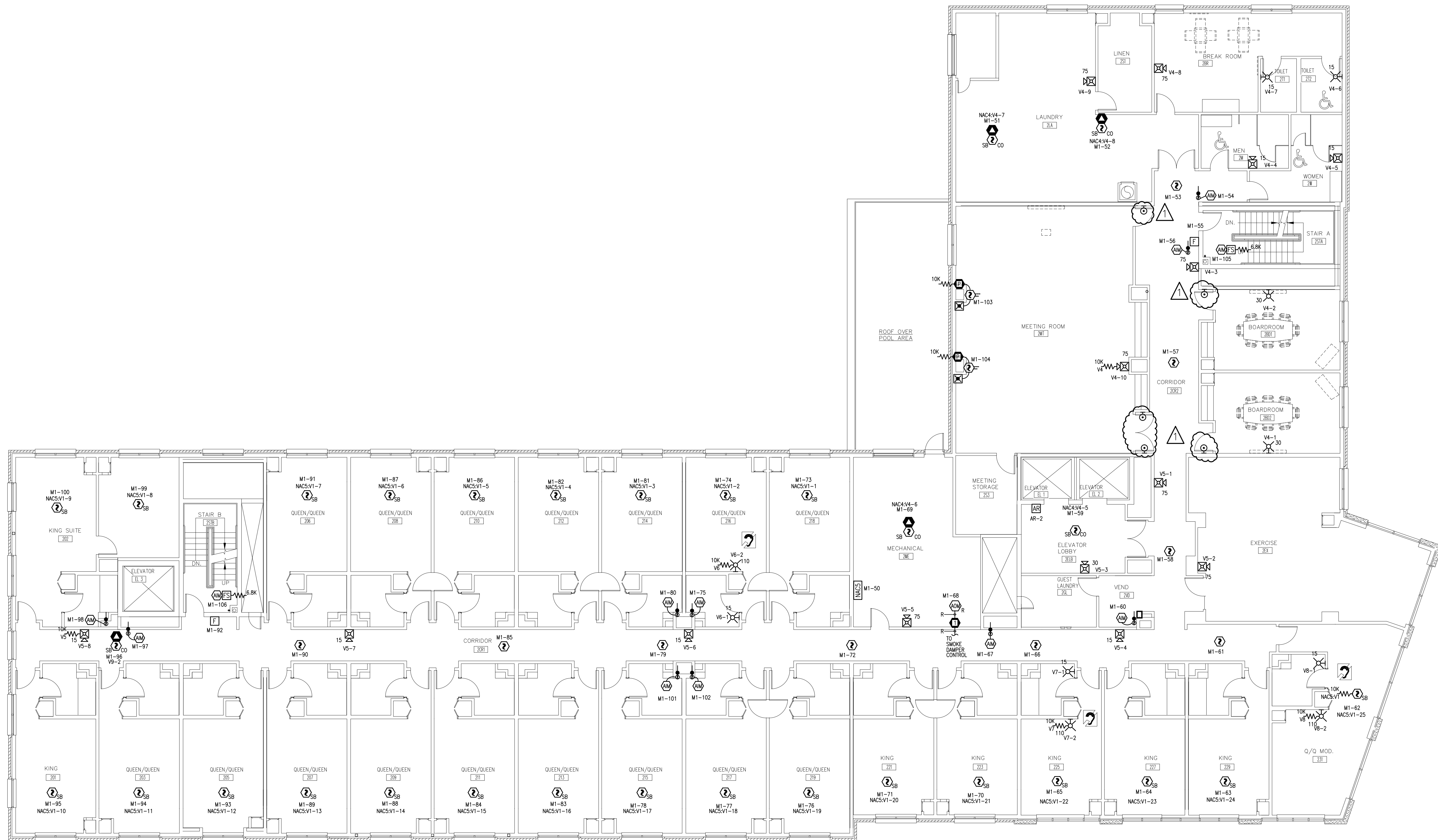


1

NOTE: HEARING IMPAIRED/ACCESSIBLE GUEST ROOM STROBE WALL MOUNTING HEIGHTS SHALL BE IN ACCORDANCE WITH NFPA 72, 2010 TABLE 18.5.4.6.2.



20 THOMAS DRIVE WESTBROOK, ME 04092 207-842-6440 SALES 207-842-6440 SERVICE 207-842-6439 FAX © 2013 SIMPLEX GRINNELL, LP ALL RIGHTS RESERVED	
CHG BY: SK	REVISION DESCRIPTION:
DATE: 11/08/13	PER SUBMITTAL REVIEW DATED 10/31/13
NO. 1	DATE:
FIRE ALARM & AREA OF RESCUE SYSTEMS SECOND FLOOR PLAN MARRIOTT COURTYARD PORTLAND MAINE	
DRAWN BY: STEPHENS	DATE: 8/27/13
CHECKED BY: KALAFARSKI	DATE: 9/4/13
PROJECT NUMBER: 972833401	
SHEET TITLE: FIRE ALARM SYSTEM SECOND FLOOR PLAN	
SHEET NUMBER: FA-102 FA-102.dwg	