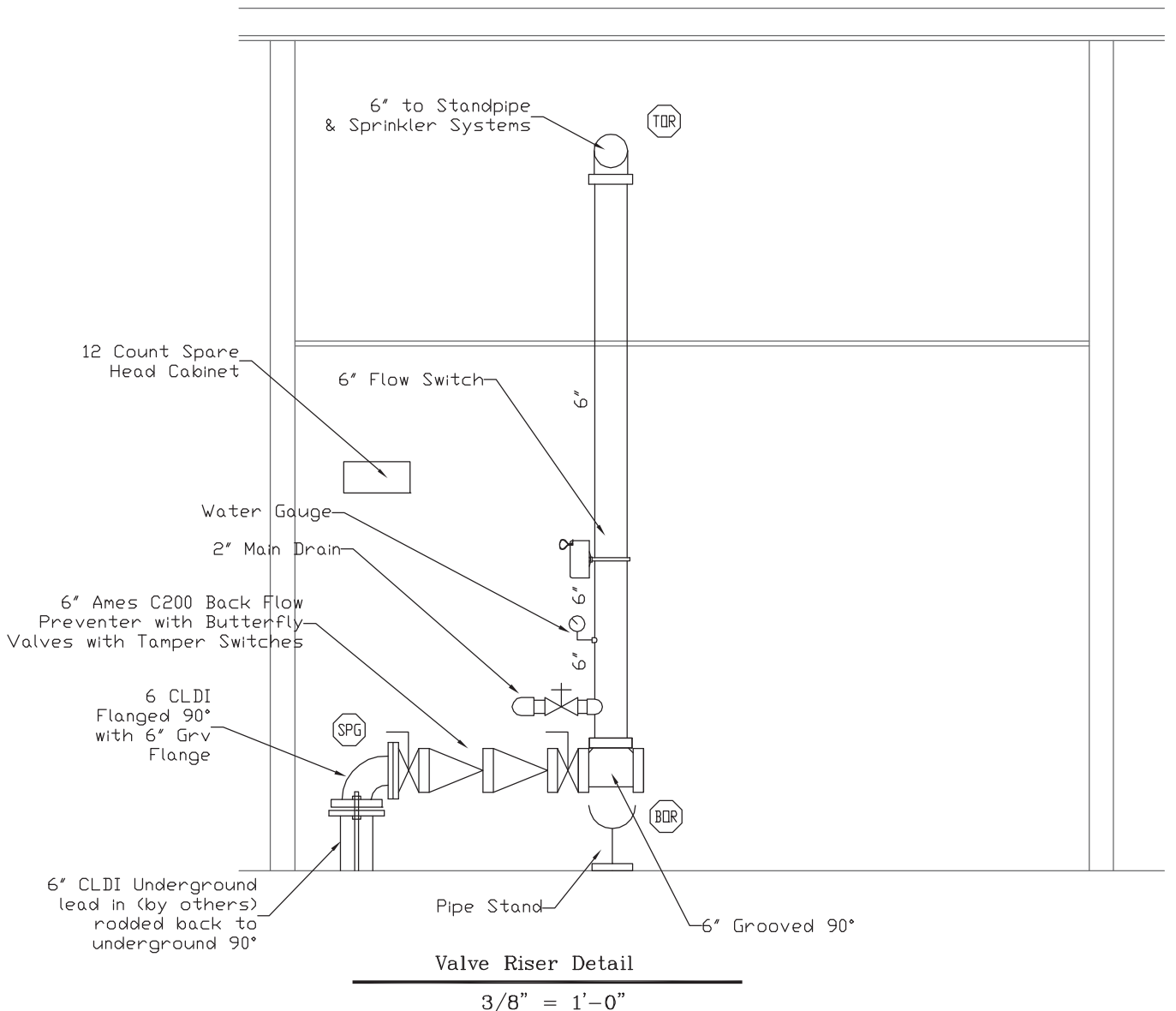
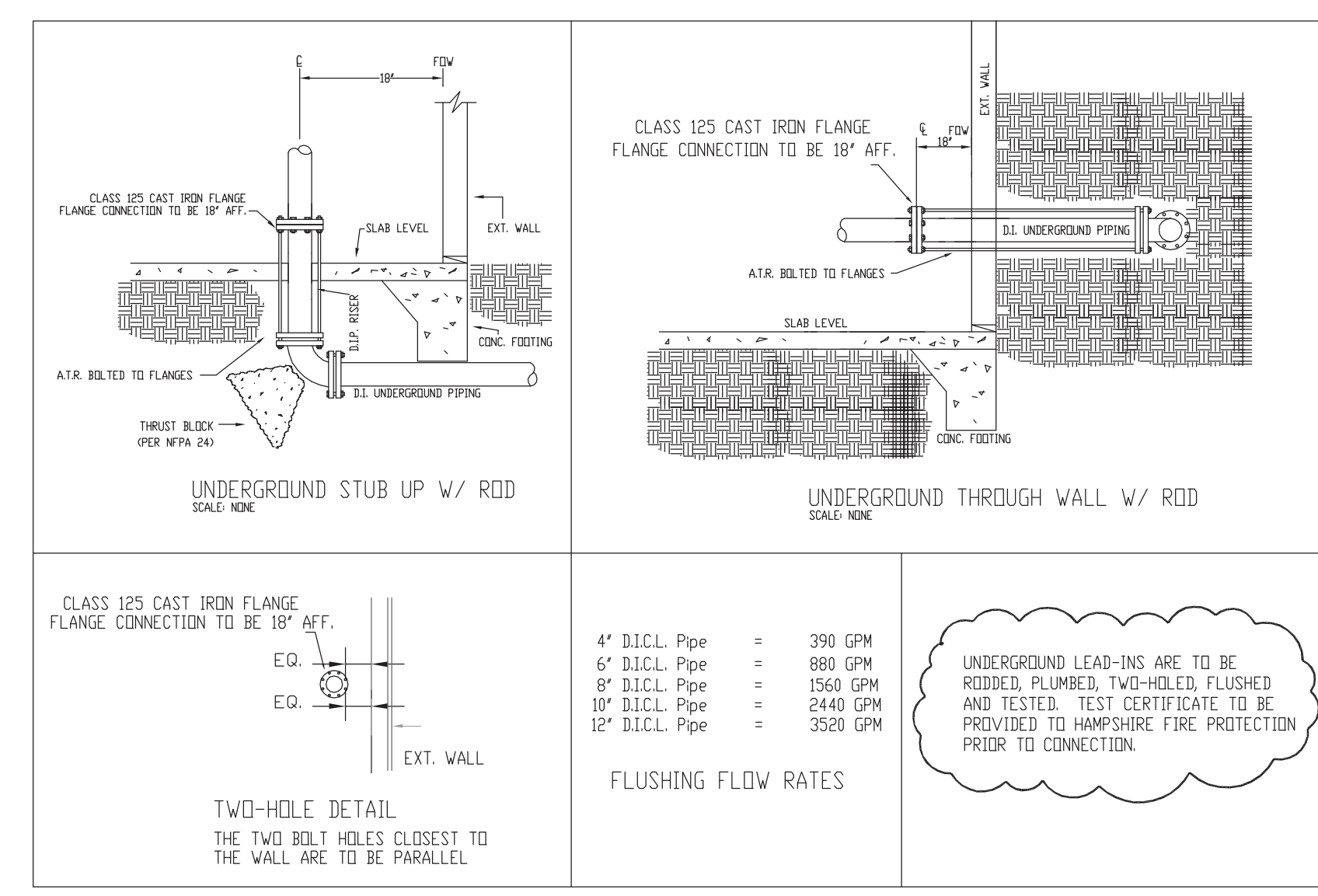


Heat & Insulation to prevent wet sprinkler piping from freezing is req and is by others.

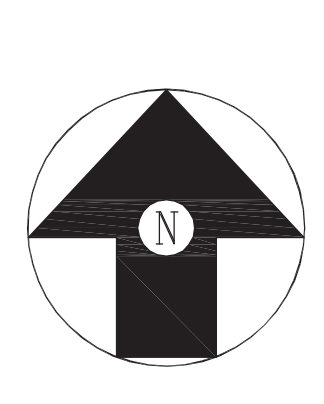


1st Floor Fire Sprinkler Plan
1/8" = 1'-0"

Sprinkler Head Schedule					
Symbol	Count	Thread	K-Factor	Description	Note
●	77	1/2"	5.6	RELIABLE F1FR-56, 155' WHITE RECESSED PENDENT	RA1414
○	60	1/2"	5.6	RELIABLE F1FR-56, 155' BRASS UPRIGHT	RA1425
●	23	1/2"	5.6	RELIABLE F3QR WHITE RECESSED DRY PENDENT 200'	R5714
◄	3	1/2"	5.6	RELIABLE G STD RESP HSW 212'	R1235
163 = Total Number of Heads this floor					



UNDERGROUND DETAIL
NOT TO SCALE



Hampshire
FIRE PROTECTION
8 NORTH WENTWORTH AVENUE LONDONDERRY, NH 03053
PH: (603) 432-8221 FAX: (603) 434-3194
WEBSITE: HAMPSHIREFIRE.COM
MASS LIC# 003841 MAINE LIC# 238
VERMONT CERTIFIED

WATER SUPPLY DATA	
Static pressure	108 psi
Residual pressure	102 psi
Flow	1537 gpm
Location Corner of Commercial & Maple	
Elevation 0'-0"	
Date	May 11 2013 Time 6:00 AM
Information Portland Water	

SPRINKLERS	
Total This Sheet	Total This Job
Symbol	Description

Drawing Title		
1st Floor Fire Sprinkler Plan		
Contract	No4396CME	Date:
Drawn By	EVW	Revisions:
Scale	As Noted	1
Date	05-25-13	2
Approval	By Portland MR	3
		4
		5
		6
		7

Project:	
Marriott Courtyard Hotel 321 Commercial Street Portland ME 04101	
Contract with:	
Opeechee Construction 11 Corporate Drive Belmont NH 03220	

FIRE PROTECTION ENGINEER STAMP