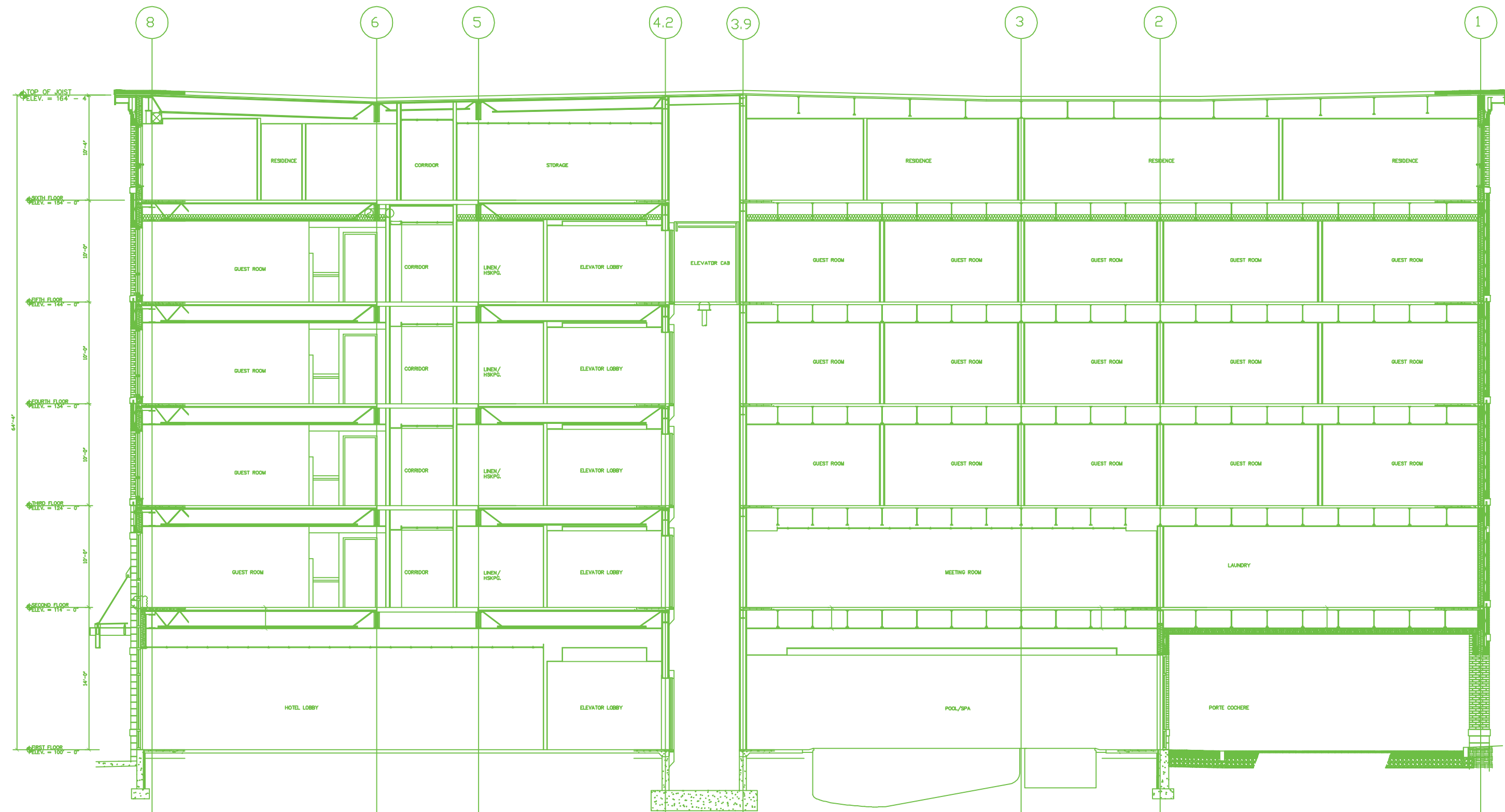
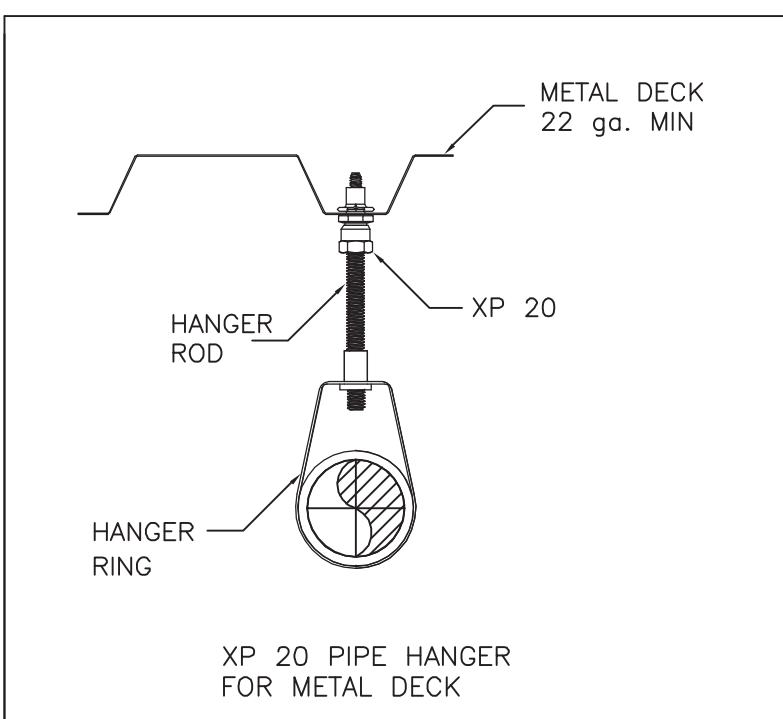
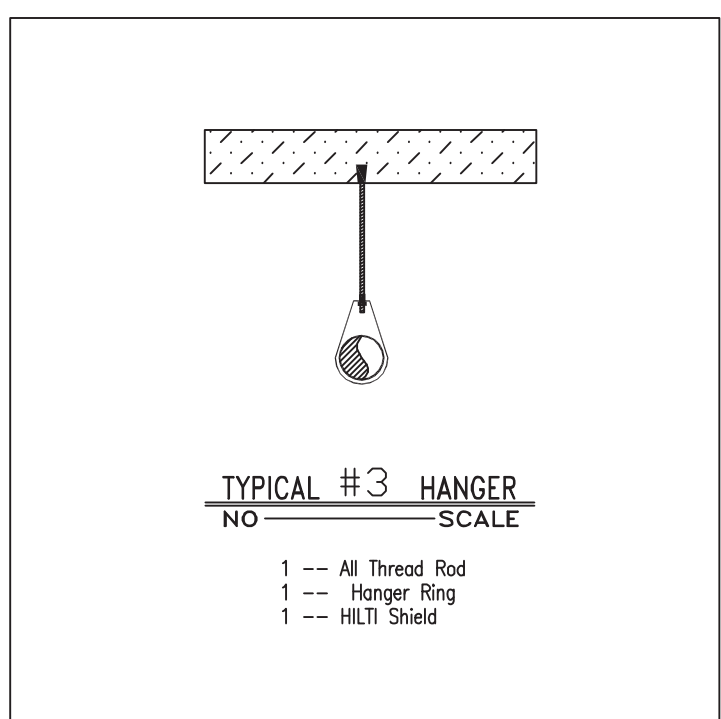
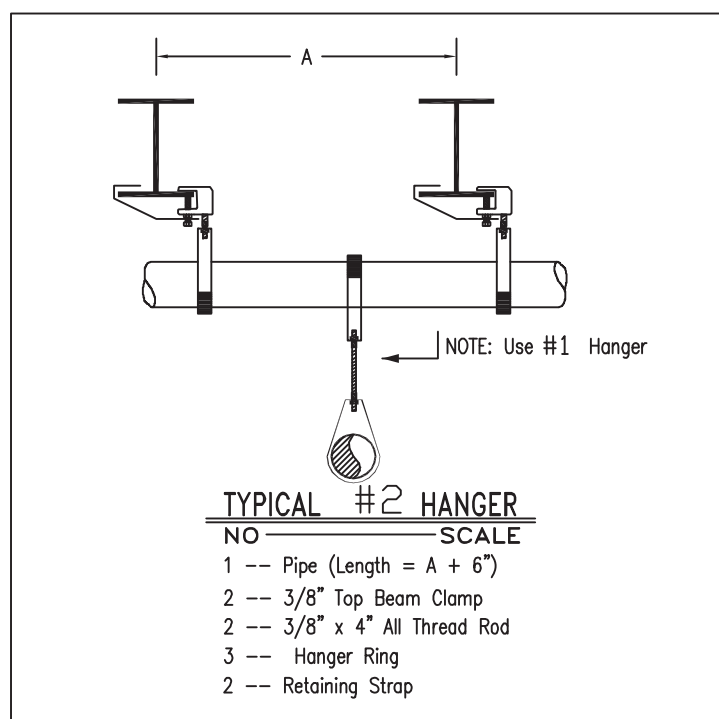
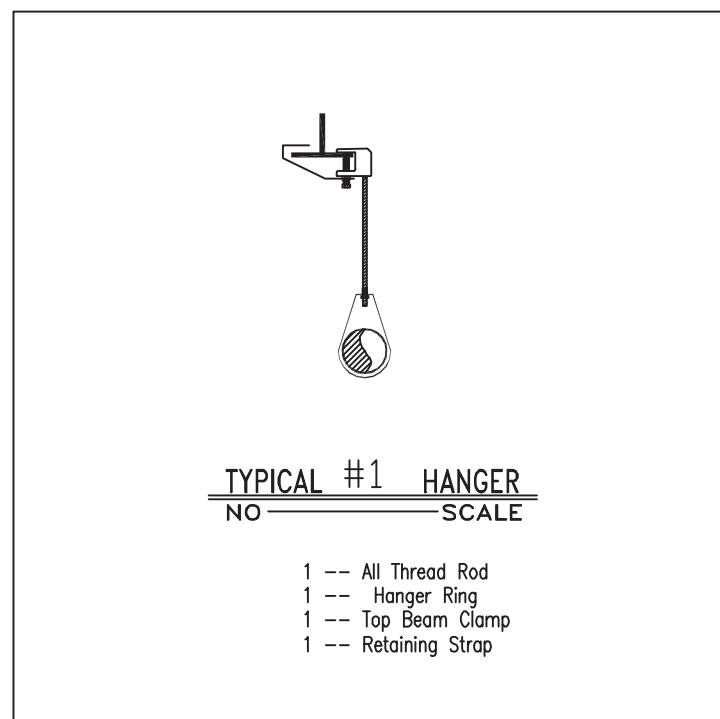


Fire Sprinkler Site Plan
1" = 50'-0"



Building Cross Section
1/8" = 1'-0"

GENERAL NOTES

ALL NEW PIPING TO BE HYDROSTATICALLY TESTED AT NOT LESS THAN 200 PSI FOR 2 HOURS OR AT 50 PSI IN EXCESS OF THE MAXIMUM PRESSURE, WHEN THE MAXIMUM PRESSURE TO BE MAINTAINED IS IN EXCESS OF 150 PSI, PER NFPA 13. DESIGN IS BASED ON LIGHT AND ORDINARY HAZARD.

ALL PIPING 24" AND UP IS SCHEDULE 10 BLACK STEEL, 2" AND UNDER IS SCHEDULE 40 BLACK STEEL.

ALL SYSTEM PIPING TO BE HUNG PER NFPA 13.

ALL ELECTRIC, ALARM OR CONTROL WIRING IS THE RESPONSIBILITY OF OTHERS.

ANY AND ALL REQUIRED BEAM PENETRATIONS ARE THE RESPONSIBILITY OF OTHERS OWNER TO PROVIDE ADEQUATE HEAT TO PREVENT FREEZING OF PIPE .

ALL MATERIALS ARE TO BE UL LISTED AND/OR FM APPROVED FOR USE IN FIRE PROTECTION SYSTEMS.

ANY AND ALL UNDERGROUND WORK IS THE RESPONSIBILITY OF OTHERS.

PAINTING OF PIPING OR EQUIPMENT IS BY OTHERS.

ANY AND ALL WORK REQUIRED FOR THE KITCHEN HOOD SYSTEM IS BY OTHERS.

THE FURNISHING AND OR INSTALLING OF FIRE EXTINGUISHERS OR CABINETS ARE BY OTHERS.

NO STORAGE IS ALLOWED TO EXCEED TWELVE FEET IN HEIGHT.

SYSTEM IS DESIGNED AS LIGHT HAZARD IN ALL AREAS EXCEPT MECHANICAL ROOMS (ORDINARY HAZARD GROUP 1), STORAGE AREAS (ORDINARY HAZARD GROUP 1D), ELECTRICAL ROOMS (ORDINARY HAZARD GROUP 1D), AND KITCHEN (ORDINARY HAZARD GROUP 1D). ORDINARY HAZARD GROUP 1 AREAS ARE DESIGNED TO DELIVER 28 GPM PER SQ FT OVER THE MOST REMOTE 1500 SQ FT WITH A HOSE ALLOWANCE OF 250 GPM. ORDINARY HAZARD GROUP 1 AREAS ARE DESIGNED TO DELIVER 15 GPM PER SQ FT OVER THE MOST REMOTE 1500 SQ FT WITH A HOSE ALLOWANCE OF 250 GPM. LIGHT HAZARD AREAS ARE DESIGNED TO DELIVER 10 GPM PER SQ FT OVER THE MOST REMOTE 1500 SQ FT WITH A HOSE ALLOWANCE OF 100 GPM. AREAS ARE REDUCED PER NFPA #13 FOR SPRINKLERS AND APPLICABLE CEILING HEIGHT.

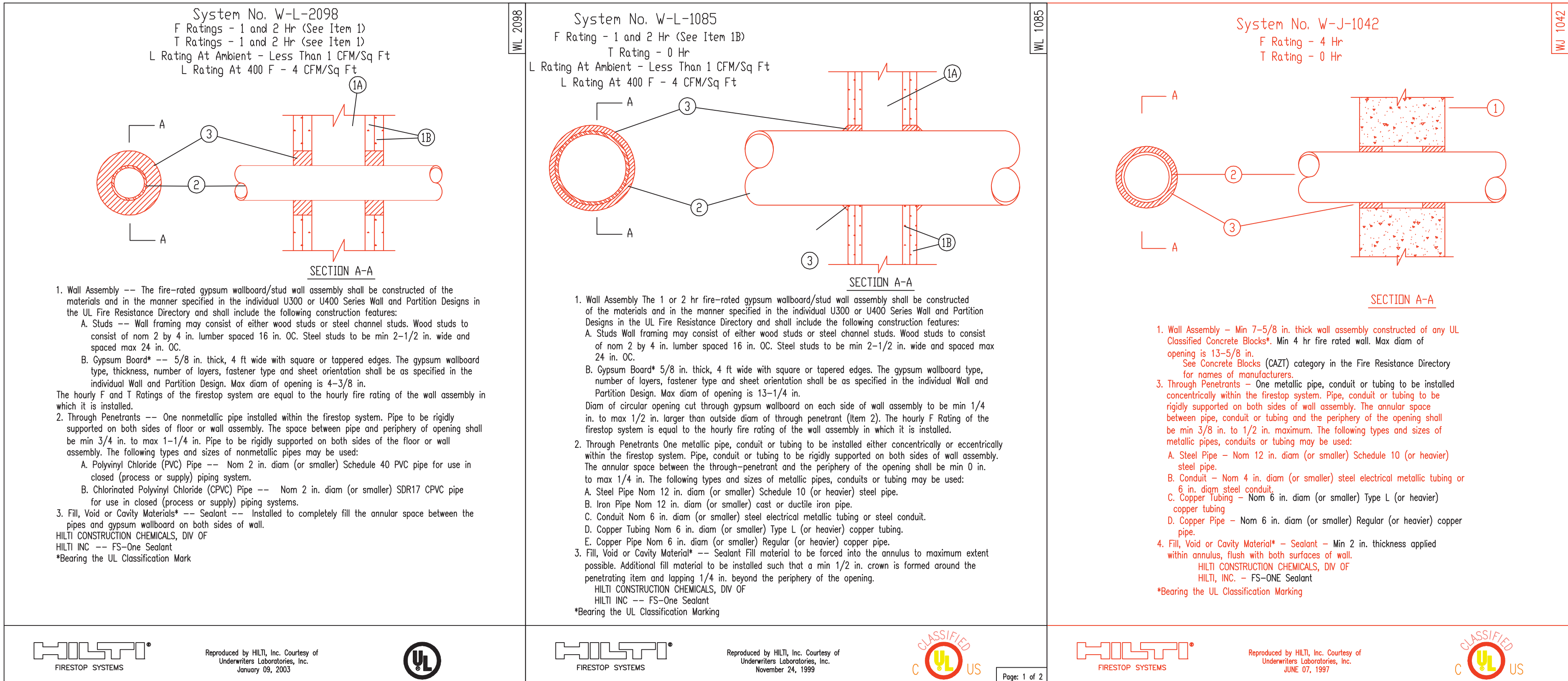
PIPES PENETRATING CONCRETE BLOCK OR FIRE RATED WALLS SHALL HAVE FLEXIBLE GROOVED COUPLING WITHIN 1'-0" ON EITHER SIDE OF THE WALL.

Plans prepared by :

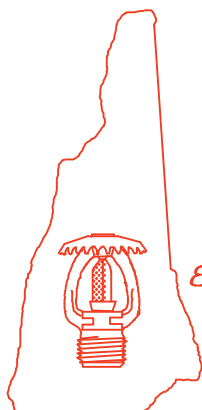
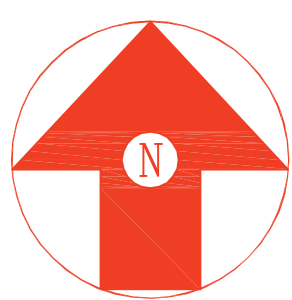
Brian Benoit

RMS #280

NICET Level III, 075934



Wall Penetration Details



Hampshire
FIRE PROTECTION
8 NORTH WENTWORTH AVENUE LONDONDERRY, NH 03053
PH: (603) 432-8221 FAX: (603) 434-3194
WEBSITE: HAMPSHIREFIRE.COM
MASS LIC# 003841 MAINE LIC# 238
VERMONT CERTIFIED

WATER SUPPLY DATA		SPRINKLERS	
Static pressure	108 psi	Total This Sheet	Total This Job
Residual pressure	102 psi	Symbol	Description
Flow	1537 gpm		
Location	Corner of Commercial & Maple		
Elevation	0'-0"		
Date	May 11 2013	Time	6:00 AM
Information	Weyland Water		

Fire Sprinkler Site Plan, Notes & Details		
Contract	No4396CME	Revisions:
Drawn By	EVW	1
Scale	As Noted	2
Date	05-25-13	3
Approval	By Portland MB	4
		5
		6
		7

Project:	Marriott Courtyard Hotel 321 Commercial Street Portland ME 04101
Contract with:	Opechee Construction 11 Corporate Drive Belmont NH 03220

FIRE PROTECTION ENGINEER STAMP