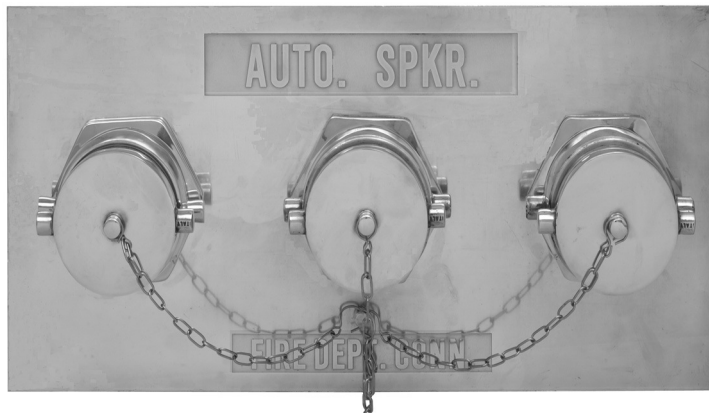


**THREE-WAY CLAPPER INLET**



**Figure No. 6115-6117**

An Auxiliary Inlet Connection with 750 G.P.M. minimum inlet capacity. Used to supplement fire protection water supply. Flush design enhances appearance and provides unobstructed passage.

**STANDARD EQUIPMENT:** Cast brass, three way body with drop clappers, 6" back outlet or 6" bottom or top connections as selected by figure number, brass plate, adapters and plugs with chains.

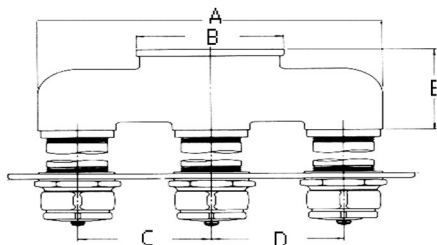
**SPECIFY THREAD AND BRANDING.**

**BRANDING:** "Standpipe", "Auto Spkr", "Combination Standpipe and Sprinkler Systems", "Dry Standpipe". Special lettering available.

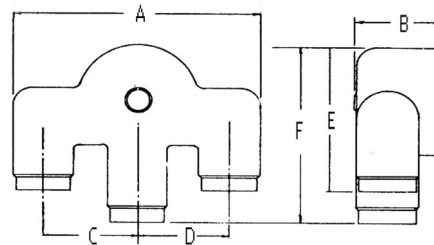
**OPTIONAL FINISHES:**

PB - Polished Brass

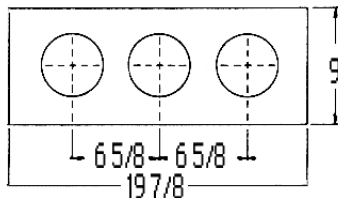
PC - Polished Chrome Plated



**Diagram of 6115 Body**



**Diagram of 6116/6117 Body**



**Diagram of plate for 6115-6117 Siamese**

OUTLET LOCATIONS			SIZE	DIMENSIONS					
BACK Fig. No.	BOTTOM Fig. No.	TOP Fig. No.		A	B	C	D	E	F
6115			6 X 2 1/2 X 2 1/2 X 2 1/2	17 5/16	7 3/8	6 5/8	6 5/8	6 1/8	
	6116	6117	6 X 2 1/2 X 2 1/2 X 2 1/2	16	7 3/4	6 5/8	6 5/8	10	12 1/2