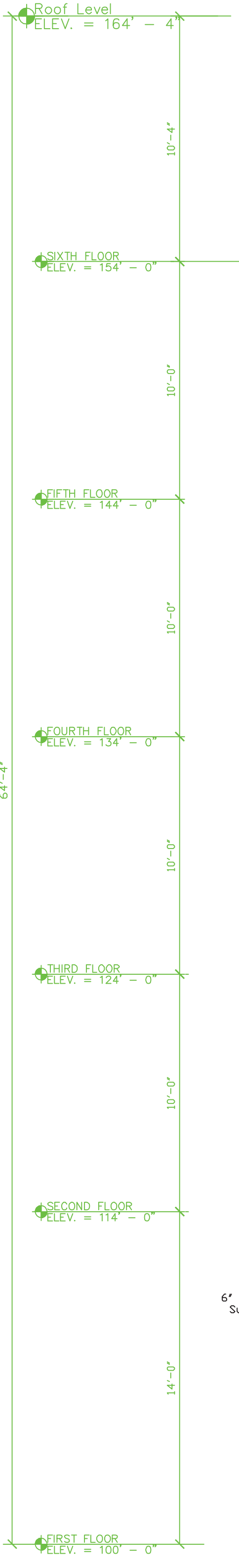


Area 83 Hydraulic Calculation - 2nd Floor Laundry

1. Criteria: 15.0 gpm per square foot over the next remote 980 square feet with a hose allowance 250 gpm added. Area reduced for 8' sprinklers and 8' of ceiling height.
2. 100 sprinklers operating.
3. System demand at flow test: 4824 GPM @ 7.58 PSI. This includes 250 GPM hose allowance. A Safety Factor of 2733 PSI is available.

Standpipe Hydraulic Calculation

1. Criteria: 250 GPM @ 100 PSI at Next Remote F.D. Valve and 250 GPM at next F.D. Valve or remote standpipe and 250 GPM added at the connection to the next standpipe. Does not include where Fire Department will provide 750 GPM @ 100 PSI from the water truck.
2. 100 valves operating.
3. System demand at Fire Department Connection: 750 GPM @ 142.85 PSI. A Safety Factor of 195 PSI is available.



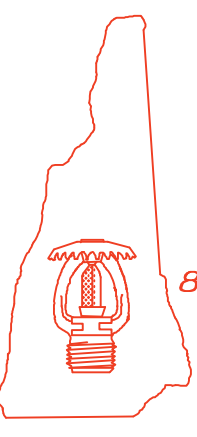
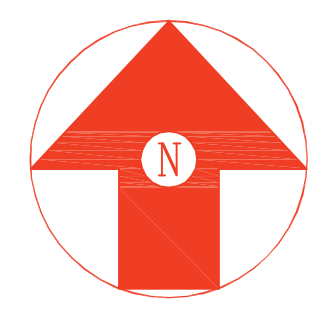
2nd Floor Fire Sprinkler Plan
1/8" = 1'-0"

Sprinkler Head Schedule

Symbol	Count	Thread	K-Factor	Description	Note
●	80	1/2"	5.6	RELIABLE F1FR-56, 155' WHITE RECESSED PENDENT	RA1414
○	25	3/4"	8.0	RELIABLE F1FR WHITE OR EXTENDED COVERAGE RECESSED PENDENT	R4842
⊙	50	1/2"	4.2	RELIABLE F1FR WHITE OR RECESSED PENDENT	RA1413
○	1	1/2"	5.6	RELIABLE F1FR-56, 155' BRASS UPRIGHT	RA1425
◁	1	1/2"	5.6	RELIABLE G STD RESP HSW 212'	R1235

157 = Total Number of Heads this floor

Stair "A" Standpipe Detail
1/4" = 1'-0"



Hampshire
FIRE PROTECTION
8 NORTH WENTWORTH AVENUE LONDONDERRY, NH 03053
PH: (603) 432-8221 FAX: (603) 434-3194
WEBSITE: HAMPSHIREFIRE.COM
MASS LIC# 005841 MAINE LIC# 238
VERMONT CERTIFIED

WATER SUPPLY DATA
Static pressure 108 psi
Residual pressure 102 psi
Flow 1537 gpm
Location Corner of Commercial & Maple
Elevation 0'-0"
Date May 11 2013 Time 6:00 AM
Information Portland Water

SPRINKLERS
Total This Sheet
Symbol Description

Drawing 2nd Floor Fire Sprinkler Plan
Contract No: 4398CMB
Drawn By: EWV
Scale: As Noted
Date: 05-25-13
Approval By: Portland ME

Revisions:

Revisions	Date
1	
2	
3	
4	
5	
6	
7	

Project:
Marriott Courtyard Hotel
321 Commercial Street
Portland ME 04101
Contract with:
Opechee Construction
11 Corporate Drive
Belmont NH 03220

FIRE PROTECTION ENGINEER STAMP