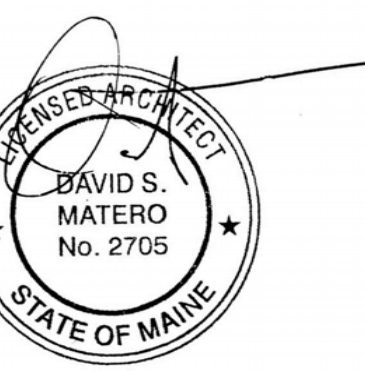


Consultants

Revisions

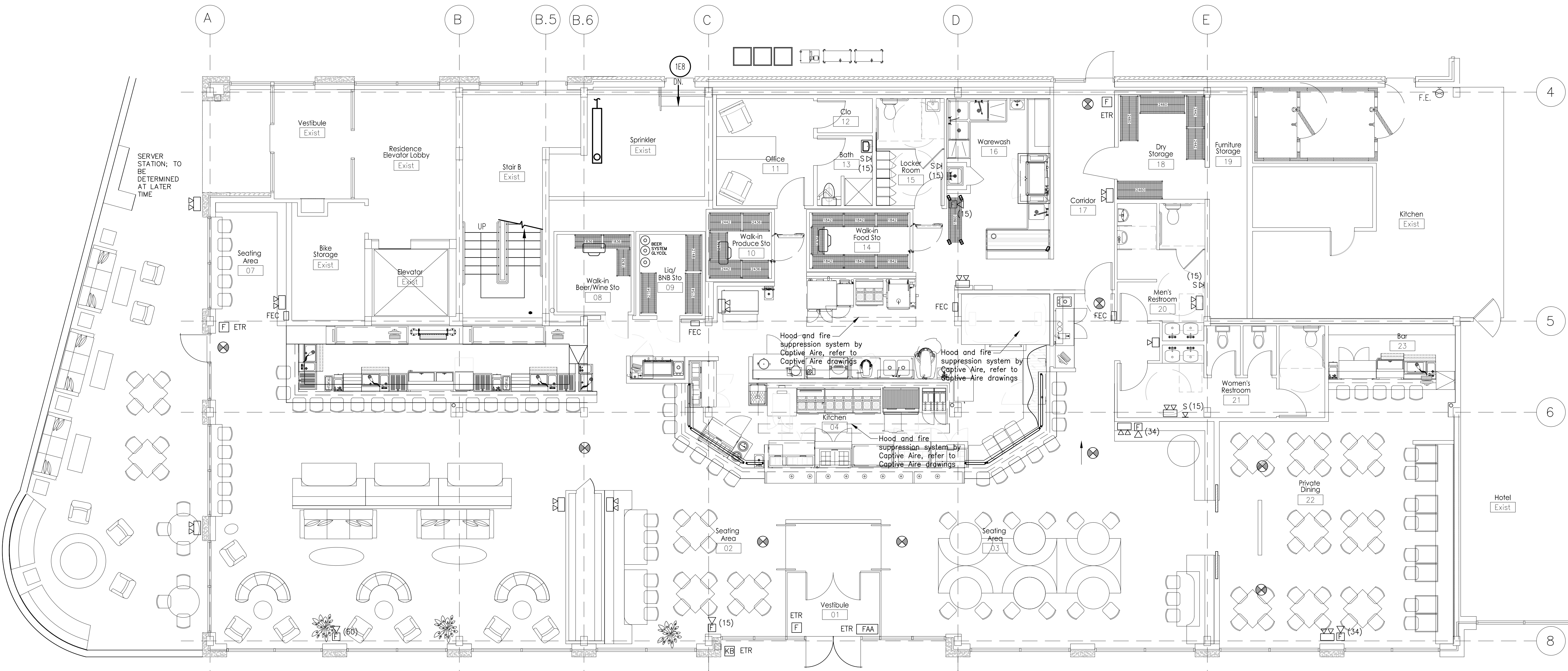
TIQA
311 Commercial Street
Portland, Maine



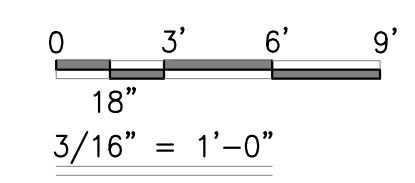
Job Number: 14.000
Date: 09.30.14
Scale: 1/8" = 1'-0"

Drawing Title:
**Electrical
Life Safety
Plan**

R.4
Issued for
Permit



1 First Floor Plan
Scale: 3/16" = 1'-0"



GENERAL NOTES - VISUAL NOTIFICATION

- Flash rate of strobe shall not exceed two flashes per second (2Hz) nor be less than one flash every second (1Hz) throughout the listed voltage range of the appliance.
- Maximum pulse duration shall be 0.2 seconds with a maximum duty cycle of 40%.
- Wall mounted strobes shall be mounted such that the entire lens is not less than 80" and not greater than 96" above the finished floor or at mounting height specified using the performance-based alternative.
- If two groups of strobes are in the same room or visible, each group shall be synchronized, including if strobes are operated by separate systems.
- In square rooms w/ strobes not centered or in non-square rooms, the effective intensity from one strobe shall be determined by the max room size dimension by measuring the distance to the farthest wall or by doubling the distance to the farthest adjacent wall, whichever is greater.
- Strobes shall be located not more than 15' from the end of a corridor with a separation not greater than 100' and shall flash in synchronization. The effective intensity shall be rated not less than 15 cd.

Strobe Quantity and Intensity for Ceiling Mounted Appliances

Room Size	Maximum lens height	Effective Intensity, one light (cd)
20 x 20	10	15
30 x 30	10	30
40 x 40	10	60
44 x 44	10	75
20 x 20	20	30
30 x 30	20	45
44 x 44	20	75
46 x 46	20	80
20 x 20	30	55
30 x 30	30	75
50 x 50	30	95
53 x 53	30	110
55 x 55	30	115
59 x 59	30	135
63 x 63	30	150
68 x 68	30	177
70 x 70	30	185

Strobe Quantity and Intensity for Wall Mounted Appliances

Room Size	Effective Intensity (cd), One light per room	Effective Intensity (cd), Four lights per room, one light per wall
20 x 20	15	NA
28 x 28	30	NA
30 x 30	34	NA
40 x 40	60	15
45 x 45	75	19
50 x 50	94	30
54 x 54	110	30
55 x 55	115	30
60 x 60	135	30
63 x 63	150	37
68 x 68	177	43
70 x 70	184	60
80 x 80	240	60
90 x 90	304	95
100 x 100	375	95
110 x 110	455	135
120 x 120	540	135
130 x 130	635	185

NOTES

- Life safety equipment and locations shall conform to all applicable codes.
- Fully test and inspect sprinkler system.
- Provide smoke detectors on both sides of doors with magnetic hold opens.
- Provide pull station at each assembly door egress.
- Provide duct smoke detectors at each 2,000 CFM supply duct.
- Provide duct smoke detectors at each 15,000 CFM supply and exhaust duct.
- Obtain water supply flow test if available within last three years, if not available test must be conducted.
- All sprinkler heads must be quick response type.
- Integrate kitchen smoke/fire detection/suppression system with main fire panel. Provide automatic cooking fuel shut-off mechanism.
- Electrical outlets shall be provided for all plug-in equipment. All other outlets shall be located per all applicable codes.
- Refer to food service drawings for all equipment requiring direct wiring.
- Fire alarm system notification shall be via approved voice communication, or public address system that is audible above the ambient noise level of assembly occupancy. Notification shall be by means of voice announcements, either live or prerecorded initiated by the person in the constantly attended location.
- Provide laminated floor plan at each public room indicating direction to building exit.

Fire Extinguisher Cabinet

FEC Fire Extinguisher Cabinet by Larsen or approved equivalent. Include Class K hazard in Kitchen

Portable Fire Extinguishers:

- Location of fire extinguishers and cabinets shall conform to NFPA 10 Standards for Fire Extinguisher Cabinets.
- Portable fire extinguisher rating shall be 2-A, spacing shall not exceed a maximum of 75' and 3,000 sf.
- Portable fire extinguisher rating in combustible cooking media exist shall be rated Class K, spacing shall not exceed a maximum travel distance of 30'.
- Provide rated cabinet if fully/semi recessed installed in rated partition.

SYMBOL LEGEND

- LED Exit Light (unswitched)
- LED Exit Light w/ Directional Arrow (unswitched)
- Self Contained, wall-mounted, Emergency Lighting Unit with 2 Heads and battery backup
- Self Contained, ceiling-mounted, Emergency Lighting Unit with 2 Heads and battery backup
- Single Head Remote Emergency Light
- Fire Alarm Audio/Visual, mount 6'-8" AFF, dB Level in Field (Candela Level)
- Fire Alarm Visual Strobe only, Flush mount 6'-8" AFF, (Candela Level)
- System connected Smoke Detector, photoelectric type w/ Sounder base
- Fire Alarm pull station, mount 48" AFF
- Fire Alarm Annunciator, location to be approved by Portland Fire Department
- Knox Box (location and type to be approved by Portland Fire Department)
- Fire extinguisher cabinet and type
- ETR Existing to Remain
- MHO Magnetic Hold Open (requires smoke detectors located on each side of door and connected to sprinkler system)
- WP Exterior grade / waterproof