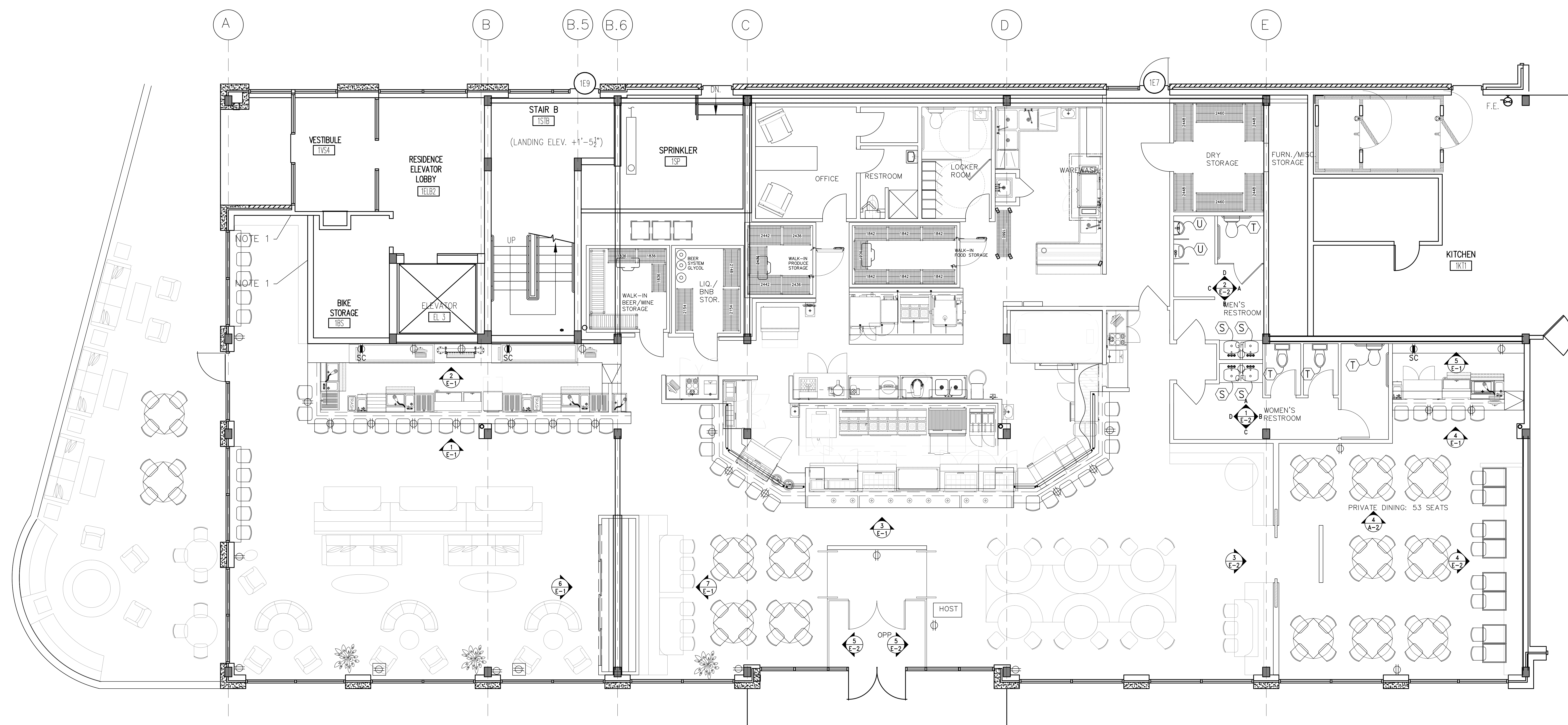
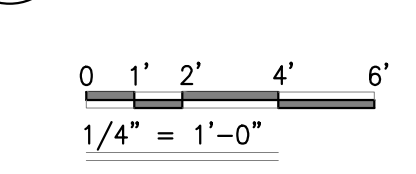


Consultants

Revisions



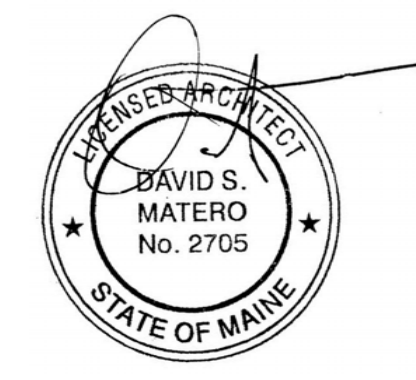
1 GROUND FLOOR FF&E PLAN
Scale: 1/4" = 1'-0"



FF&E PLAN LEGEND	
•	GC 8 TO COORDINATE WITH KITCHEN DESIGNER ALL POWER REQUIREMENTS FOR ALL EQUIPMENT
(X)	SYMBOL DENOTES COLUMN LINE NUMBER OR LETTER
(E)	NEW FLOOR MOUNTED DUPLEX OUTLET
(E)	NEW DUPLEX ELECTRICAL OUTLET
(E-F)	NEW GROUND FAULT CIRCUIT DUPLEX ELECTRICAL OUTLET
(SC)	NEW SEPARATE CIRCUIT DUPLEX ELECTRICAL OUTLET
(T)	NEW TELEPHONE/DATA OUTLET
(S)	NEW PREMIER COPPER OVAL SKIRTED VESSEL HAMMERED COPPER SINK & FAUCET BY VAN DYKES RESTORES
(U)	NEW URINAL BY AMERICAN STANDARD WASHBLOCK 1.0 GPF WASHOUT TOP SPUD URINAL WITH MANUAL FLUSH VALVE SYSTEM
(T)	NEW TOILET BY KOHLER: K-4325-1-0 KINGSTON 1.28 TOILET BOWL WITH TOP SPUD AND BEDPAN LUGS OR EQUAL

NOTES:
1) GC 8 TO INSTALL (3) NEW ADJUSTABLE WOOD SHELVES ON BRACKETS ALONG ENTIRE WALL VP WITH INTERIOR DESIGNER DESIRED HEIGHT OF SHELVES.

TIQA
311 Commercial Street
Portland, Maine



Job Number: 14.000
Date: 09.30.14
Scale: 1/4" = 1'-0"

Drawing Title:
**Ground Floor
FF&E Plan**

A.1
Issued for
Permit