

TIQA

Commercial Street
Portland, MA 04101

ISSUES

ISSUE	DATE	DESCRIPTION OF ISSUE	BY
A	8/5/24	MECHANICAL CONNECTIONS	CMB
D	8/20/24	CONCRETE PER. SLOP. PROPOSAL	CMB
C	8/20/24	SERVICES STATION OWNERS	CMB
D	8/20/24	CEILING SUPPLY	CMB
E	8/20/24	EQUIPMENT CONCRETE	CMB
F	8/27/24	UNDERGROUND PLUMBING	CMB
D	8/27/24	GENERAL EQUIPMENT REVISIONS	MIT
H	8/27/24	GEN. USE. FTR. FRAMES/ROD #84	CMB
I	8/27/24	PROVIDE 100' CABLES	DM
K	8/27/24	REVISIONS TO PRIVATE DINING ROOM	DM

APPROVAL

- APPROVED AS SUBMITTED
- APPROVED AS NOTED
- NOT APPROVED/RESUBMIT

REVIEW BY: _____ DATE: _____

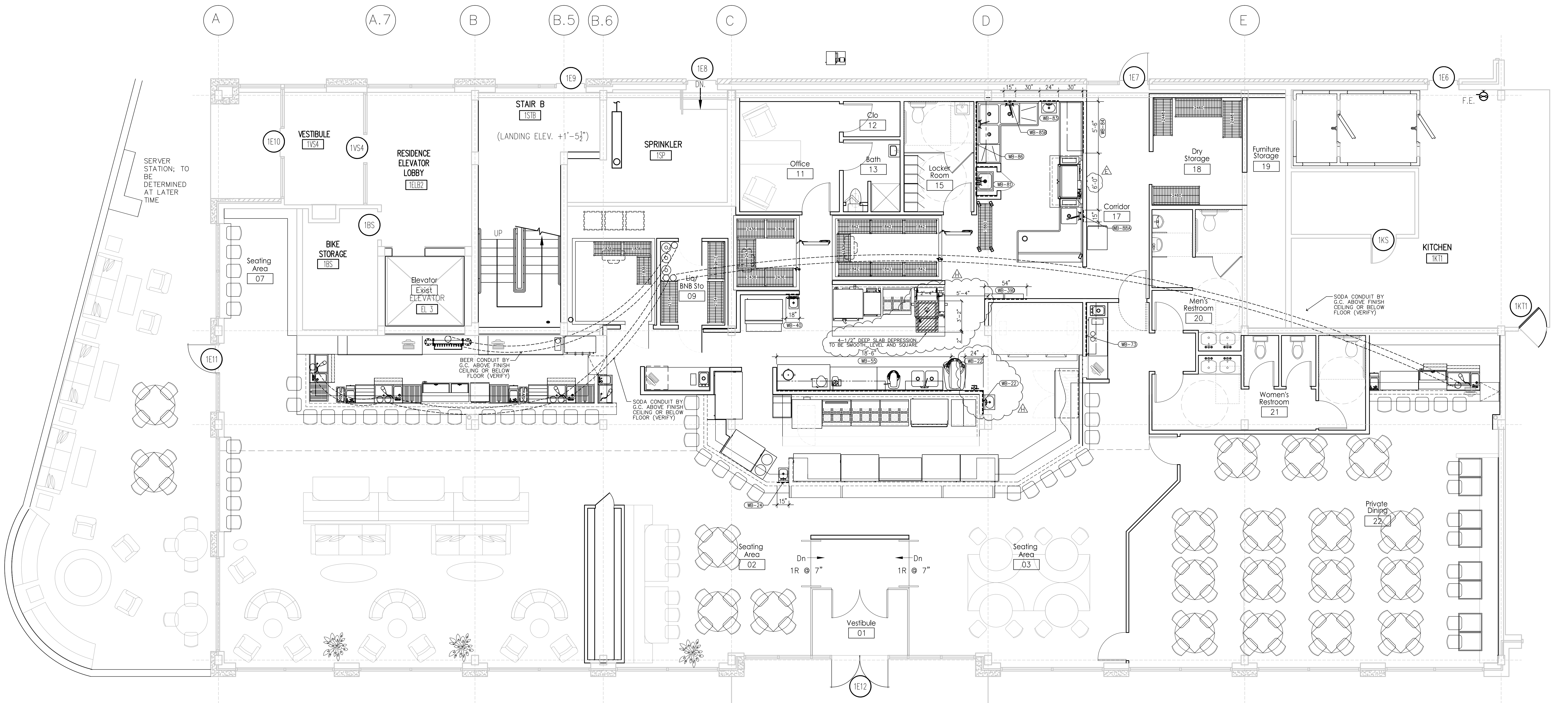
GENERAL NOTES

- A**
THESE PLANS ARE PREPARED FOR THE CONVENIENCE OF OTHERS TO LOCATE MECHANICAL POINTS OF CONNECTION FOR FOODSERVICE EQUIPMENT. THEY ARE AS ACCURATE AS CAN BE DETERMINED AT THIS DATE. DIMENSIONS MAY DEVELOP BETWEEN DIMENSIONS SHOWN, FINISHED DIMENSIONS, AND UTILITY CONNECTIONS/ROUGH INFORMATION.
- B**
TRIMARK UNITED EAST IS NOT RESPONSIBLE FOR ANY UTILITY REQUIREMENTS REGARDING EXISTING EQUIPMENT TO BE REUSED. IT IS THE RESPONSIBILITY OF THE GENERAL CONTRACTOR AND ELECTRICAL, PLUMBING & HVAC CONTRACTORS TO VERIFY & COORDINATE ALL SERVICE REQUIREMENTS WITH OWNER TO ENSURE PROPER CONNECTIONS.
- C**
TRIMARK UNITED EAST IS NOT RESPONSIBLE FOR ANY UTILITY REQUIREMENTS REGARDING EXISTING EQUIPMENT IN KITCHEN EQUIPMENT CONTRACT. IT IS THE RESPONSIBILITY OF THE GENERAL CONTRACTOR AND ELECTRICAL, PLUMBING & HVAC CONTRACTORS TO VERIFY & COORDINATE ALL SERVICE REQUIREMENTS WITH OWNER TO ENSURE PROPER CONNECTIONS.
- D**
ALL ELECTRICAL, PLUMBING, AND MECHANICAL UTILITY REQUIREMENT INFORMATION LISTED ON THE FOODSERVICE PLANS, IS SUBJECT TO CHANGE, BASED UPON FINAL EQUIPMENT PROPOSAL, SELECTED BY THE OWNER AND/OR CONTRACTOR.

FOODSERVICE EQUIPMENT PLAN Special Conditions

PROJECT #:	14-129
QUOTE #:	*****
DRAWN BY:	CMB
CHECKED BY:	-
CONTRACT REP.:	JRD
DRAWING SCALE:	1/4"=1'-0"
SHEET NUMBER:	

K.501



WALL BLOCKING SCHEDULE

WB-22 3/4" WALL BLOCKING FROM 24" TO 84"-AFF FOR ITEM 22, HAND SINK & ITEM 71, POT FILL FAUCET. SOAP & TOWEL DISPENSERS ARE BY OTHERS.

WB-24 3/4" WALL BLOCKING FROM 24" TO 84"-AFF FOR ITEM 24, HAND SINK. SOAP & TOWEL DISPENSERS ARE BY OTHERS.

WB-30 3/4" WALL BLOCKING FROM 72"-AFF TO FINISH CEILING FOR ITEMS 39-D & 66-D, FIRE SUPPRESSION SYSTEMS.

WB-40 3/4" WALL BLOCKING FROM 24" TO 84"-AFF FOR ITEMS 40, WATER FILTER ASSEMBLIES & ITEM 24, HAND SINK. SOAP & TOWEL DISPENSERS ARE BY OTHERS.

WB-55 3/4" WALL BLOCKING FROM 48" TO 84"-AFF FOR ITEMS 55 & 60, WALL SHELVES.

WB-73 3/4" WALL BLOCKING FROM 48" TO 72"-AFF FOR ITEM 73, WALL SHELF.

WB-81 3/4" WALL BLOCKING FROM 48" TO 72"-AFF FOR ITEM 81, MOP SINK FAUCET & MOP HANGER.

WB-83 3/4" WALL BLOCKING FROM 24" TO 84"-AFF FOR ITEM 83, HAND SINK. SOAP & TOWEL DISPENSERS ARE BY OTHERS.

WB-84 3/4" WALL BLOCKING FROM 48" TO 84"-AFF FOR ITEM 84, RACK SHELF.

WB-88 3/4" WALL BLOCKING FROM 48" TO 72"-AFF FOR ITEM 85-B, PRE-RINSE FAUCET.

WB-86 3/4" WALL BLOCKING FROM 48" TO 72"-AFF FOR ITEM 86, WALL SHELF.

WB-88A 3/4" WALL BLOCKING FROM 48" TO 72"-AFF FOR ITEM 88-A, PRE-RINSE FAUCET.