

TIQA

Commercial Street
Portland, MA 04101

ISSUES

ISSUE	DATE	DESCRIPTION OF ISSUE	BY
A	8/5/24	MECHANICAL CONNECTIONS	JAD
B	8/20/24	CONCRETE PER. SLOP. PROPOSAL	JAD
C	9/2/24	SERIES STATION CHANGES	JAD
D	9/2/24	CEILING HEIGHTS	JAD
E	9/2/24	EQUIPMENT CHANGES	JAD
F	10/7/24	INTERIOR FINISHES	JAD
G	10/22/24	GENERAL EQUIPMENT REVISIONS	MT
H	10/22/24	GEN. ELEC. PANELS, RCP, B4	JAD
I	10/22/24	FRONT END COUNTERS	JAD
K	11/6/24	REVISIONS TO PRIVATE DINING ROOM	JAD

APPROVAL

- APPROVED AS SUBMITTED
 APPROVED AS NOTED
 NOT APPROVED/RESUBMIT

REVISED BY: DATE:

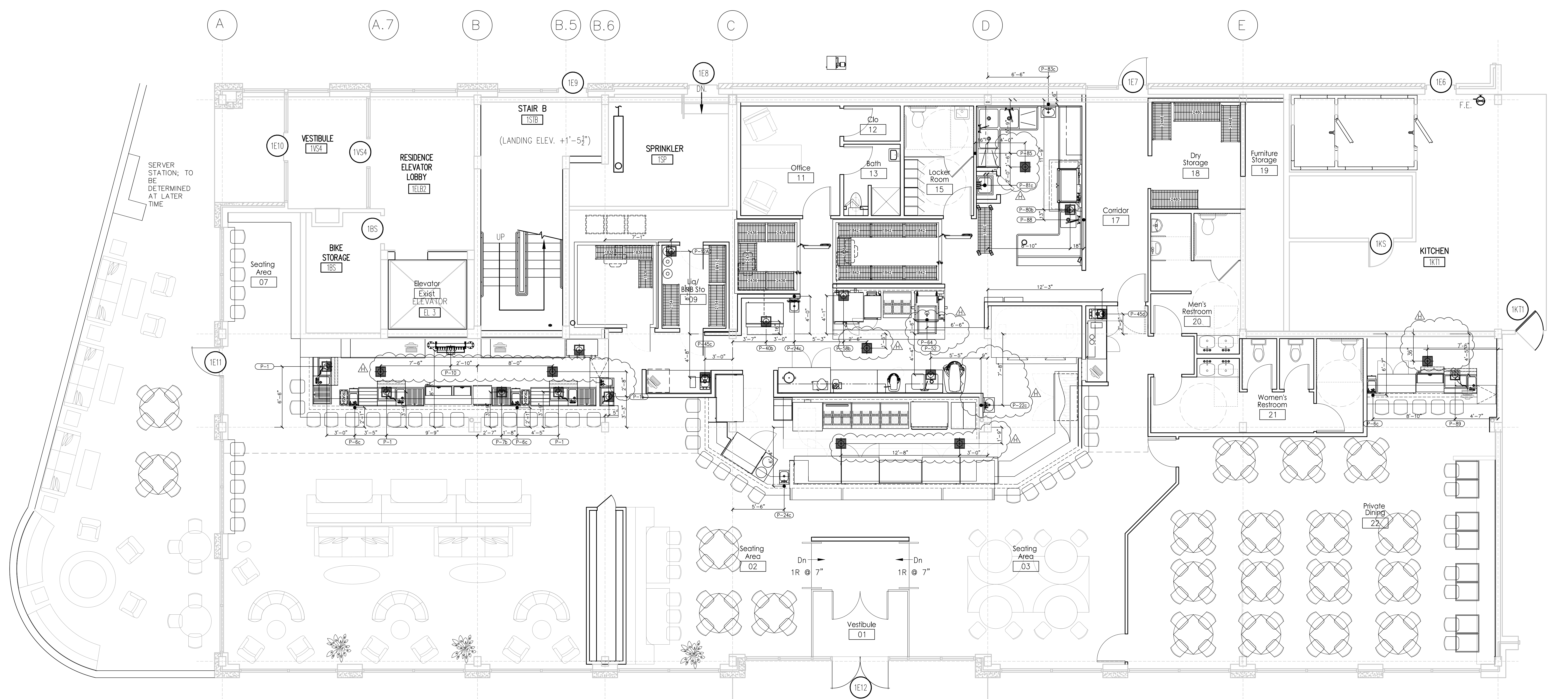
GENERAL NOTES

- A**
THESE PLANS ARE PREPARED FOR THE CONVENIENCE OF OTHERS AND ARE NOT TO BE USED IN WHOLE OR IN PART WITHOUT THE WRITTEN CONSENT OF TRIMARK UNITED EAST. THE CONTRACTOR SHALL BE RESPONSIBLE FOR VERIFYING ALL DIMENSIONS AND CONDITIONS IN THE FIELD BEFORE STARTING CONSTRUCTION AND TO NOTIFY TRIMARK UNITED EAST OF ANY MATERIAL OR DETAIL CHANGES.
- B**
TRIMARK UNITED EAST IS NOT RESPONSIBLE FOR ANY UTILITY REQUIREMENTS REGARDING EXISTING EQUIPMENT TO BE REUSED. IT IS THE RESPONSIBILITY OF THE GENERAL CONTRACTOR AND ELECTRICAL, PLUMBING & HVAC CONTRACTORS TO VERIFY AND COORDINATE ALL UTILITY REQUIREMENTS WITH OWNERS TO ENSURE PROPER CONNECTIONS.
- C**
TRIMARK UNITED EAST IS NOT RESPONSIBLE FOR ANY UTILITY REQUIREMENTS REGARDING EXISTING EQUIPMENT TO BE REUSED. IT IS THE RESPONSIBILITY OF THE GENERAL CONTRACTOR AND ELECTRICAL, PLUMBING & HVAC CONTRACTORS TO VERIFY AND COORDINATE ALL UTILITY REQUIREMENTS WITH OWNERS TO ENSURE PROPER CONNECTIONS.
- D**
ALL ELECTRICAL, PLUMBING, AND MECHANICAL UTILITY REQUIREMENT INFORMATION LISTED ON THE FOODSERVICE PLANS IS SUBJECT TO CHANGE BASED UPON FINAL EQUIPMENT SELECTION. VERIFY ALL UTILITY REQUIREMENTS WITH OWNERS TO ENSURE PROPER CONNECTIONS.

FOODSERVICE EQUIPMENT PLAN
Underground Plumbing Connections

PROJECT #	14-129
QUOTE #	*****
DRAWN BY	CMB
CHECKED BY	-
CONTRACT REP.	JRD
DRAWING SCALE	1/4"=1'-0"
SHEET NUMBER	

K.402



PLUMBING CONNECTION SCHEDULE

- P-1 FLOOR SINK, HALF-GRATE, 1/2" INDIRECT WASTE FROM ITEM 1, COCKTAIL STATION; ALSO SERVES ITEMS 2 & 3 (3 LOCATIONS).
- P-1b FLOOR SINK, HALF-GRATE, 1/2" INDIRECT WASTE FROM ITEM 1, COCKTAIL STATION; ALSO SERVES ITEM 13.
- P-2 1/2" COLD WATER, STUB OUT WALL AT 14"-AFF AND CONNECT AT ITEM 2, DUMP SINK (4 LOCATIONS).
- P-2b 1/2" HOT WATER, STUB OUT WALL AT 14"-AFF AND CONNECT AT ITEM 2, DUMP SINK (4 LOCATIONS).
- P-6 1/2" COLD WATER, STUB OUT WALL AT 14"-AFF AND CONNECT AT ITEM 6, HAND SINK (3 LOCATIONS).
- P-6b 1/2" HOT WATER, STUB OUT WALL AT 14"-AFF AND CONNECT AT ITEM 6, HAND SINK (3 LOCATIONS).
- P-7 1/2" COLD WATER, STUB OUT WALL AT 14"-AFF AND CONNECT AT ITEM 7, GLASSWASHER, 5/8" DIRECT WASTE.
- P-7b 1/2" HOT WATER, STUB OUT WALL AT 14"-AFF AND CONNECT AT ITEM 7, GLASSWASHER, 5/8" DIRECT WASTE.
- P-7b FLOOR SINK, HALF-GRATE, SERVES ITEM 20.
- P-7b FLOOR SINK, HALF-GRATE, 1/2" INDIRECT WASTE FROM ITEM 10, DRIP TRAY.
- P-12-4 FLOOR SINK, HALF-GRATE, 3/4" INDIRECT WASTE FROM ITEM 12-A, COOLER EVAPORATOR.
- P-13 1/2" COLD WATER, STUB OUT WALL AT 14"-AFF AND CONNECT AT ITEM 13, DUMP SINK.
- P-13b 1/2" HOT WATER, STUB OUT WALL AT 14"-AFF AND CONNECT AT ITEM 13, DUMP SINK.
- P-17 DELETE
- P-17-4 COLD WATER, STUB OUT WALL AT 18"-AFF, CONNECT AT WATER FILTER ASSEMBLY AND INTERPIPE TO ITEM 17-A, HOT WATER DISPENSER (2 LOCATIONS).
- P-18 3/8" COLD WATER, STUB OUT WALL AT 18"-AFF, CONNECT AT WATER SOFTENER AND INTERPIPE TO ITEM 18, ESPRESSO MACHINE.
- P-18 FLOOR SINK, HALF-GRATE, 1/2" INDIRECT WASTE FROM ITEM 18, ESPRESSO MACHINE.
- P-22 1/2" COLD WATER, STUB OUT WALL AT 26"-AFF AND CONNECT AT ITEM 22, HAND SINK.
- P-22b 1/2" HOT WATER, STUB OUT WALL AT 26"-AFF AND CONNECT AT ITEM 22, HAND SINK.
- P-24 1-1/2" DIRECT WASTE, STUB OUT WALL AT 24"-AFF AND CONNECT AT ITEM 22, HAND SINK.
- P-24 1/2" COLD WATER, STUB OUT WALL AT 26"-AFF AND CONNECT AT ITEM 24, HAND SINK (2 LOCATIONS).
- P-24b 1/2" HOT WATER, STUB OUT WALL AT 26"-AFF AND CONNECT AT ITEM 24, HAND SINK (2 LOCATIONS).
- P-24c 1-1/2" DIRECT WASTE, STUB OUT WALL AT 24"-AFF AND CONNECT AT ITEM 24, HAND SINK (2 LOCATIONS).
- P-34 3/4" GAS SUPPLY, 44-MBTUH, STUB OUT WALL AT 16"-AFF AND CONNECT AT ITEM 34, CONVECTION OVEN. P.C. TO MAKE FINAL CONNECTION THRU GAS DISCONNECT KIT SUPPLIED BY TRIMARK.
- P-36 3/4" GAS SUPPLY, 215-MBTUH, STUB OUT WALL AT 16"-AFF AND CONNECT AT ITEM 36, 6-BURNER RANGE (3 LOCATIONS). P.C. TO MAKE FINAL CONNECTION THRU GAS DISCONNECT KIT SUPPLIED BY TRIMARK.
- P-36b 3/4" GAS SUPPLY, 265-MBTUH, STUB OUT WALL AT 16"-AFF AND CONNECT AT ITEM 36, 6-BURNER RANGE W/ SALAMANDER. P.C. TO MAKE FINAL CONNECTION THRU GAS DISCONNECT KIT SUPPLIED BY TRIMARK.
- P-37 3/4" GAS SUPPLY, 200-MBTUH, STUB OUT WALL AT 16"-AFF AND CONNECT AT ITEM 37, CHARBROILER. P.C. TO MAKE FINAL CONNECTION THRU GAS DISCONNECT KIT SUPPLIED BY TRIMARK.
- P-38 3/4" GAS SUPPLY, 110-MBTUH, STUB OUT WALL AT 16"-AFF AND CONNECT AT ITEM 38, FRYER (2 LOCATIONS). P.C. TO MAKE FINAL CONNECTION THRU GAS DISCONNECT KIT SUPPLIED BY TRIMARK.
- P-40 3/4" COLD WATER, STUB OUT WALL AT 7"-0"-AFF AND CONNECT AT ITEM 40, WATER FILTER ASSEMBLY (2 LOCATIONS).
- P-40c PIPE COLD WATER FROM FILTER TO ICE MAKING INLET ON ICE MAKER.
- P-40 FLOOR SINK, HALF-GRATE, 2 1/2" 1/4" & 1" INDIRECT WASTES FROM ITEMS 40, ICE MAKERS W/ BIN; ALSO SERVES ITEM 68-A.
- P-45 1/2" COLD WATER, STUB OUT WALL AT 16"-AFF AND CONNECT AT ITEM 45, DROP-IN SINK (2 LOCATIONS).
- P-45b 1/2" HOT WATER, STUB OUT WALL AT 16"-AFF AND CONNECT AT ITEM 45, DROP-IN SINK (2 LOCATIONS).
- P-45 FLOOR SINK, HALF-GRATE, 1-1/2" INDIRECT WASTE FROM ITEM 45, DROP-IN SINK; ALSO SERVES ITEM 17 (2 LOCATIONS).
- P-45b 1" GAS SUPPLY, 250-MBTUH, STUB OUT WALL AT 16"-AFF AND CONNECT AT ITEM 49, PIZZA OVEN. P.C. TO MAKE FINAL CONNECTION THRU GAS DISCONNECT KIT SUPPLIED BY TRIMARK.
- P-52 FLOOR SINK, HALF-GRATE, (2) 1/2" INDIRECT WASTES FROM ITEM 52, WORKTABLE W/ SINKS.
- P-52-4 1/2" COLD WATER, STUB OUT WALL AT 14"-AFF AND CONNECT AT ITEM 52-A, DECK MOUNT FAUCET.
- P-52-4b 1/2" HOT WATER, STUB OUT WALL AT 14"-AFF AND CONNECT AT ITEM 52-A, DECK MOUNT FAUCET.
- P-57 1/2" COLD WATER, STUB OUT WALL AT 48"-AFF AND CONNECT AT ITEM 57, 10 QT. KETTLE.
- P-58 3/4" GAS SUPPLY, 60-MBTUH, STUB OUT WALL AT 16"-AFF AND CONNECT AT ITEM 55, CONVECTION OVEN. P.C. TO MAKE FINAL CONNECTION THRU GAS DISCONNECT KIT SUPPLIED BY TRIMARK.
- P-58 FLOOR SINK, HALF-GRATE, 1" INDIRECT WASTE FROM ITEM 58, CONVECTION OVEN; ALSO SERVES ITEM 69-A.
- P-58c 1/2" COLD WATER, STUB OUT WALL AT 16"-AFF AND CONNECT AT ITEM 58, CONVECTION OVEN.
- P-64 4" DIRECT WASTE, STUB -7"-BFF AND CONNECT AT ITEM 64, FLOOR TROUGH.
- P-65 3/4" COLD WATER, STUB OUT WALL AT 16"-AFF AND CONNECT AT ITEM 65, STEAMER.
- P-67 1/2" GAS SUPPLY, 104-MBTUH, STUB OUT WALL AT 16"-AFF AND CONNECT AT ITEM 67, BRAISING PAN. P.C. TO MAKE FINAL CONNECTION THRU GAS DISCONNECT KIT SUPPLIED BY TRIMARK.
- P-67b 1/2" COLD WATER, STUB OUT WALL AT 16"-AFF AND CONNECT AT ITEM 67, BRAISING PAN.
- P-67c 1/2" HOT WATER, STUB OUT WALL AT 16"-AFF AND CONNECT AT ITEM 67, BRAISING PAN.
- P-67d 1/2" HOT WATER, STUB OUT WALL AT 16"-AFF AND CONNECT AT ITEM 67, BRAISING PAN.
- P-80 3/4" HOT WATER AT 110°F MINIMUM, STUB OUT WALL AT 7"-0"-AFF AND CONNECT AT ITEM 80, DISHWASHER, 1-1/2" DIRECT WASTE.
- P-80 FLOOR SINK, HALF-GRATE.
- P-81 1/2" COLD WATER, STUB OUT WALL AT 36"-AFF AND CONNECT AT ITEM 81, MOP SINK FAUCET.
- P-81b 1/2" HOT WATER, STUB OUT WALL AT 36"-AFF AND CONNECT AT ITEM 81, MOP SINK FAUCET.
- P-81c 2" DIRECT WASTE, STUB UP 2"-AFF AND CONNECT AT ITEM 81, MOP SINK.
- P-83 1/2" COLD WATER, STUB OUT WALL AT 26"-AFF AND CONNECT AT ITEM 83, HAND SINK (2 LOCATIONS).
- P-83b 1/2" HOT WATER, STUB OUT WALL AT 26"-AFF AND CONNECT AT ITEM 83, HAND SINK (2 LOCATIONS).
- P-83c 1-1/2" DIRECT WASTE, STUB OUT WALL AT 24"-AFF AND CONNECT AT ITEM 83, HAND SINK (2 LOCATIONS).
- P-85 3/2" WASTES FROM ITEM 85, THREE COMPARTMENT SINK. P.C. TO MANIFOLD CONNECTIONS AND PIPE PER LOCAL CODE.
- P-85-4 1/2" COLD WATER, STUB OUT WALL AT 14"-AFF AND CONNECT AT ITEM 85-A, SPLASH MOUNT FAUCET.
- P-85-4b 1/2" HOT WATER, STUB OUT WALL AT 14"-AFF AND CONNECT AT ITEM 85-A, SPLASH MOUNT FAUCET.
- P-85-4c 1/2" COLD WATER, STUB OUT WALL AT 14"-AFF AND CONNECT AT ITEM 85-B, PRE-RINSE FAUCET.
- P-85-4d 1/2" HOT WATER, STUB OUT WALL AT 14"-AFF AND CONNECT AT ITEM 85-B, PRE-RINSE FAUCET.
- P-88 1-1/2" DIRECT WASTE, STUB OUT WALL AT 12"-AFF AND CONNECT AT ITEM 88, SOILED DISHTABLE.
- P-88-4 1/2" COLD WATER, STUB OUT WALL AT 14"-AFF AND CONNECT AT ITEM 88-A, PRE-RINSE FAUCET.
- P-88-4b 1/2" HOT WATER, STUB OUT WALL AT 14"-AFF AND CONNECT AT ITEM 88-A, PRE-RINSE FAUCET.
- P-89 FLOOR SINK, HALF-GRATE, 1/2" INDIRECT WASTE FROM ITEM 89, COCKTAIL STATION; ALSO SERVES ITEM 2.

- LEGEND - PLUMBING CONNECTIONS**
- HW-HOT WATER, OR CW-COLD WATER
 - S-STEAM SUPPLY, OR C-CONDENSATE RETURN
 - GAS SUPPLY
 - WASTE, DIRECT
 - FLOOR SINK WITH HALF GRATE UNLESS NOTED OTHERWISE
 - FLOOR DRAIN
 - FLOOR DRAIN W/ ATTACHED FUNNEL
 - FIELD CONNECTIONS

SERVER STATION; TO BE DETERMINED AT LATER TIME

Seating Area 07

Seating Area 02

Seating Area 03

Vestibule 01

Vestibule 10

Seating Area 02

Seating Area 03

Seating Area 07

Seating Area 02

Seating Area 03

Seating Area 07

Seating Area 02

Seating Area 03

Seating Area 07