

These drawings are the sole property of TriMark United East and are not to be used in whole or in part without the expressed written consent of TriMark United East.

Owner and all Contractors to check and verify existing dimension and conditions in the field before starting construction and to notify TriMark United East of any omissions or actual changes.

TIQA
Commercial Street
Portland, MA 04101

ISSUES

ISSUE	DATE	DESCRIPTION OF ISSUE	BY
A	8/5/14	MECHANICAL CONNECTIONS	JMB
B	8/5/14	OWNER PER. S&P PROPOSAL	JMB
C	9/1/14	SERIES ELEVATION CHANGES	JMB
D	9/1/14	SEATING SERVICE	JMB
E	9/25/14	EQUIPMENT CHANGES	JMB
F	10/7/14	UNDERGROUND PIPING	JMB
G	10/27/14	EQUIPMENT REVISIONS	JMB
H	10/27/14	SEEN. USE P.L.R. IRVING/10/27/14	JMB
I	10/27/14	PRINT. PER. S&P COMMENTS	JMB
K	11/5/14	REVISIONS TO PRIVATE DINING ROOM	JMB

APPROVAL

APPROVED AS SUBMITTED
 APPROVED AS NOTED
 NOT APPROVED/RESUBMIT

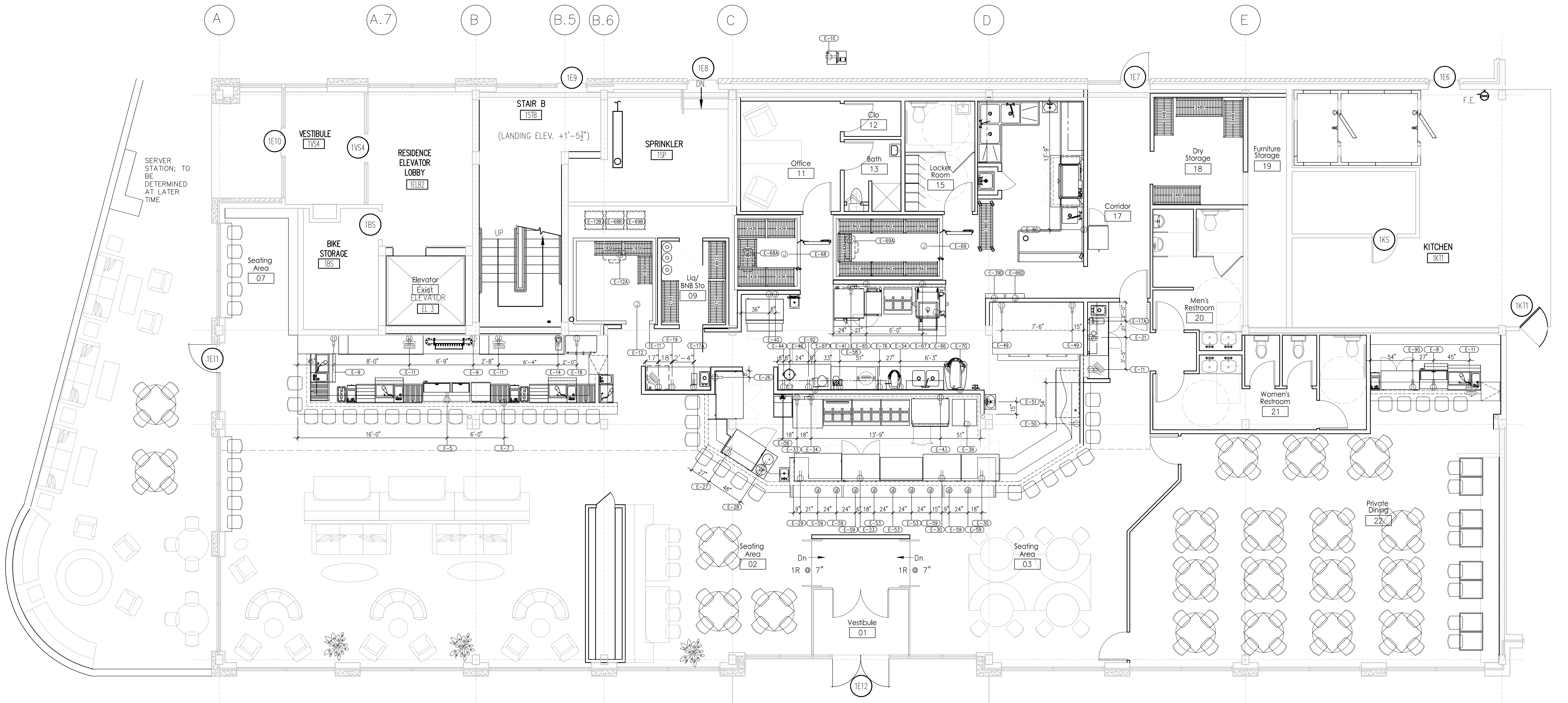
REVISED BY: _____ DATE: _____

GENERAL NOTES

- A**
THESE PLANS ARE PREPARED FOR THE CONVENIENCE OF OTHERS AND ARE NOT TO BE USED AS A BASIS FOR CONSTRUCTION FOR FOODSERVICE EQUIPMENT. THEY ARE AS ACCURATE AS CAN BE DETERMINED AT THE DATE, AND DIMENSIONS MAY VARY BETWEEN DIMENSIONS SHOWN, FINISHED DIMENSIONS, AND UTILITY CONNECTIONS AND INFORMATION.
- B**
TRIMARK UNITED EAST IS NOT RESPONSIBLE FOR ANY UTILITY REQUIREMENTS REGARDING EXISTING EQUIPMENT TO BE REUSED. IT IS THE RESPONSIBILITY OF THE GENERAL CONTRACTOR AND ELECTRICAL PLUMBER & HVAC CONTRACTORS TO VERIFY ALL PLUMBING & HVAC REQUIREMENTS WITH OWNER TO ENSURE PROPER CONNECTIONS.
- C**
TRIMARK UNITED EAST IS NOT RESPONSIBLE FOR ANY UTILITY REQUIREMENTS REGARDING EXISTING EQUIPMENT TO BE REUSED. IT IS THE RESPONSIBILITY OF THE GENERAL CONTRACTOR AND ELECTRICAL PLUMBER & HVAC CONTRACTORS TO VERIFY ALL PLUMBING & HVAC REQUIREMENTS WITH OWNER TO ENSURE PROPER CONNECTIONS.
- D**
ALL ELECTRICAL, PLUMBING, AND MECHANICAL UTILITY REQUIREMENTS SHALL BE LISTED ON THE FOODSERVICE PLAN. IS SUBJECT TO CHANGE, BASED UPON FINAL EQUIPMENT PROPOSAL, SELECTED BY THE OWNER AND HIS CONTRACTOR.

FOODSERVICE EQUIPMENT PLAN
Electrical Connections

PROJECT #	14-129
QUOTE #	*****
DRAWN BY	CMB
CHECKED BY	-
CONTRACT REP.	JRD
DRAWING SCALE	1/4"=1'-0"
SHEET NUMBER	K.301



ELECTRICAL CONNECTION SCHEDULE

- E-5 115-V, 1-PH SERVICE, 1/3-HP, 7 FL AMPS, NEMA 5-15P, ELECTRIC OUTLET AT 12"-AFF FOR SERVICE TO ITEM 5, BOTTLE COOLER.
- E-7 208-240-V, 1-PH SERVICE, 1-HP, 11-KW, 45 FL AMPS, STUB OUT WALL AT 12"-AFF AND CONNECT AT ITEM 7, GLASSWASHER.
- E-8 115-V, 1-PH SERVICE, 1/5-HP, 3 FL AMPS, NEMA 5-15P, ELECTRIC OUTLET AT 12"-AFF FOR SERVICE TO ITEM 8, BOTTLE COOLER.
- E-9 120-V, 1-PH SERVICE, 1/3-HP, 6.3 FL AMPS, NEMA 5-15P, ELECTRIC OUTLET AT 12"-AFF FOR SERVICE TO ITEM 9, BACKBAR COOLER (2 LOCATIONS).
- E-10 120-V, 1-PH SERVICE, ELECTRIC OUTLET FOR SERVICE TO ITEM 10, BEER POWER PACK (VERIFY LOCATION).
- E-11 120-V, 1-PH SERVICE, ELECTRIC OUTLET FOR SERVICE TO ITEM 11, POS STATION (5 LOCATIONS) (VERIFY LOCATION).
- E-12 120-V, 1-PH SERVICE, 5 FL AMPS, DROP FROM ABOVE AND CONNECT AT ITEM 12, WALK-IN BEER COOLER.
- E-14 SEE MANUFACTURER'S DRAWINGS FOR PRECISE ELECTRICAL REQUIREMENTS AT ITEM 12-A, COOLER EVAPORATOR.
- E-12-B SEE MANUFACTURER'S DRAWINGS FOR PRECISE ELECTRICAL REQUIREMENTS AT ITEM 12-B, COOLER CONDENSING UNIT.
- E-14 120-V, 1-PH SERVICE, 3 FL AMPS, STUB OUT WALL AT 48"-AFF FOR SERVICE TO ITEM 14, COFFEE GRINDER.
- E-17 DELETE
- E-17A 120-V, 1-PH SERVICE, 1.5-KW, 12.5 FL AMPS, NEMA 5-15P, ELECTRIC OUTLET AT 48"-AFF FOR SERVICE TO ITEM 17-A, HOT WATER DISPENSER (2 LOCATIONS).
- E-18 220-V, 1-PH SERVICE, 23.0 FL AMPS, NEMA 16-30P, ELECTRIC OUTLET AT 48"-AFF FOR SERVICE TO ITEM 18, ESPRESSO MACHINE.
- E-19 115-V, 1-PH SERVICE, 1/6-HP, 3.9 FL AMPS, NEMA 5-15P, ELECTRIC OUTLET AT 12"-AFF FOR SERVICE TO ITEM 19, UNDERCOUNTER REFRIGERATOR.
- E-21 115-V, 1-PH SERVICE, 1/5-HP, 4 FL AMPS, NEMA 5-15P, ELECTRIC OUTLET AT 12"-AFF FOR SERVICE TO ITEM 21, UNDERCOUNTER REFRIGERATOR.
- E-23 115-V, 1-PH SERVICE, 1/3-HP, 8.6 FL AMPS, NEMA 5-15P, ELECTRIC OUTLET AT 12"-AFF FOR SERVICE TO ITEM 23, REFRIGERATED SANDWICH PREP.
- E-25 DELETE
- E-26 115-V, 1-PH SERVICE, 1/3-HP, 7.9 FL AMPS, NEMA 5-15P, ELECTRIC OUTLET AT 16"-AFF FOR SERVICE TO ITEM 26, REFRIGERATED PREP.
- E-27 115-V, 1-PH SERVICE, 1/3-HP, 8.6 FL AMPS, NEMA 5-15P, ELECTRIC OUTLET AT 16"-AFF FOR SERVICE TO ITEM 27, REFRIGERATED PREP.
- E-28 120-V, 1-PH SERVICE, 0.3-KW, 2.1 FL AMPS, NEMA 5-15P, ELECTRIC OUTLET AT 16"-AFF FOR SERVICE TO ITEM 28, SOUP WARMER (2 LOCATIONS).
- E-29 115-V, 1-PH SERVICE, 1/3-HP, 7.9 FL AMPS, NEMA 5-15P, ELECTRIC OUTLET AT 16"-AFF FOR SERVICE TO ITEM 29, REFRIGERATED PIZZA PREP.
- E-30 115-V, 1-PH SERVICE, 1/3-HP, 8.6 FL AMPS, NEMA 5-15P, ELECTRIC OUTLET AT 16"-AFF FOR SERVICE TO ITEM 30, REFRIGERATED PREP (2 LOCATIONS).
- E-33 208-V, 1-PH SERVICE, 3-KW, 14.5 FL AMPS, STUB OUT WALL AT 16"-AFF AND CONNECT AT ITEM 33, COOK/HOLD CABINET.
- E-34 115-V, 1-PH SERVICE, 1/2-HP, 8 FL AMPS, NEMA 5-15P, ELECTRIC OUTLET AT 16"-AFF FOR SERVICE TO ITEM 34, CONNECTION OVEN.
- E-39 120-V, 1-PH SERVICE, 5 FL AMPS, DROP FROM ABOVE AND CONNECT AT ITEM 39, EXHAUST HOOD; FOR LIGHTS.
- E-380 E.C. TO PROVIDE JUNCTION BOX AT 9'-0"-AFF FOR TIE-IN TO BUILDING ALARM SYSTEM AND FOR EQUIPMENT SHUTDOWN AT ITEM 39-D, FIRE SUPPRESSION SYSTEM.
- E-40 208-240-V, 3-PH SERVICE, 12 FL AMPS, STUB OUT WALL AT 7'-0"-AFF AND CONNECT AT ITEM 40, ICE MAKER (2 LOCATIONS).
- E-40A DELETE
- E-41 120-V, 1-PH SERVICE, 1-1/2-HP, 7.2 FL AMPS, NEMA 5-15P, ELECTRIC OUTLET AT 48"-AFF FOR SERVICE TO ITEM 41, FOOD PROCESSOR.
- E-43 115-V, 1-PH SERVICE, 1/4-HP, 6 FL AMPS, NEMA 5-15P, ELECTRIC OUTLET AT 16"-AFF FOR SERVICE TO ITEM 43, REFRIGERATED EQUIPMENT STAND.
- E-44 115-V, 1-PH SERVICE, 1/2-HP, 7 FL AMPS, NEMA 5-15P, ELECTRIC OUTLET AT 16"-AFF FOR SERVICE TO ITEM 44, WORKTOP FREEZER.
- E-46 208-V, 1-PH SERVICE, 10.8 FL AMPS, NEMA 6-15P, ELECTRIC OUTLET AT 48"-AFF FOR SERVICE TO ITEM 46, RICE COOKER.
- E-49 2)120-V, 1-PH SERVICES, 3 FL AMPS EA., NEMA 5-15P, ELECTRIC OUTLETS AT 16"-AFF FOR SERVICE TO ITEM 49, PIZZA OVEN.
- E-50 115-V, 1-PH SERVICE, 1/5-HP, 5.1 FL AMPS, NEMA 5-15P, ELECTRIC OUTLET AT 16"-AFF FOR SERVICE TO ITEM 50, UNDERCOUNTER REFRIGERATOR.
- E-51 120-V, 1-PH SERVICE, 2-KW, 16.7 FL AMPS, NEMA 5-20P, ELECTRIC OUTLET AT 48"-AFF FOR SERVICE TO ITEM 51, PROOFING CABINET.
- E-53 120-V, 1-PH SERVICE, 0.25-KW, DROP FROM ABOVE AND CONNECT AT ITEM 53, HEAT LAMP; E.C. TO INTERWIRE TO REMOTE SWITCH (3 LOCATIONS).
- E-54 115-V, 1-PH SERVICE, 1/2-HP, 6 FL AMPS, NEMA 5-15P, ELECTRIC OUTLET AT 48"-AFF FOR SERVICE TO ITEM 54, 20 QT. MIXER.
- E-56 208/240-V, 3-PH SERVICE, 4.8-KW, 12/14 FL AMPS, NEMA L14-20P, ELECTRIC OUTLET AT 48"-AFF FOR SERVICE TO ITEM 56, GYRO GRILL.
- E-57 208-V, 1-PH SERVICE, 3-KW, 15 FL AMPS, STUB OUT WALL AT 48"-AFF AND CONNECT AT ITEM 57, 10 QT. KETTLE.
- E-58 120-V, 1-PH SERVICE, 10 FL AMPS, NEMA 5-20P, ELECTRIC OUTLET AT 16"-AFF FOR SERVICE TO ITEM 58, CONNECTION OVEN.
- E-59 120-V, 1-PH SERVICE, 0.25-KW, DROP FROM ABOVE AND CONNECT AT ITEM 59, HEAT LAMP; E.C. TO INTERWIRE TO REMOTE SWITCH (6 LOCATIONS).
- E-65 208-V, 3-PH SERVICE, 14-KW, 39.2 FL AMPS, NEMA 15-50P, ELECTRIC OUTLET AT 16"-AFF FOR SERVICE TO ITEM 65, STEAMER.
- E-66 120-V, 1-PH SERVICE, 5 FL AMPS, DROP FROM ABOVE AND CONNECT AT ITEM 66, EXHAUST HOOD; FOR LIGHTS.
- E-660 E.C. TO PROVIDE JUNCTION BOX AT 9'-0"-AFF FOR TIE-IN TO BUILDING ALARM SYSTEM AND FOR EQUIPMENT SHUTDOWN AT ITEM 66-D, FIRE SUPPRESSION SYSTEM.
- E-67 115-V, 1-PH SERVICE, 5 FL AMPS, STUB OUT WALL AT 16"-AFF AND CONNECT AT ITEM 67, BRAISING PAN.
- E-68 115-V, 1-PH SERVICE, 5 FL AMPS, DROP FROM ABOVE AND CONNECT AT ITEM 68, WALK-IN PRODUCE COOLER.
- E-68-A SEE MANUFACTURER'S DRAWINGS FOR PRECISE ELECTRICAL REQUIREMENTS AT ITEM 68-A, COOLER EVAPORATOR.
- E-68-B SEE MANUFACTURER'S DRAWINGS FOR PRECISE ELECTRICAL REQUIREMENTS AT ITEM 68-B, COOLER CONDENSING UNIT.
- E-69 115-V, 1-PH SERVICE, 5 FL AMPS, DROP FROM ABOVE AND CONNECT AT ITEM 69, WALK-IN FOOD COOLER.
- E-69-A SEE MANUFACTURER'S DRAWINGS FOR PRECISE ELECTRICAL REQUIREMENTS AT ITEM 69-A, COOLER EVAPORATOR.
- E-69-B SEE MANUFACTURER'S DRAWINGS FOR PRECISE ELECTRICAL REQUIREMENTS AT ITEM 69-B, COOLER CONDENSING UNIT.
- E-70 208-V, 3-PH SERVICE, 2.7-KW, 10 FL AMPS, STUB OUT WALL AT 36"-AFF AND CONNECT AT ITEM 70, DOUGH MIXER.
- E-76 115-V, 1-PH SERVICE, 1/2-HP, 2 FL AMPS, NEMA 5-15P, ELECTRIC OUTLET AT 16"-AFF FOR SERVICE TO ITEM 76, DOUGH DIVIDER.
- E-80 480-V, 3-PH SERVICE, 2-HP, 22-KW, 58 FL AMPS, STUB OUT WALL AT 7'-0"-AFF AND CONNECT AT ITEM 80, DISHWASHER.
- E.C. TO PROVIDE INTERWIRING FROM MACHINE TO TABLE LIMIT SWITCH LOCATED ON CLEAN DISHTABLE.
- E-90 120-V, 1-PH SERVICE, 1/4-HP, 5.5 FL AMPS, NEMA 5-15P, ELECTRIC OUTLET AT 16"-AFF FOR SERVICE TO ITEM 90, BACKBAR COOLER.
- E-92 DELETE

LEGEND - ELECTRICAL CONNECTIONS

- ⊖ DUPLEX RECEPT., 20-AMP, 120-VOLT, GROUND TYPE
- ⊖ SIMPLEX RECEPT., 20-AMP, 120-VOLT, GROUND TYPE
- ⊖ SPECIAL PURPOSE OUTLET, 120-VOLT, GROUND TYPE
- ⊖ SPECIAL PURPOSE OUTLET, 208/240-VOLT AS INDICATED, GROUND TYPE
- ⊖ JUNCTION BOX
- ⊖ ELECTRICAL CONDUIT, STUB AS INDICATED FOR DIRECT CONNECTION
- ⊖ FLOOR/CEILING RECEPTACLE AS INDICATED
- ⊖ ISOLATED GROUND - FOR POS SYSTEM
- ⊖ WATERPROOF COVER AT RECEPTACLE
- ⊖ FIELD WIRING, EXPOSED RIGID
- ⊖ WATER TIGHT CONDUIT
- ⊖ FIELD WIRING, CONCEALED IN WALL, FLOOR, OR CEILING