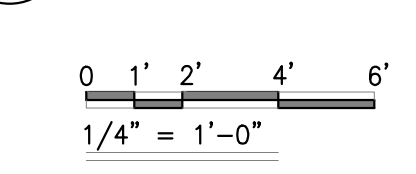
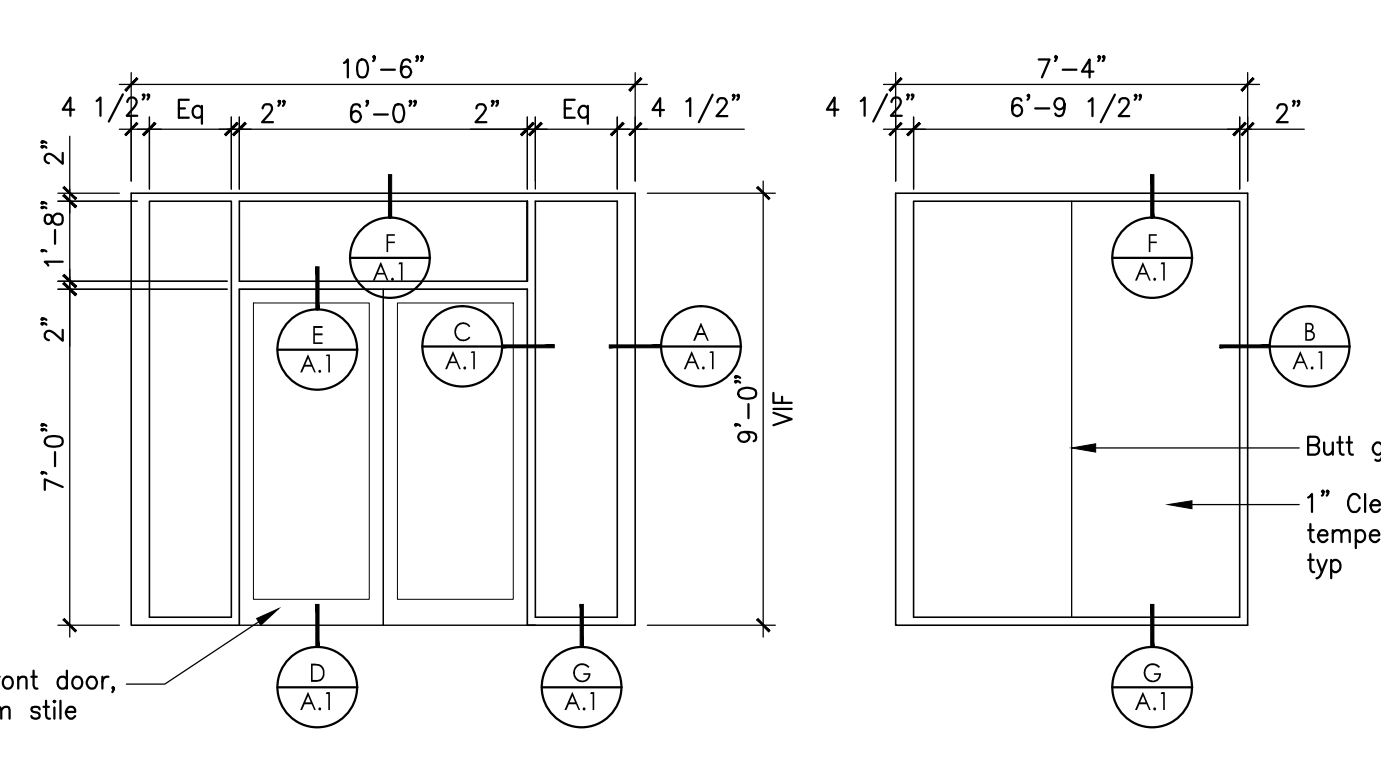
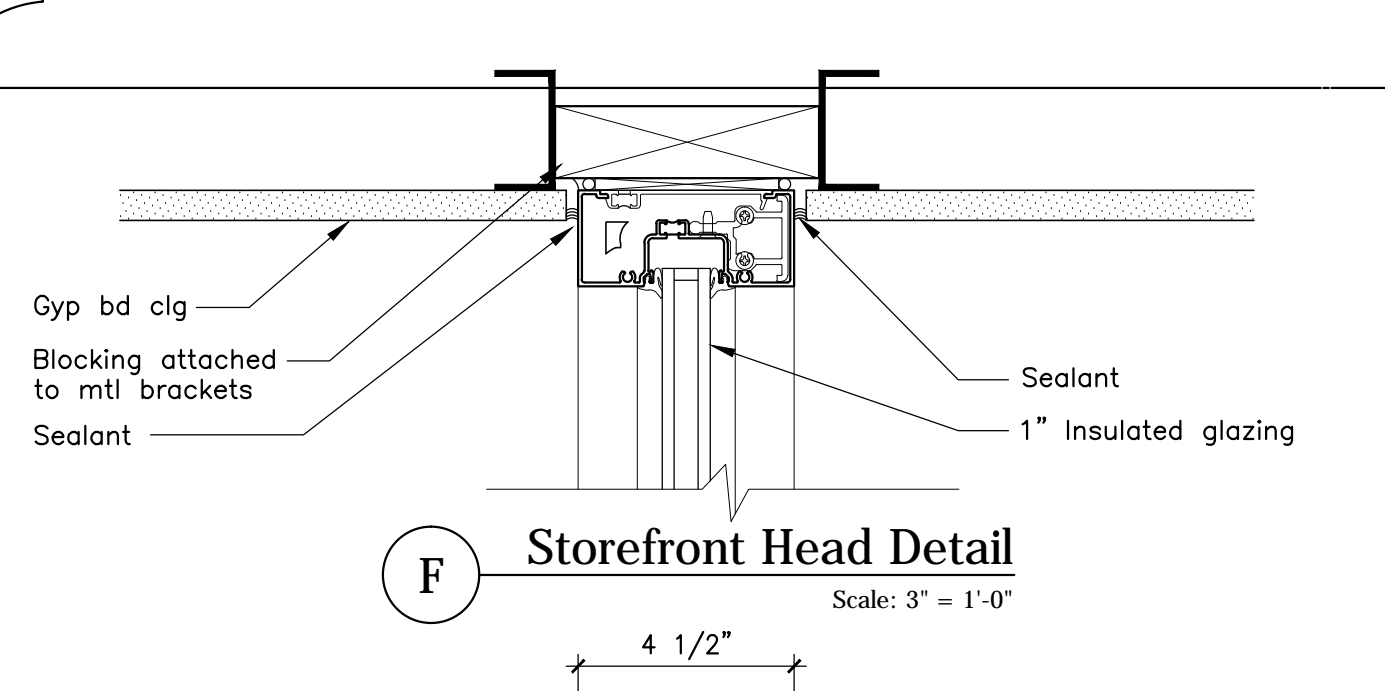


1 GROUND FLOOR FF&E PLAN
Scale: 1/4" = 1'-0"

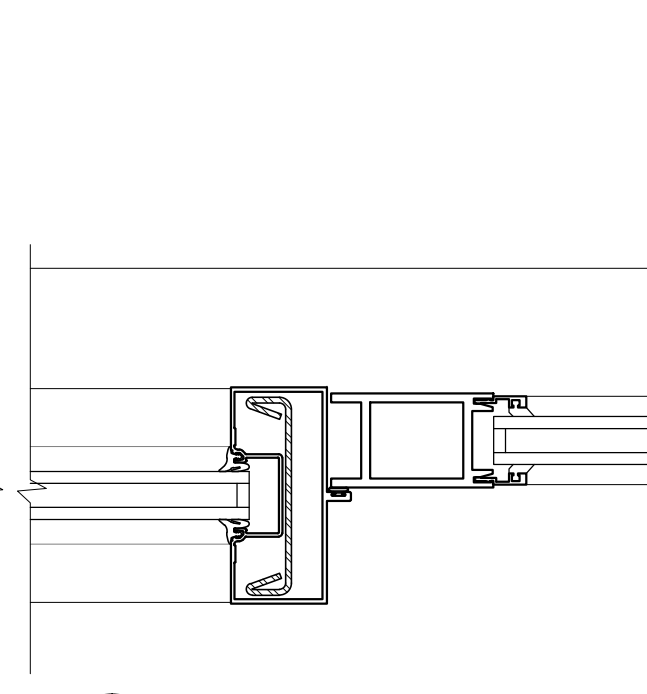
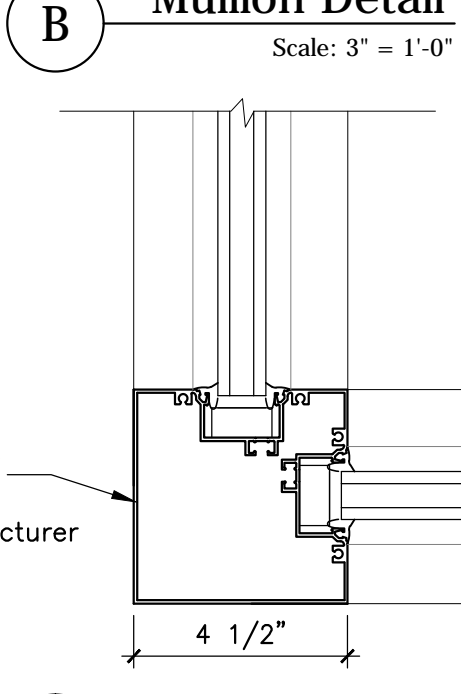
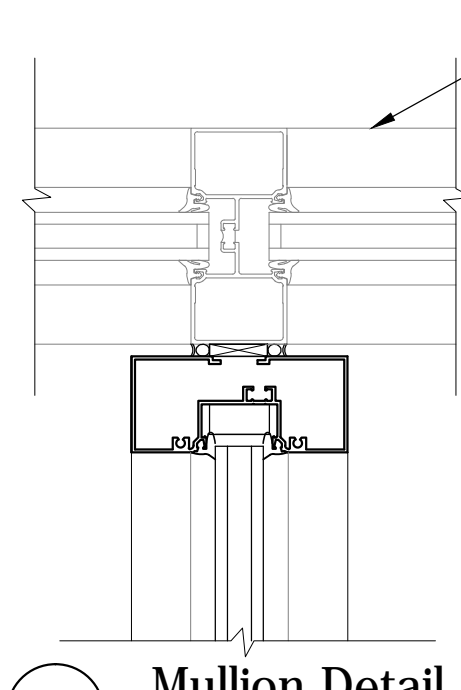
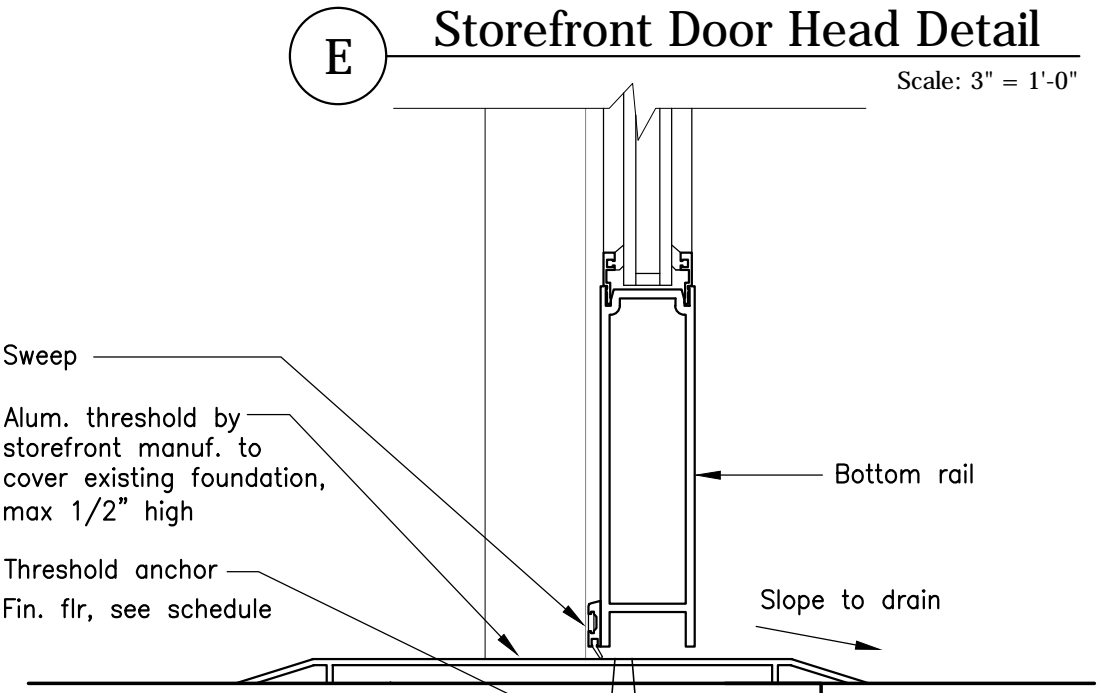
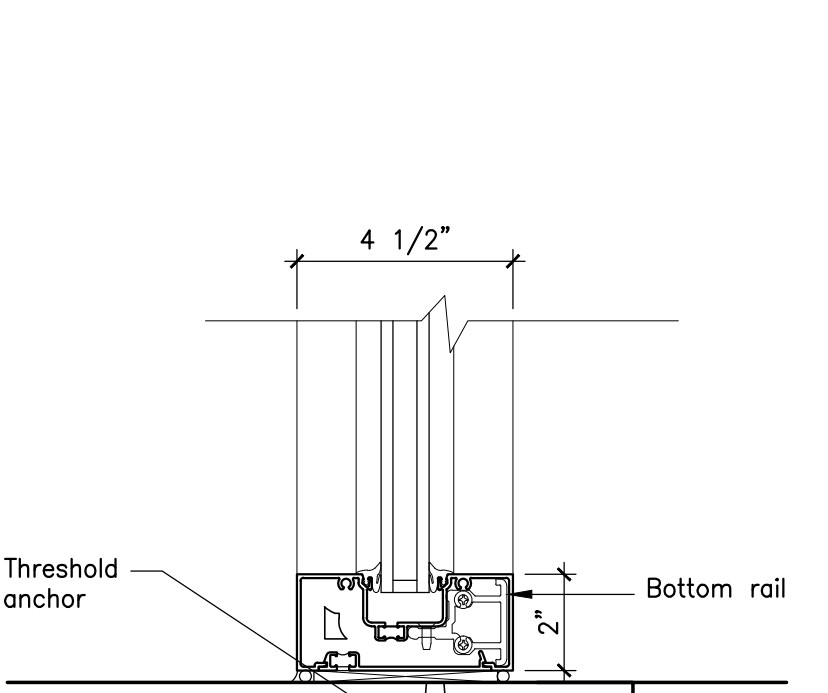
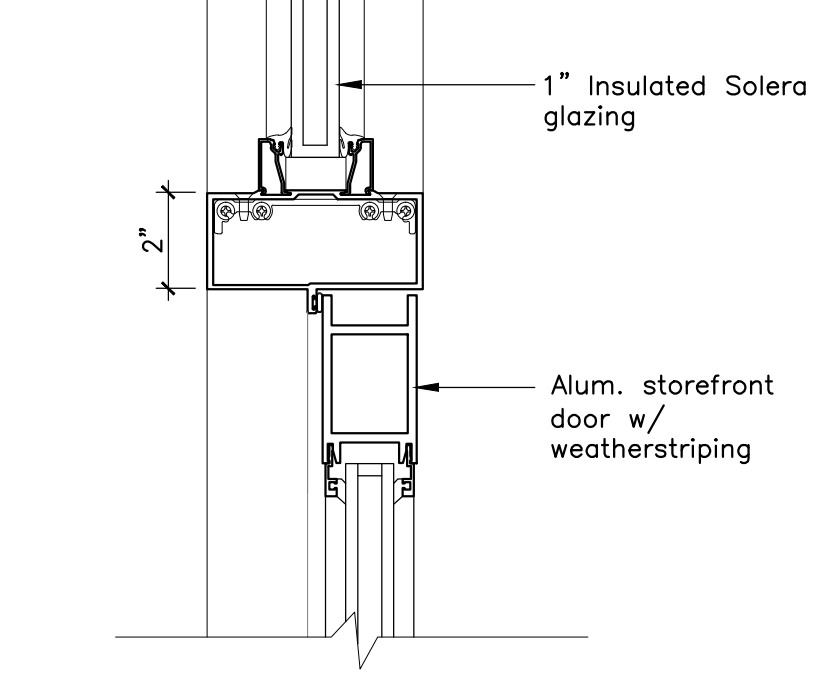


FF&E PLAN LEGEND	
• GC IS TO COORDINATE WITH KITCHEN DESIGNER ALL POWER REQUIREMENTS FOR ALL EQUIPMENT	
(C)	SYMBOL DENOTES COLUMN LINE NUMBER OR LETTER
(E)	NEW FLOOR MOUNTED DUPLEX OUTLET
(E)	NEW DUPLEX ELECTRICAL OUTLET
(E)	NEW GROUND FAULT CIRCUIT DUPLEX ELECTRICAL OUTLET
(E)	NEW SEPARATE CIRCUIT DUPLEX ELECTRICAL OUTLET
(T)	NEW TELEPHONE/DATA OUTLET
(S)	NEW PREMIER COPPER OVAL SKIRTED VESSEL HAMMERED COPPER SINK & FAUCET BY VAN DYKES RESTORERS
(U)	NEW URINAL BY AMERICAN STANDARD WASH/BROCK 1.0 GPF WASHOUT TOP SPUD URINAL WITH MANUAL FLUSH VALVE SYSTEM
(T)	NEW TOILET BY KOHLER K-4355-1-0 KINGSTON 1.28 TOILET BOWL WITH TOP SPUD AND BEDPAN LUGS OR EQUAL

NOTES:
1.) GC IS TO INSTALL (S) NEW ADJUSTABLE WOOD SHELVES ON BRACKETS ALONG ENTIRE WALL, VIF WITH INTERIOR DESIGNER DESIRED HEIGHT OF SHELVES.



- Storefront Notes**
1. Wood blocking at windows and doors to be kiln dried (KD) lumber UNO
 2. Wood blocking in contact with concrete to be pressure treated
 3. Glazing to be 1" clear insulated tempered
 4. Aluminum storefront shall be standard anodize finish
 5. Windows with a sill height less than 18" off and/or adjacent to doors shall have tempered glazing
 6. Verify all existing dimensions in field
 7. Doors shall be medium stile, butt hinges, panic bars, pull, closers, threshold and sweeps



2 Storefront Elevations
Scale: 1/4" = 1'-0"

