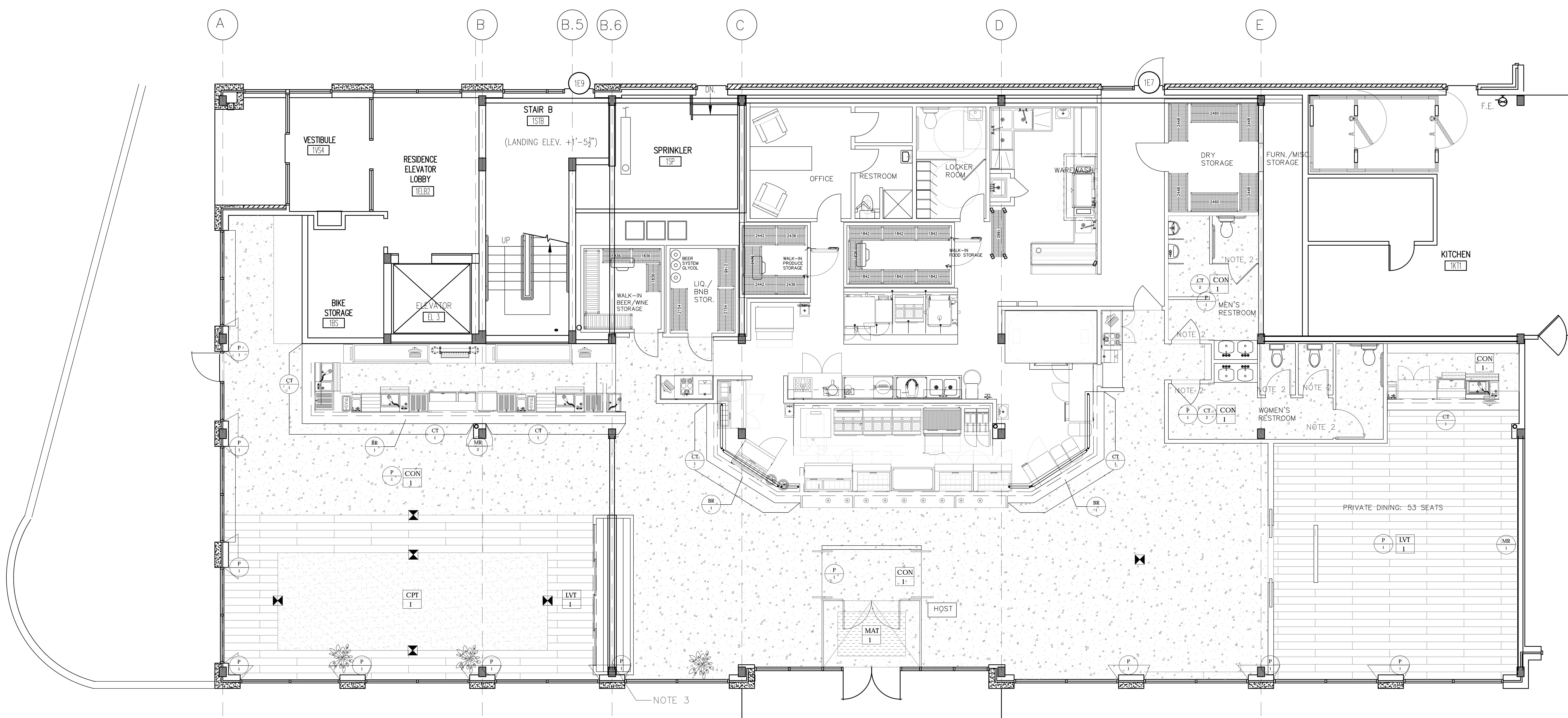
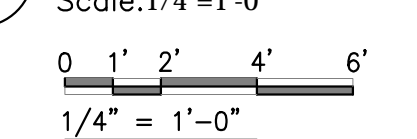


Consultants

Revisions



1 GROUND FLOOR FINISH PLAN
Scale: 1/4" = 1'-0"

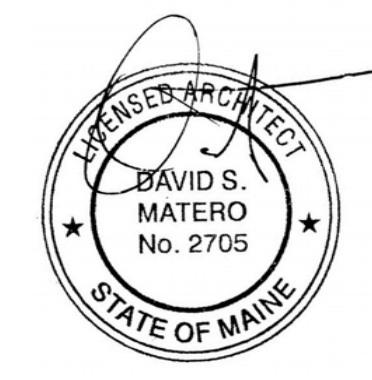


| FINISH PLAN LEGEND | |
|--------------------|--|
| | EXISTING BASE BUILDING CORE WALL, COLUMNS AND PERIMETER WALL TO REMAIN |
| | TYPE OF WALL FINISH |
| | TYPE OF FLOOR FINISH |
| | CHANGE IN MATERIALS |
| FLOORING LEGEND | |
| | NEW TINTED CONCRETE FLOOR TO RECEIVE (2) COATS OF CLEAR POLISH TO GIVE FLAT FINISH |
| | NEW CARPET TILE BY MOHAWK, BREKING FORM, HEX FUSION CONTOUR #263 |
| | NEW LUXURY VINYL TILE BY MOHAWK, HOT & HEAVY COLOR, SECOYA #142 KEY GARDENS 32x36 |
| | NEW RUBBER WALK OFF MAT WITH SCHLUTER EDGING SURROUND |

| WALL FINISH LEGEND | |
|---------------------|--|
| | NEW PAINT BY BENJAMIN MOORE OR EQUAL, COLOR TBD |
| | A. PRIMER: PRIMER ECO SPEC. LATEX PRIMER #231 BY BENJAMIN MOORE OR EQUAL |
| | B. FIRST AND SECOND FINISH COAT: TBD |
| | C. STUCCO WALL APPLICATION TBD |
| | NEW HEXAGON 1 1/2" WHITE VENETIAN MARBLE HONED MOSAIC WALL TILE AT FRONT OF BAR FROM A.F.F. # 2' x 2' A.F.F. |
| | NEW WALL TILE BY TRELAMERCIA, VERSATILE REFLECTIVE POOL UNIQUE, VS-416MC FROM FINISH FLOOR TO 60" A.F.F. |
| | NEW MIRROR BAND BY IBA, HONIFOSS MIRROR |
| | NEW NEW FULL HEIGHT MIRROR ON COLUMN |
| BASE MOLDING LEGEND | |
| | NEW 6" HIGH ASH WOOD BASE MOLDING THROUGHOUT IN NATURAL FINISH. CONTRACTOR CTO PROVIDE SPEC FOR APPROVAL. |

| MILLWORK LEGEND | |
|--|---|
| | NEW BRASS INSET BAR TOP ON (2) LAYERS OF 3/4" PLYWOOD |
| | NEW 3" CONCRETE VANITY TOP |
| NOTES: | |
| 1) PAINT ALL WALLS, COLUMNS AND DOORS WITH P.1, UNLESS OTHERWISE NOTED | |
| 2) ALL BATHROOM DOORS TO BE WOOD WITH A NATURAL WALNUT STAIN | |
| 3) WINE RACK & "VINTAGE VIEW" FLOOR TO CHIBING RACK, SERIES: TRS | |
| 4) MIRROR BEHIND BAR IN BEHVE SHISE TO BE ANTIQUE #10 | |

TIQA
311 Commercial Street
Portland, Maine



Job Number: 14.000
Date: 09.30.14
Scale: 1/4" = 1'-0"

Drawing Title:

Finish Plan

A.3
Issued for
Permit