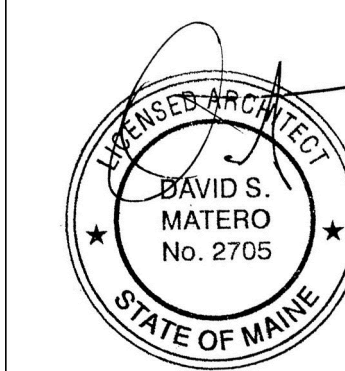


Consultants

Revisions

TIQA
311 Commercial Street
Portland, Maine

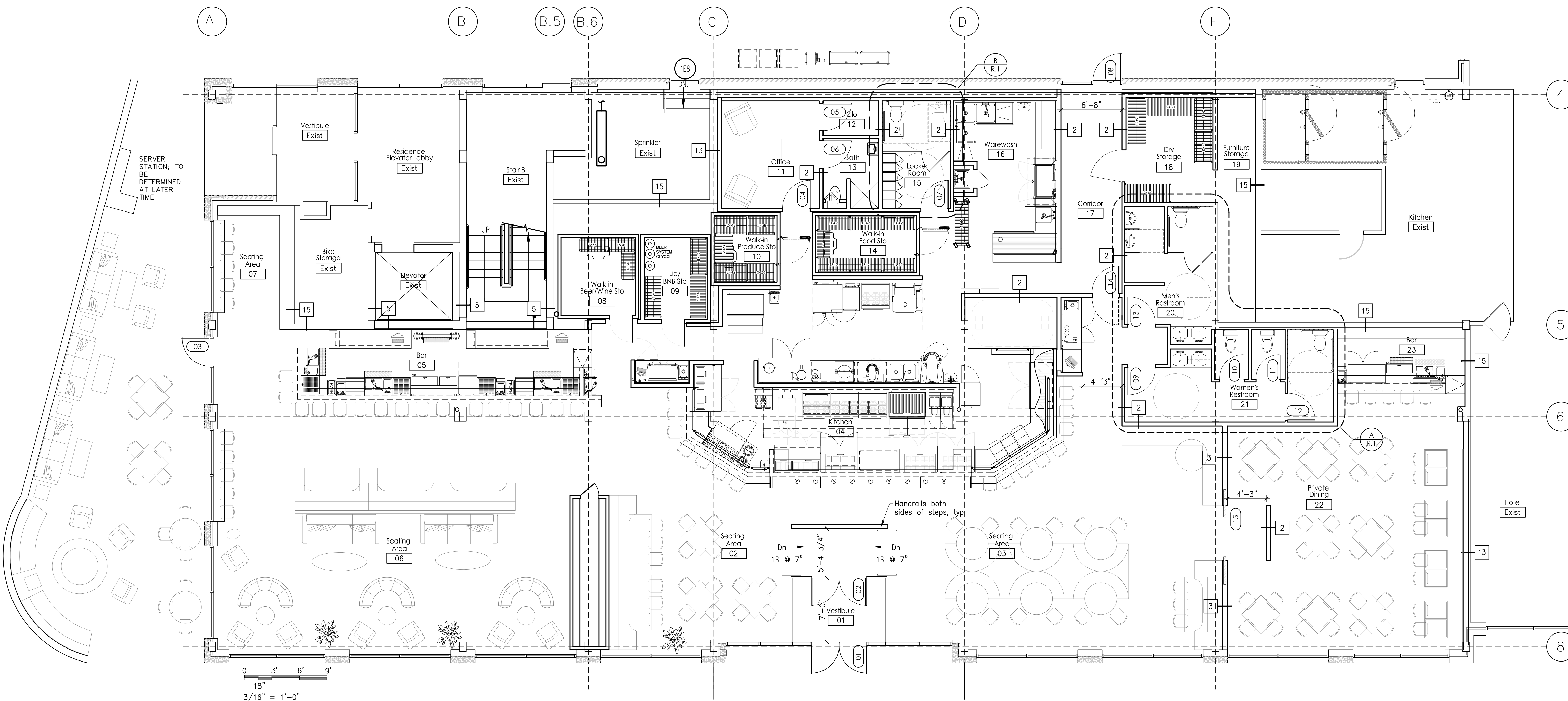


Job Number: 14.000
Date: 09.30.14
Scale: 3/16" = 1'-0"

Drawing Title:

First Floor Plan
and Door
Schedule

A.0
Issued for
Permit



1 First Floor Plan
Scale: 3/16"

Abbreviations

Al	Aluminum
Clsr	Closer
Ex	Existing
MHO	Magnetic Hold Open
HM	Hollow Metal
Hrdware	Hardware
Insul	Insulated
Ob	Obscure Glass, Tempered
Pnt	Paint
Pre	Prefinished
Thick	Thickness
Wstrp	Weatherstripping
Wd	Wood

- Door and Frame Notes**
- All doors shall be located 3" off adjacent wall except where noted or dimensioned
 - All door thickness to be 1 3/4" unless noted otherwise
 - Provide minimum of 20 ga. double studs (or double wood stud) at all door jambs.
 - All floor material transitions shall occur under door in closed position
 - All door hardware shall meet ADA. Handles, pulls and latches shall be lever style. When sliding doors are fully opened (if specified), operating hardware shall be exposed and usable from both sides.
 - All emergency egress doors in assembly rooms shall swing in the direction of travel and shall have panic hardware
 - Horizontal sliding door shall be power operated and capable of being operated manually in the event of a power failure. Door shall be operable by a simple method from both sides without special knowledge or effort. The force required to operate the door shall not exceed 30 lbs to set the door in motion and 15 lbs to close or open it to the minimum required width. The door shall be operable with a force not to exceed 15 lbs when a force of 250 lbs is applied perpendicular to the door adjacent to the operating device. The door assembly shall have an integrated standby power supply. The door assembly power supply shall be electrically supervised. The door shall open to the minimum required width within 10 seconds after activation of the operating device.

DOOR SCHEDULE

Door No.	Width	Height	Thick.	Material	Type	Finish	Insul	Frame					Miscellaneous	Remarks
								Material	Rating	Glazing	Clsr	MHO		
01	(2) 3'-0"	7'-0"	VIF	Alum			Yes	VIF	-	Insul	Yes	-	Yes	Existing door to remain, GC to confirm panic hardware.
02	(2) 3'-0"	7'-0"	1 3/4"	Alum	Pre	-	-	Alum	-	Tempered	Yes	-	Yes	Provide panic hardware
03	3'-0"	7'-0"	1 3/4"	Alum	Pre	Yes	Alum	-	Insul	Yes	-	Yes	Provide panic hardware	
04	3'-0"	7'-0"	1 3/4"	Wd	Pre	-	HM	-	-	-	-	-	-	
05	3'-0"	7'-0"	1 3/4"	Wd	Pre	-	HM	-	-	-	-	-	-	
06	3'-0"	7'-0"	1 3/4"	Wd	Pre	-	HM	-	-	-	-	-	-	
07	3'-0"	7'-0"	1 3/4"	Wd	Pre	-	HM	-	-	-	-	-	-	
08	3'-0"	7'-0"	VIF	VIF			Yes	VIF	-	-	Yes	-	Yes	Existing door to remain, GC to confirm panic hardware
09	3'-0"	7'-0"	1 3/4"	Wd	Pre	-	HM	-	-	Yes	-	-	-	
10	2'-8"	7'-0"	1 3/4"	Wd	Pre	-	-	-	-	-	-	-	-	Toilet stall door
11	2'-8"	7'-0"	1 3/4"	Wd	Pre	-	-	-	-	-	-	-	-	Toilet stall door
12	3'-0"	7'-0"	1 3/4"	Wd	Pre	-	-	-	-	-	-	-	-	Toilet stall door (ADA hardware)
13	3'-0"	7'-0"	1 3/4"	Wd	Pre	-	HM	-	-	-	Yes	-	-	
14	3'-0"	7'-0"	1 3/4"	-			-	HM	-	-	-	-	-	Double acting swinging hardware
15	(2) 3'-0"	7'-0"	1 3/4"	Wd	Pre	-	HM	-	-	-	-	-	-	Refer to Door and Frame Note #7