

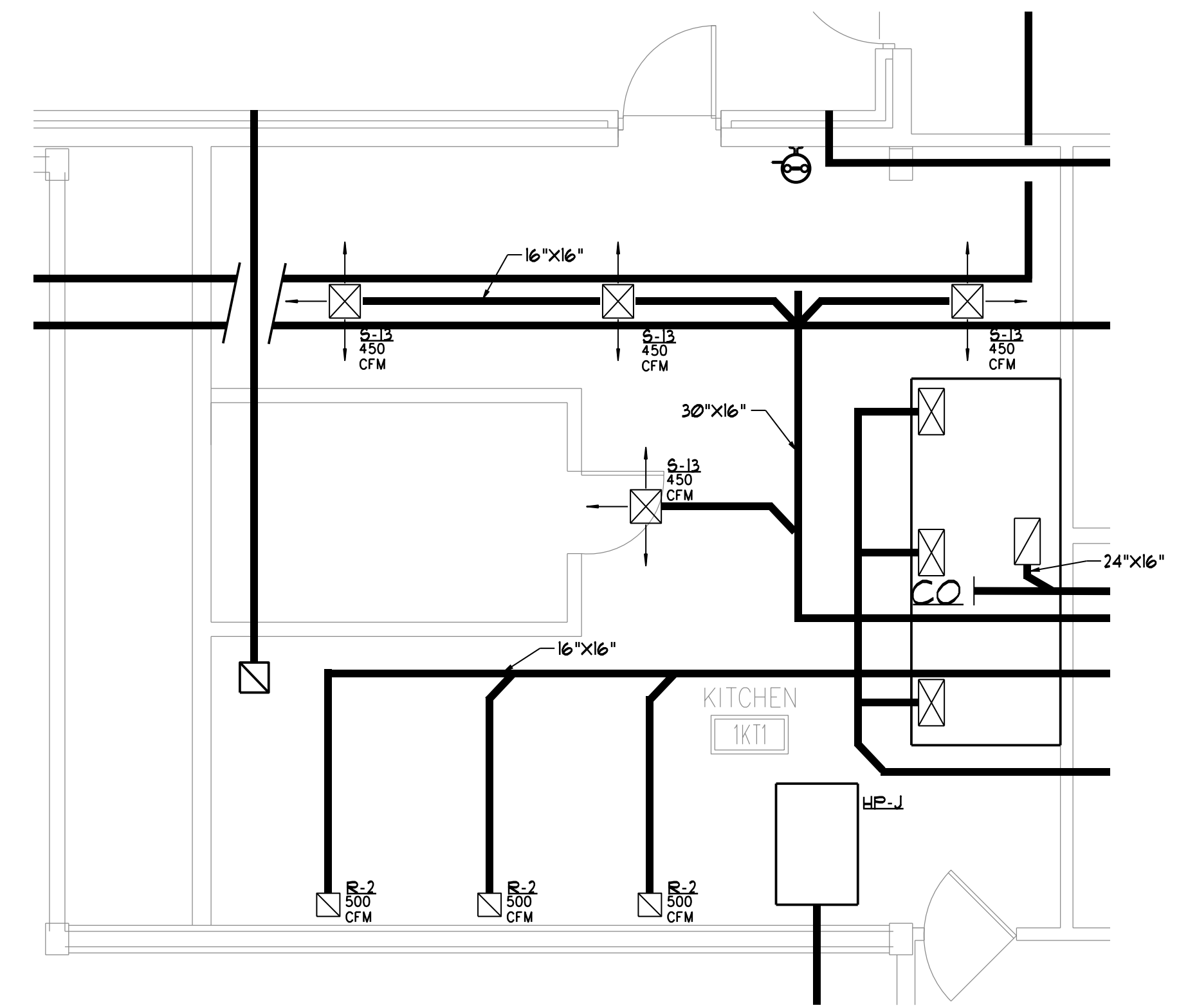
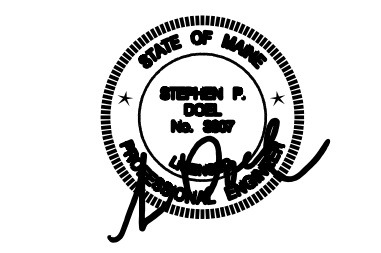
BY	
DATE	
REVISION	SCHEDULE
	REVISION DESCRIPTION

**OPENGAGE**  
CONSTRUCTION CORPORATION  
11 CORPORATE DRIVE, BELMONT NH 03220  
PHONE (603) 527-9090 FAX (603) 527-9191

**FIRST FLOOR HVAC PLAN**

PROJECT: **COMMERCIAL & MAPLE STREET MIXED USE DEVELOPMENT**  
PORTLAND, ME.

DATE: 06-06-2013  
SCALE: 1/8" = 1'-0"  
DRAWN BY:

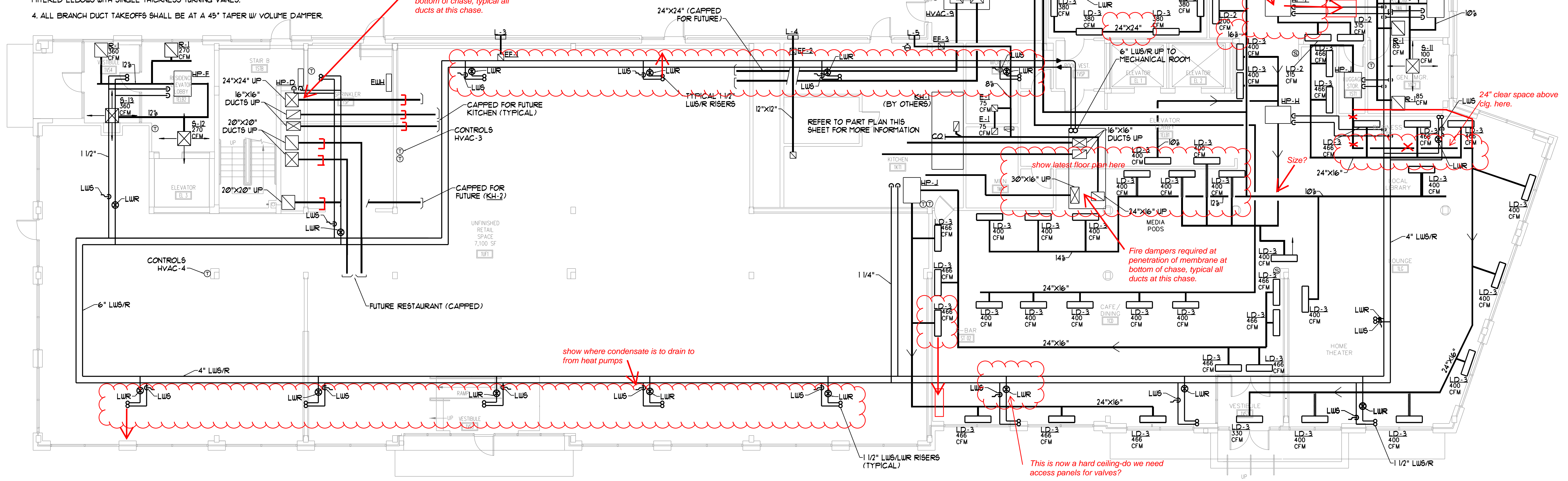


**KITCHEN PART PLAN**  
SCALE: 1/4" = 1'-0"

**GENERAL NOTES**

1. PROVIDE 1" THICK ACOUSTICAL DUCT LINER UP AND DOWNSTREAM OF ALL HVAC UNITS AND HORIZONTAL HEAT PUMPS FOR FIFTEEN (15) FEET.
2. PROVIDE BOLTED AND GASKETED CLEANOUT DOORS AT EACH FLOOR LEVEL FOR KHI AND KH2 EXHAUST DUCTS. COORDINATE WITH ACCESS PANELS INDICATED ON ARCHITECTURAL DRAWINGS.
3. 90° ELBOWS SHALL HAVE A CENTERLINE RADIUS EQUAL TO 15 TIMES THE DUCT WIDTH OR MITERED ELBOWS WITH SINGLE THICKNESS TURNING VANES.
4. ALL BRANCH DUCT TAKEOFFS SHALL BE AT A 45° TAPER W/ VOLUME DAMPER.

Fire dampers required at penetration of membrane at bottom of chase, typical all ducts at this chase.



**FIRST FLOOR PLAN**  
SCALE: 1/8" = 1'-0"