

REVISION	SCHEDULE	REVISION DESCRIPTION

OPENEDGE
CONSTRUCTION CORPORATION
11 CORPORATE DRIVE, BELMONT, NH 03220
PHONE: (603) 527-9090 FAX: (603) 527-9191

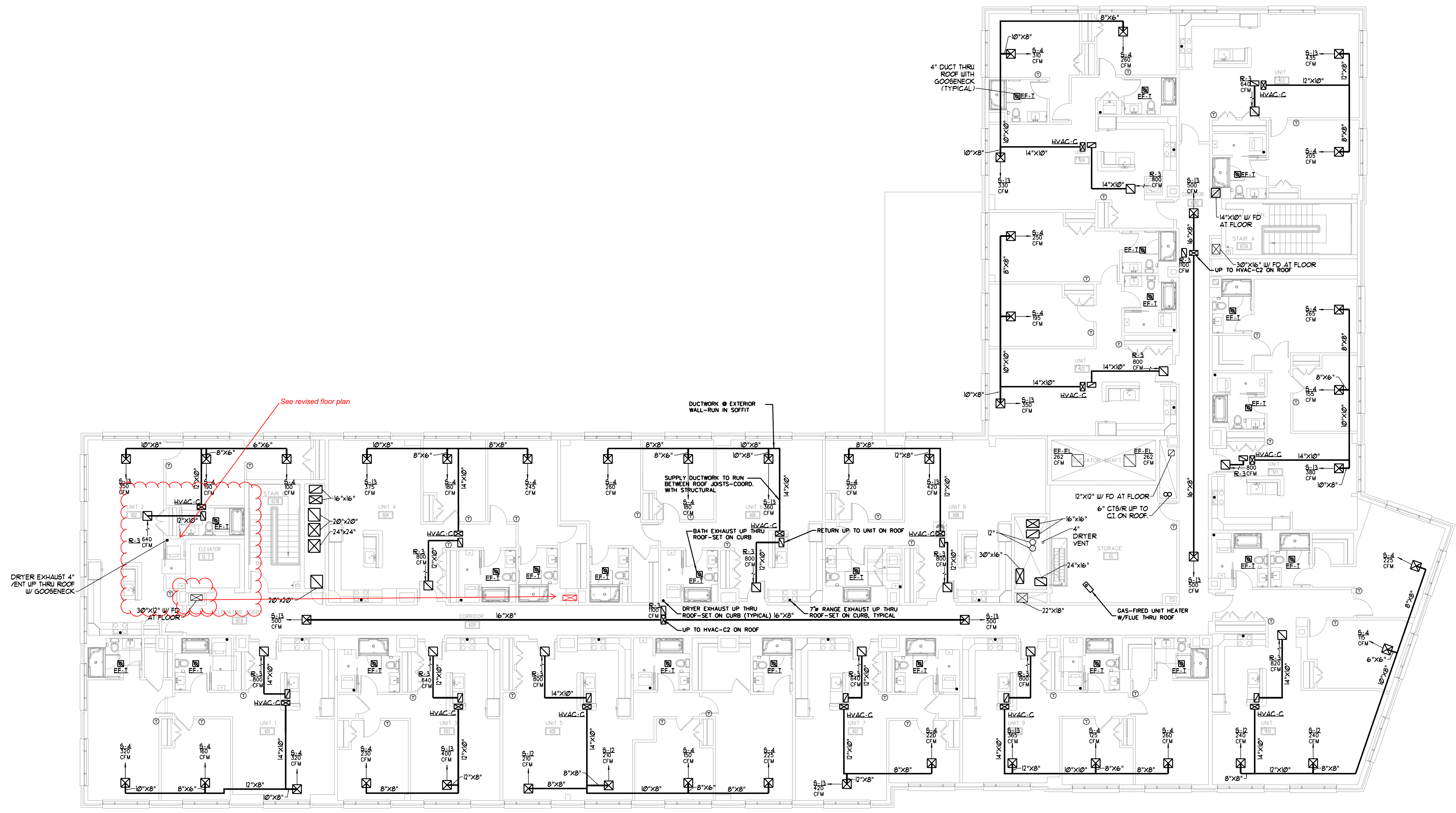
SIXTH FLOOR HVAC PLAN

PROJECT: **COMMERCIAL & MAPLE STREET MIXED USE DEVELOPMENT**
PORTLAND, ME.

DATE: 06-06-2013
SCALE: 1/8" = 1'-0"
DRAWN BY: **M4**



COPYRIGHT 2012 BY O.C.C.



SIXTH FLOOR PLAN
SCALE: 1/8" = 1'-0"