

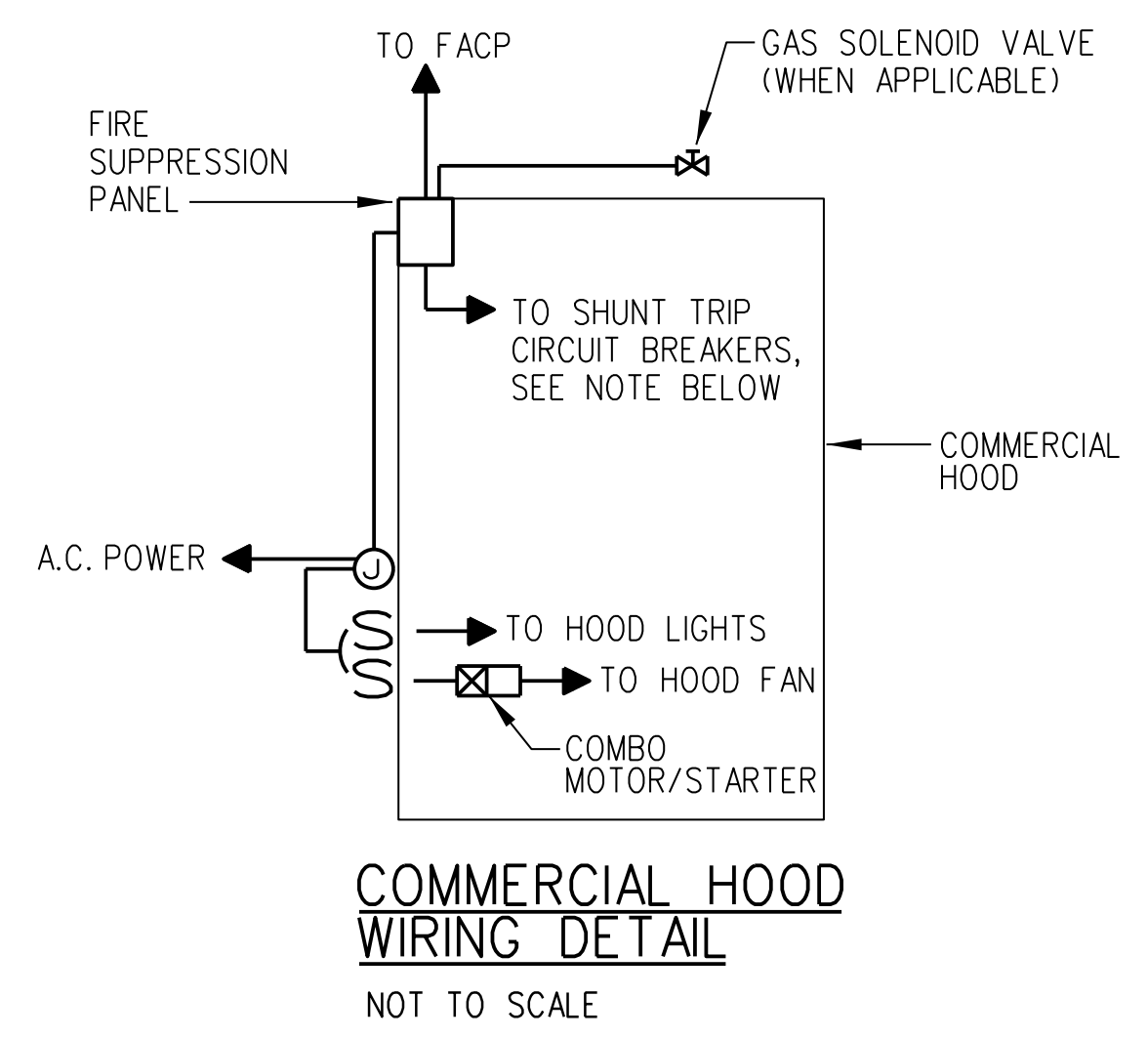
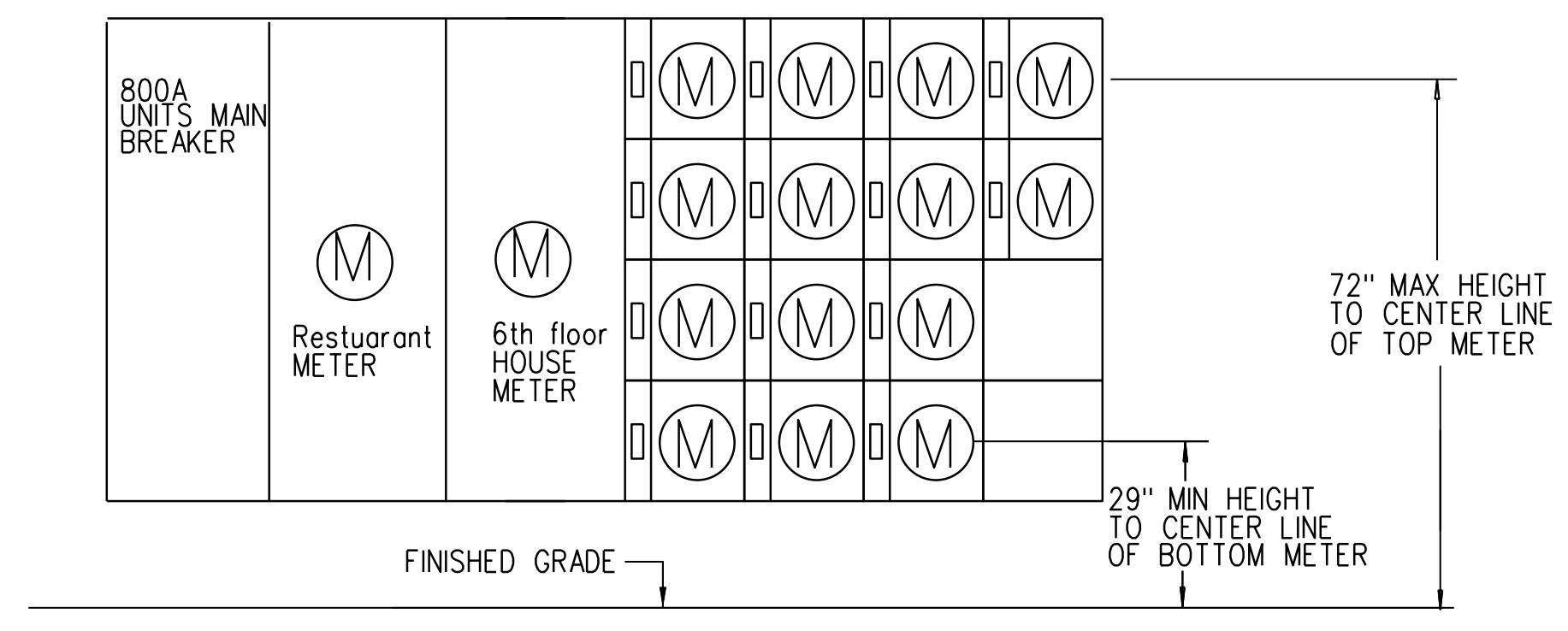
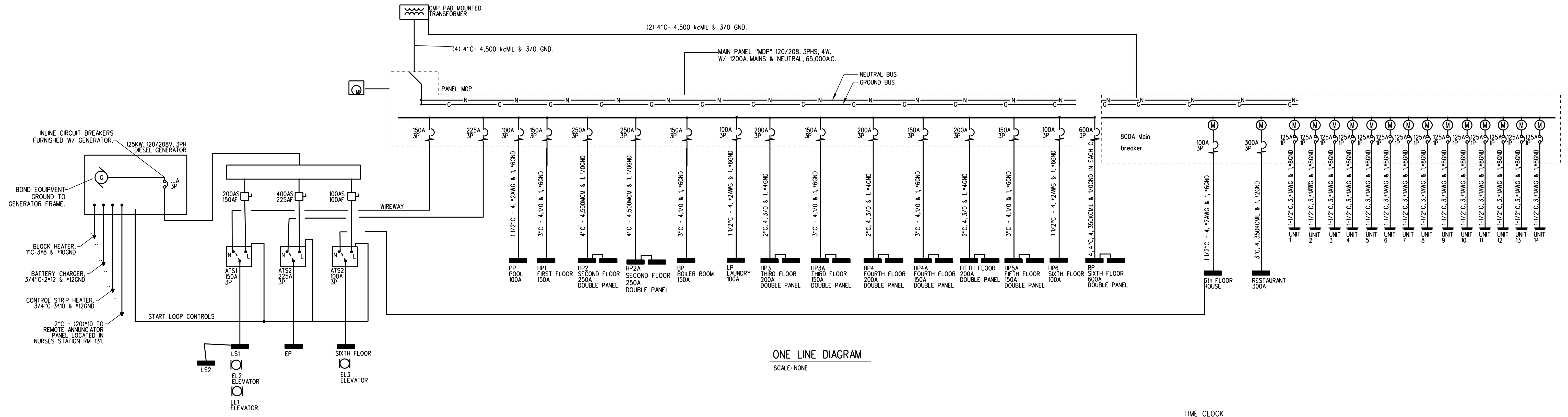
REVISION	SCHEDULE	REVISION DESCRIPTION

DATE	BY

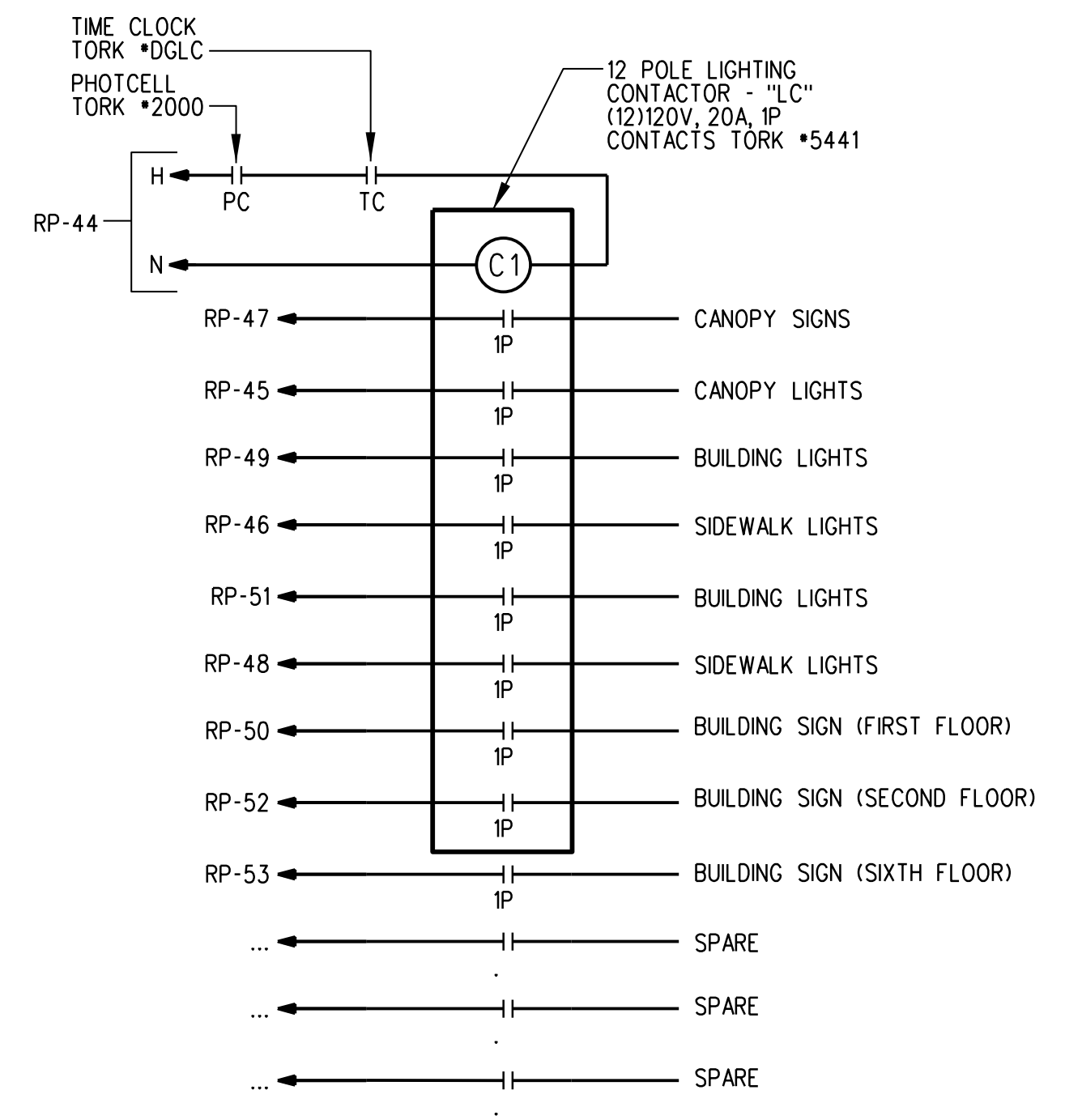
OPEGUNG
CONSTRUCTION CORPORATION
11 CORPORATE DRIVE, BELMONT NH 03320
PHONE: (603) 257-9090 FAX: (603) 257-9191

PROJECT: COMMERCIAL & MAPLE STREET MIXED USE DEVELOPMENT
PORTLAND ME.

DATE:	12-22-2014
SCALE:	AS NOTED
DRAWN BY:	CAT
SHEET:	



NOTE: OUTLETS UNDER HOOD SHALL BE SUPPLIED BY SHUNT TRIP CIRCUIT BREAKERS



PROVIDE BODINE GTD20 BYPASS RELAY FOR BUILDING LIGHTS, PROVIDE 20 AMPERE CIRCUIT BREAKERS FOR BRANCH CIRCUITS.