

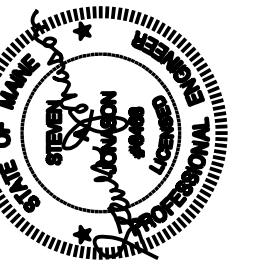
| REVISION | SCHEDULE | REVISION DESCRIPTION |
|----------|----------|----------------------|
| | | |

OPETECH
CONSTRUCTION CORPORATION
11 CORPORATE DRIVE, BELMONT, NH 03320
PHONE: (603) 257-9090 FAX: (603) 257-9191

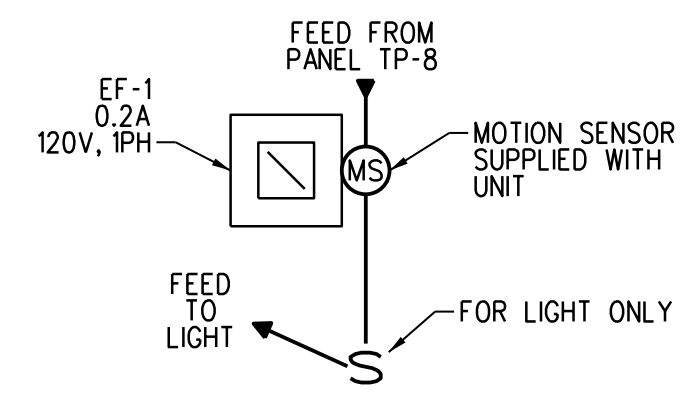
**SIXTH FLOOR
POWER &
TEL/DATA PLAN**

PROJECT:
COMMERCIAL &
MAPLE STREET
MIXED USE DEVELOPMENT
PORTLAND, ME.

DATE: 12-22-2014
SCALE: AS NOTED
DRAWN BY: CAT



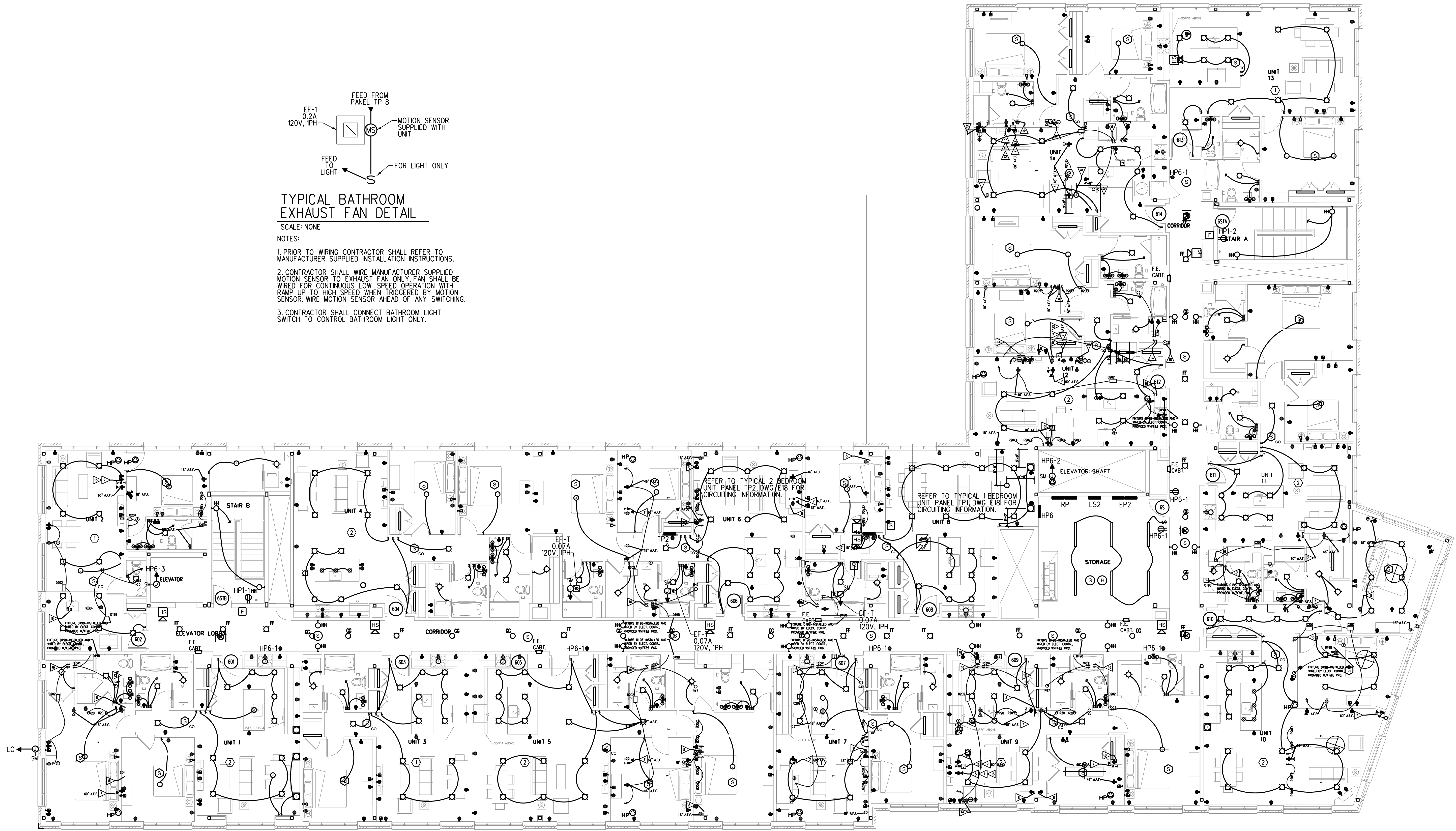
COPYRIGHT 2012 BY O.C.C.



TYPICAL BATHROOM EXHAUST FAN DETAIL
SCALE: NONE

NOTES:

1. PRIOR TO WIRING CONTRACTOR SHALL REFER TO MANUFACTURER SUPPLIED INSTALLATION INSTRUCTIONS.
2. CONTRACTOR SHALL WIRE MANUFACTURER SUPPLIED MOTION SENSOR TO EXHAUST FAN ONLY. FAN SHALL BE WIRED FOR CONTINUOUS LOW SPEED OPERATION WITH RAMP UP TO HIGH SPEED WHEN TRIGGERED BY MOTION SENSOR. WIRE MOTION SENSOR AHEAD OF ANY SWITCHING.
3. CONTRACTOR SHALL CONNECT BATHROOM LIGHT SWITCH TO CONTROL BATHROOM LIGHT ONLY.



GENERAL NOTES

1. REFER TO DRAWING E7 FOR POWER & TEL/DATA LEGENDS AND DRAWING E8 FOR POWER NOTES.
2. REFER TO DRAWINGS FA1 THRU FA9 FOR LIFE SAFETY AND FIRE ALARM SYSTEM INFORMATION.

WORK NOTES

- ① REFER TO TYPICAL ONE BEDROOM UNIT LAYOUT THIS SHEET.
- ② REFER TO TYPICAL TWO BEDROOM UNIT LAYOUT THIS SHEET.

SIXTH FLOOR POWER & TEL/DATA PLAN

SCALE: 1/8" = 1'-0"