

**POWER NOTES:**

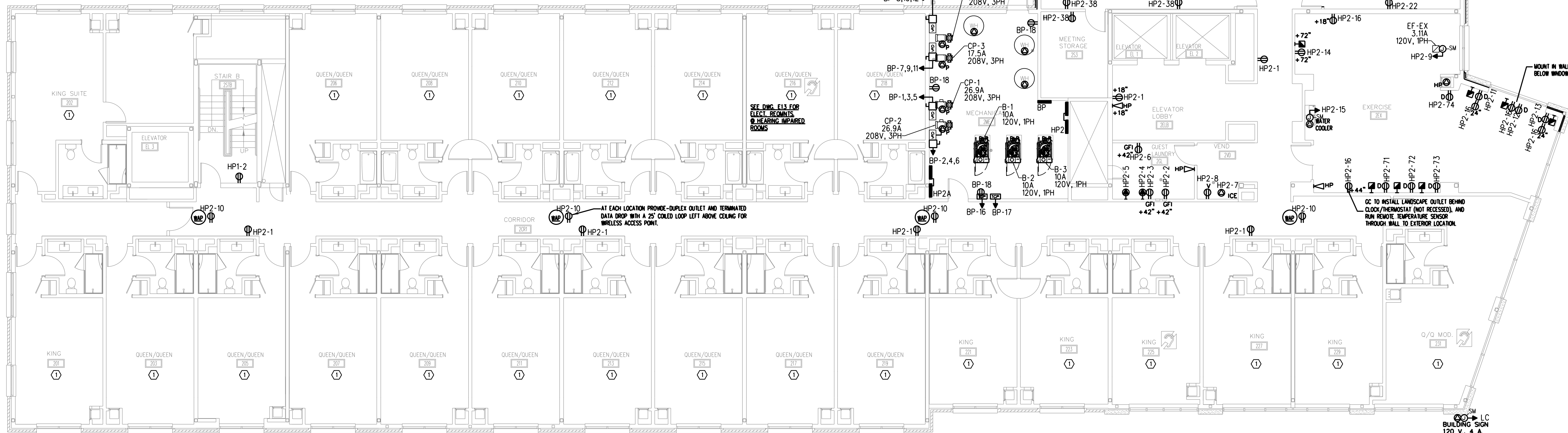
- ELECTRICAL WORK SHALL CONFORM TO ALL LOCAL, STATE, AND FEDERAL STANDARDS, CODES, AND GUIDELINES.
- SIGNIFICANT DESIGN ALTERATIONS, ADDITIONS, OR DISCREPANCIES SHALL BE BROUGHT TO THE ATTENTION OF THE DESIGN PROFESSIONAL BEFORE PROCEEDING.
- THE ELECTRICAL CONTRACTOR IS RESPONSIBLE FOR COORDINATING THE ELECTRICAL SYSTEM INSTALLATION WITH ALL TRADES INCLUDING MECHANICAL, ARCHITECTURAL, STRUCTURAL, AND PLUMBING.
- EACH HVAC UNIT TO HAVE ONE 120V OUTLET LOCATED IN THE ROOM ADJACENT TO THE UNIT.
- RECEPTACLE MOUNTING HEIGHT 18" TO CENTER OF RECEPTACLE, UNLESS NOTED OTHERWISE (U.N.O.).
- PROVIDE A 208/120V 3P ELECTRICAL ENTRANCE OF SUFFICIENT SIZE TO ACCOMMODATE ALL EQUIPMENT INDICATED.
- 120/240V SUBPANEL TO BE INSTALLED IN ELECTRICAL ROOM OR UTILITY ROOMS AS INDICATED ON PLANS OR AS REQUIRED FOR SERVICING EACH FLOOR.
- AN ELECTRICAL FEEDER TO BE INSTALLED FOR AN EXTERIOR SIGN.
- WHERE FEASIBLE DEVICES SHALL BE STACKED VERTICALLY OVER EACH OTHER AND HIGHLY VISIBLE LOCATIONS AND ACCENT WALLS SHALL BE AVOIDED.
- BATHROOM EXHAUST FANS SHALL BE CONTROLLED AS INDICATED IN THE MECHANICAL LEGEND.
- ELECTRICAL CONTRACTOR IS RESPONSIBLE FOR SUPPLYING CONDUITS TO THE BUILDING FOR TELEPHONE FIBER OPTIC AND CABLE SERVICES, AS REQUIRED.
- ELECTRICAL CONTRACTOR IS TO PROVIDE FIXTURE SUBMITTALS AND CIRCUITED DRAWINGS, INCLUDING PANEL DIAGRAMS FOR APPROVAL PRIOR TO INSTALLATION.
- ELECTRICAL CONTRACTOR IS RESPONSIBLE FOR SUPPLYING ALL PRIMARY AND SECONDARY CONDUITS AND ALL SECONDARY WIRING AT TRANSFORMER LOCATION.
- MAXIMUM 8 DUPLEX OUTLETS PER 20 AMP. CIRCUIT. NO BACK TO BACK JUNCTION BOXES WILL BE ACCEPTED.
- SUPPLY POWER WIRING FOR MECHANICAL EQUIPMENT AS REQUIRED.
- ALL EXPOSED WIRING SYSTEMS TO BE RUN IN E.M.T. OR RIGID CONDUITS AND RUN TIGHT TO ROOF OR FLOOR DECK OR CONTINUOUSLY ALONG STRUCTURAL COMPONENTS.
- CEILING DO NOT SERVE AS RETURN AIR PLENUM.
- PAINTED PLYWOOD MOUNTING BOARDS TO BE INSTALLED FOR ELECTRICAL PANELS.
- COLOR FOR ELECTRICAL COVER PLATES AND COMPONENTS TO MATCH THE BUILDING COLOR SCHEME.
- FLOOR/CEILING ASSEMBLIES ARE 2 HR. FIRE-RATED. ROOF/CEILING ASSEMBLIES ARE 1 HR. FIRE-RATED.
- ALL PENETRATIONS THROUGH FIRE-RESISTANT RATED WALL, FLOOR/CEILING AND ROOF/CEILING ASSEMBLIES SHALL BE MADE IN ACCORDANCE WITH AN APPROVED U.L. LISTED THRU-PENETRATION ASSEMBLY AND SUCH ASSEMBLY IS THE RESPONSIBILITY OF THE ELECTRICAL CONTRACTOR.
- AN EMERGENCY BACKUP GAS GENERATOR SHALL BE PROVIDED TO RUN ELEVATOR, FOOD STORAGE EQUIPMENT, COMMUNICATION EQUIPMENT AND ANY OTHER EMERGENCY EQUIPMENT AS REQUIRED BY CODE OR SCOPE OF WORK.

SEE DWG. E12 & E13 FOR TYPICAL GUESTROOM  
POWER/LIGHTING LAYOUTS

SEE DWG. E13 FOR  
ELECT. REQUISITS  
HEARING IMPAIRED  
ROOMS

AT EACH LOCATION PROVIDE DUPLEX OUTLET AND TERMINATED  
DATA DROP WITH A 2' COILED LOOP LEFT ABOVE CEILING FOR  
WIRELESS ACCESS POINT.

GC TO INSTALL LANDSCAPE OUTLET BEHIND  
CLOCK/THERMOSTAT (NOT RECESSED), AND  
RUN REMOTE TEMPERATURE SENSORS  
THROUGH WALL TO EXTERIOR LOCATION.



**GENERAL NOTES**

- REFER TO DRAWING E7 FOR POWER & TEL/DATA LEGENDS.
- REFER TO DRAWINGS FA1 THRU FA9 FOR LIFE SAFETY AND FIRE ALARM SYSTEM INFORMATION.

**WORK NOTE**

- ① REFER TO DRAWINGS E12 AND E13 FOR TYPICAL GUEST ROOM LIGHTING AND POWER LAYOUTS.

**SECOND FLOOR POWER & TEL/DATA PLAN**

SCALE: 1/8" = 1'-0"

DATE	REVISION	SCHEDULE	REVISION DESCRIPTION

**OPENEDGE**  
CONSTRUCTION CORPORATION  
11 CORPORATE DRIVE, BELMONT, NH 03320  
PHONE: (603) 537-9090 FAX: (603) 537-9191

**SECOND FLOOR  
POWER &  
TEL/DATA PLAN**

PROJECT: **COMMERCIAL &  
MAPLE STREET  
MIXED USE DEVELOPMENT**  
PORTLAND, ME.

DATE: 12-22-2014  
SCALE: AS NOTED  
DRAWN BY: CAT

SHEET: **18**

