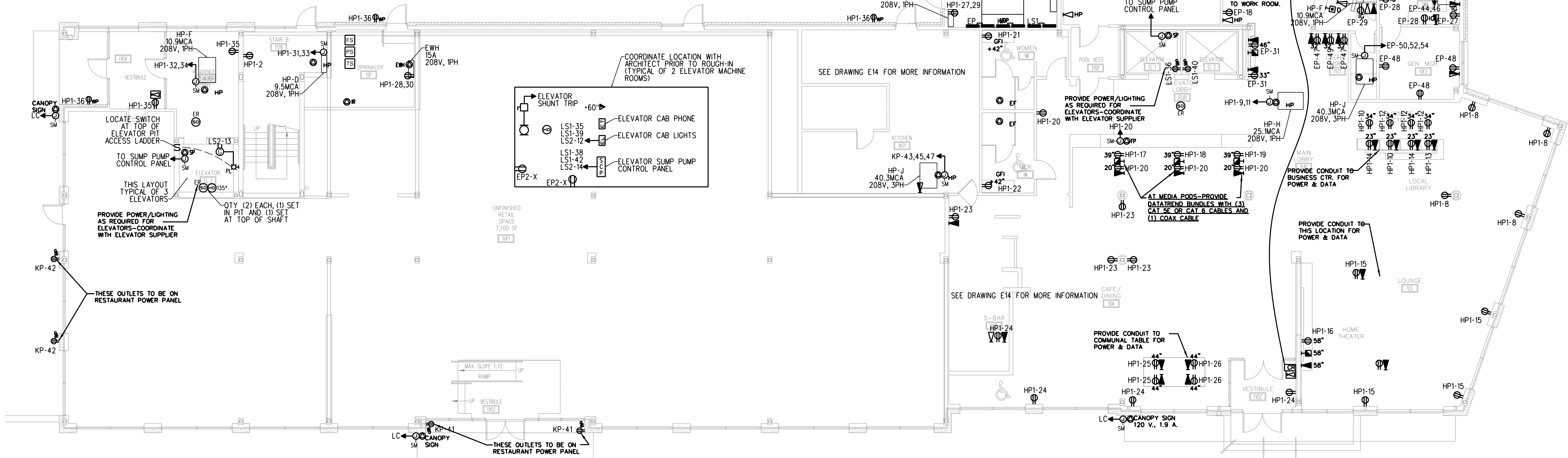


TELEPHONE AND DATA LEGEND	
SYMBOL	DESCRIPTION
	CABLE JACK
	COMBINATION DATA AND PHONE JACK
	DATA JACK
	PHONE JACK
	PHONE JACK FOR HOUSE PHONE-44" A.F.F.
	DOOR LIGHT
	PHONE LIGHT
	PUSH BUTTON SWITCH
	INTERCOM STATION
	DRESS ALARM BUTTON UNDER FRONT EDGE OF COUNTER

POWER LEGEND	
SYMBOL	DESCRIPTION
	QUADPLEX RECEPTACLE (115V - 20 AMP) 18" A.F.F. TO C/A OF PLATE, TYP. U.N.O. D = DEDICATED CIRCUIT IG = ISOLATED GROUND
	DUPLEX RECEPTACLE (115V - 20 AMP) 18" A.F.F. TO C/A OF PLATE, TYP. U.N.O. D = DEDICATED CIRCUIT
	DUPLEX RECEPTACLE WITH GROUND FAULT INTERRUPT (115V - 20 AMP)
	DUPLEX RECEPTACLE (115V - 20 AMP)-ACTIVATED BY WALL SWITCH
	RECEPTACLE DEDICATED FOR CHAFING DISH (GF) MOUNTED 44" A.F.F. TO CENTER OF RECEPTACLE (120V - 600WATT 5.5 AMP, NEMA 5-15)
	DUPLEX RECEPTACLE DEDICATED FOR UPRIGHT FREEZER (GF) MOUNTED 18" A.F.F. TO CENTER OF RECEPTACLE (115V - 20 AMP)
	RECEPTACLE FOR RESIDENTIAL DRYER MOUNTED 42" A.F.F. (115V - 20 AMP)
	DUPLEX RECEPTACLE WITH GROUND FAULT INTERRUPT DEDICATED FOR RESIDENTIAL WASHER (GF) MOUNTED 42" A.F.F. (115V - 20 AMP)
	DUPLEX RECEPTACLE DEDICATED FOR ICE MAKER (GF) MOUNTED 18" A.F.F. TO CENTER OF RECEPTACLE (208V - 20 AMP)
	DUPLEX RECEPTACLE DEDICATED FOR JUICE DISPENSER (GF) MOUNTED 44" A.F.F. TO CENTER OF RECEPTACLE (115V - 15 AMP NEMA 5-15)
	DUPLEX RECEPTACLE WITH GROUND FAULT INTERRUPT DEDICATED FOR RESIDENTIAL MICROWAVE, (115V - 20 AMP)
	DUPLEX RECEPTACLE DEDICATED FOR UPRIGHT REFRIGERATOR (GF) MOUNTED 18" A.F.F. TO CENTER OF RECEPTACLE (115V - 20 AMP)
	DUPLEX RECEPTACLE DEDICATED FOR TOASTER (GF) MOUNTED 44" A.F.F. TO CENTER OF RECEPTACLE (115V - 20 AMP)
	DUPLEX RECEPTACLE DEDICATED FOR VENDING MACHINES (GF) MOUNTED 18" A.F.F. TO CENTER OF RECEPTACLE (115V - 20 AMP)
	DUPLEX RECEPTACLE DEDICATED FOR WATER COOLER CONNECTION (115V - 20 AMP)
	DUPLEX RECEPTACLE WITH GROUND FAULT INTERRUPT IN EXTERIOR WEATHERPROOF ENCLOSURE (115V - 20 AMP)
	RESIDENTIAL ELECTRIC RANGE (240V - 40 AMP)
	FLOOR MOUNTED DUPLEX RECEPTACLE (115V - 20 AMP)
	FLOOR MOUNTED QUAD RECEPTACLE (115V - 20 AMP)
	FLOOR MOUNTED DUPLEX RECEPTACLE (115V - 20 AMP) WITH PROVISIONS FOR TELEPHONE AND DATA CONNECTIONS
	CARD ACCESS ENTRY SYSTEM
	MAIN DISTRIBUTION PANEL
	TIMER CLOCK
	PHOTOCELL TO BE LOCATED ON ROOF
	SUB PANEL

POWER LEGEND	
SYMBOL	DESCRIPTION
	SINGLE SPECIAL PURPOSE CONNECTION (VERIFY VOLTAGE AND AMP WITH EQUIPMENT CUT-SHEET)
	GAS FIRED HVAC UNITS W/ COMPRESSOR CONDENSER LOCATED OUTSIDE, PROVIDE MAIN DISCONNECT TO COMPRESSOR CONDENSER
	DEDICATED CONVECTION OVEN CONNECTION (SINGLE PHASE, 208V - 30 AMP, NEMA 14-30)
	CIRCULATING PUMP
	POOL ROOM DEHUMIDIFICATION SYSTEM
	DUCTLESS SPLIT SYSTEM
	EXHAUST FAN CONNECTION
	FIRE ALARM PANEL CONNECTION
	FIREPLACE CONNECTION
	IRRIGATION SYSTEM CONNECTION, LOCATION TO BE DETERMINED
	POOL HEATER CONNECTION
	POOL PUMP CONNECTION
	SLIDING DOOR CONNECTION
	BUILDING MOUNTED SIGN CONNECTION
	SITE SIGN LIGHT CONNECTION (REFER TO SITE PLAN FOR LOCATION)
	SITE LIGHTING CONNECTION (REFER TO SITE PLAN FOR QUANTITY AND LOCATIONS)
	WATER HEATER CONNECTION
	COMMERCIAL DRYER CONNECTION
	COMMERCIAL WASHER CONNECTION
	RESIDENTIAL ELECTRIC DRYER CONNECTION
	ELECTRIC WALL HEATER CONNECTION
	UNIT HEATER CONNECTION
	ELEVATOR SUMP PUMP CONNECTION



GENERAL NOTE

1. REFER TO DRAWINGS FA1 THRU FA9 FOR LIFE SAFETY AND FIRE ALARM SYSTEM INFORMATION.

FIRST FLOOR POWER & TEL/DATA PLAN

SCALE: 1/8" = 1'-0"

REVISION	SCHEDULE	REVISION DESCRIPTION

OPENEDGE
CONSTRUCTION CORPORATION
11 CORPORATE DRIVE, BELMONT, NH 03320
PHONE: (603) 537-9090 FAX: (603) 521-9191

FIRST FLOOR POWER & TEL/DATA PLAN

PROJECT: **COMMERCIAL & MAPLE STREET MIXED USE DEVELOPMENT**
PORTLAND, ME.

DATE: 12-22-2014
SCALE: AS NOTED
DRAWN BY: CAT

