

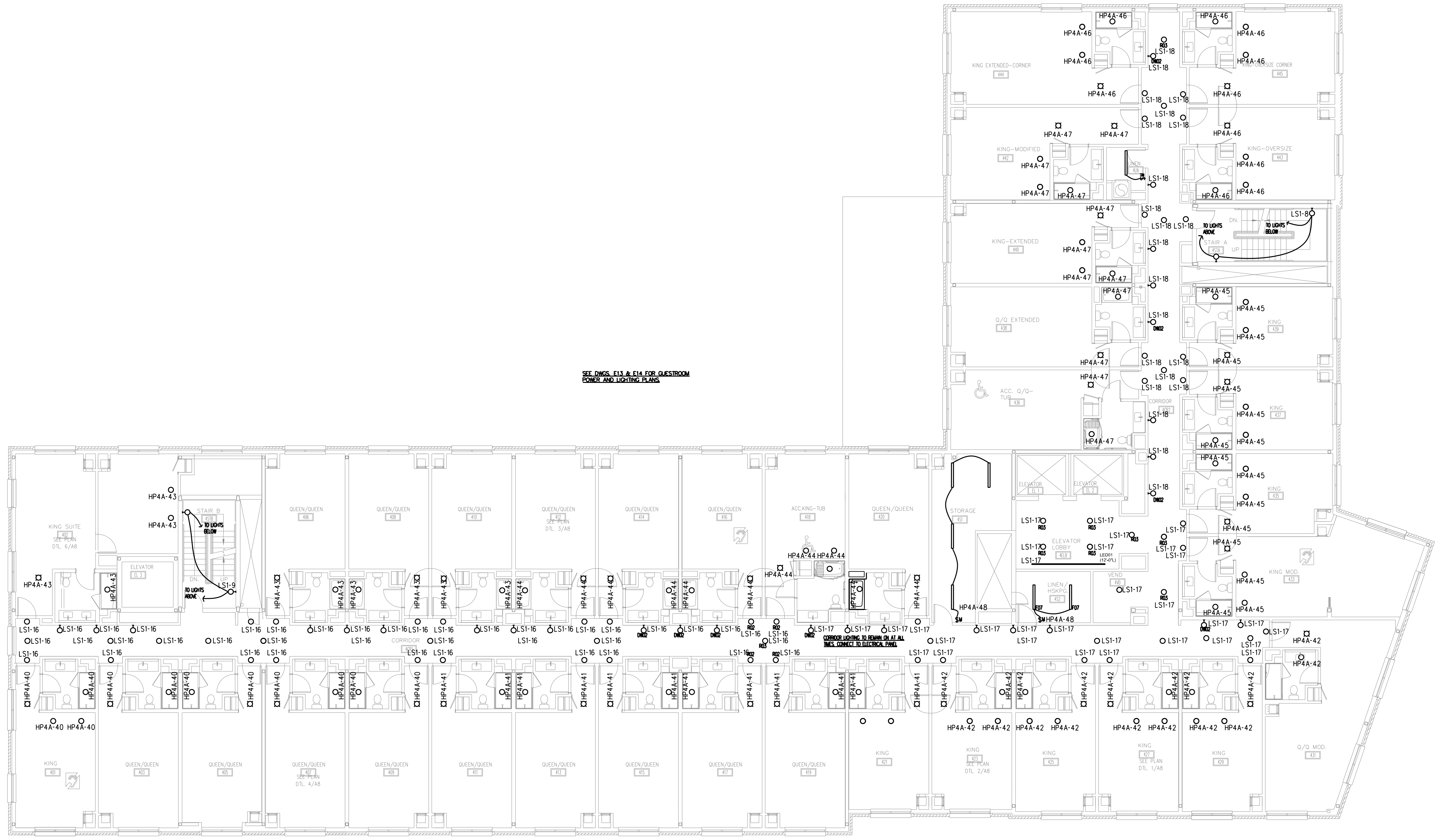
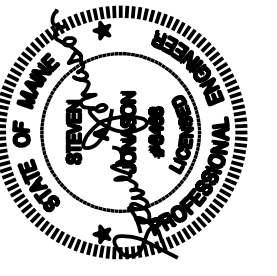
REVISION	SCHEDULE	REVISION DESCRIPTION

OPENEDGE
CONSTRUCTION CORPORATION
11 CORPORATE DRIVE, BELMONT, NH 03220
PHONE: (603) 251-9000 FAX: (603) 251-9191

FOURTH FLOOR LIGHTING PLAN

PROJECT: **COMMERCIAL & MAPLE STREET MIXED USE DEVELOPMENT**
PORTLAND, ME.

DATE:	12-22-2014
SCALE:	AS NOTED
DRAWN BY:	CAT



GENERAL NOTE
1. REFER TO DRAWING E1 FOR LIGHTING FIXTURE SCHEDULE AND LIGHTING NOTES.

FOURTH FLOOR LIGHTING PLAN
SCALE: 1/8" = 1'-0"