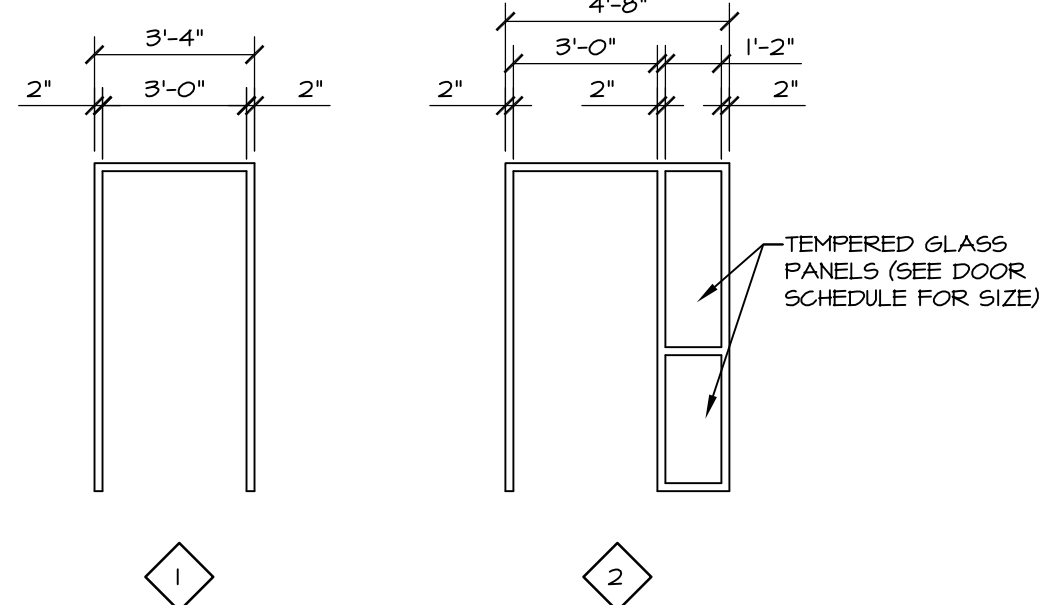


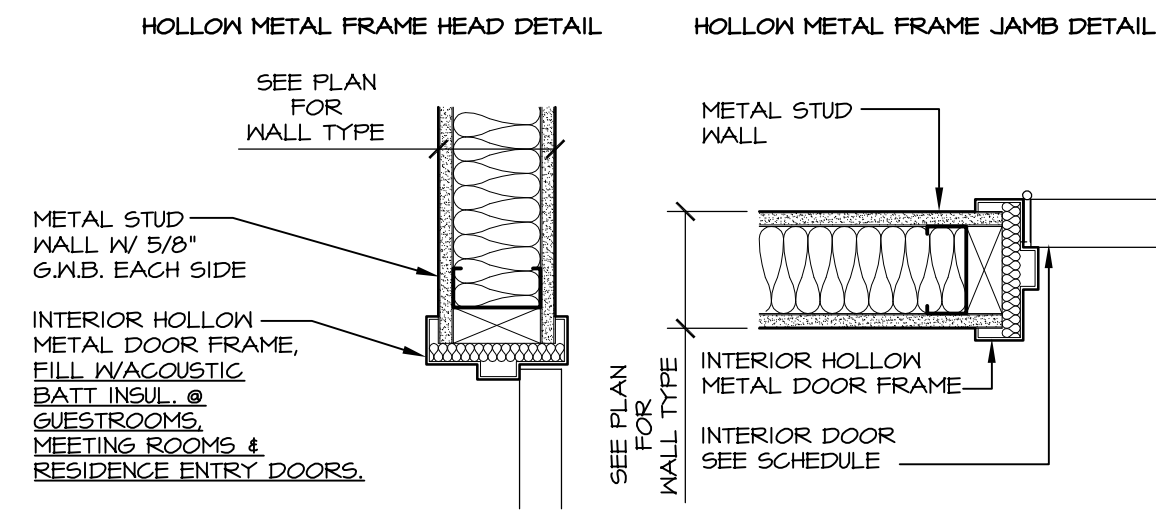
DOOR TYPES

1/4" = 1'-0"



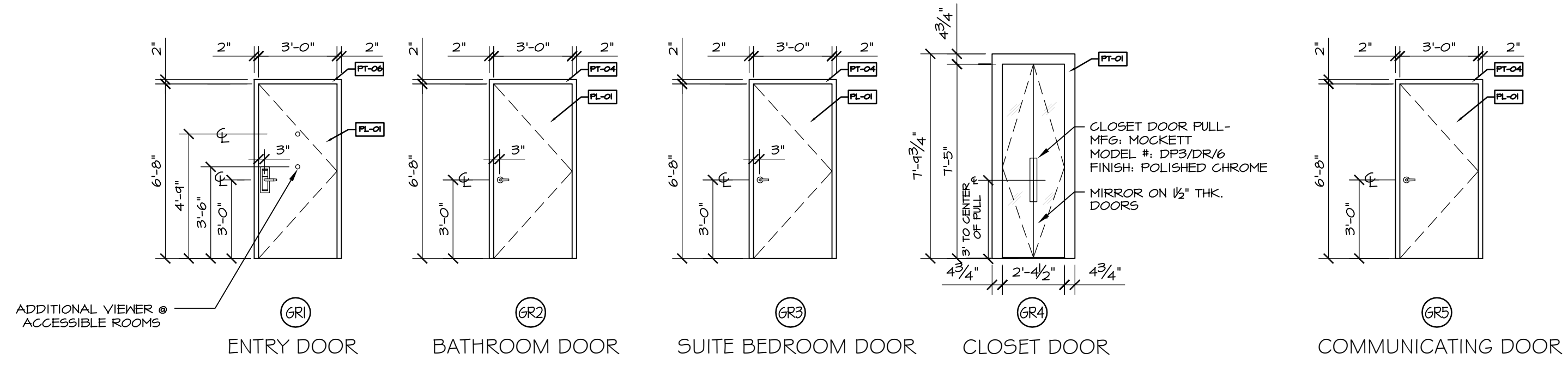
DOOR FRAME TYPES

1/4" = 1'-0"



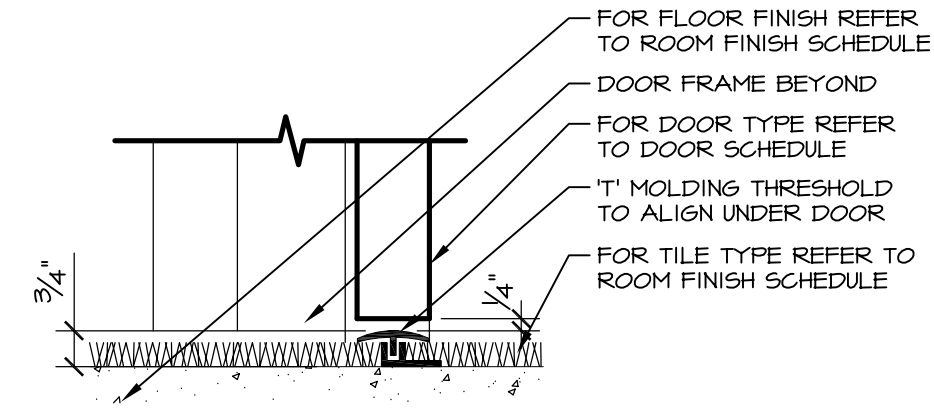
INTERIOR DOOR FRAME DETAILS

1/2" = 1'-0"



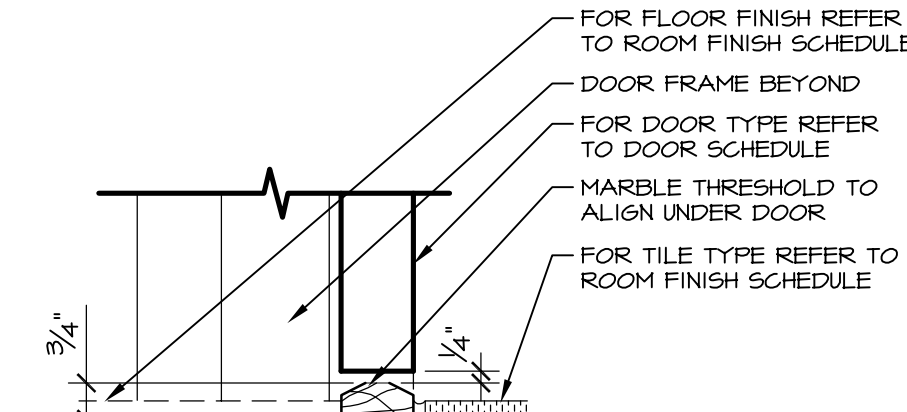
HOTEL GUEST ROOM DOOR/FRAME TYPES

1/4" = 1'-0"



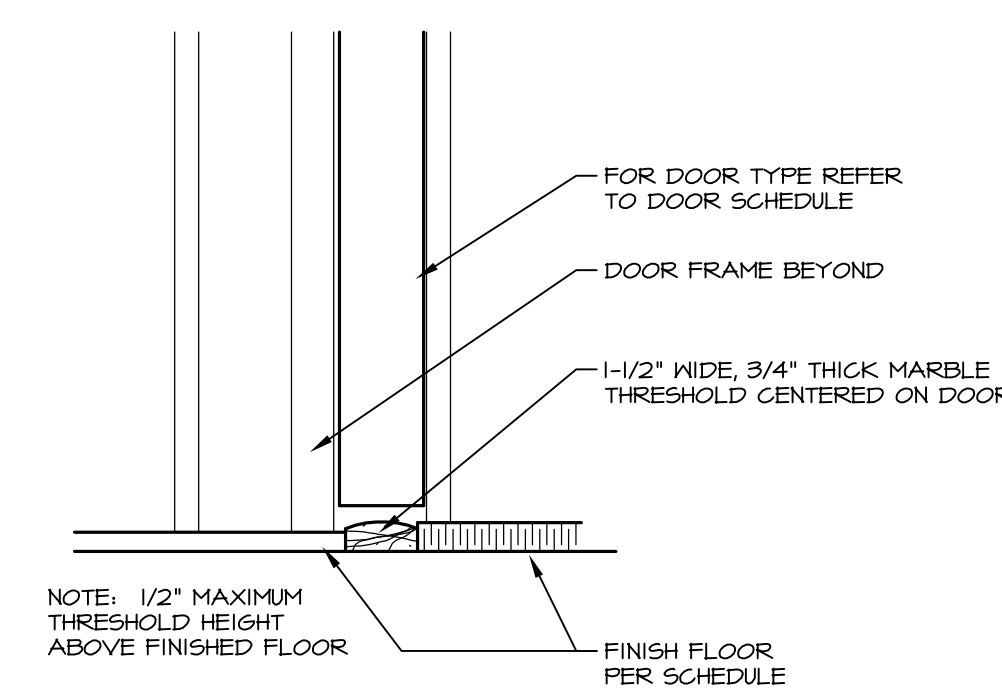
TYPICAL PVC SILL

3" = 1'-0"



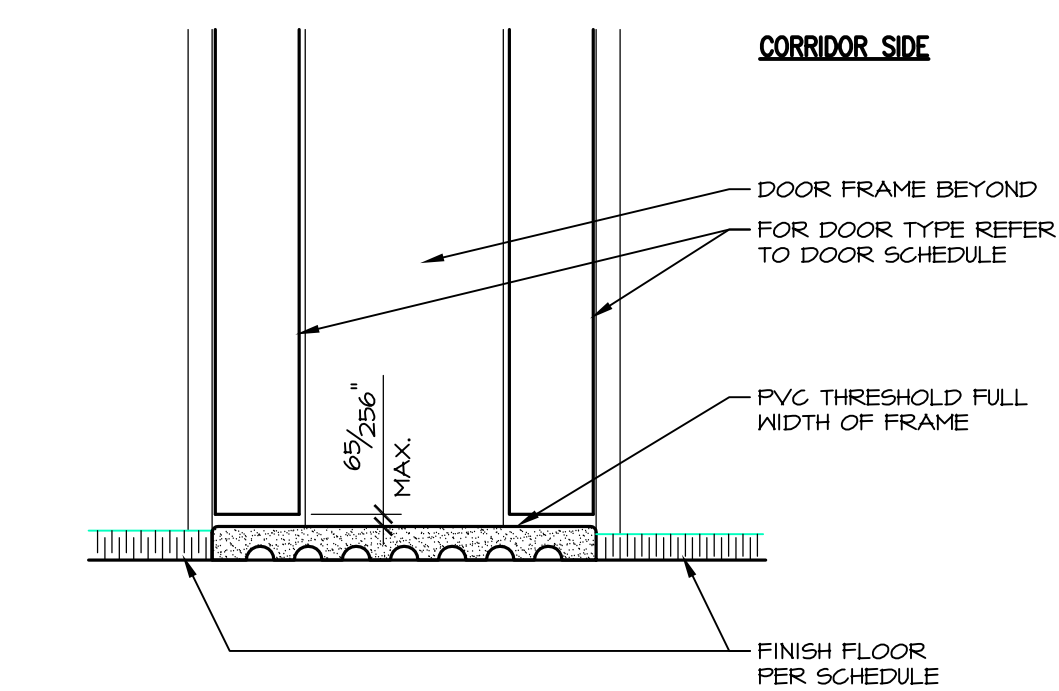
TYPICAL MARBLE SILL

3" = 1'-0"



TYPICAL MARBLE THRESHOLD

3" = 1'-0"

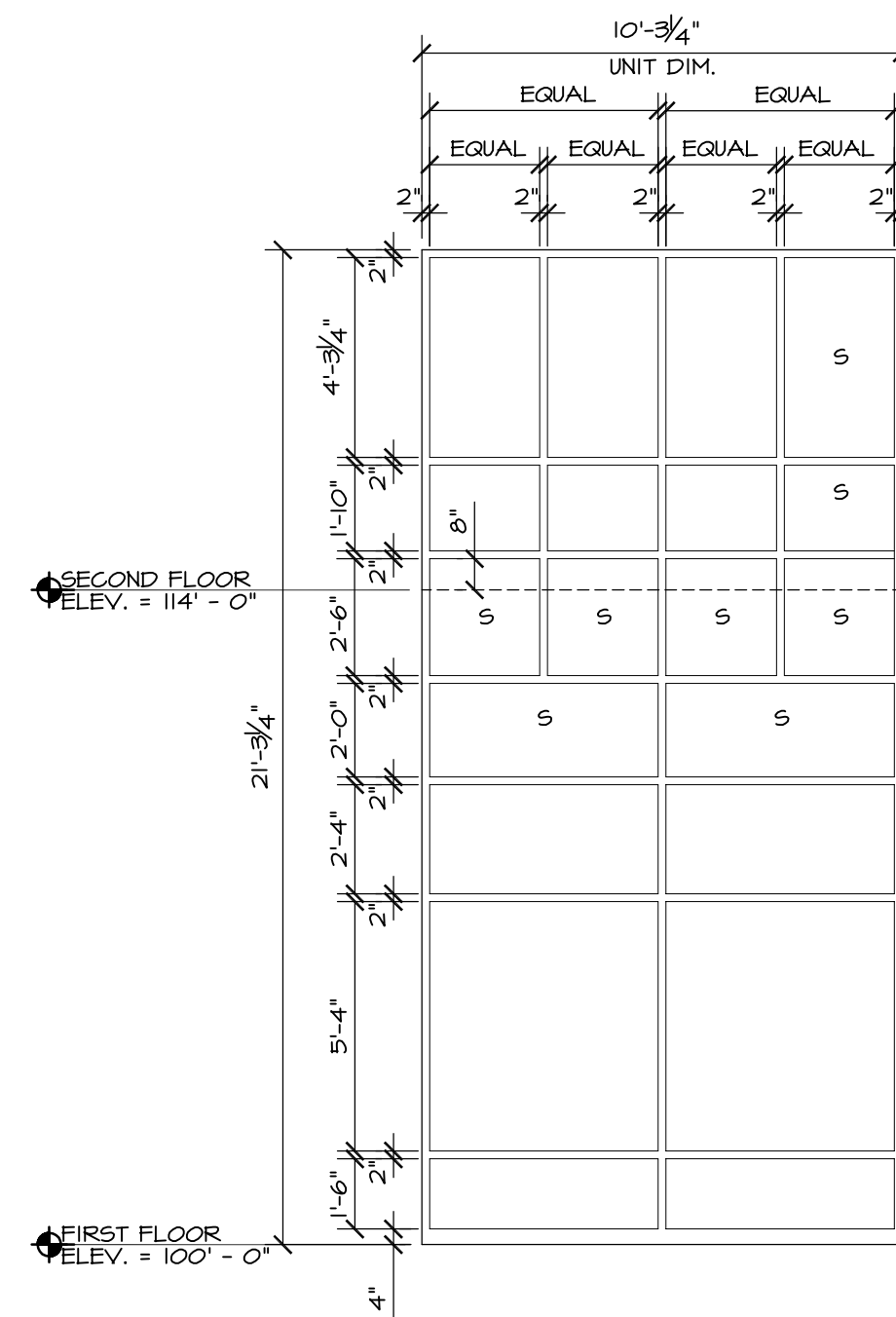


TYP. TRANSITION AT COMMUNICATING DOOR

3" = 1'-0"

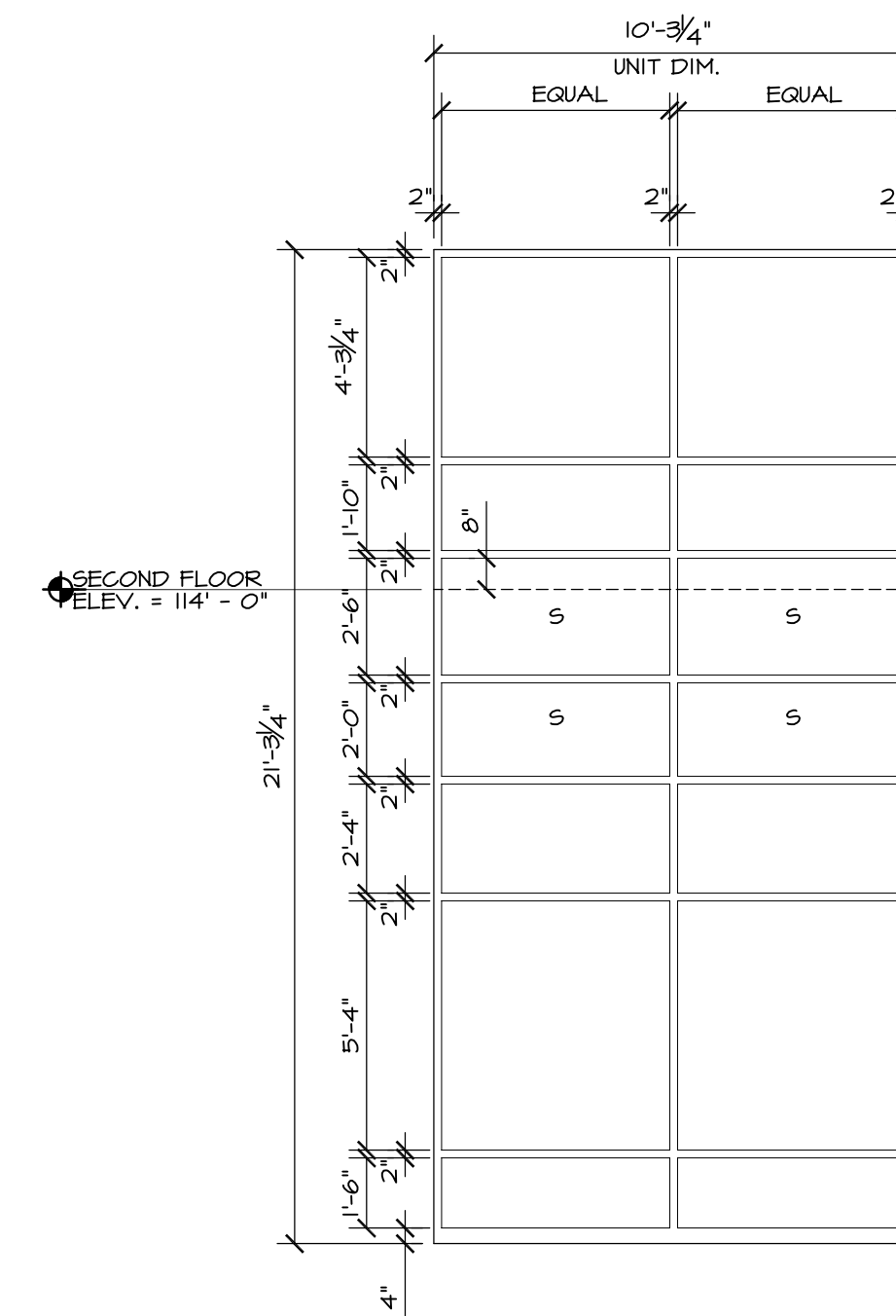
INTERIOR DOOR FRAME DETAILS

3" = 1'-0"

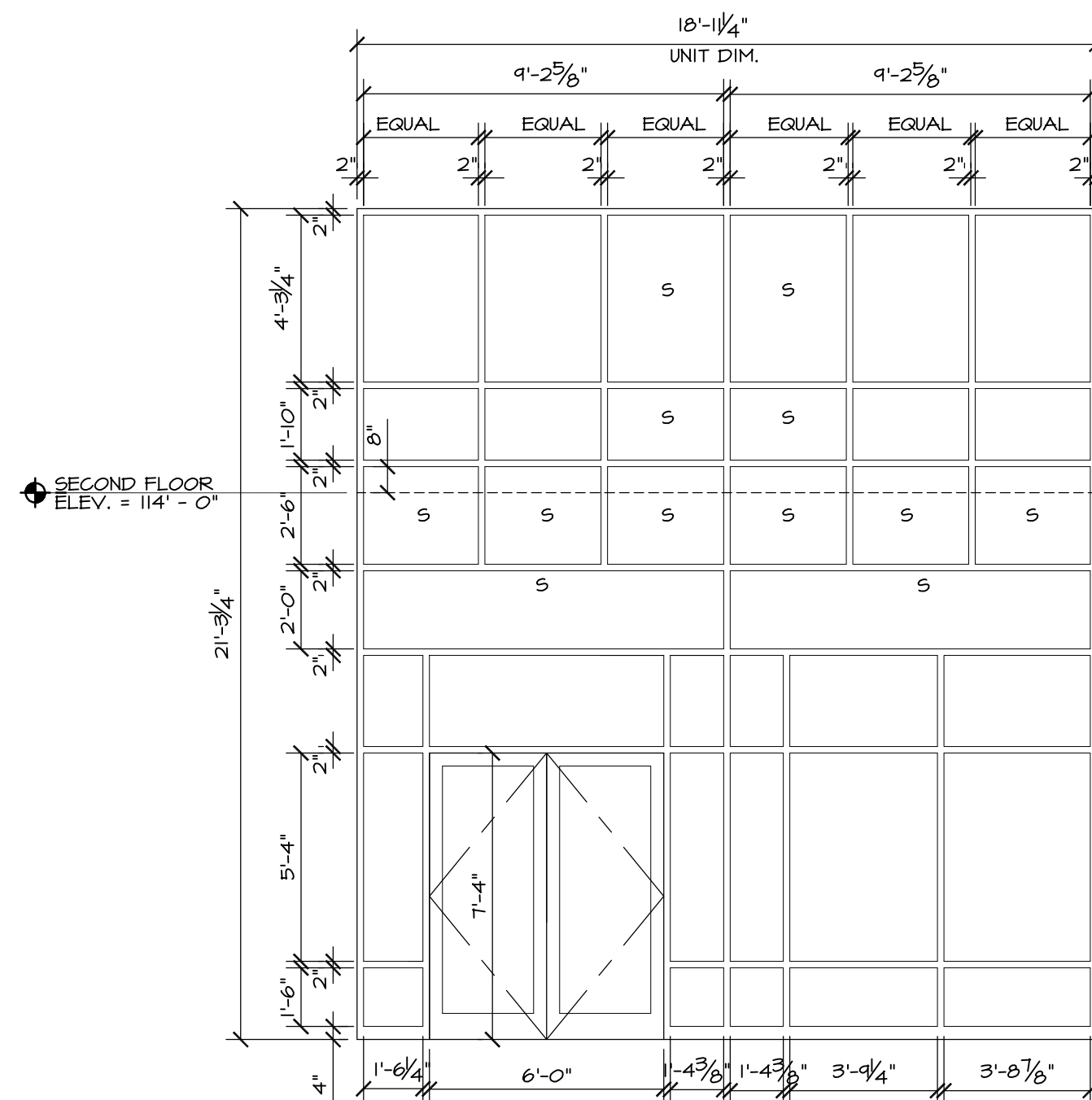


(D)
FIXED ALUMINUM

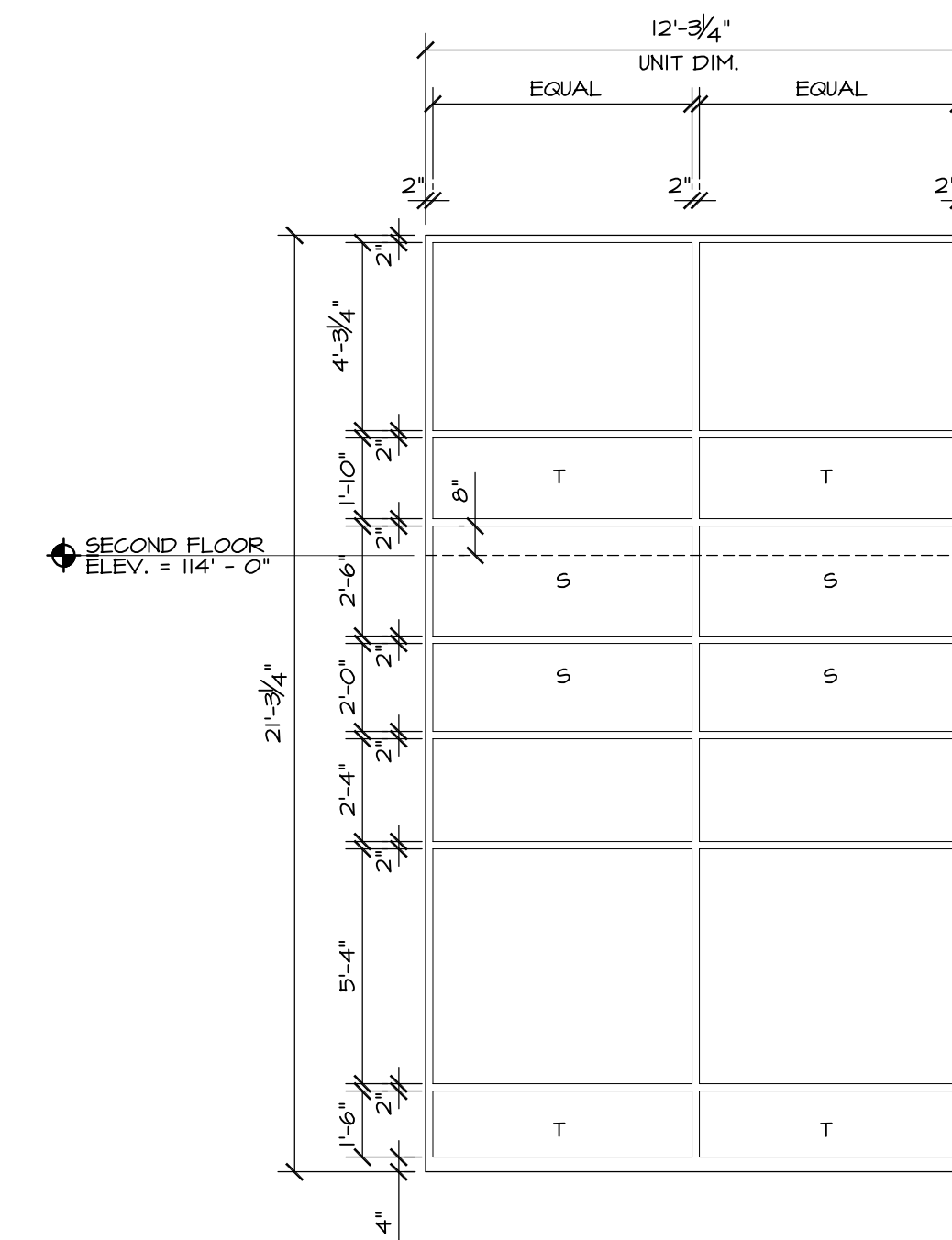
ONE (1) THIS
ONE (1) MIRRORED VIEW
SEE 2ND FLOOR PLAN



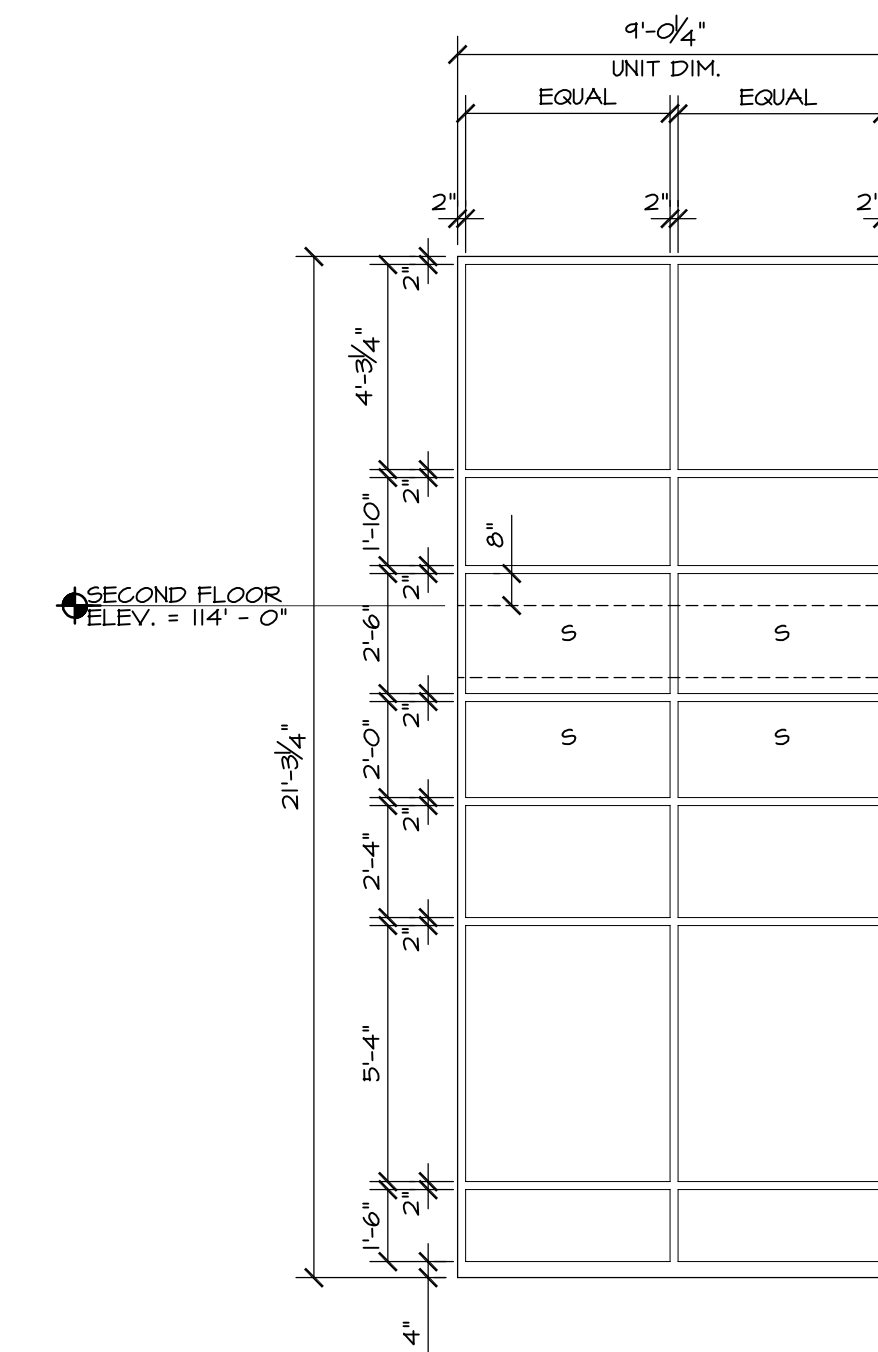
(D1)
FIXED ALUMINUM



(E)
FIXED ALUMINUM



(F)
FIXED ALUMINUM



(G)
FIXED ALUMINUM

WINDOW FRAME WILL NEED TO BE
MODIFIED TO ACCOMMODATE
FLOOR STRUCTURE-SEE WALL
SECTION 3/4"4.

CURTAIN WALL ELEVATIONS

1/4" = 1'-0"

REVISION SCHEDULE	BY
REVISION DESCRIPTION	
DATE	

COPECEE
CONSTRUCTION CORPORATION
11 CORPORATE DRIVE, BELMONT, NH 03220
PHONE (603) 527-9090 FAX (603) 527-9191

**CURTAIN WALL/
DOORS & WINDOWS**

**COMMERCIAL & MAPLE STREET
MIXED USE DEVELOPMENT**
PORTLAND, ME

PROJECT: COMMERCIAL & MAPLE STREET MIXED USE DEVELOPMENT
DATE: 05-09-13
SCALE: SEE PLAN
DRAWN BY: KPH
A21
SHEET:

