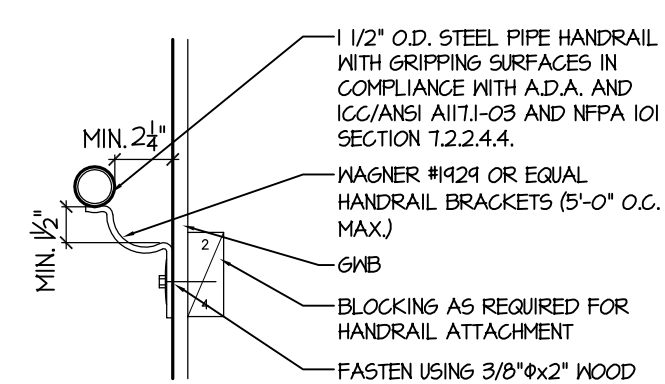


NOTES (BUILDING SECTIONS):

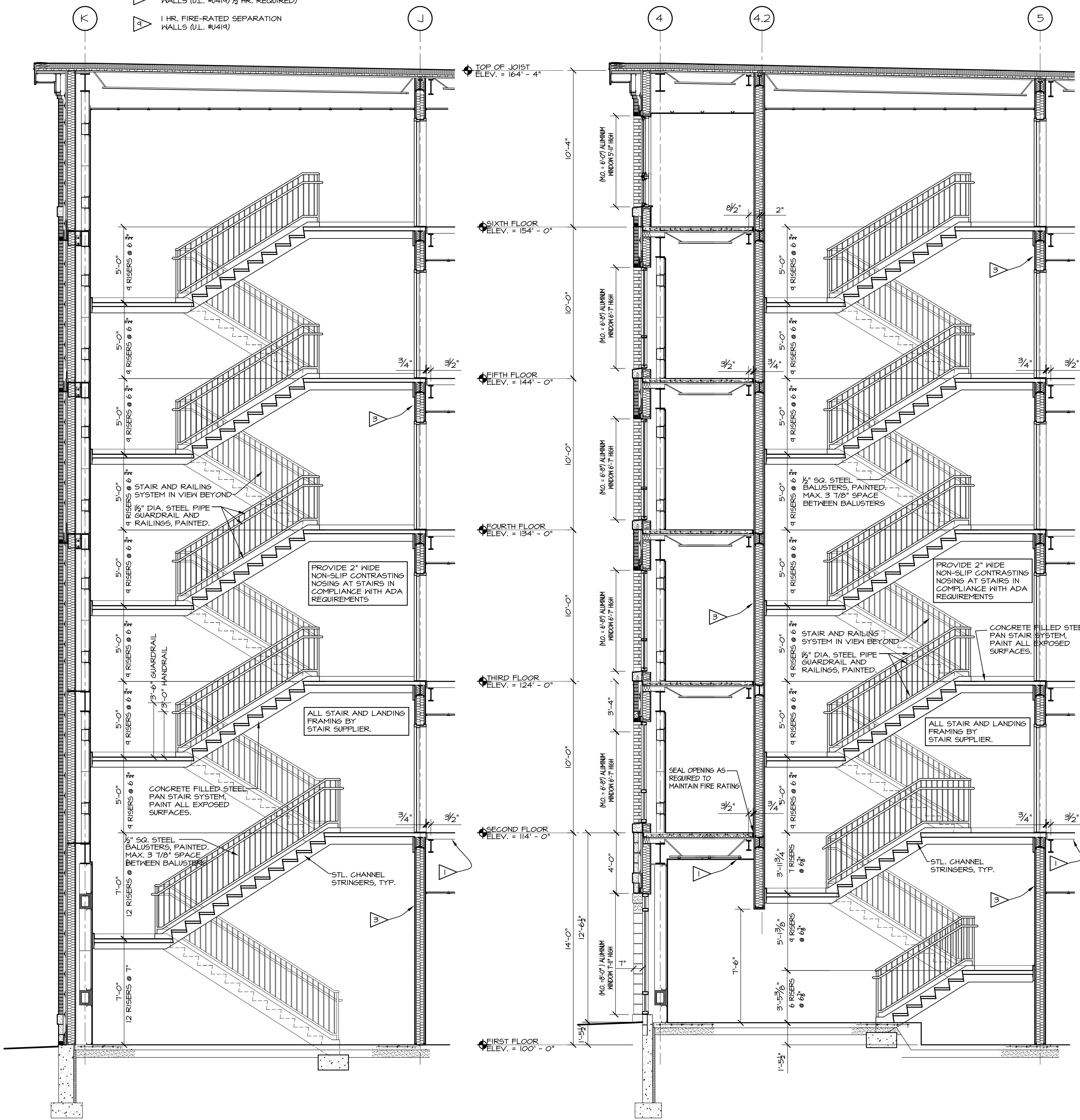
- 1 3 HR. FIRE-RATED FLOOR/CEILING ASSEMBLY (U.L. #5512) (U.L. #D402 AT 5 1/2" SLAB)
- 2 1 HR. FIRE-RATED FLOOR/CEILING ASSEMBLY (U.L. #5561) (1/2 HR. REQ'D.)
- 3 2 HR. FIRE-RATED ENCLOSURE (SEE PLAN FOR WALL TYPE DESIGNATION)
- 4 SUSPENDED ACOUSTICAL CEILING (NON-RATED)
- 5 GYPSUM BD. CEILING (NON-RATED)
- 6 1 HR. FIRE-RATED FLOOR/CEILING ASSEMBLY (U.L. #5205)
- 7 1 HR. FIRE-RATED CORRIDOR WALLS (U.L. #4141) 1/2 HR. REQUIRED)
- 8 1 HR. FIRE-RATED SEPARATION WALLS (U.L. #4141) 1/2 HR. REQUIRED)
- 9 1 HR. FIRE-RATED SEPARATION WALLS (U.L. #4141)

NOTES (STAIRWELL):

- 10 PROVIDE IDENTIFICATION SIGNAGE PER ADA/AG SECTION 4.3.11.5 & IBC SECTION 1022.4.1
- 11 RETURN HANDRAIL TO WALL (TYP.)
- 12 CONTINUOUS HANDRAILS (TYP.)
- 13 ENCLOSED STANDPIPE
- 14 2" WIDE NON-SLIP TREAD NOSING WITH CONTRASTING COLOR. TYPICAL AT ALL NOSINGS

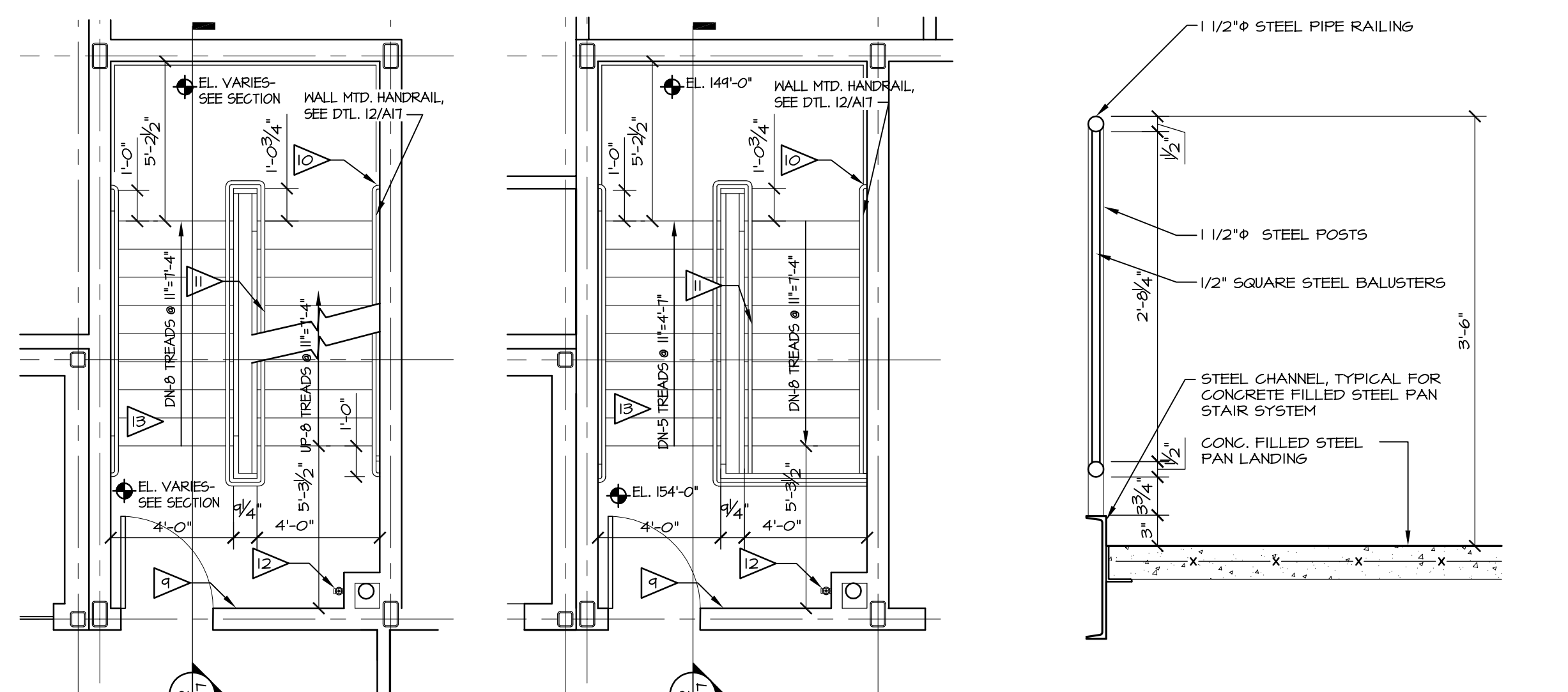


12 STAIR HANDRAIL DETAIL
1/2" = 1'-0"



1 SECTION @ STAIR A
1/4" = 1'-0"

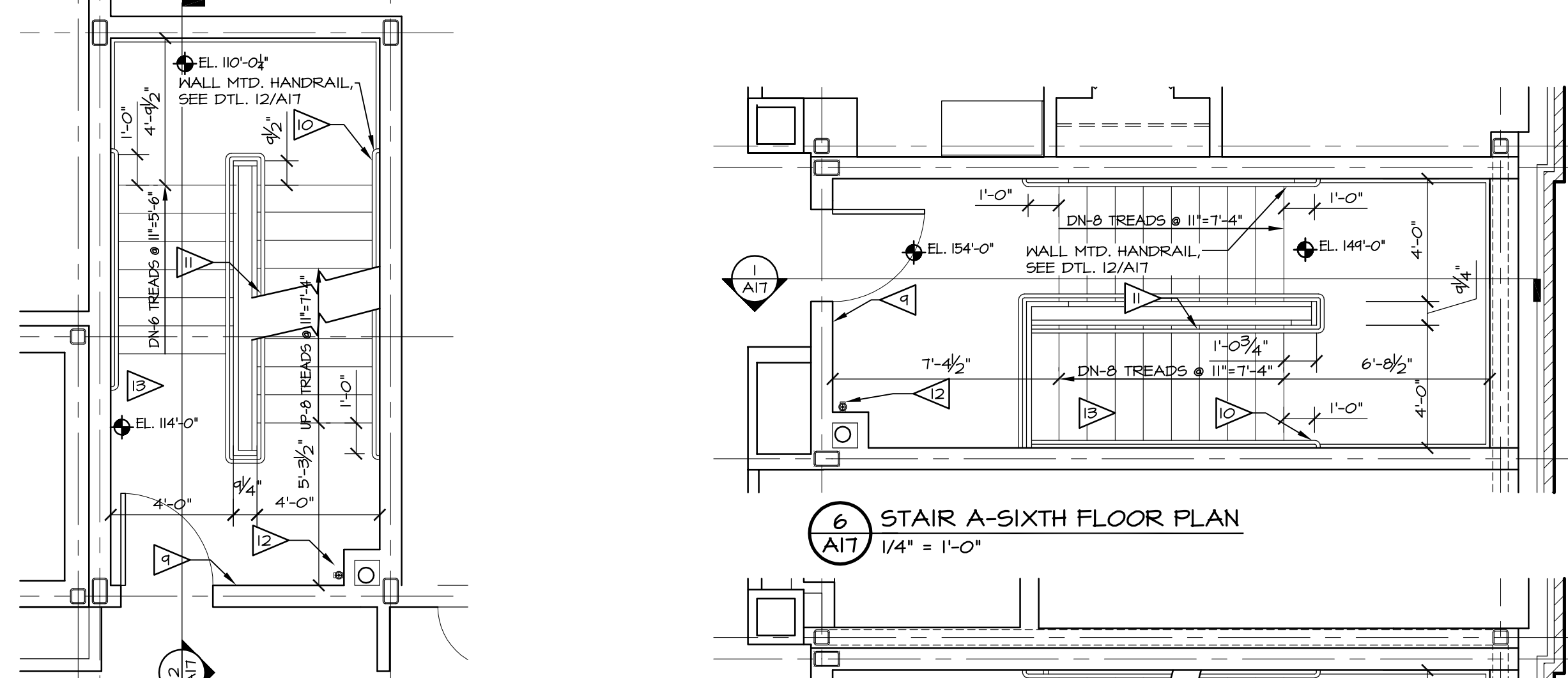
2 SECTION @ STAIR B
1/4" = 1'-0"



9 STAIR B-THIRD/FOURTH/FIFTH FLOOR PLANS
1/4" = 1'-0"

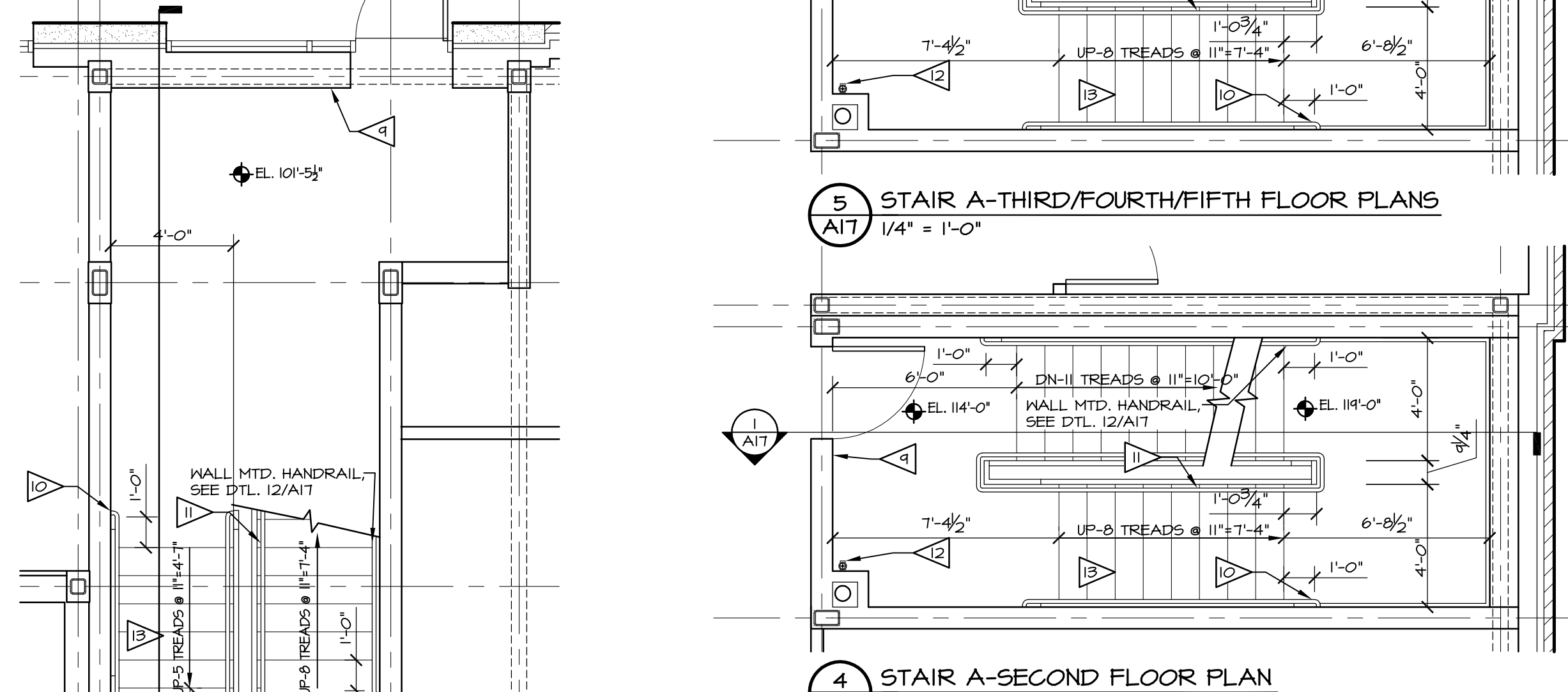
10 STAIR B-SIXTH FLOOR PLAN
1/4" = 1'-0"

11 STAIR-SECTION @ TOP LANDING
1" = 1'-0"



8 STAIR B-SECOND FLOOR PLAN
1/4" = 1'-0"

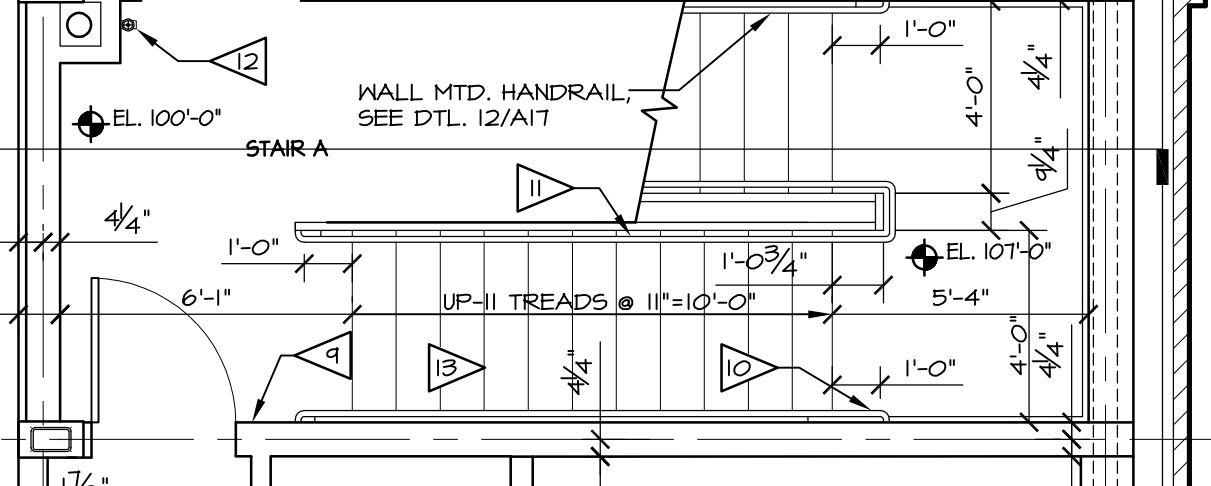
6 STAIR A-SIXTH FLOOR PLAN
1/4" = 1'-0"



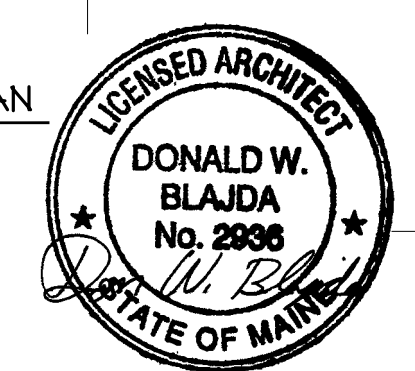
7 STAIR B-FIRST FLOOR PLAN
1/4" = 1'-0"

5 STAIR A-THIRD/FOURTH/FIFTH FLOOR PLANS
1/4" = 1'-0"

4 STAIR A-SECOND FLOOR PLAN
1/4" = 1'-0"



3 STAIR A-FIRST FLOOR PLAN
1/4" = 1'-0"



| REVISION SCHEDULE | REVISION DESCRIPTION | DATE |
|-------------------|----------------------|------|
| | | |
| | | |
| | | |

LOPECHEE
CONSTRUCTION CORPORATION
11 CORPORATE DRIVE, BELMONT NH 03220
PHONE (603) 527-9050 FAX (603) 527-9191

STAIR SECTIONS & DETAILS

PROJECT: **COMMERCIAL & MAPLE STREET**
MIXED USE DEVELOPMENT
PORTLAND, ME

DATE: 05-09-13
SCALE: SEE PLAN
DRAWN BY: KPH

A17
SHEET: