

WHERE THE CAVITY WIDTH EXCEEDS 4", THE A.I. 550 CODE REQUIRES A DETAILED WALL TIE ANALYSIS TO DETERMINE PROPER ANCHOR SPACING. MASONRY CONTRACTOR TO PROVIDE ANALYSIS WITH MASONRY ANCHOR SUBMITTAL FOR REVIEW.

GRANITE VENEER WITH HOT-DIPPED GALV. 2-PIECE ADJUSTABLE TIES AT 24" O.C. HORIZ. AND 16" O.C. VERT. SECURELY ATTACHED TO METAL STUDS THROUGH INSULATION AND SHEATHING

AIR SPACE

1" CONTINUOUS RIGID POLYSTYRENE INSULATION BOARD

WEATHER-RESISTANT BARRIER W/ TERMINATION MASTIC AT ALL LAPS, SEAMS, TOP EDGES, CUTS & PENETRATIONS

5/8" DENS-GLASS SHEATHING OR EQUAL

CONT. MORTAR NET

PROVIDE CONTINUOUS SUPPORT FOR THROUGH-WALL FLASHING-MIN. 15 DEG. SLOPE

EXTEND S.S. FLASHING TO 3/8" BEYOND FACE OF GRANITE BELOW

4 SECTION DETAIL
A16 1" = 1'-0"

SEE DTL. 2/A16 FOR TYPICAL WALL CONST.

WRAP STEEL SUPPORTS WITH SAF TO PROVIDE WATERTIGHT SEAL BACK TO FACE OF WRB

PROVIDE CONTINUOUS SUPPORT FOR THROUGH-WALL FLASHING-MIN. 15 DEG. SLOPE

EXTEND S.S. FLASHING TO 3/8" BEYOND FACE OF GRANITE BELOW

3 SECTION DETAIL
A16 1" = 1'-0"

GRANITE WITH HOT-DIPPED GALV. 2-PIECE ADJUSTABLE TIES AT 24" O.C. HORIZ. AND 16" O.C. VERT. SECURELY ATTACHED TO METAL STUDS THROUGH INSULATION AND SHEATHING

AIR SPACE

1" CONTINUOUS RIGID POLYSTYRENE INSULATION BOARD

WEATHER-RESISTANT BARRIER W/ TERMINATION MASTIC AT ALL LAPS, SEAMS, TOP EDGES, CUTS & PENETRATIONS

5/8" DENS-GLASS SHEATHING OR EQUAL

WRAP STEEL SUPPORTS WITH SAF TO PROVIDE WATERTIGHT SEAL BACK TO FACE OF WRB

CONT. MORTAR NET

2 SECTION DETAIL
A16 1" = 1'-0"

FLEXIBLE SELF-ADHERING FLASHING W/ STAINLESS STEEL DRIP EDGE. RUN FLASHING UP MIN. 6" ABOVE MORTAR NET

KEEP BAFFLES @ 16" O.C.

APPLY SAF OVER RECEIVER FLASHING

S.S. TWO-PIECE COUNTERFLASHING STYLE D BY B4B SHEET METAL OR EQUAL

ROOFING MFR'S. STANDARD TERMINATION BAR DETAIL

FULLY ADHERE MEMBRANE TO WALL

MEMBRANE MFR'S. STANDARD WALL/ROOF FLASHING DETAIL

1 SECTION DETAIL
A16 1" = 1'-0"

FLEXIBLE SELF-ADHERING FLASHING W/ STAINLESS STEEL DRIP EDGE.

APPLY SAF OVER RECEIVER FLASHING

S.S. TWO-PIECE COUNTERFLASHING STYLE D BY B4B SHEET METAL OR EQUAL

ROOFING MFR'S. STANDARD TERMINATION BAR DETAIL

FULLY ADHERE MEMBRANE TO WALL

MEMBRANE MFR'S. STANDARD WALL/ROOF FLASHING DETAIL

MEMBRANE ROOFING, INSULATION BD. ON METAL DECK AND LT. GAUGE FRAMING. SEE STRL. DWGS. FOR FRAMING.

3/8" GYP. BD. ON METAL FURRING STRIPS AT 24" O.C.

5/8" GYP. BD. ON 3/8" MTL. STUDS @ 24" O.C.

3/8" DENS GLASS AT ROOF LEVEL

4 MIL POLY VAPOR BARRIER

R-11 FIBERGLASS BATT INSULATION

8" EXT. GYP. BD. SHEATHING

7 SECTION DETAIL
A16 1" = 1'-0"

FACE BRICK WITH HOT-DIPPED GALV. 2-PIECE ADJUSTABLE TIES AT 24" O.C. HORIZ. AND 16" O.C. VERT. SECURELY ATTACHED TO METAL STUDS THROUGH INSULATION AND SHEATHING

AIR SPACE

1" CONTINUOUS RIGID POLYSTYRENE INSULATION BOARD

WEATHER-RESISTANT BARRIER W/ TERMINATION MASTIC AT ALL LAPS, SEAMS, TOP EDGES, CUTS & PENETRATIONS

5/8" DENS-GLASS SHEATHING OR EQUAL

6 SECTION DETAIL
A16 1" = 1'-0"

FACE BRICK WITH HOT-DIPPED GALV. 2-PIECE ADJUSTABLE TIES AT 24" O.C. HORIZ. AND 16" O.C. VERT. SECURELY ATTACHED TO METAL STUDS THROUGH INSULATION AND SHEATHING

AIR SPACE

1" CONTINUOUS RIGID POLYSTYRENE INSULATION BOARD

WEATHER-RESISTANT BARRIER W/ TERMINATION MASTIC AT ALL LAPS, SEAMS, TOP EDGES, CUTS & PENETRATIONS

5/8" DENS-GLASS SHEATHING OR EQUAL

5 SECTION DETAIL
A16 1" = 1'-0"

WRAP STEEL SUPPORTS WITH SAF TO PROVIDE WATERTIGHT SEAL BACK TO FACE OF WRB

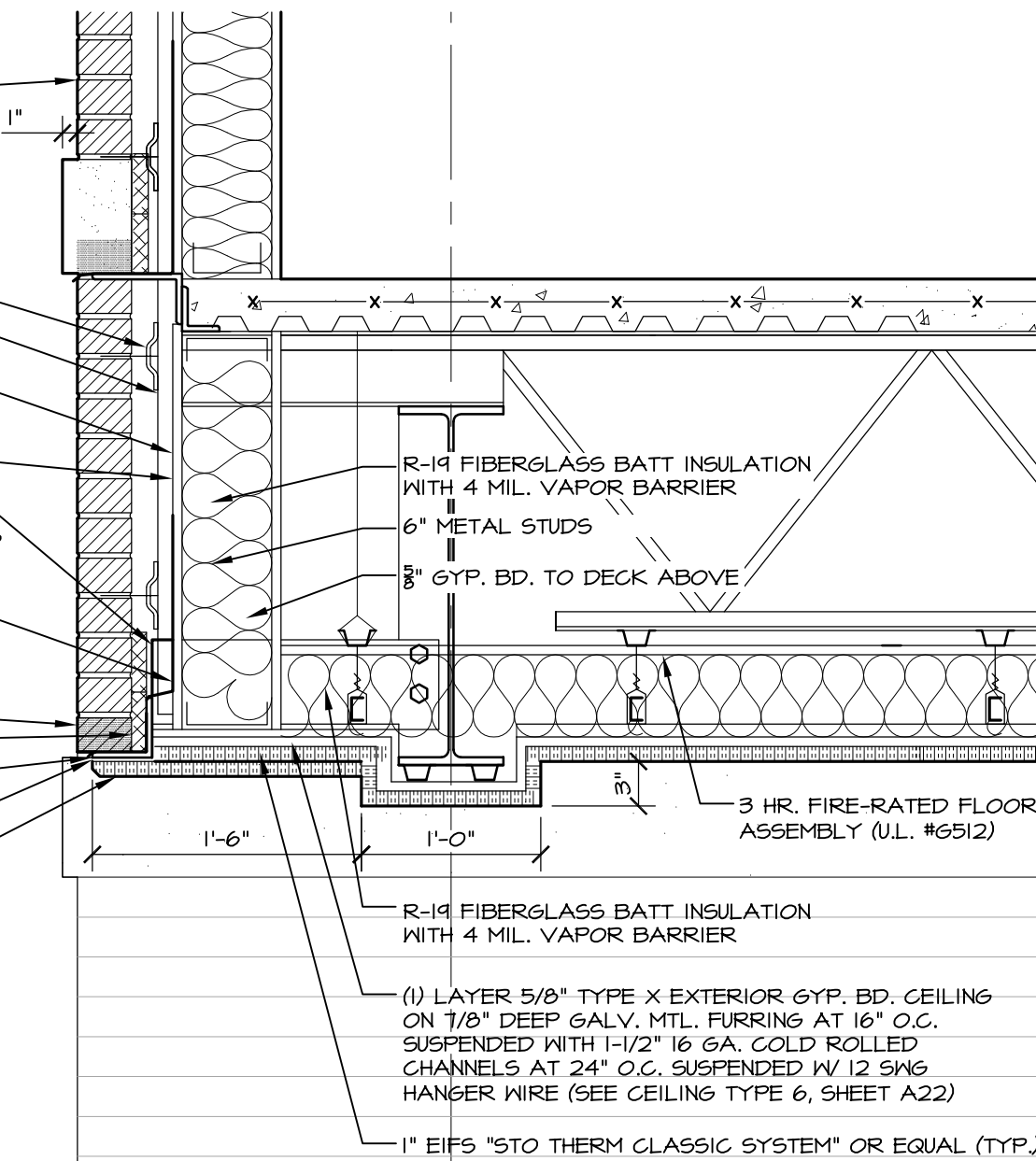
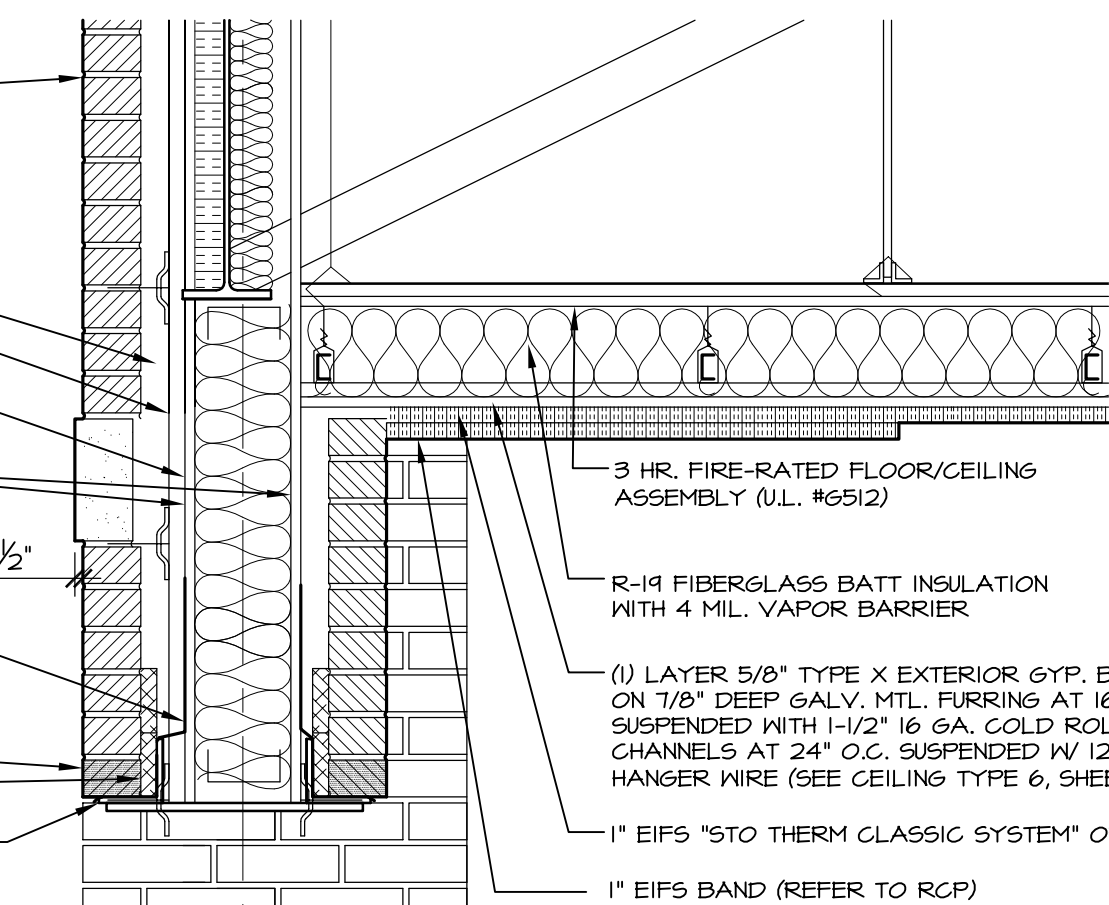
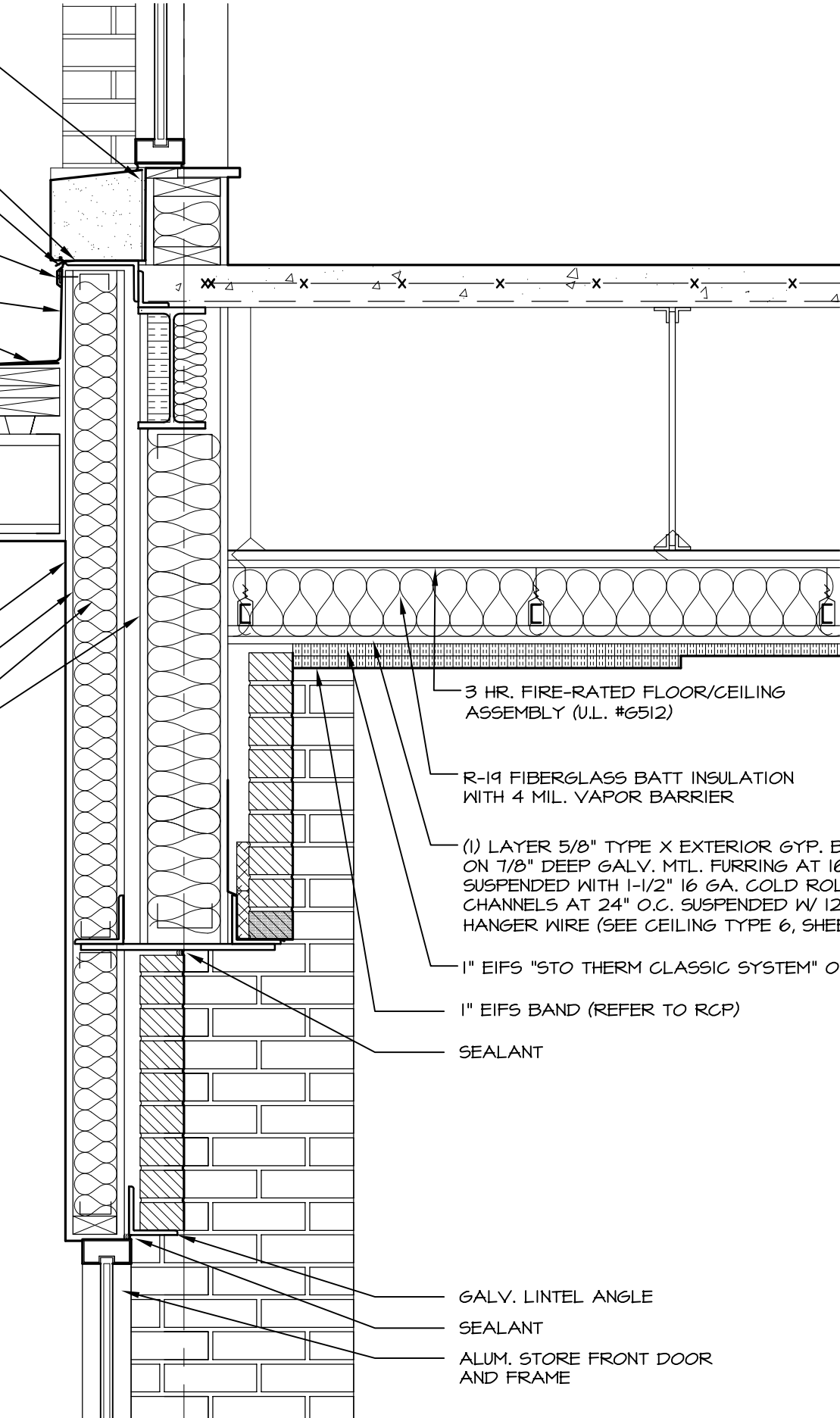
KEEP BAFFLES @ 16" O.C.

MORTAR NET

GALV. STEEL ANGLE LINTEL SEE STRUCTURAL DWGS.

PERIMETER CAULKING (TYP.)

1" EIFS BAND (REFER TO RCP)

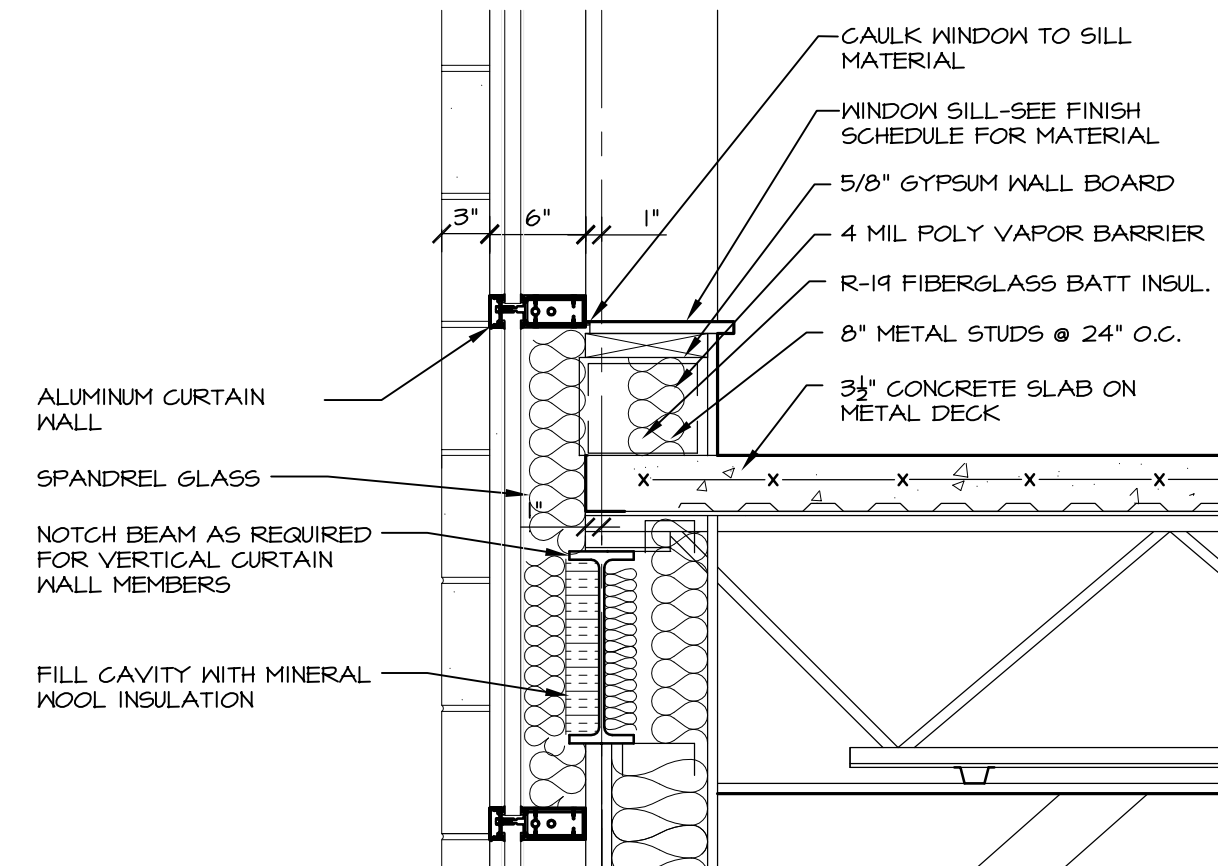


GRANITE MASONRY

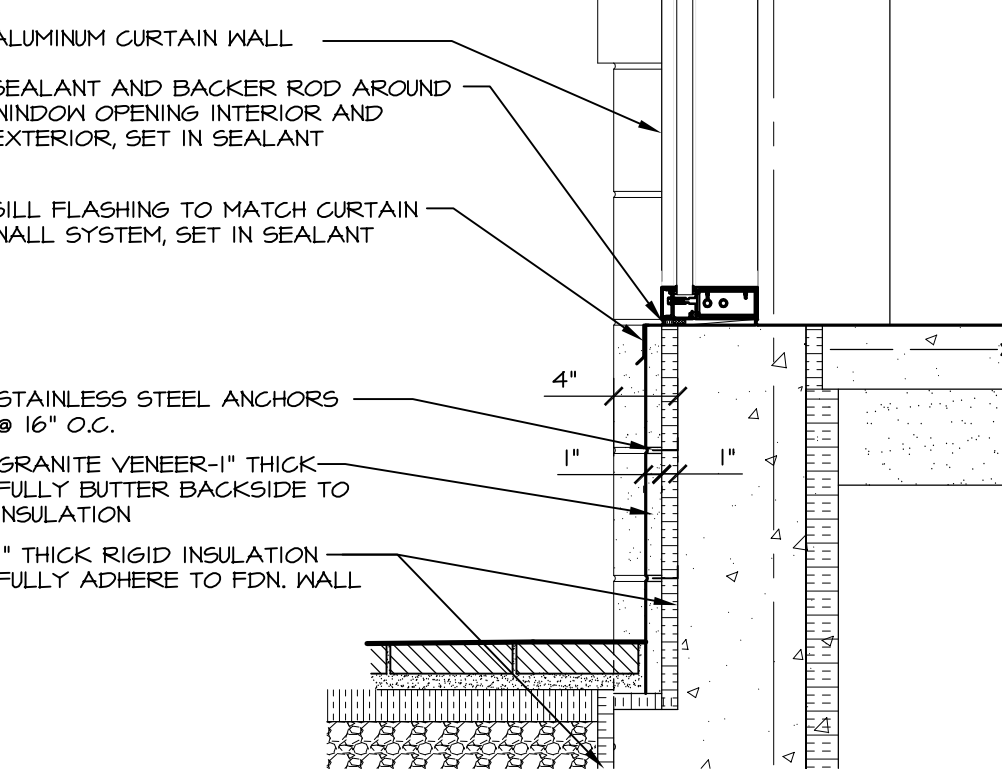
MORTAR JOINT TOOLED TO WEATHERED JOINT

SECOND FLOOR LEVEL

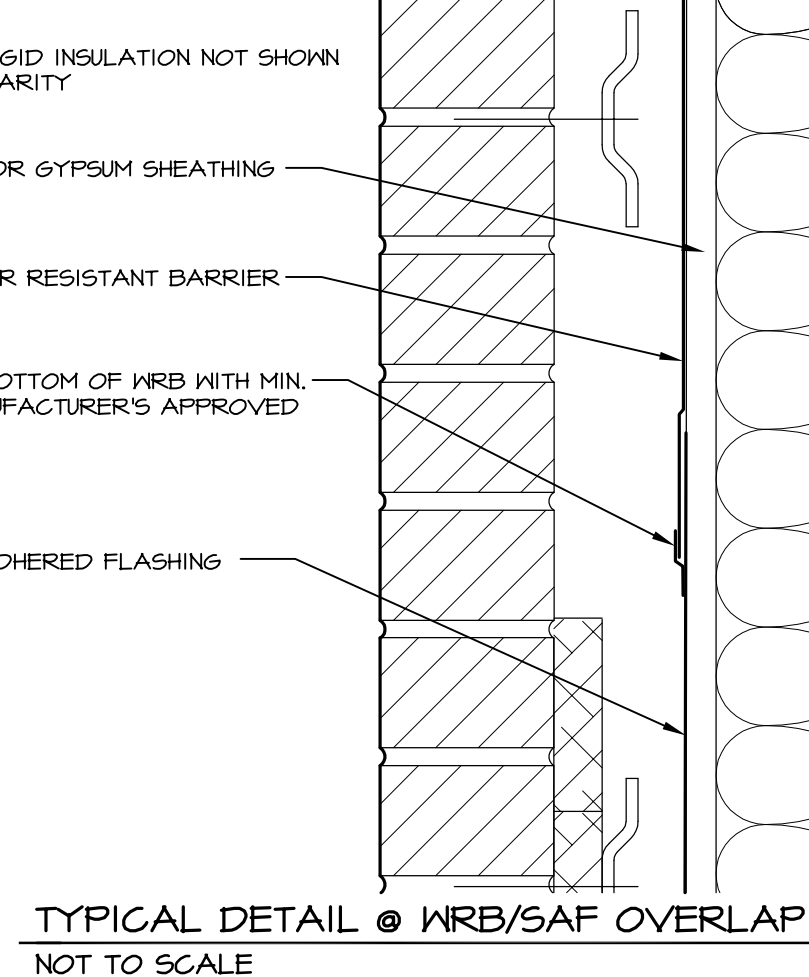
10 SECTION DETAIL
A16 1 1/2" = 1'-0"



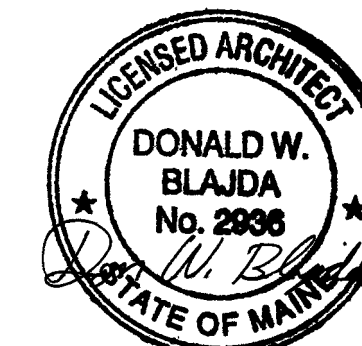
9 SECTION DETAIL
A16 1" = 1'-0"



8 SECTION DETAIL
A16 1" = 1'-0"



TYPICAL DETAIL @ WRB/SAF OVERLAP
NOT TO SCALE



DATE	REVISION SCHEDULE
05-22-13	ADDED DTL. 10/A16. REVISED DTL5. TO ADD 1/2\"/>
06-03-13	REVISED ALL DETAILS EXCEPT 10/A16.

LOPECHEE
CONSTRUCTION CORPORATION
11 CORPORATE DRIVE, BELMONT, NH 03220
PHONE (603) 527-9050 FAX (603) 527-9191

SECTION DETAILS

PROJECT: COMMERCIAL & MAPLE STREET
MIXED USE DEVELOPMENT
PORTLAND, ME

DATE: 05-04-13
SCALE: SEE PLAN
DRAWN BY: KPH
A16
SHEET: