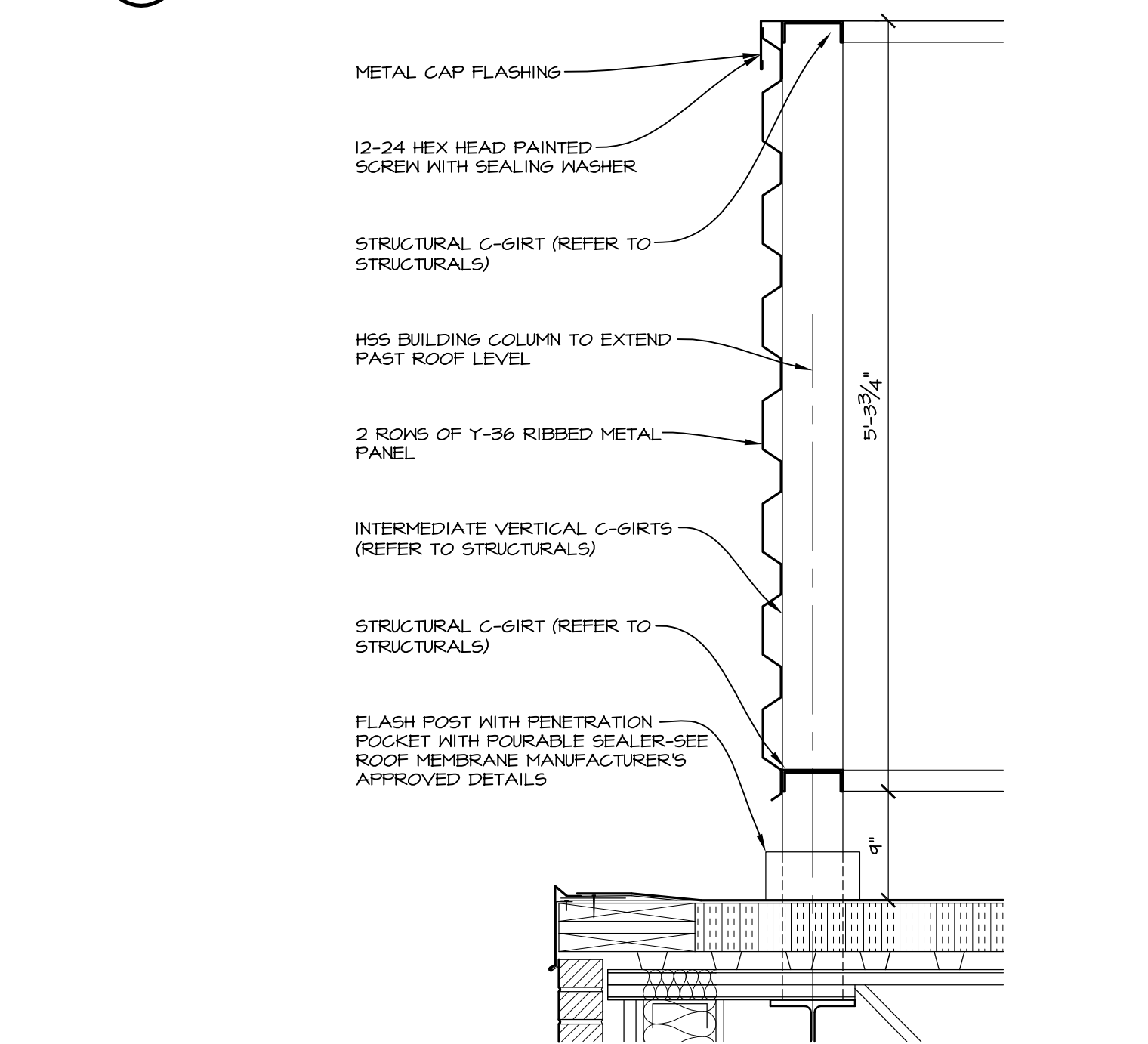
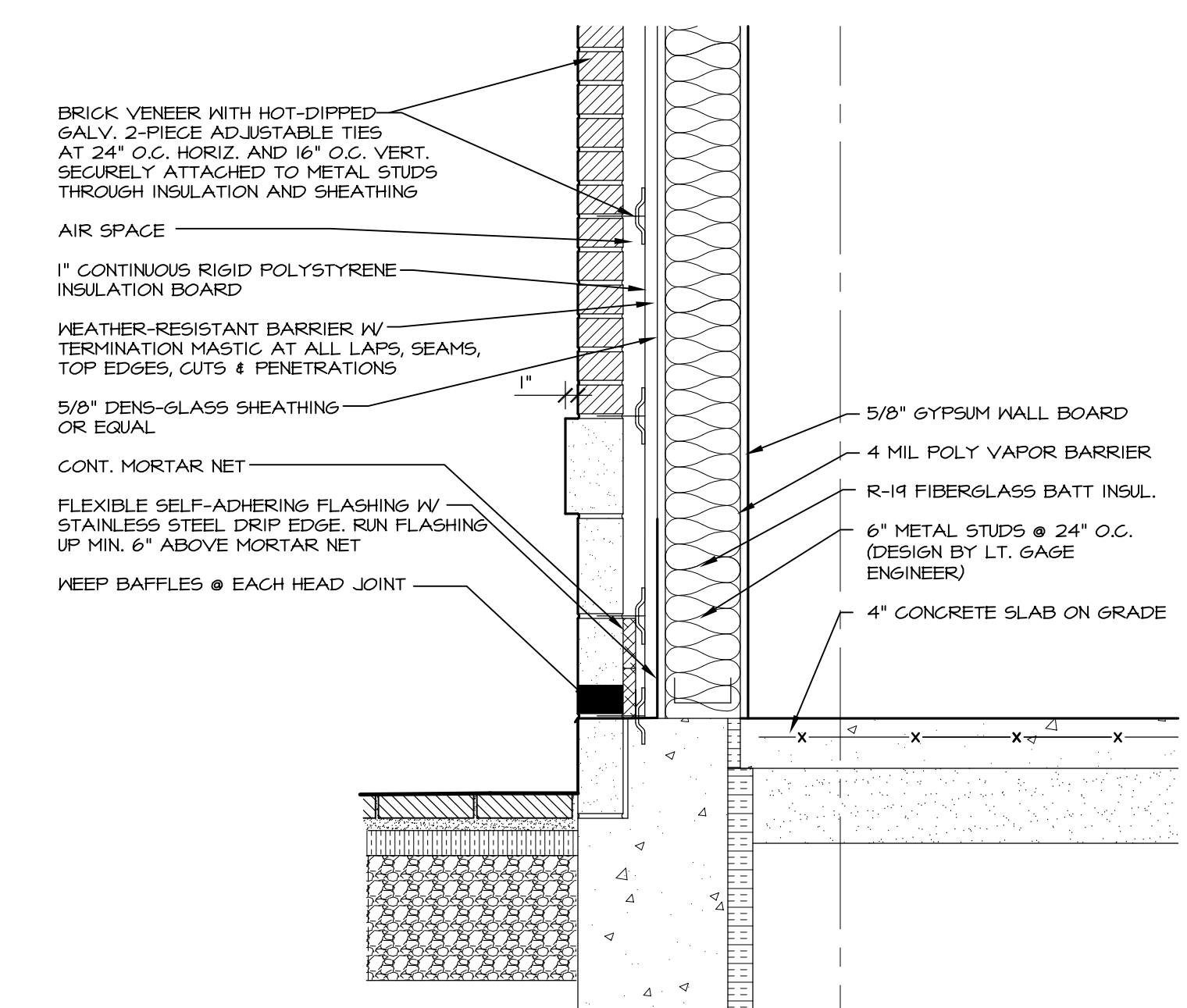


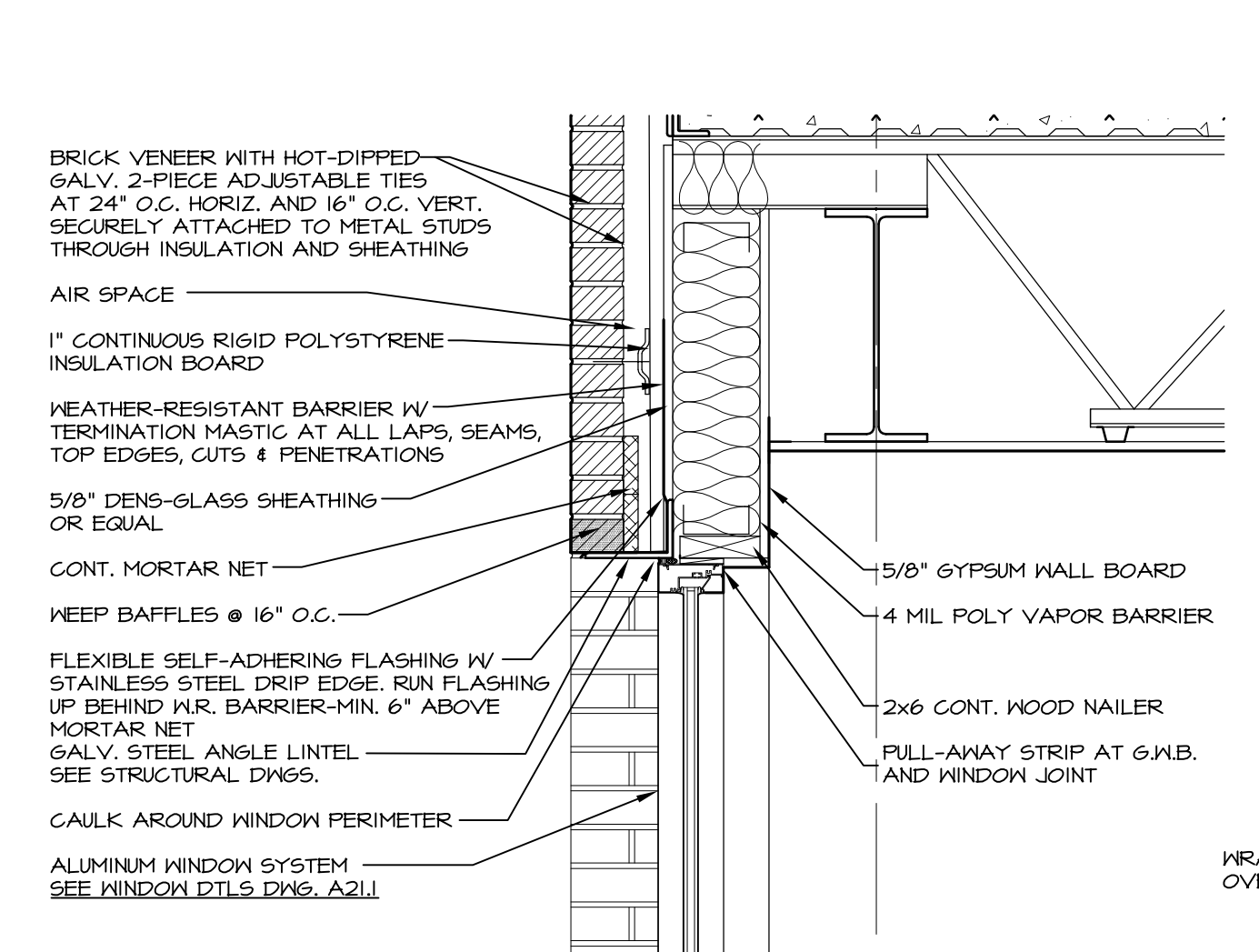
3 SECTION DETAIL  
A15 1" = 1'-0"



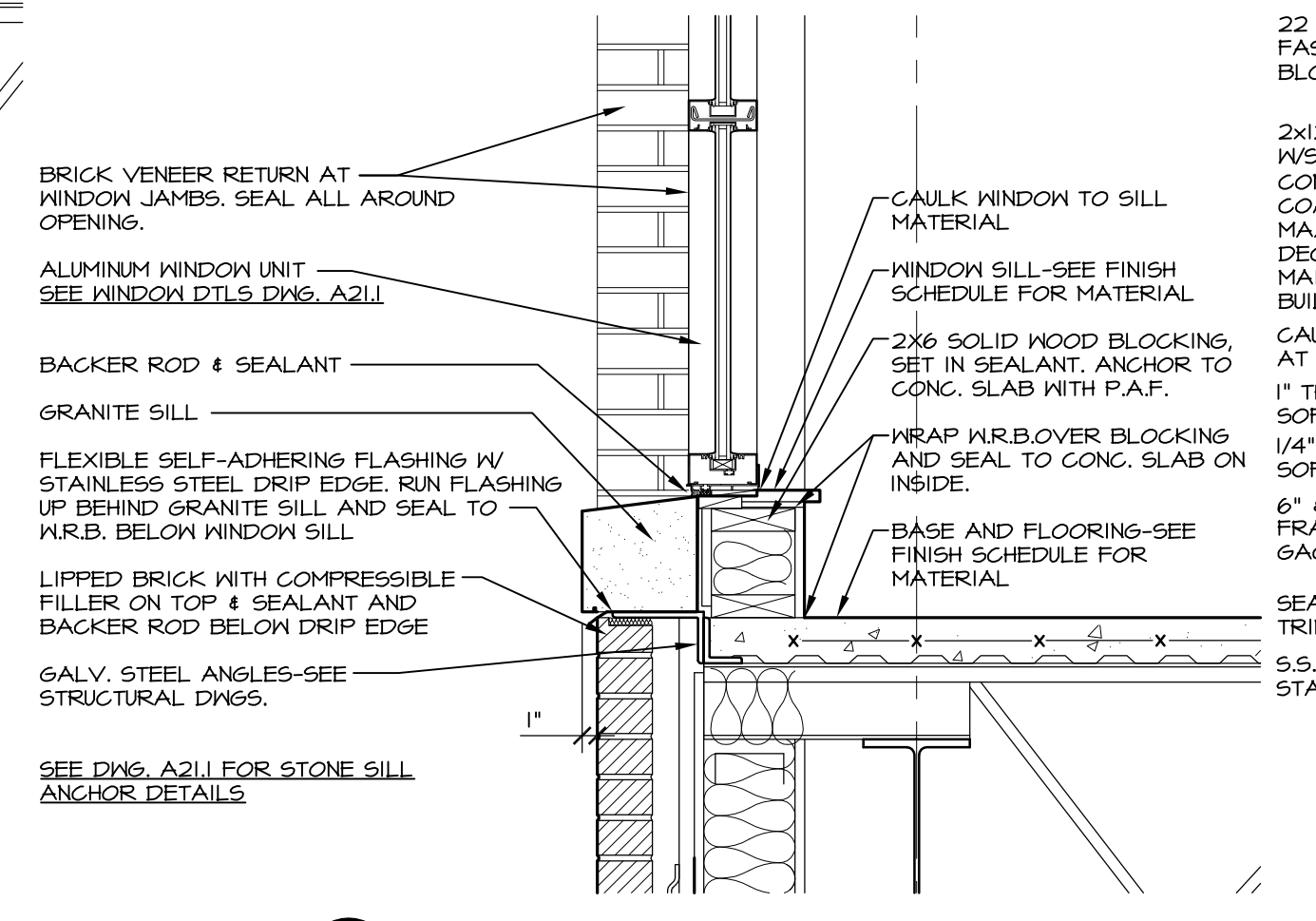
2 SECTION DETAIL  
A15 1" = 1'-0"



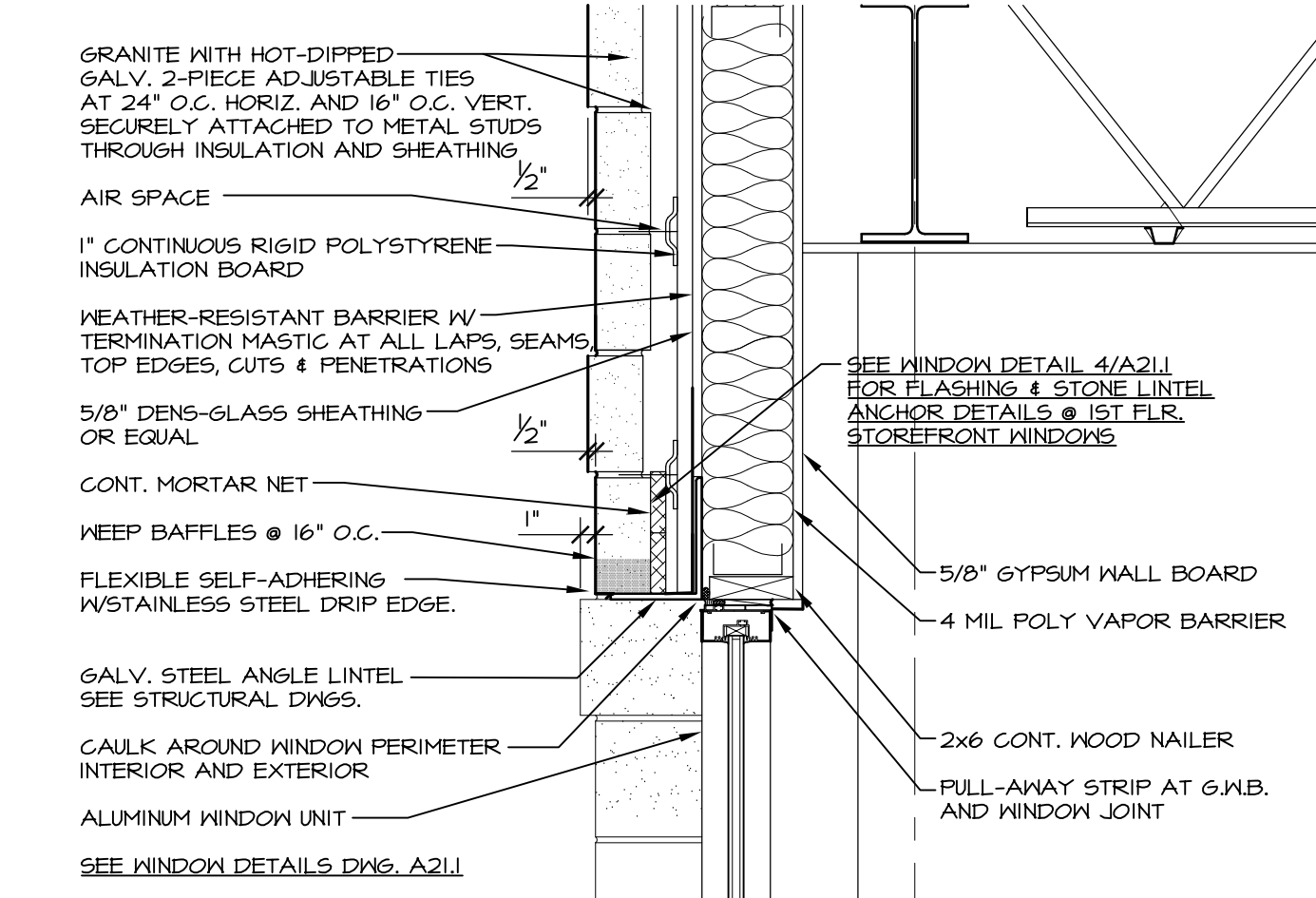
1 SECTION DETAIL  
A15 1" = 1'-0"



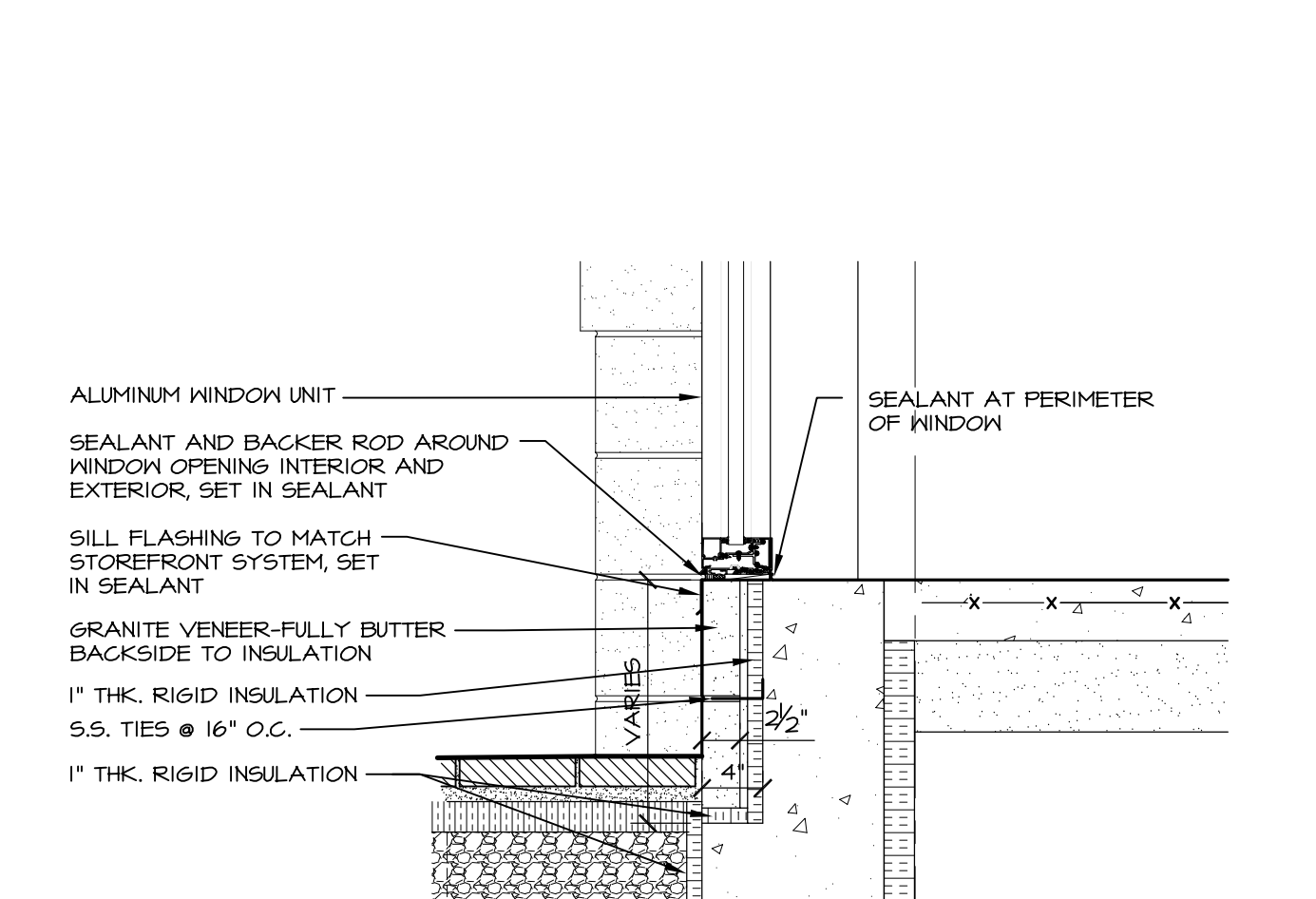
7 SECTION DETAIL  
A15 1" = 1'-0"



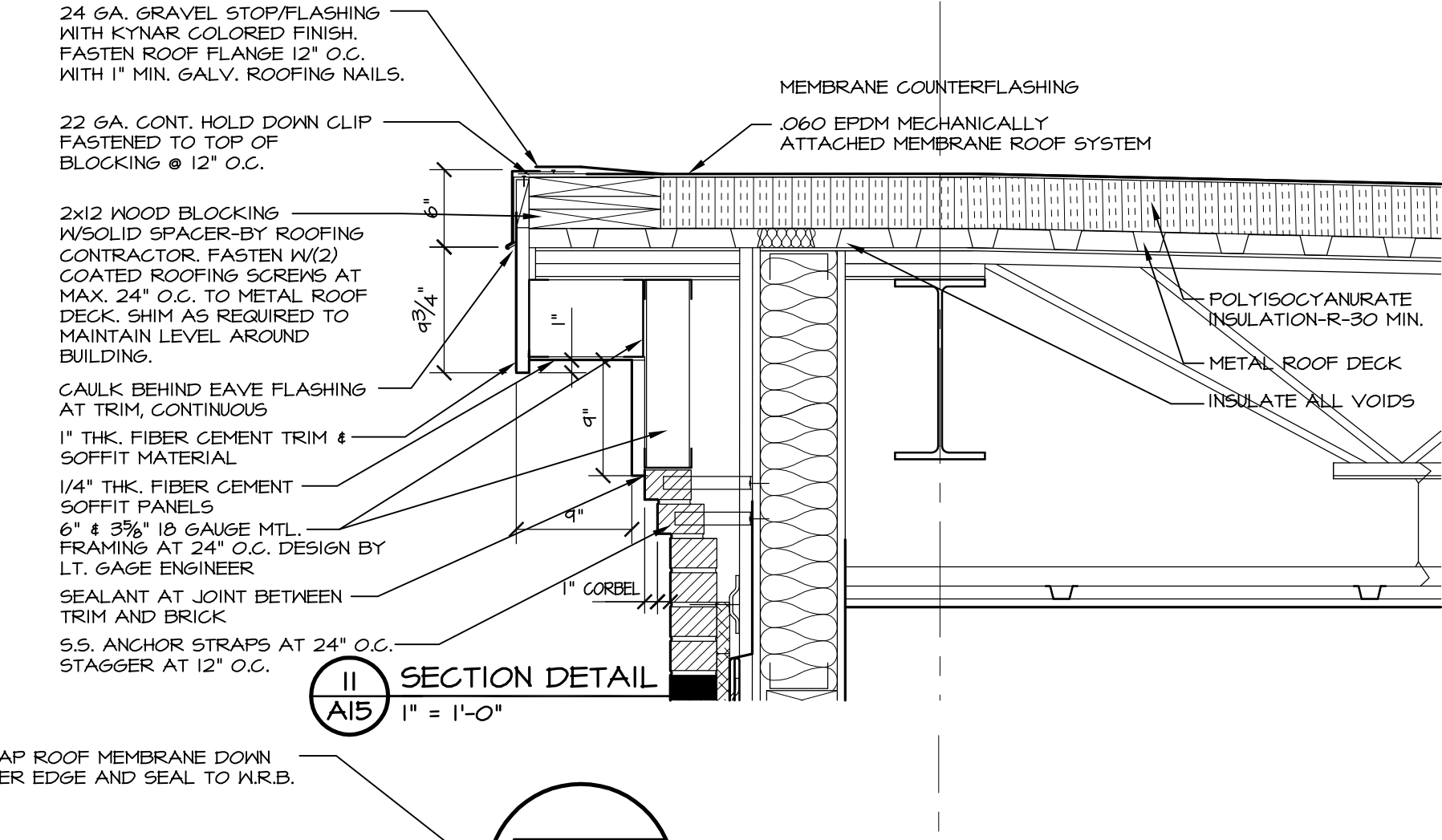
6 SECTION DETAIL  
A15 1" = 1'-0"



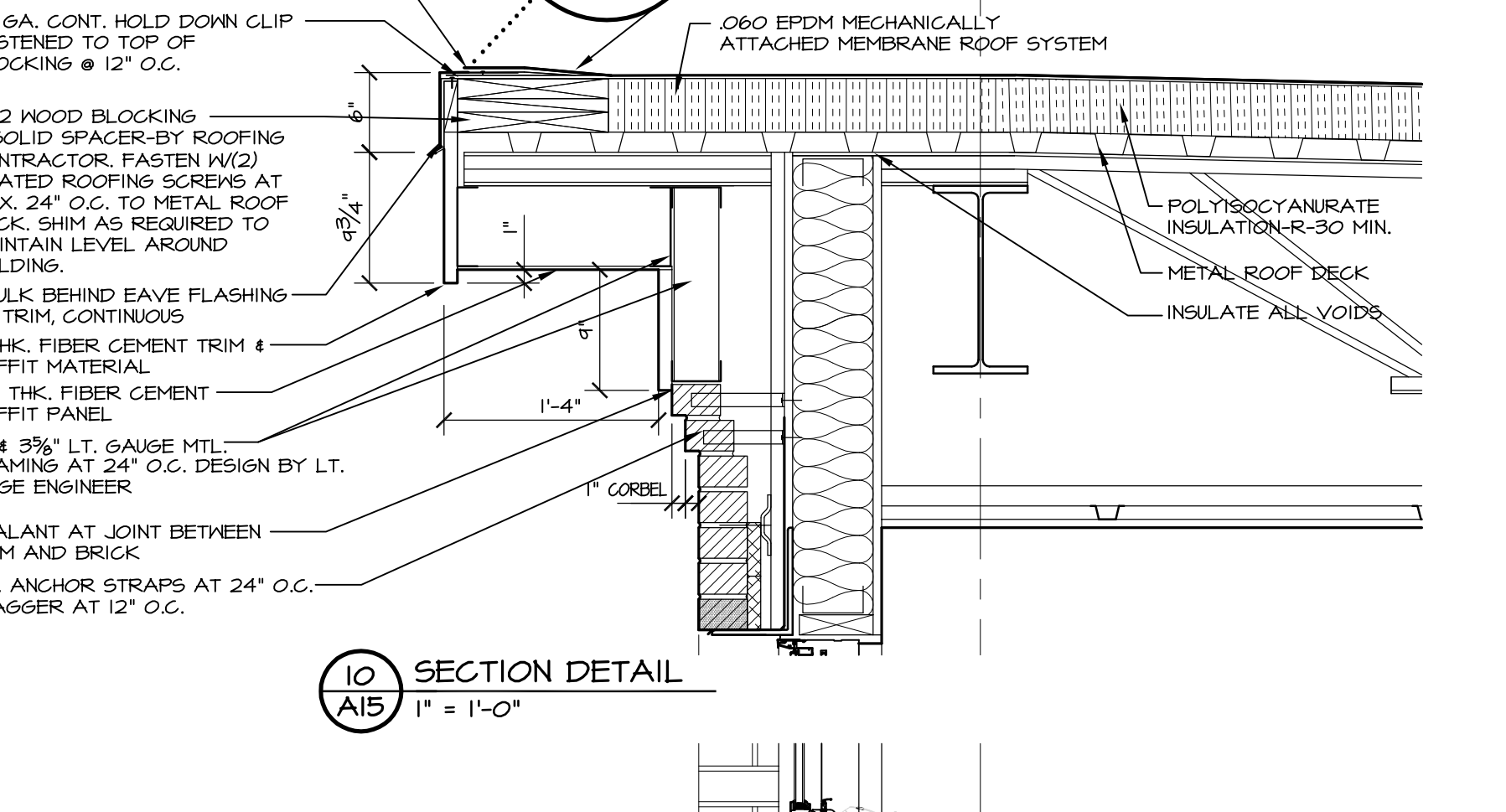
5 SECTION DETAIL  
A15 1" = 1'-0"



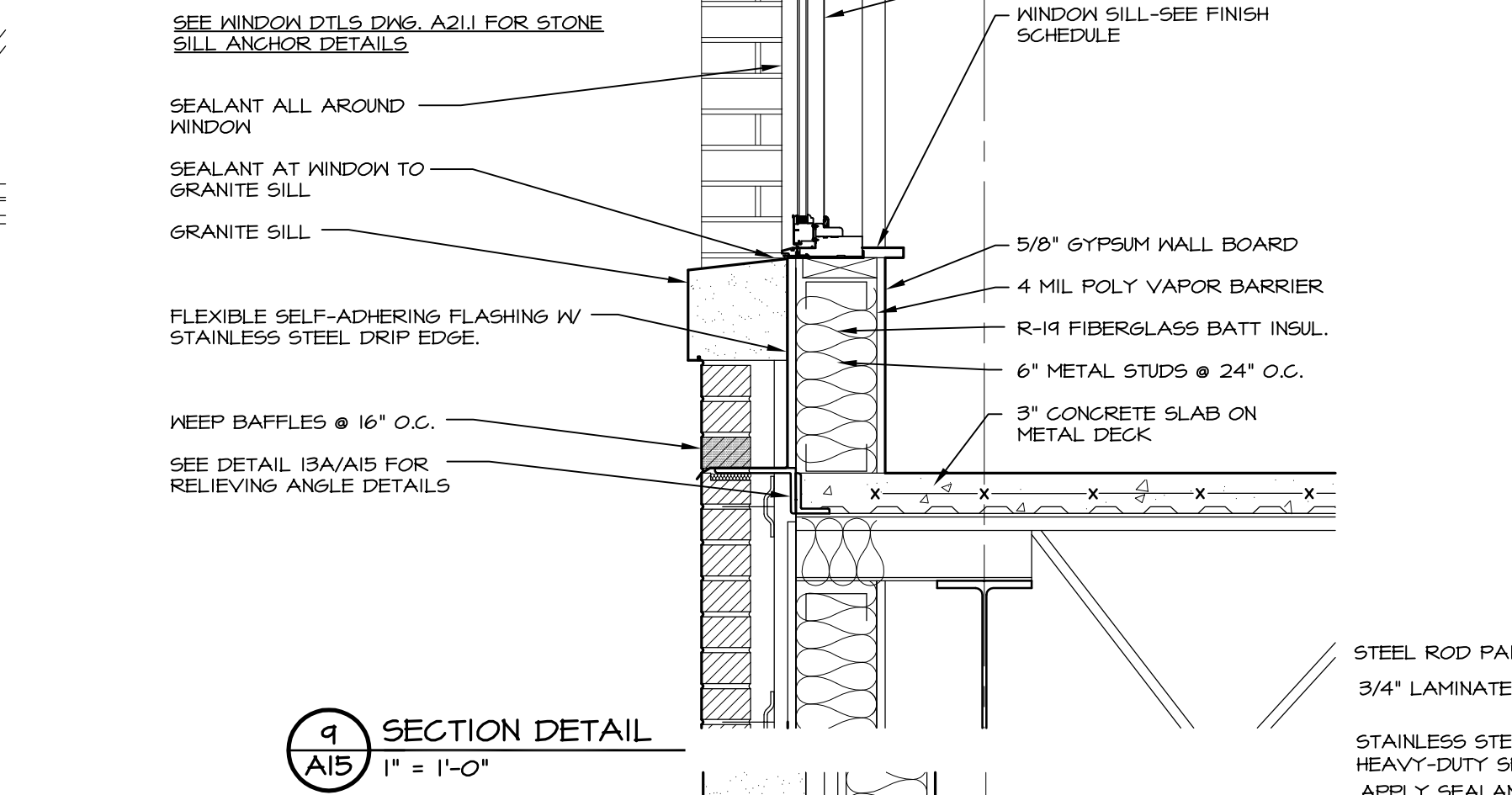
4 SECTION DETAIL  
A15 1" = 1'-0"



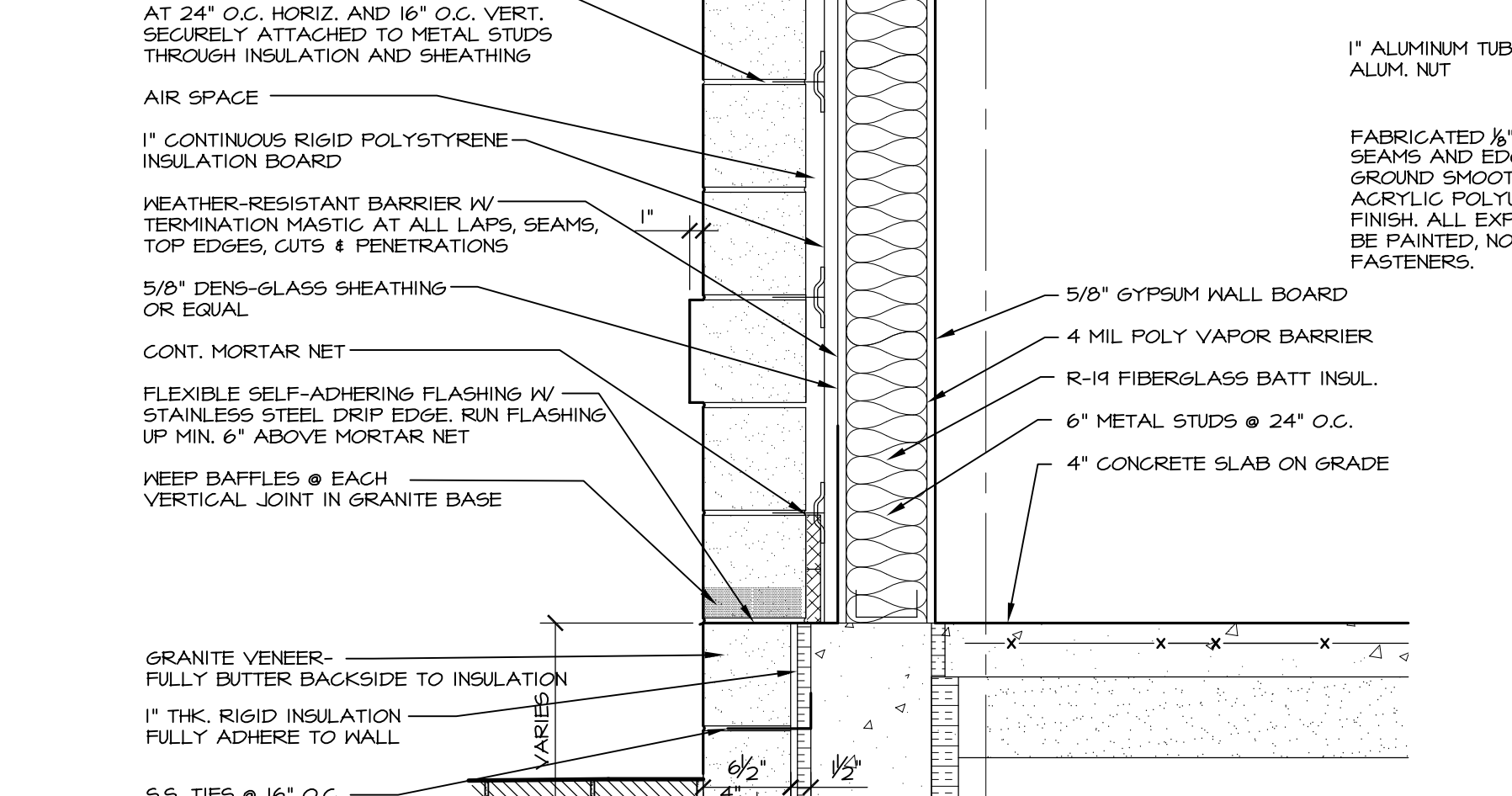
11 SECTION DETAIL  
A15 1" = 1'-0"



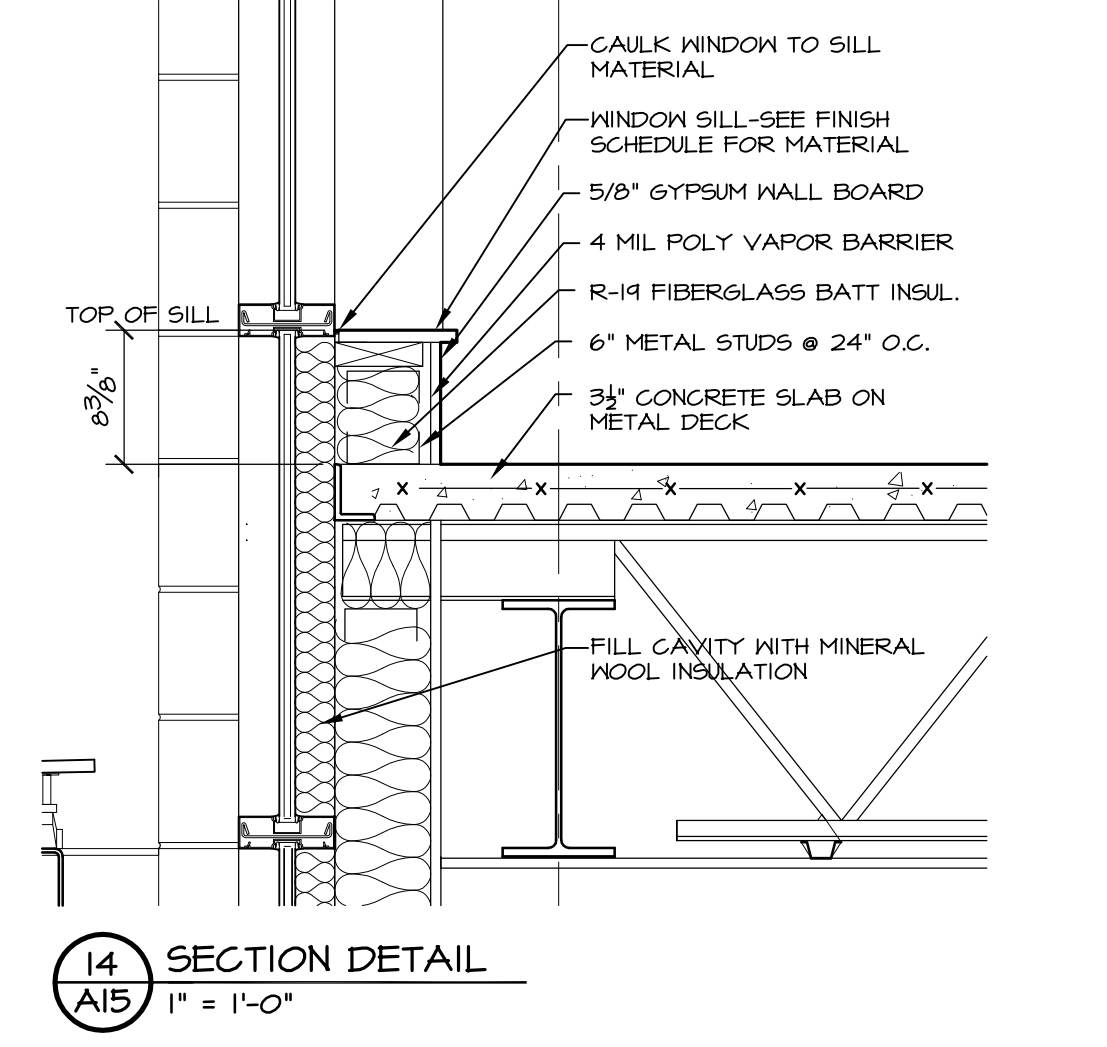
10 SECTION DETAIL  
A15 1" = 1'-0"



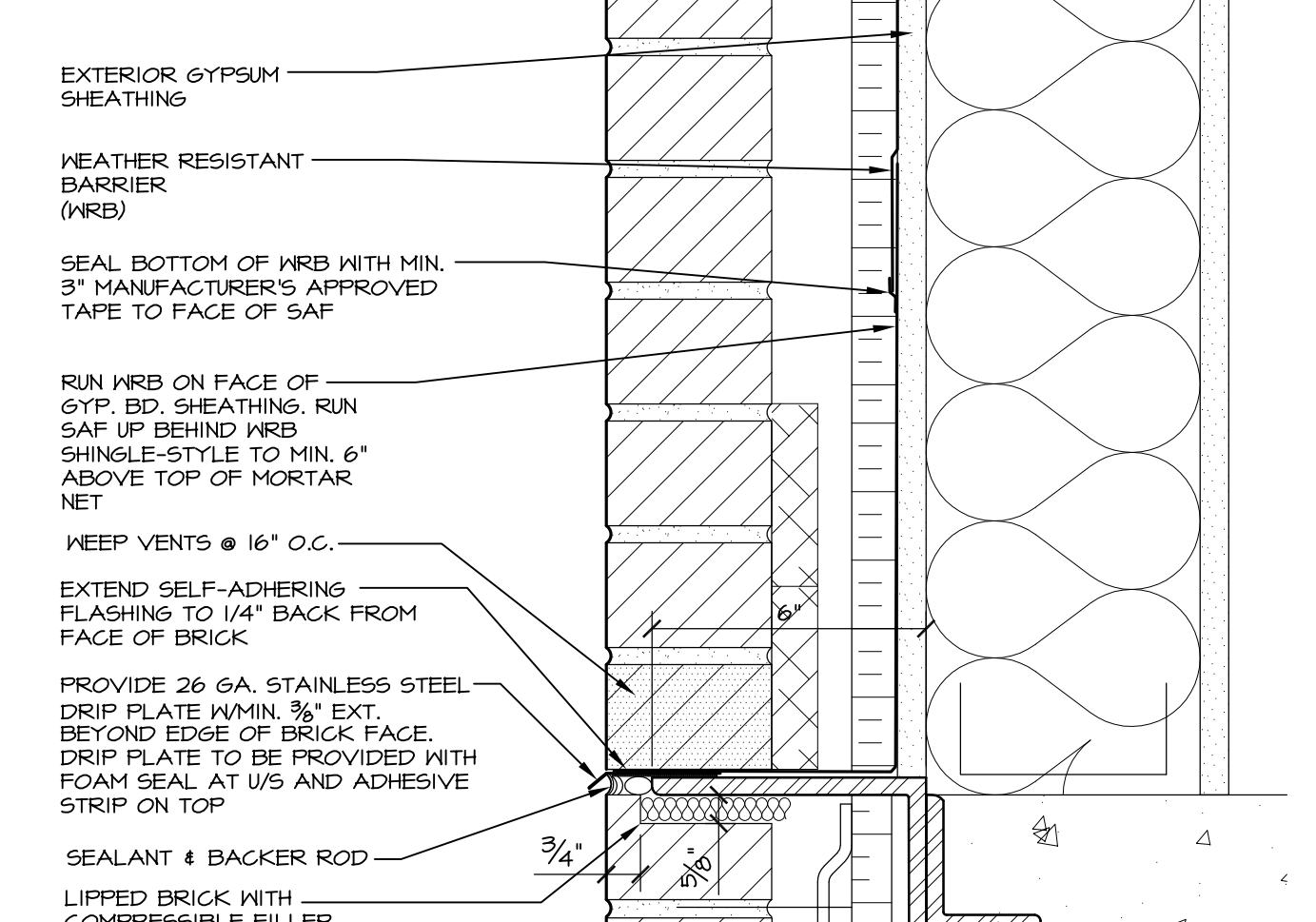
9 SECTION DETAIL  
A15 1" = 1'-0"



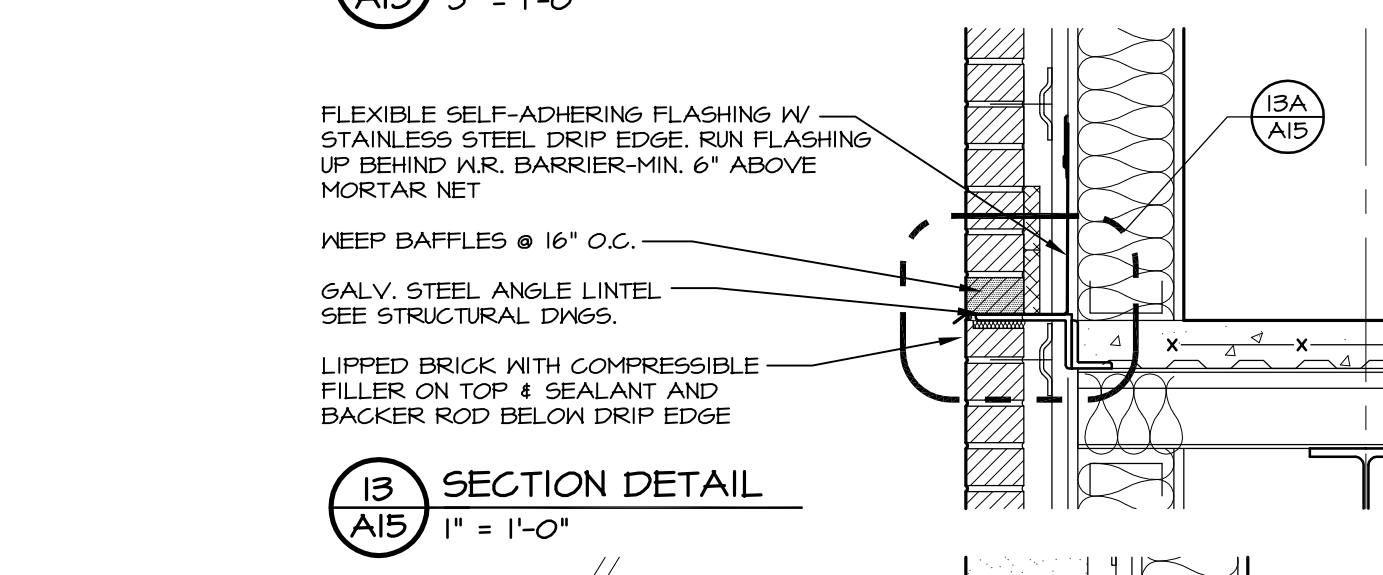
8 SECTION DETAIL  
A15 1" = 1'-0"



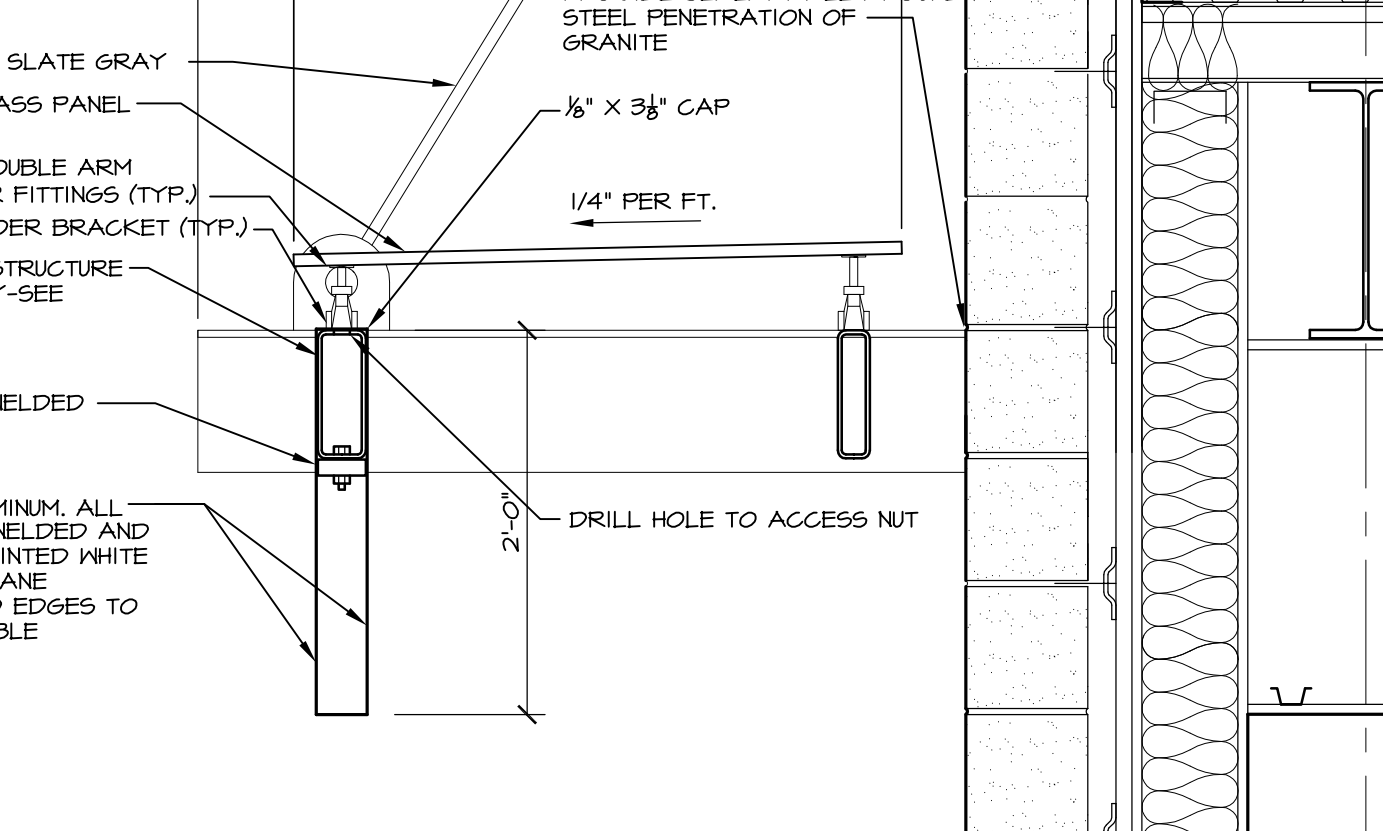
14 SECTION DETAIL  
A15 1" = 1'-0"



13A SECTION DETAIL  
A15 3" = 1'-0"



13 SECTION DETAIL  
A15 1" = 1'-0"



12 SECTION DETAIL  
A15 1" = 1'-0"

| DATE     | REVISION DESCRIPTION                    |
|----------|---|
| 05-20-13 | REVISED DTLS. 10 & 11/A15               |
| 05-28-13 | ADDED DETAIL 13A/A15 AT RELIEVING ANGLE |
| 06-03-13 | REVISED ALL DETAILS                     |

**LOPECHEE**  
CONSTRUCTION CORPORATION  
11 CORPORATE DRIVE, BELMONT, NH 03220  
PHONE (603) 527-9050 FAX (603) 527-9191

SECTION DETAILS

PROJECT: COMMERCIAL & MAPLE STREET MIXED USE DEVELOPMENT PORTLAND, ME

|           |          |
|-----------|----------|
| DATE:     | 05-09-13 |
| SCALE:    | SEE PLAN |
| DRAWN BY: | KPH      |

SHEET: A15

