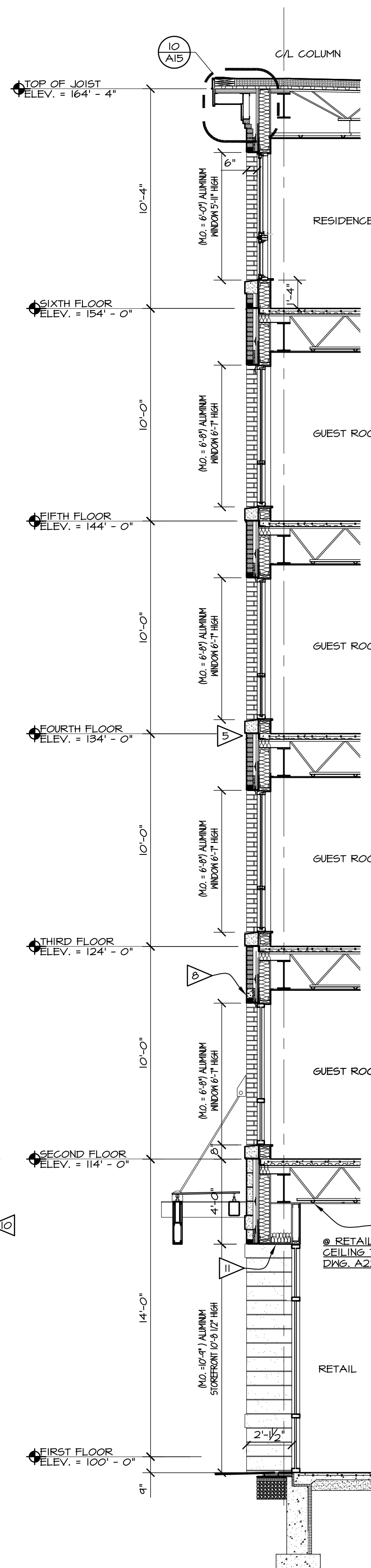


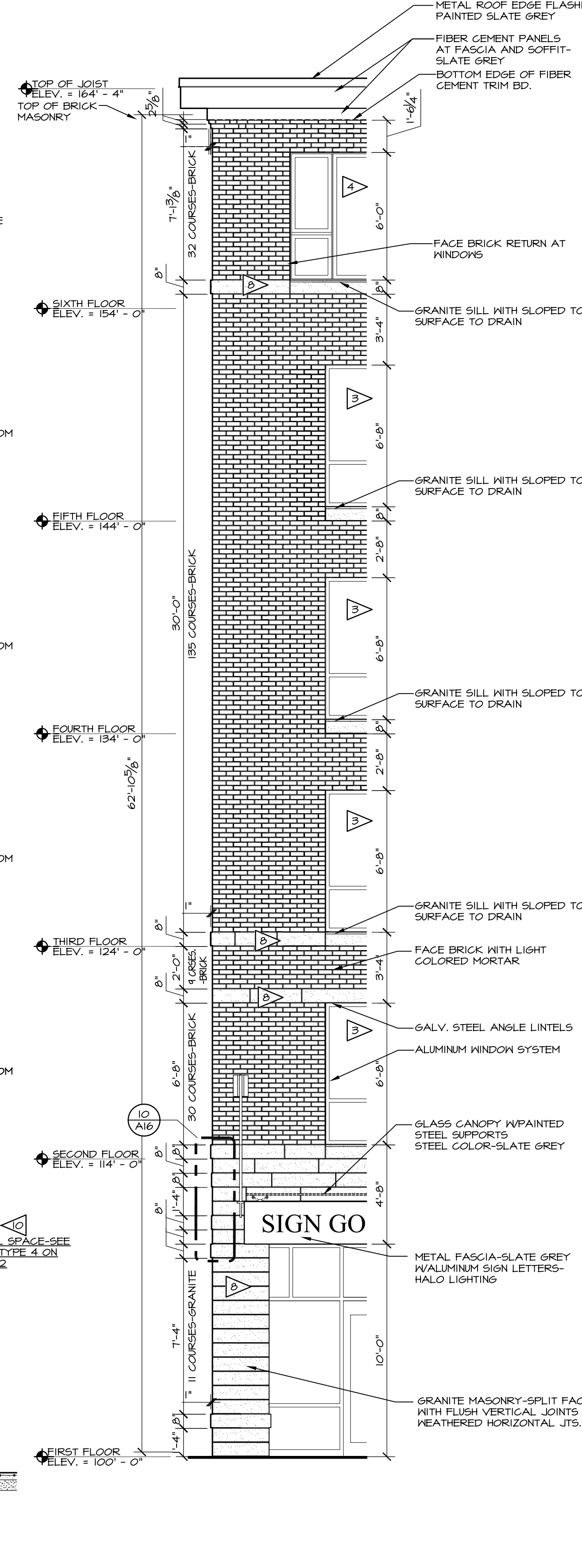
1 WALL SECTION
1/4" = 1'-0"

2 WALL SECTION
1/4" = 1'-0"

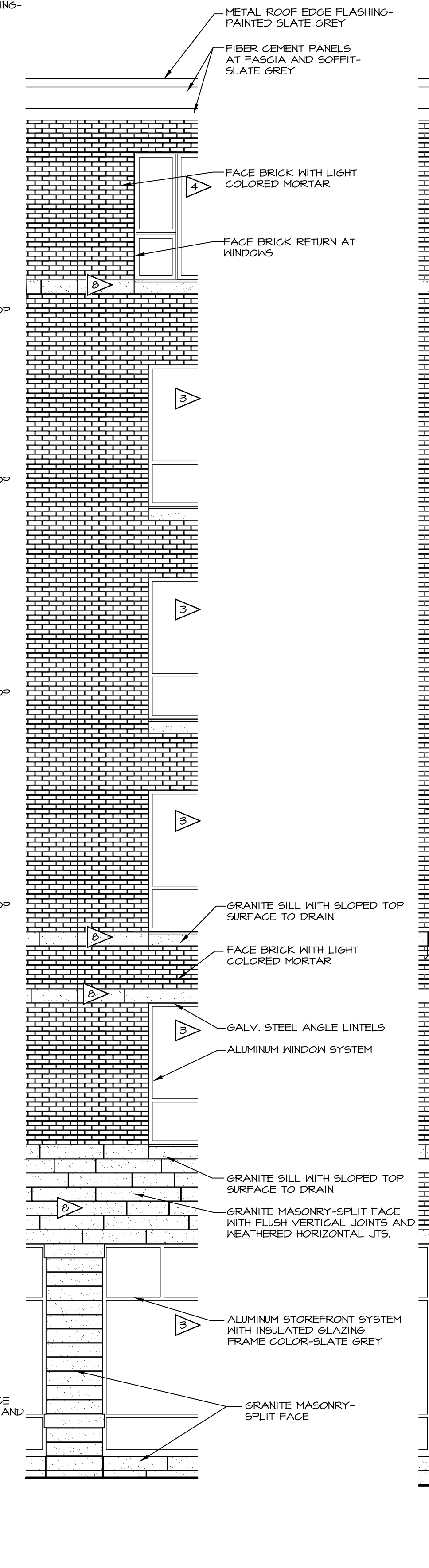
3 WALL SECTION
1/4" = 1'-0"



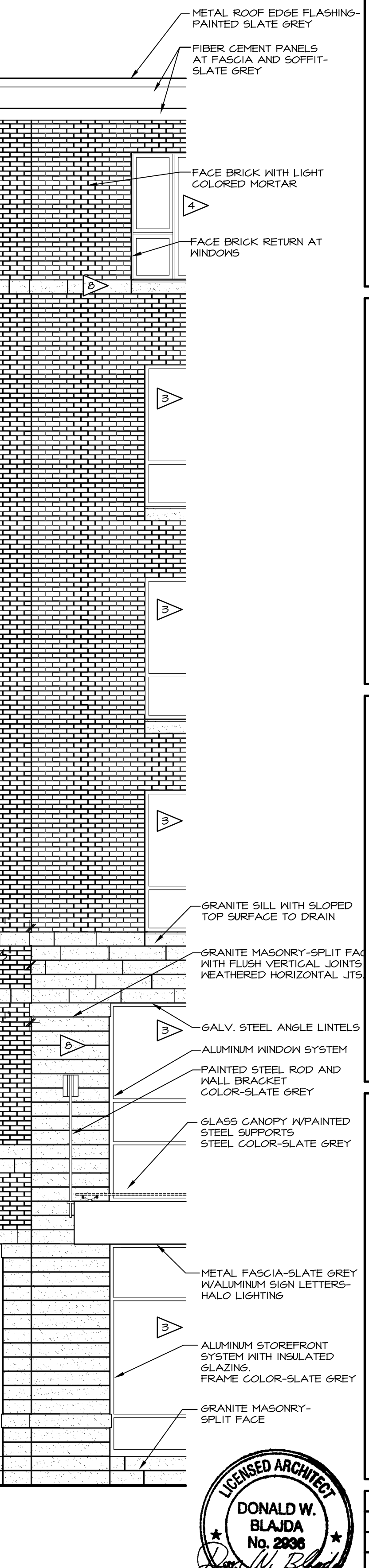
4 WALL SECTION
1/4" = 1'-0"



5 PARTIAL ELEVATION
1/4" = 1'-0"



6 PARTIAL ELEVATION
1/4" = 1'-0"



7 PARTIAL ELEVATION
1/4" = 1'-0"

NOTES (WALL SECTIONS):

- ▽ TYPICAL EXTERIOR WALL CONSTRUCTION-SEE WALL TYPE 1 ON DWS. A0.4
- ▽ TYPICAL ROOF CONSTRUCTION-EFDM MEMBRANE, 4" POLYISOCYANURATE INSULATION, METAL DECK
- ▽ ALUMINUM WINDOW UNIT-SEAL PERIMETER @ INTERIOR AND EXTERIOR
- ▽ METAL CLAD WOOD WINDOW UNIT-SEAL PERIMETER @ INTERIOR AND EXTERIOR
- ▽ RELIEVING ANGLE @ WINDOW-SEE DETAIL 6/A15
- ▽ RELIEVING ANGLE-SEE DETAIL 13/A15
- ▽ FACE BRICK VENEER
- ▽ GRANITE VENEER & BANDING
- ▽ METAL EDGE FLASHING WHOLD DOWN CLIPS
- ▽ 3 HR. FIRE-RATED FLOOR/CEILING ASSEMBLY (U.L. #6512)
- ▽ WOOD CEILING FINISH-SEE CEILING TYPE 14 ON DWS. A22.

DATE	REVISION SCHEDULE
05-15-13	REVISED CEILINGS AT FIRST FLOOR
05-22-13	ADDED DETAIL BUBBLE AT DTL. 5/A14
06-03-13	REVISED ALL SECTIONS AT FOUNDATION LEVEL

COPECHEE
CONSTRUCTION CORPORATION
11 CORPORATE DRIVE, BELMONT, NH 03220
PHONE (603) 527-9050 FAX (603) 527-9191

WALL SECTIONS

PROJECT: COMMERCIAL & MAPLE STREET
MIXED USE DEVELOPMENT
PORTLAND, ME

REGISTERED ARCHITECT
DONALD W. BLAJDA
No. 2836
STATE OF MAINE

DATE:	05-09-13
SCALE:	SEE PLAN
DRAWN BY:	KPH

A14
SHEET: