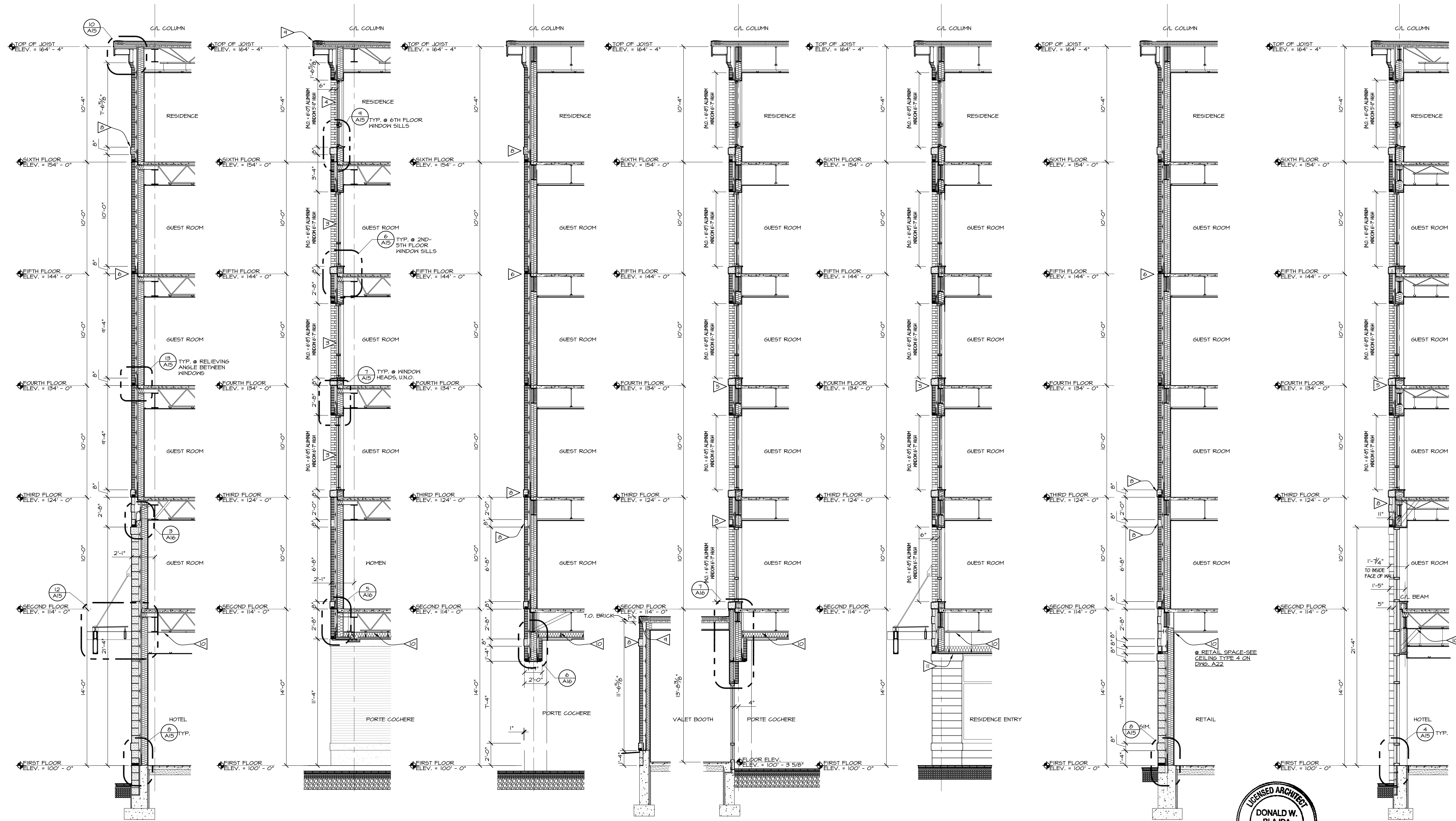


NOTES (WALL SECTIONS):

- ▽ TYPICAL EXTERIOR WALL CONSTRUCTION-SEE WALL TYPE 1 ON DWG. A0.4
- ▽ TYPICAL ROOF CONSTRUCTION-EPDM MEMBRANE, 4" POLYISOCYANURATE INSULATION, METAL DECK
- ▽ ALUMINUM WINDOW UNIT-SEAL PERIMETER @ INTERIOR AND EXTERIOR
- ▽ METAL GLAD WOOD WINDOW UNIT-SEAL PERIMETER @ INTERIOR AND EXTERIOR
- ▽ RELIEVING ANGLE @ WINDOW-SEE DETAIL 6/A15
- ▽ RELIEVING ANGLE-SEE DETAIL 13/A15
- ▽ FACE BRICK VENEER
- ▽ GRANITE VENEER & BANDING
- ▽ METAL EDGE FLASHING W/WHOLE DOWN CLIPS
- ▽ 3 HR. FIRE-RATED FLOOR/CEILING ASSEMBLY (U.L. #6912)
- ▽ WOOD CEILING FINISH-SEE CEILING TYPE 14 ON DWG. A22.



1 WALL SECTION 1/4" = 1'-0"
 2 WALL SECTION 1/4" = 1'-0"
 3 WALL SECTION 1/4" = 1'-0"
 4 WALL SECTION 1/4" = 1'-0"
 5 WALL SECTION 1/4" = 1'-0"
 6 WALL SECTION 1/4" = 1'-0"
 7 WALL SECTION 1/4" = 1'-0"

DATE	REVISION SCHEDULE
05-15-13	REVISED CEILINGS AT FIRST FLOOR
05-20-13	REVISED SECTION 6/A13
06-03-13	REVISED ALL SECTIONS AT FOUNDATION LEVEL

LOPECHEE
 CONSTRUCTION CORPORATION
 11 CORPORATE DRIVE, BELMONT NH 03320
 PHONE (603) 527-9050 FAX (603) 527-9191

WALL SECTIONS

PROJECT: **COMMERCIAL & MAPLE STREET MIXED USE DEVELOPMENT**
 PORTLAND, ME

DATE: 05-09-13
SCALE: SEE PLAN
DRAWN BY: KPH
A13
SHEET:

