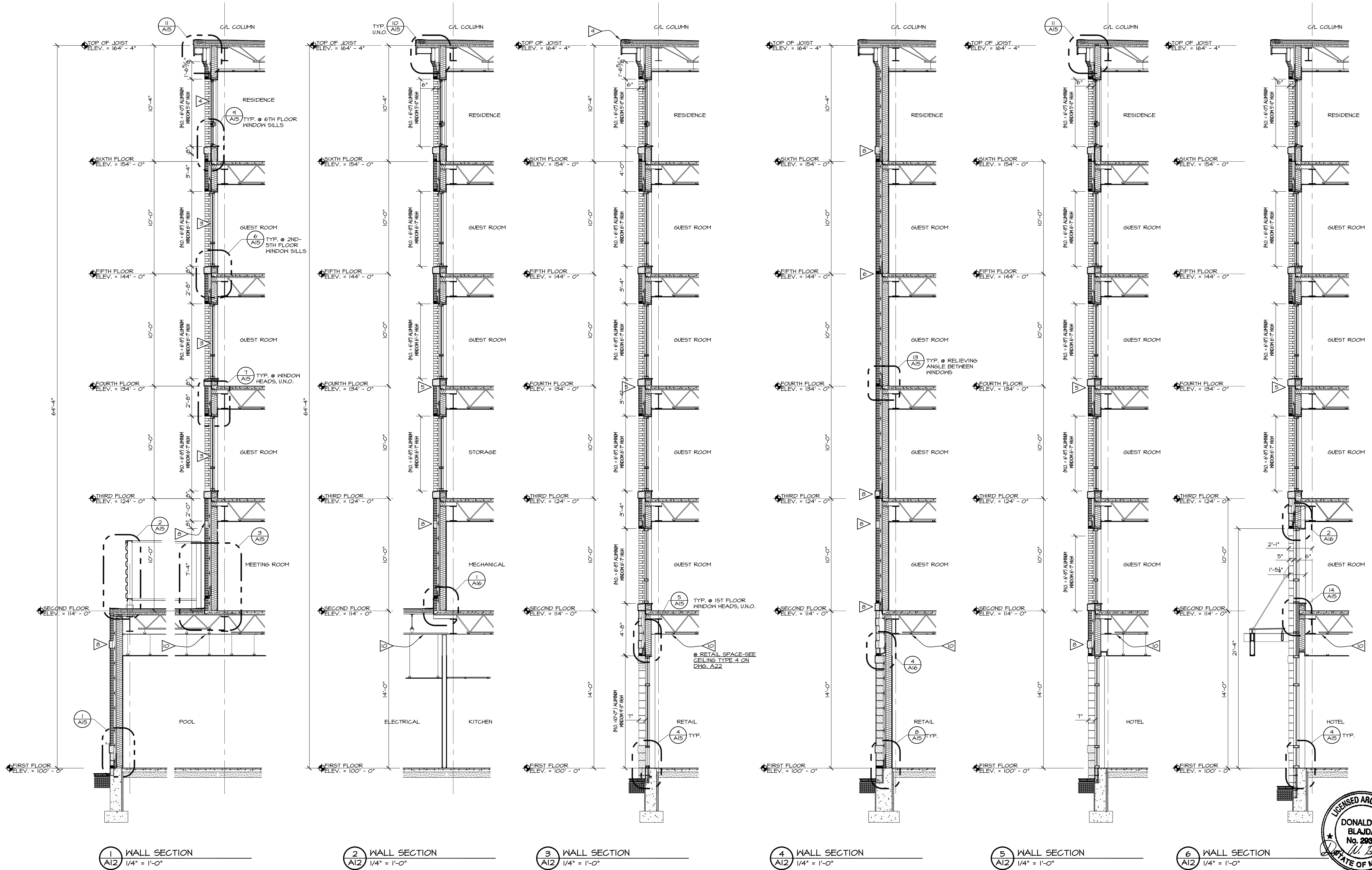


NOTES (WALL SECTIONS):

- ▽ TYPICAL EXTERIOR WALL CONSTRUCTION-SEE WALL TYPE 1 ON DWG. A0.4
- ▽ TYPICAL ROOF CONSTRUCTION-EPDM MEMBRANE, 4" POLYISOCYANURATE INSULATION, METAL DECK
- ▽ ALUMINUM WINDOW UNIT-SEAL PERIMETER @ INTERIOR AND EXTERIOR
- ▽ METAL CLAD WOOD WINDOW UNIT-SEAL PERIMETER @ INTERIOR AND EXTERIOR

- ▽ RELIEVING ANGLE @ WINDOW-SEE DETAIL 6/A15
- ▽ RELIEVING ANGLE-SEE DETAIL 13/A15
- ▽ FACE BRICK VENEER
- ▽ GRANITE VENEER & BANDING
- ▽ METAL EDGE FLASHING WHOLE DOWN CLIPS

- ▽ 3 HR. FIRE-RATED FLOOR/CEILING ASSEMBLY (U.L. #6512)
- ▽ WOOD CEILING FINISH-SEE CEILING TYPE 14 ON DWG. A22.



DATE	REVISION SCHEDULE
05-15-13	REVISION DESCRIPTION
06-03-13	REVISED CEILINGS AT FIRST FLOOR SPACES
	REVISED ALL SECTIONS AT FOUNDATION LEVEL

**LOPECHED**  
 CONSTRUCTION CORPORATION  
 11 CORPORATE DRIVE, BELMONT, NH 03220  
 PHONE (603) 527-9050 FAX (603) 527-9191

WALL SECTIONS

PROJECT: COMMERCIAL & MAPLE STREET MIXED USE DEVELOPMENT PORTLAND, ME

DATE: 05-09-13
SCALE: SEE PLAN
DRAWN BY: KPH
SHEET: A12

