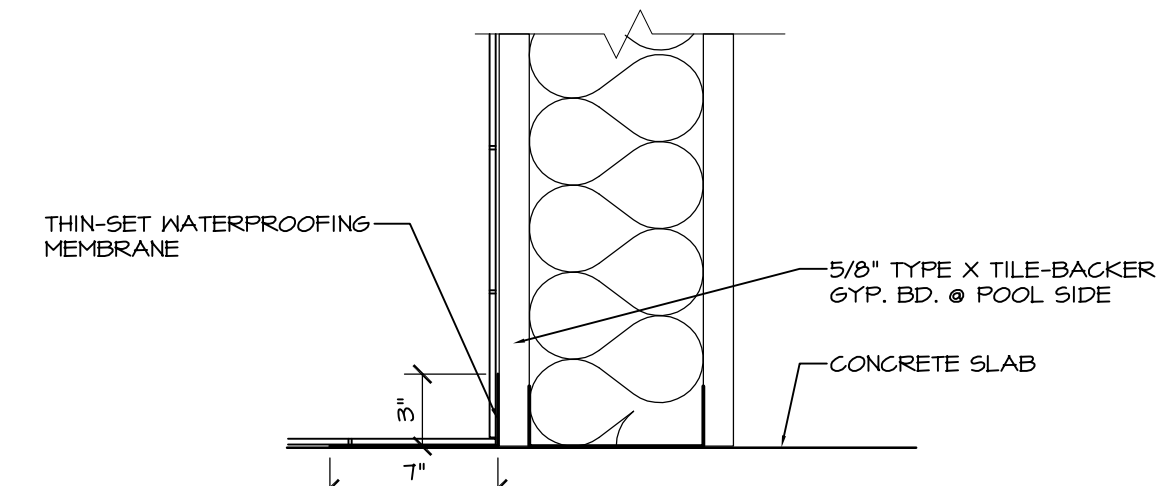
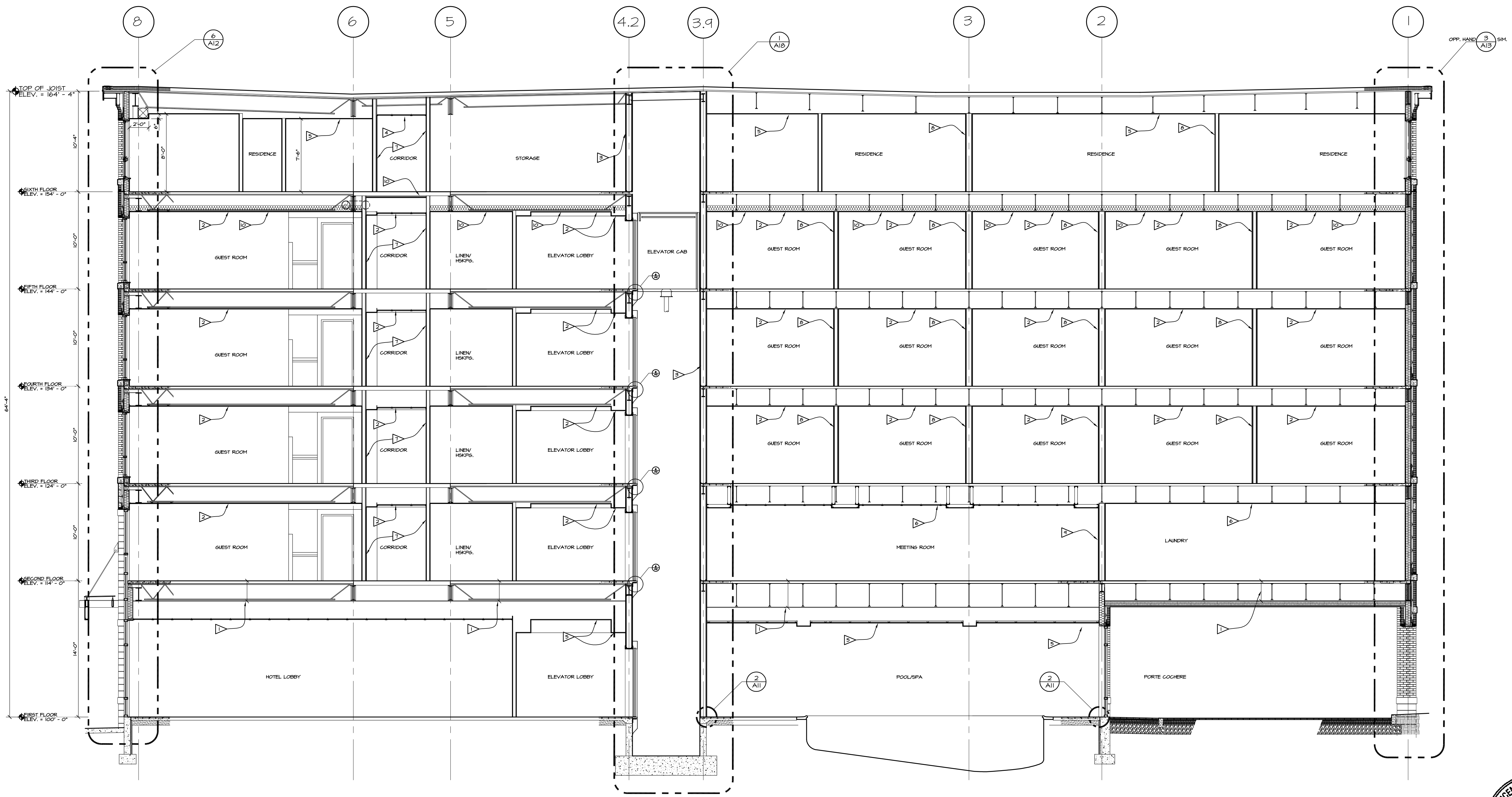


NOTES (BUILDING SECTIONS):

- 1 3 HR. FIRE-RATED FLOOR/CEILING ASSEMBLY (U.L. #6512) (U.L. #402 AT 1)
- 2 1 HR. FIRE-RATED FLOOR/CEILING ASSEMBLY (U.L. #6561) 1/2 HR. REQ'D.
- 3 2 HR. FIRE-RATED ENCLOSURE (SEE PLAN FOR WALL TYPE DESIGNATION)
- 4 SUSPENDED ACOUSTICAL CEILING (NON-RATED)
- 5 GYPSUM BD. CEILING (NON-RATED)
- 6 1 HR. FIRE-RATED FLOOR/CEILING ASSEMBLY (U.L. #6205)
- 7 1 HR. FIRE-RATED CORRIDOR WALLS (U.L. #414) 1/2 HR. REQUIRED)
- 8 1 HR. FIRE-RATED SEPARATION WALLS (U.L. #414) 1/2 HR. REQUIRED)
- 9 1 HR. FIRE-RATED SEPARATION WALLS (U.L. #414)
- 10 SEE NOTE ON FIFTH FLOOR CEILING PLAN RE:SOUND TREATMENT AT UNDERSIDE OF SIXTH FLOOR FRAMING.



2 WALL/FLOOR FLASHING AT POOL AREA
NOT TO SCALE
PROVIDE @ ALL WALLS IN POOL ROOM.



1 BUILDING SECTION
3/16" = 1'-0"

DATE	05-16-13	REVISION SCHEDULE	BY
	06-03-13	REVISION DESCRIPTION	
		REVISED CEILINGS AT POOL AND MEETING ROOM	
		ADDED DETAIL 2/A11	

COPECHEE
CONSTRUCTION CORPORATION
11 CORPORATE DRIVE, BELMONT NH 03220
PHONE (603) 527-9050 FAX (603) 527-9191

BUILDING SECTIONS

PROJECT: COMMERCIAL & MAPLE STREET
MIXED USE DEVELOPMENT
PORTLAND, ME

DATE: 05-09-13
SCALE: SEE PLAN
DRAWN BY: KPH

A11
SHEET:

