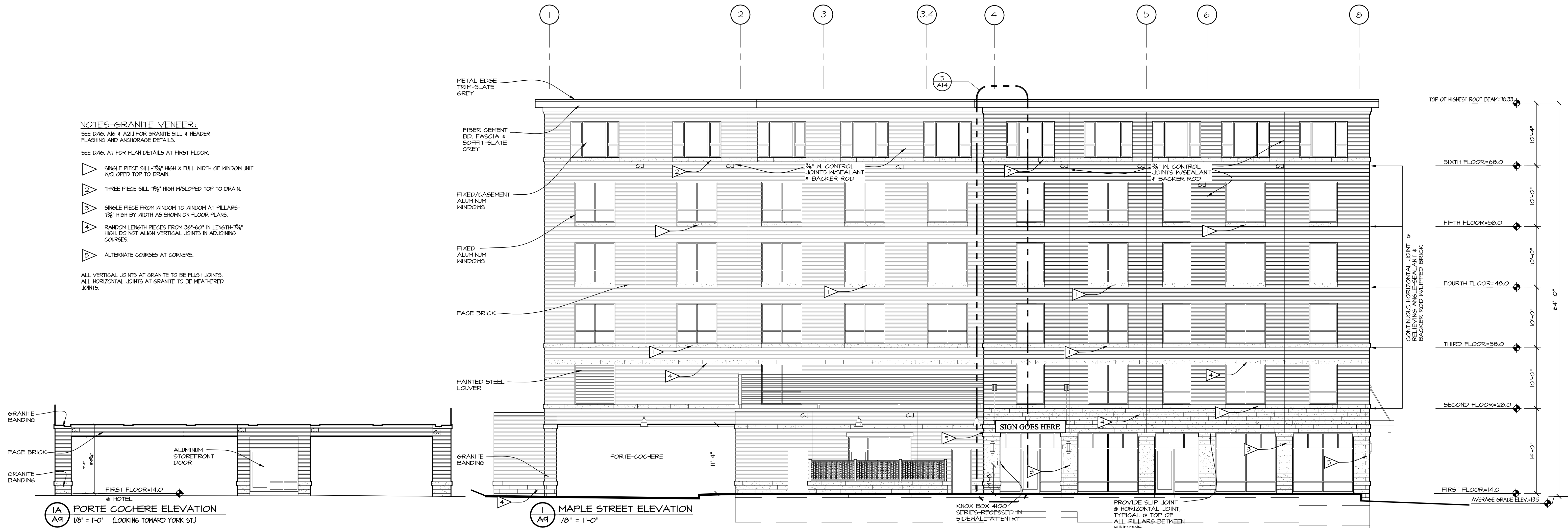


NOTES-GRANITE VENEER:
 SEE DWG. A15 & A21 FOR GRANITE SILL & HEADER FLASHING AND ANCHORAGE DETAILS.
 SEE DWG. A1 FOR PLAN DETAILS AT FIRST FLOOR.

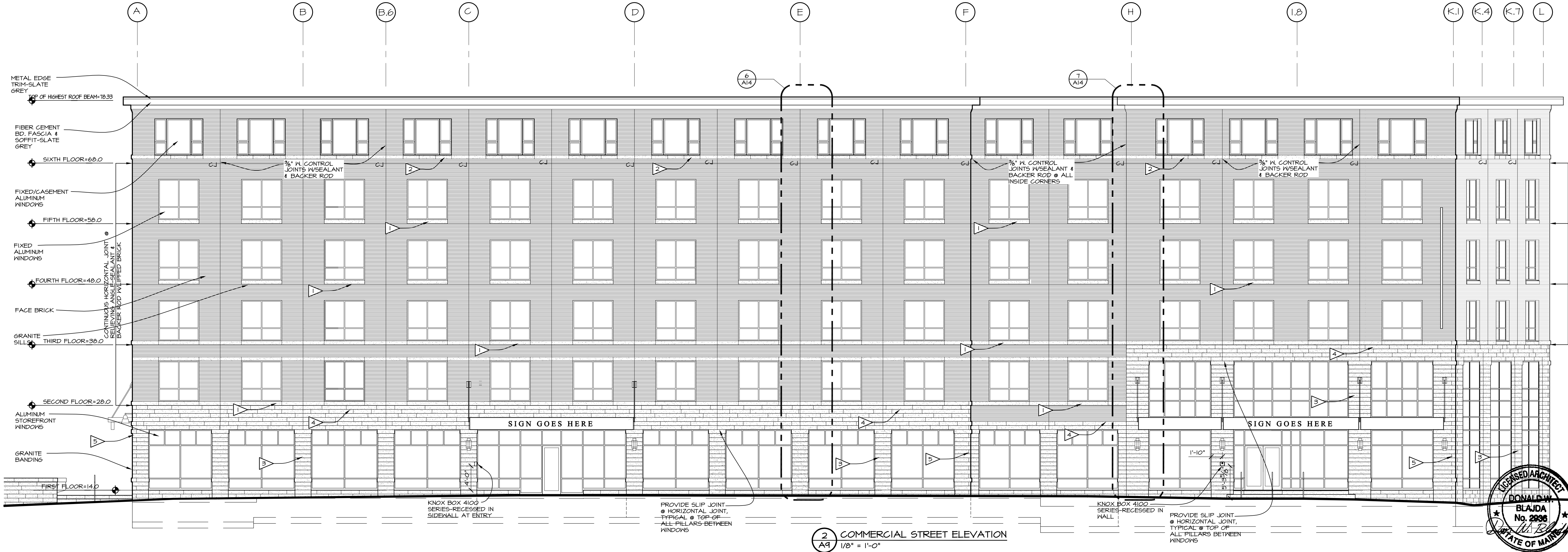
- ▽ SINGLE PIECE SILL-7/8" HIGH X FULL WIDTH OF WINDOW UNIT W/SLOPED TOP TO DRAIN.
- ▽ THREE PIECE SILL-7/8" HIGH W/SLOPED TOP TO DRAIN.
- ▽ SINGLE PIECE FROM WINDOW TO WINDOW AT PILLARS-7/8" HIGH BY WIDTH AS SHOWN ON FLOOR PLANS.
- ▽ RANDOM LENGTH PIECES FROM 36"-60" IN LENGTH-7/8" HIGH DO NOT ALIGN VERTICAL JOINTS IN ADJOINING COURSES.
- ▽ ALTERNATE COURSES AT CORNERS.

ALL VERTICAL JOINTS AT GRANITE TO BE FLUSH JOINTS.
 ALL HORIZONTAL JOINTS AT GRANITE TO BE WEATHERED JOINTS.



1A PORTE-COCHERE ELEVATION
 A9 1/8" = 1'-0" (LOOKING TOWARD YORK ST.)

1 MAPLE STREET ELEVATION
 A9 1/8" = 1'-0"



2 COMMERCIAL STREET ELEVATION
 A9 1/8" = 1'-0"

DATE	REVISION DESCRIPTION
05-20-13	ADDED DR # IEA TO POOL MECH. RM. EXTERIOR WALL
05-22-13	ADDED CONTROL JOINTS AND GRANITE COURSING & NOTES

LOPECHED
 CONSTRUCTION CORPORATION
 11 CORPORATE DRIVE, BELMONT, NH 03220
 PHONE (603) 527-9050 FAX (603) 527-9191

BUILDING ELEVATIONS

PROJECT: **COMMERCIAL & MAPLE STREET MIXED USE DEVELOPMENT**
 PORTLAND, ME

DATE: 05-04-13
 SCALE: SEE PLAN
 DRAWN BY: KPH
 SHEET: **A9**

