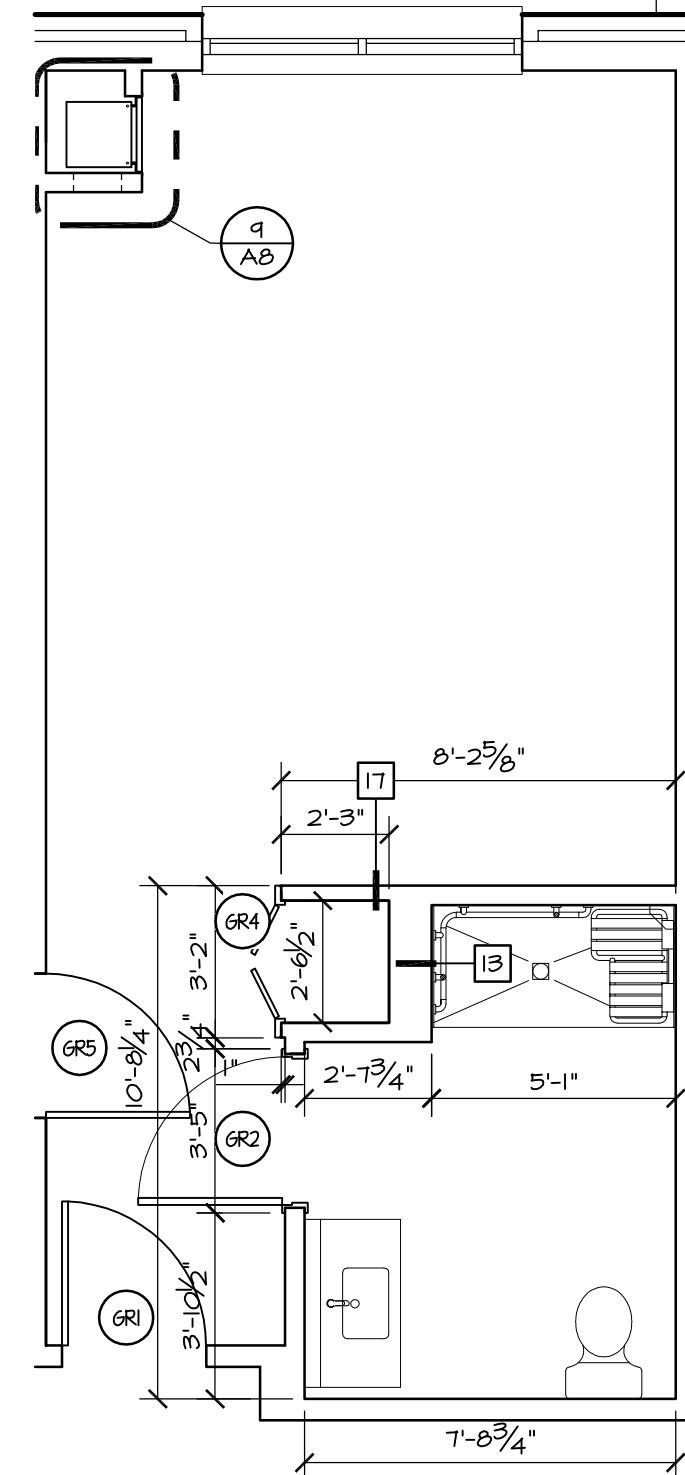
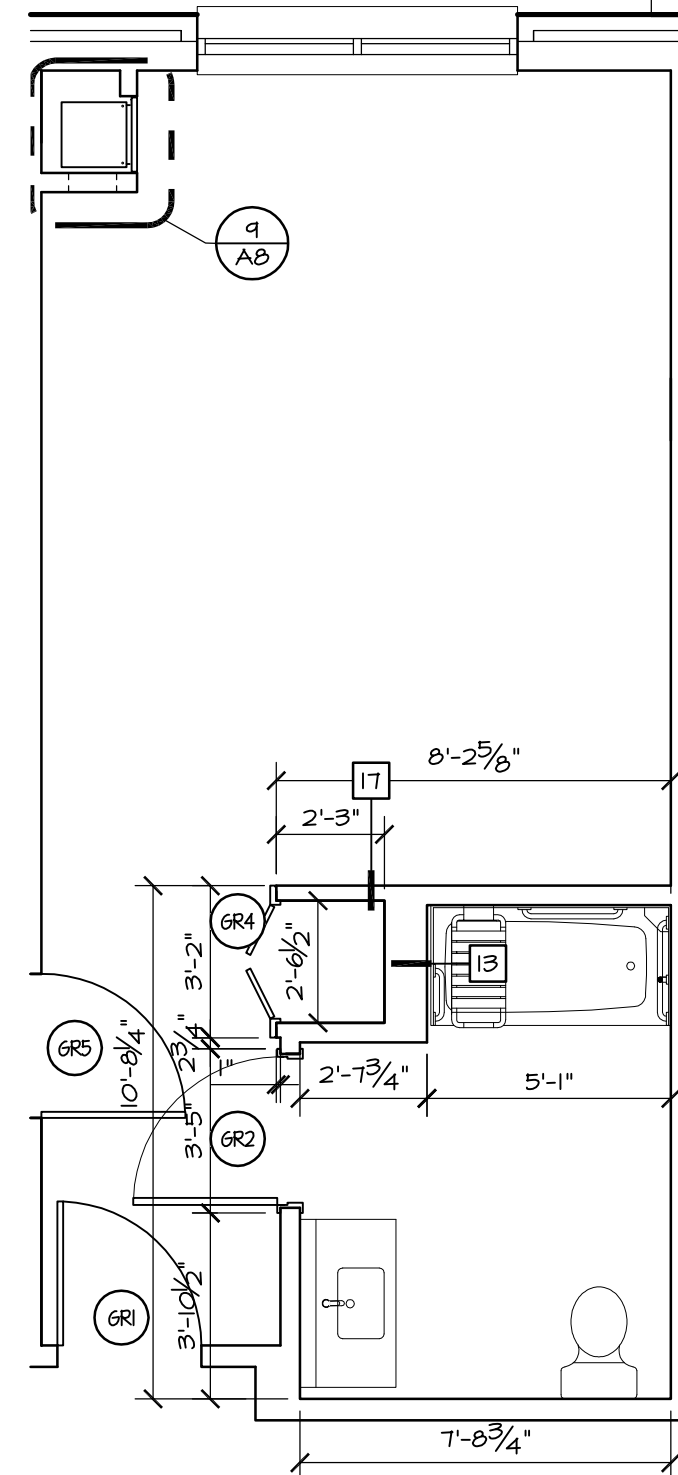


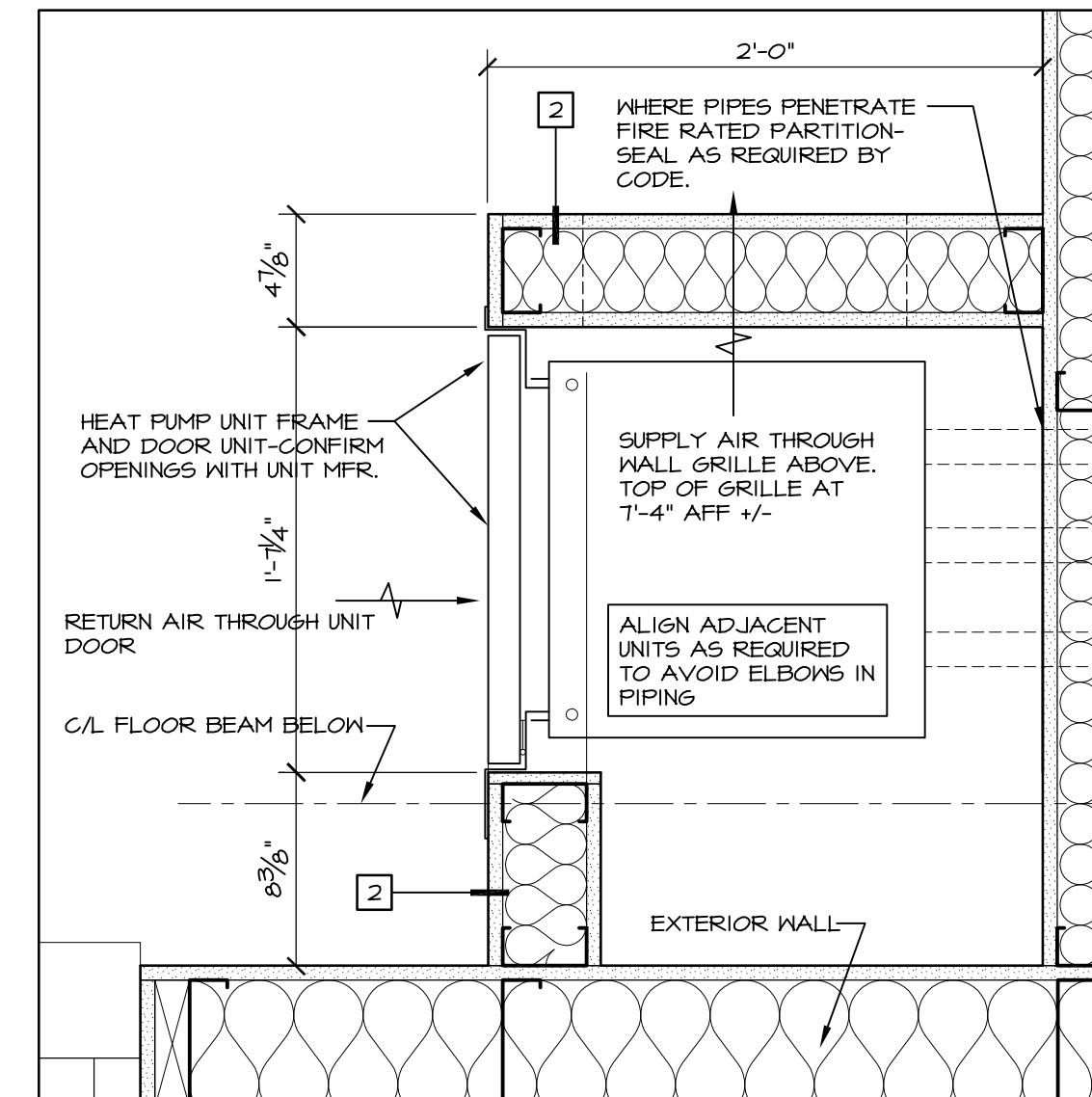
6 KING SUITE-CORNER  
AB 1/4" = 1'-0"



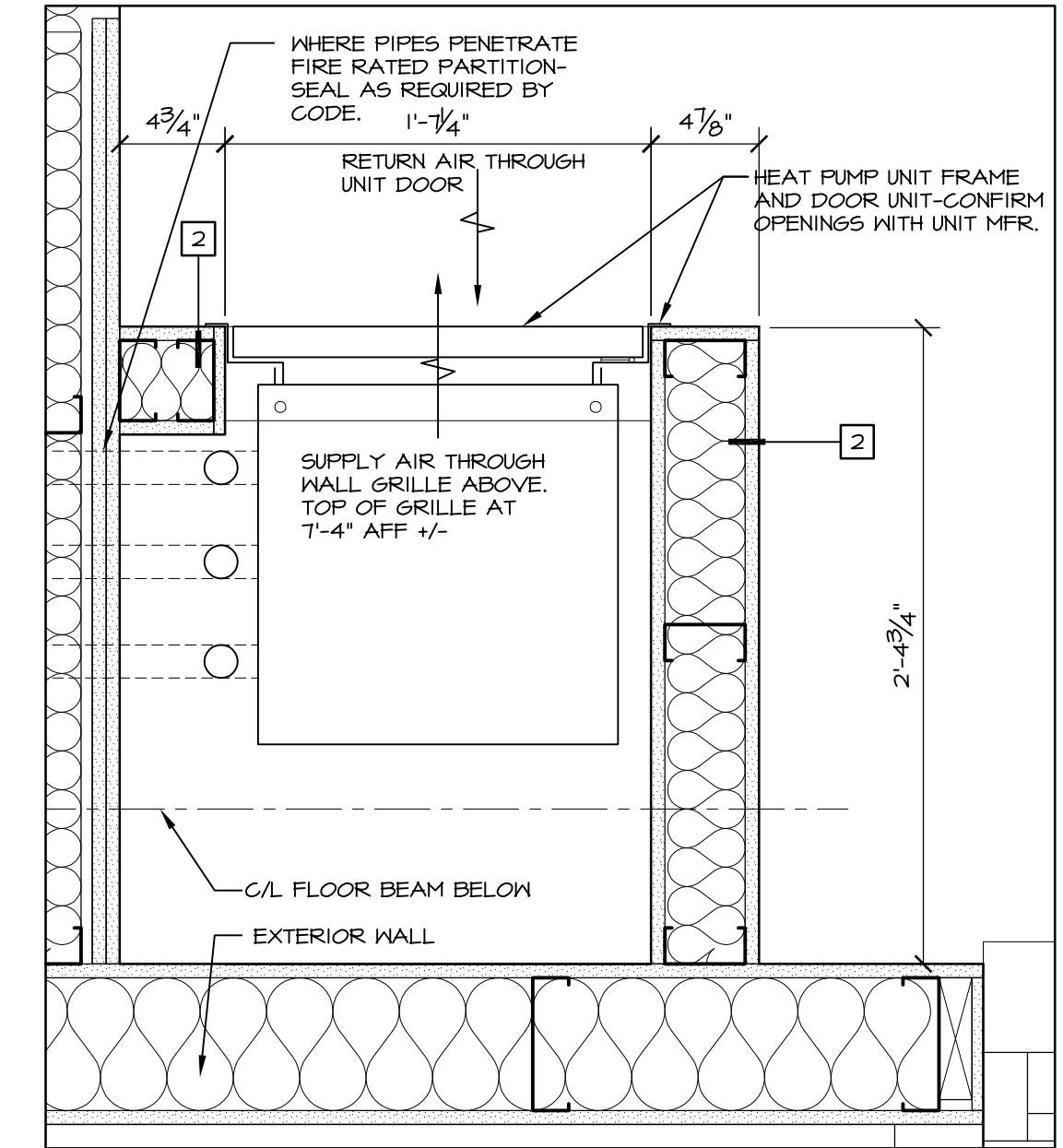
7 ACCESSIBLE KING-SHOWER  
AB 1/4" = 1'-0"



8 ACCESSIBLE KING-TUB  
AB 1/4" = 1'-0"

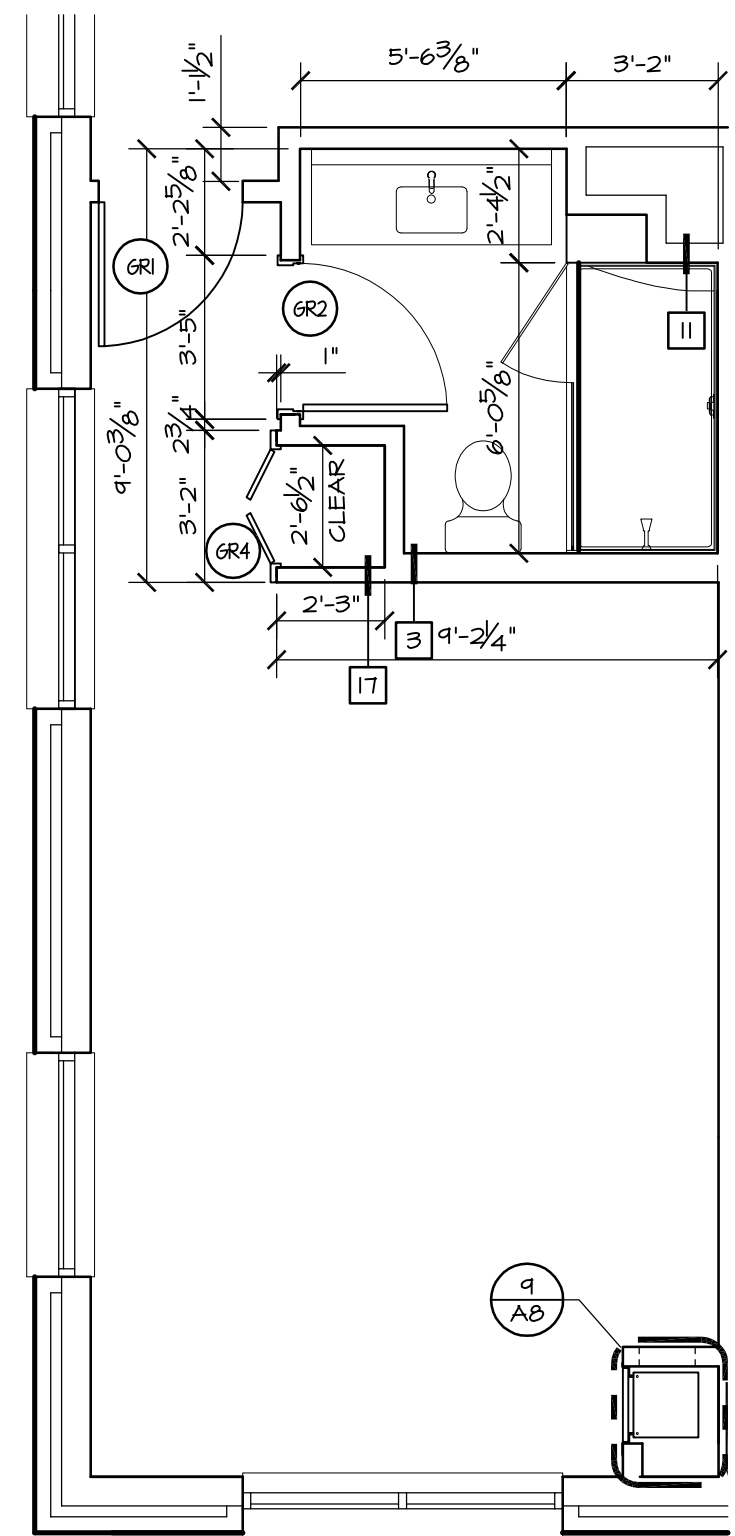


9 TYPICAL HEAT PUMP ENCLOSURE @ KING GUESTROOM  
AB 1 1/2" = 1'-0"

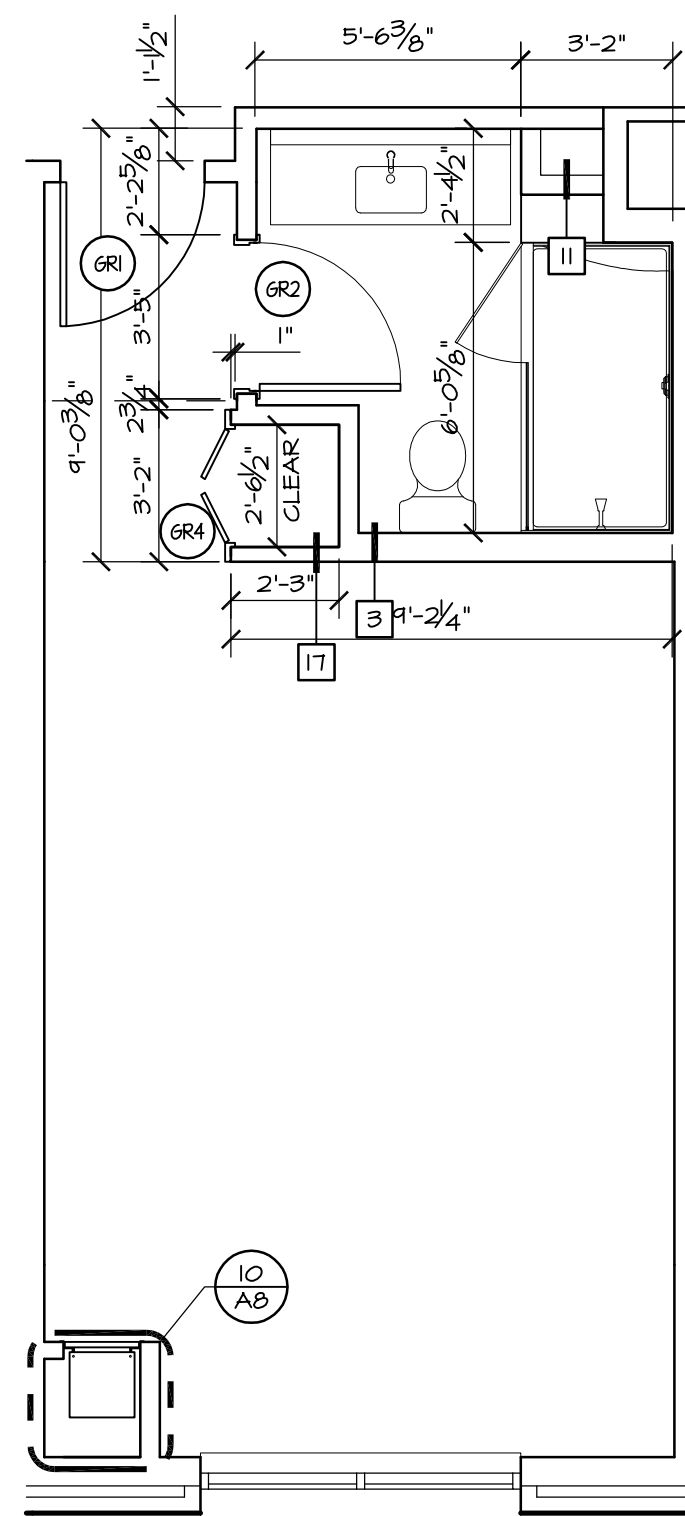


10 TYPICAL HEAT PUMP ENCLOSURE @ Q/Q GUESTROOM  
AB 1 1/2" = 1'-0"

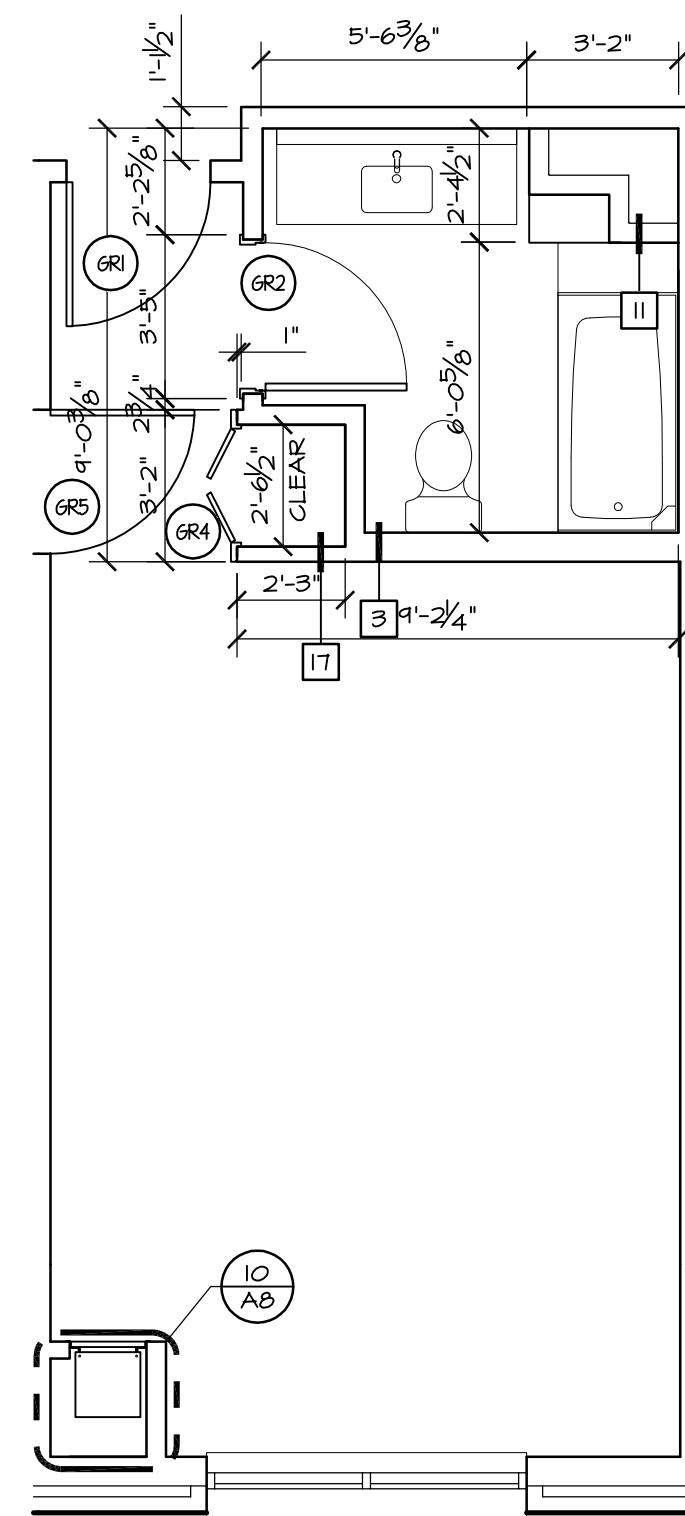
GUESTROOM INTERIOR WALLS TO BE WALL TYPE 2 UNLESS NOTED OTHERWISE.  
TUB/SHOWER ENCLOSURES-PROVIDE ADDITIONAL LAYER OF 3/8" M.R. GYP. BD. TO TUB/SHOWER SIDE OF WALL.



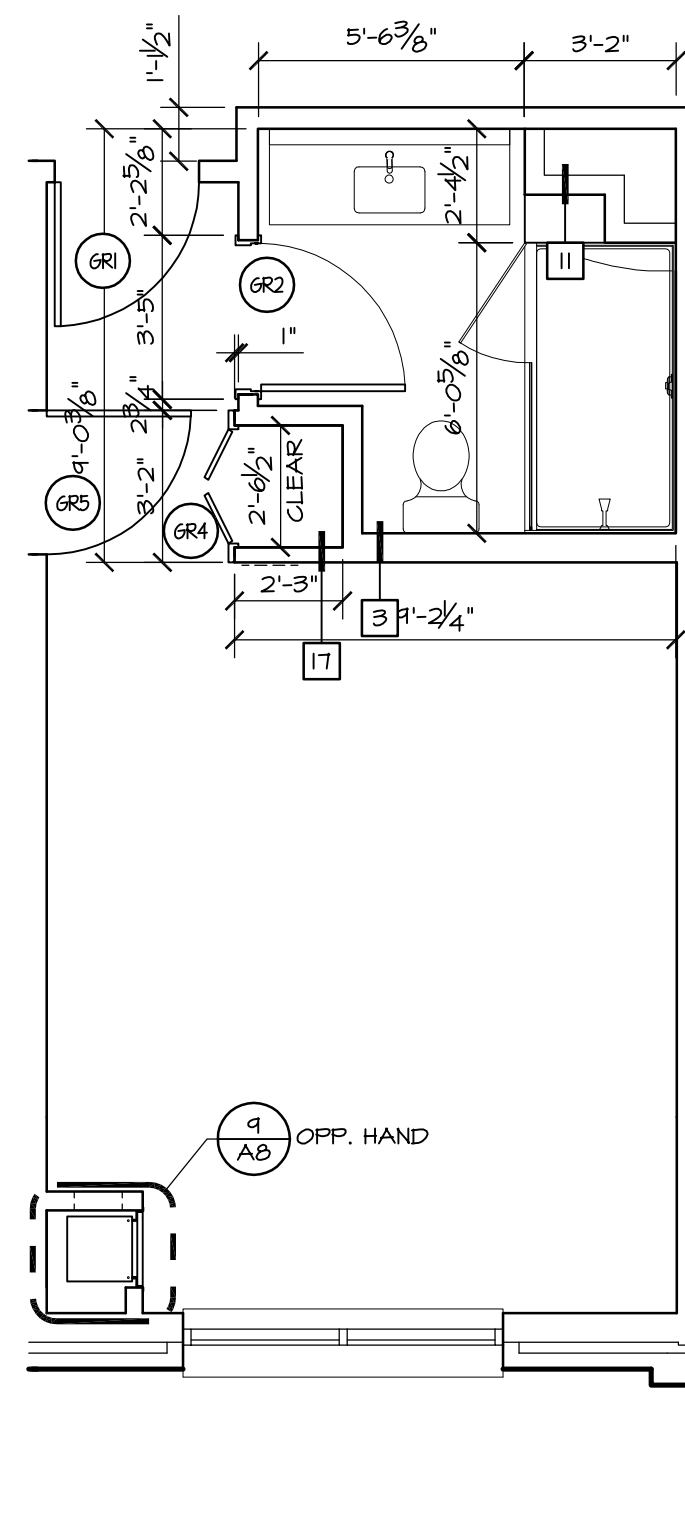
5 KING-CORNER  
AB 1/4" = 1'-0"



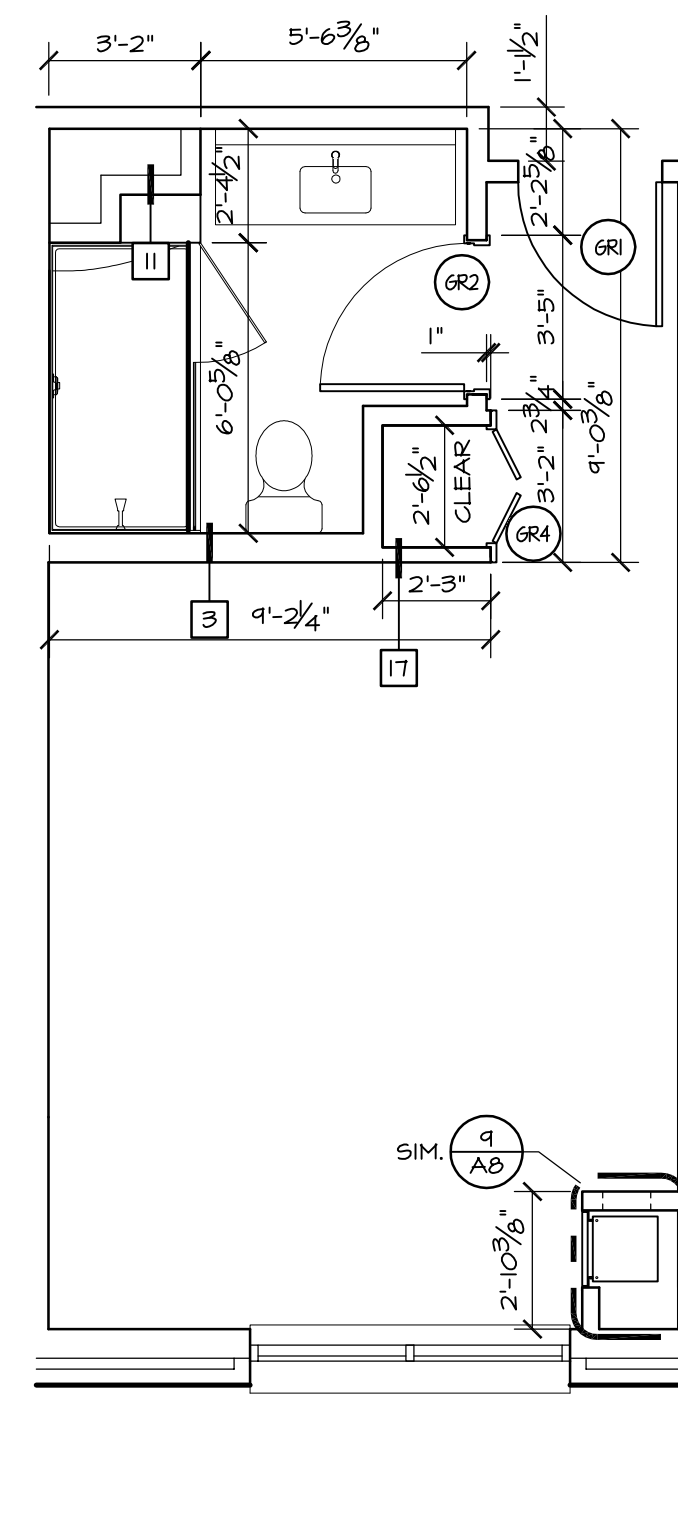
4 Q/Q SHOWER  
AB 1/4" = 1'-0"



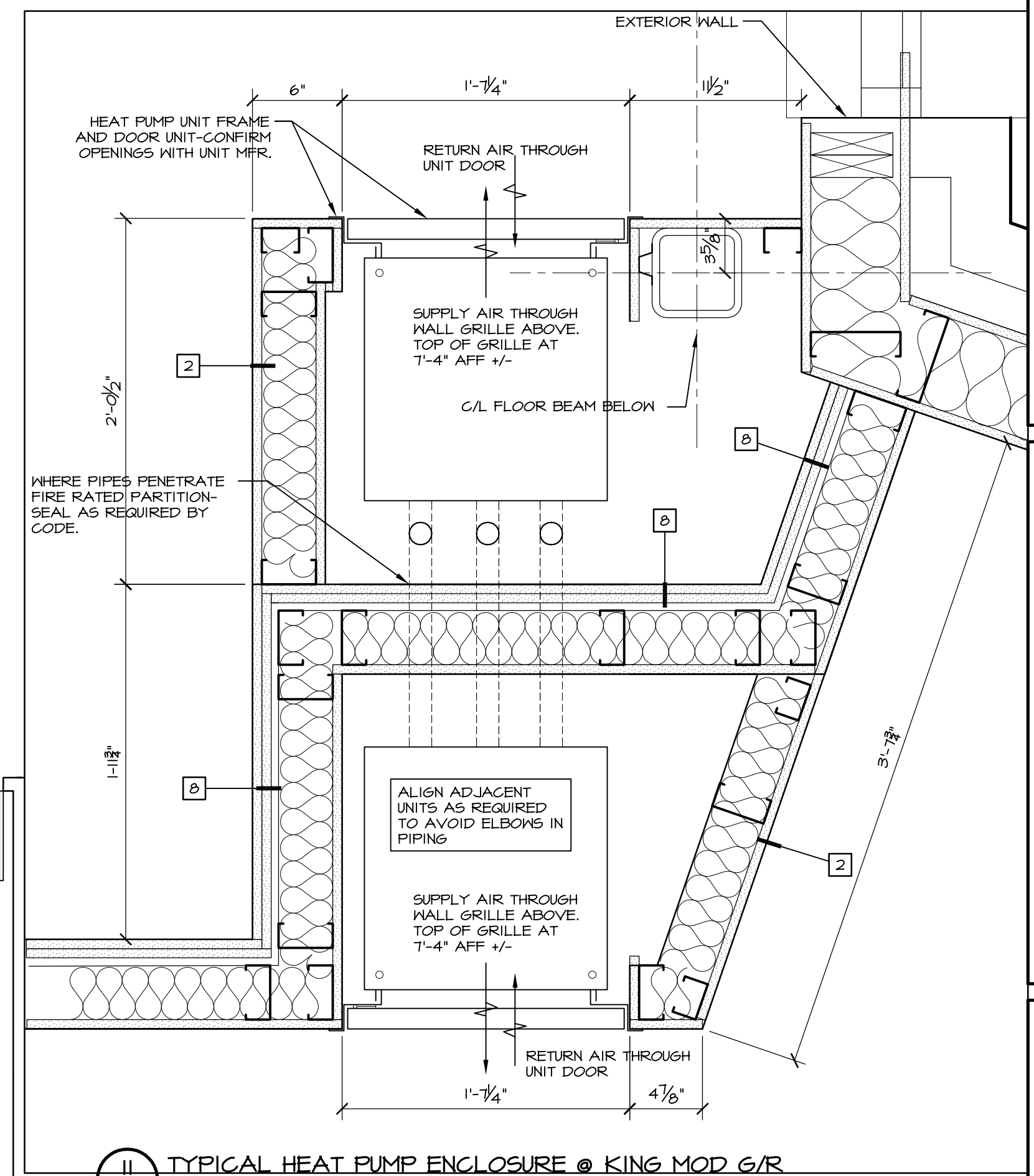
3 Q/Q SUITE-TUB  
AB 1/4" = 1'-0"



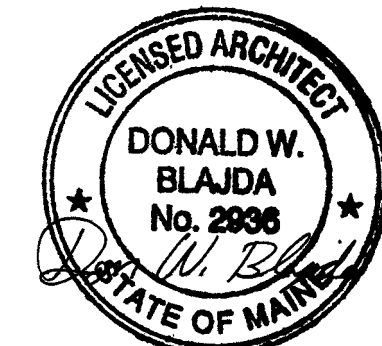
2 KING-SUITE  
AB 1/4" = 1'-0"



1 KING-STANDARD  
AB 1/4" = 1'-0"



11 TYPICAL HEAT PUMP ENCLOSURE @ KING MOD G/R  
AB 1 1/2" = 1'-0"



DATE	REVISION DESCRIPTION
05-10-13	ADDED HEAT PUMP ENCLOSURE DETAILS/ADDED DETAIL BUBBLES AT PLANS

**COPECEE**  
CONSTRUCTION CORPORATION  
11 CORPORATE DRIVE, BELMONT NH 03220  
PHONE (603) 527-9050 FAX (603) 527-9191

**GUESTROOM PLANS**

PROJECT: **COMMERCIAL & MAPLE STREET MIXED USE DEVELOPMENT**  
PORTLAND, ME

DATE: 05-09-13
SCALE: SEE PLAN
DRAWN BY: KPH
<b>A8</b>
SHEET: