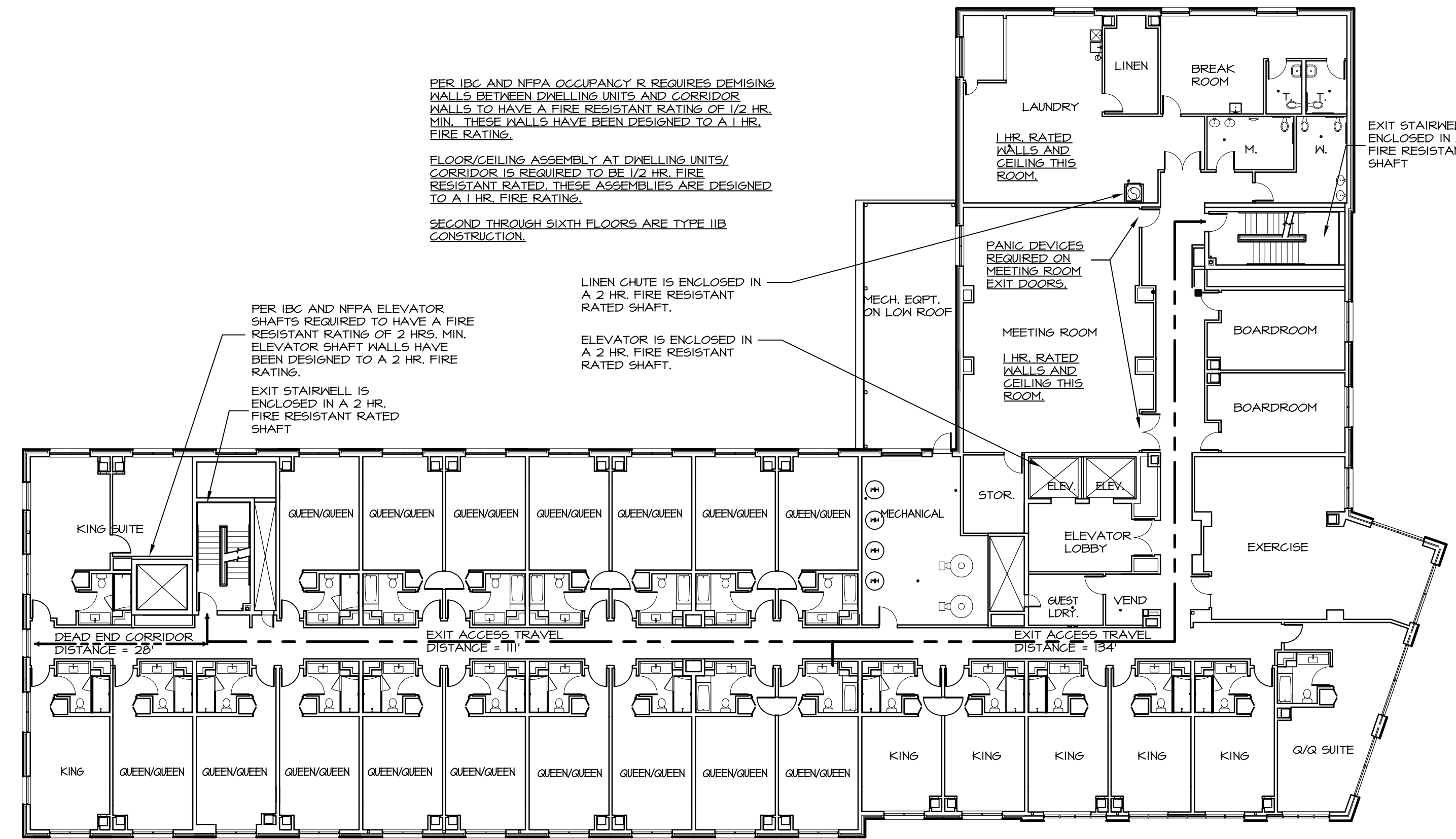
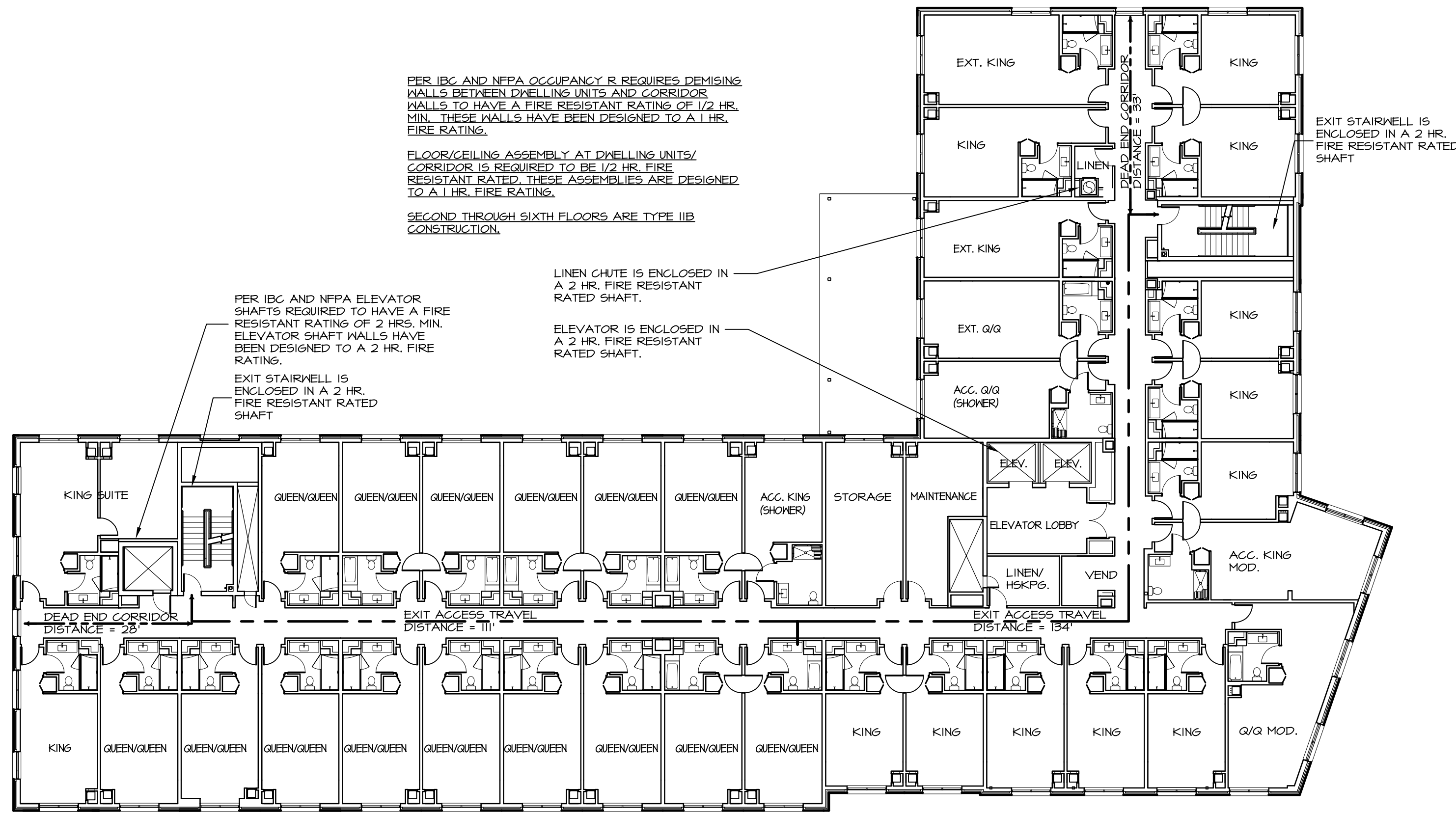


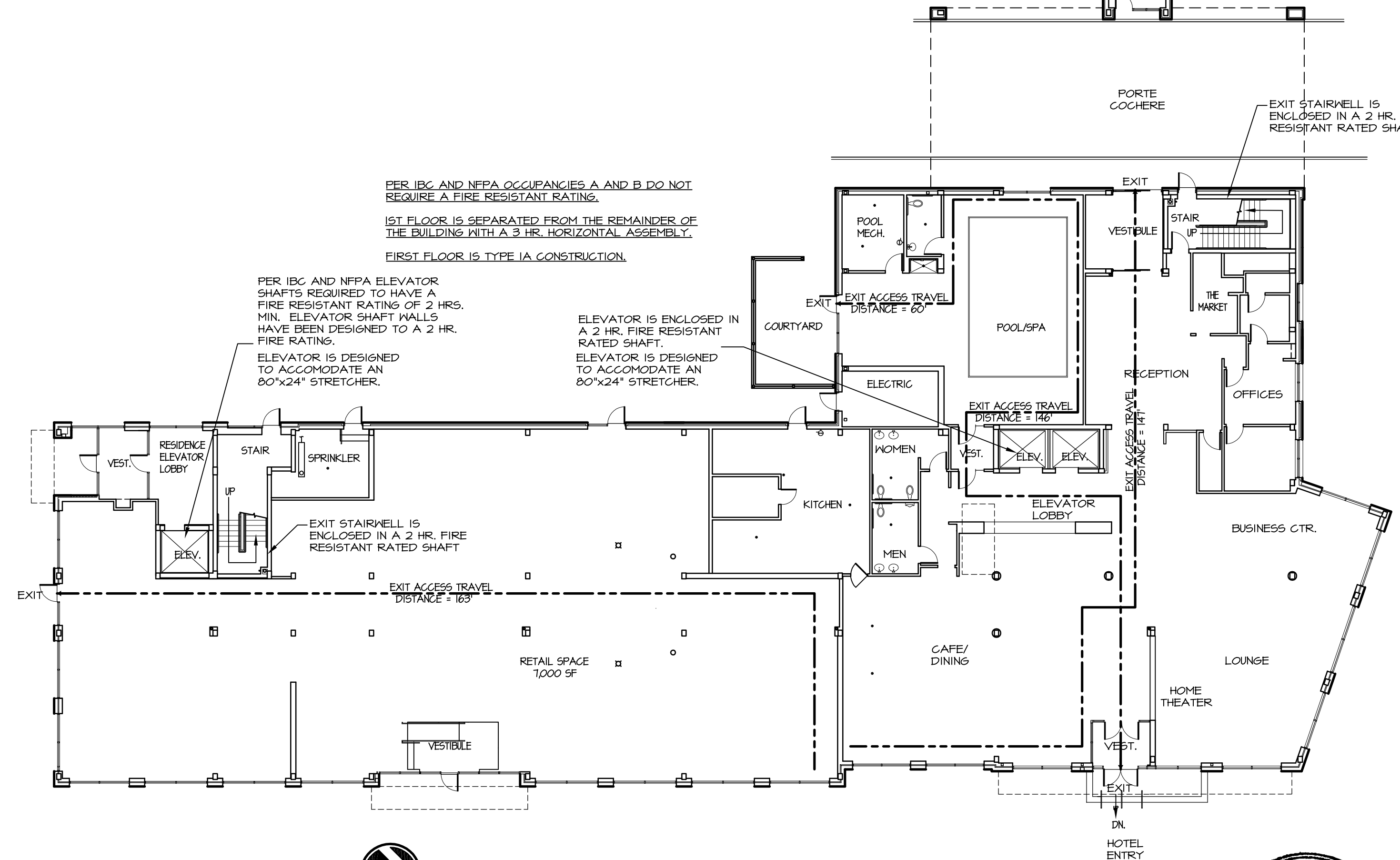
4 FOURTH FLOOR PLAN
A0.2 1/16" = 1'-0"



2 SECOND FLOOR PLAN
A0.2 1/16" = 1'-0"



3 THIRD FLOOR PLAN
A0.2 1/16" = 1'-0"



1 FIRST FLOOR PLAN
A0.2 1/16" = 1'-0"



PER IBC AND NFPA OCCUPANCY R REQUIRES DEMISING WALLS BETWEEN DWELLING UNITS AND CORRIDOR WALLS TO HAVE A FIRE RESISTANT RATING OF 1/2 HR. MIN. THESE WALLS HAVE BEEN DESIGNED TO A 1 HR. FIRE RATING.
FLOOR/CEILING ASSEMBLY AT DWELLING UNITS/ CORRIDOR IS REQUIRED TO BE 1/2 HR. FIRE RESISTANT RATED. THESE ASSEMBLIES ARE DESIGNED TO A 1 HR. FIRE RATING.
SECOND THROUGH SIXTH FLOORS ARE TYPE IIB CONSTRUCTION.

PER IBC AND NFPA ELEVATOR SHAFTS REQUIRED TO HAVE A FIRE RESISTANT RATING OF 2 HRS. MIN. ELEVATOR SHAFT WALLS HAVE BEEN DESIGNED TO A 2 HR. FIRE RATING.
EXIT STAIRWELL IS ENCLOSED IN A 2 HR. FIRE RESISTANT RATED SHAFT.
LINEN CHUTE IS ENCLOSED IN A 2 HR. FIRE RESISTANT RATED SHAFT.
ELEVATOR IS ENCLOSED IN A 2 HR. FIRE RESISTANT RATED SHAFT.

PER IBC AND NFPA OCCUPANCY R REQUIRES DEMISING WALLS BETWEEN DWELLING UNITS AND CORRIDOR WALLS TO HAVE A FIRE RESISTANT RATING OF 1/2 HR. MIN. THESE WALLS HAVE BEEN DESIGNED TO A 1 HR. FIRE RATING.
FLOOR/CEILING ASSEMBLY AT DWELLING UNITS/ CORRIDOR IS REQUIRED TO BE 1/2 HR. FIRE RESISTANT RATED. THESE ASSEMBLIES ARE DESIGNED TO A 1 HR. FIRE RATING.
SECOND THROUGH SIXTH FLOORS ARE TYPE IIB CONSTRUCTION.

PER IBC AND NFPA ELEVATOR SHAFTS REQUIRED TO HAVE A FIRE RESISTANT RATING OF 2 HRS. MIN. ELEVATOR SHAFT WALLS HAVE BEEN DESIGNED TO A 2 HR. FIRE RATING.
EXIT STAIRWELL IS ENCLOSED IN A 2 HR. FIRE RESISTANT RATED SHAFT.
LINEN CHUTE IS ENCLOSED IN A 2 HR. FIRE RESISTANT RATED SHAFT.
ELEVATOR IS ENCLOSED IN A 2 HR. FIRE RESISTANT RATED SHAFT.

PER IBC AND NFPA OCCUPANCY R REQUIRES DEMISING WALLS BETWEEN DWELLING UNITS AND CORRIDOR WALLS TO HAVE A FIRE RESISTANT RATING OF 1/2 HR. MIN. THESE WALLS HAVE BEEN DESIGNED TO A 1 HR. FIRE RATING.
FLOOR/CEILING ASSEMBLY AT DWELLING UNITS/ CORRIDOR IS REQUIRED TO BE 1/2 HR. FIRE RESISTANT RATED. THESE ASSEMBLIES ARE DESIGNED TO A 1 HR. FIRE RATING.
SECOND THROUGH SIXTH FLOORS ARE TYPE IIB CONSTRUCTION.

PER IBC AND NFPA ELEVATOR SHAFTS REQUIRED TO HAVE A FIRE RESISTANT RATING OF 2 HRS. MIN. ELEVATOR SHAFT WALLS HAVE BEEN DESIGNED TO A 2 HR. FIRE RATING.
EXIT STAIRWELL IS ENCLOSED IN A 2 HR. FIRE RESISTANT RATED SHAFT.
LINEN CHUTE IS ENCLOSED IN A 2 HR. FIRE RESISTANT RATED SHAFT.
ELEVATOR IS ENCLOSED IN A 2 HR. FIRE RESISTANT RATED SHAFT.

PER IBC AND NFPA OCCUPANCIES A AND B DO NOT REQUIRE A FIRE RESISTANT RATING.
1ST FLOOR IS SEPARATED FROM THE REMAINDER OF THE BUILDING WITH A 3 HR. HORIZONTAL ASSEMBLY.
FIRST FLOOR IS TYPE IA CONSTRUCTION.

PER IBC AND NFPA ELEVATOR SHAFTS REQUIRED TO HAVE A FIRE RESISTANT RATING OF 2 HRS. MIN. ELEVATOR SHAFT WALLS HAVE BEEN DESIGNED TO A 2 HR. FIRE RATING.
ELEVATOR IS DESIGNED TO ACCOMMODATE AN 80"x24" STRETCHER.
ELEVATOR IS ENCLOSED IN A 2 HR. FIRE RESISTANT RATED SHAFT.
ELEVATOR IS DESIGNED TO ACCOMMODATE AN 80"x24" STRETCHER.

DATE	REVISION SCHEDULE	REVISION DESCRIPTION

COPECEE
CONSTRUCTION CORPORATION
11 CORPORATE DRIVE, BELMONT NH 03220
PHONE (603) 527-9090 FAX (603) 527-9191

CODE PLANS
INFORMATION

PROJECT: COMMERCIAL & MAPLE STREET
MIXED USE DEVELOPMENT
PORTLAND, ME

DATE: 05-09-13
SCALE: SEE PLAN
DRAWN BY: KPH

A0.2
SHEET:

