

SPREAD FOOTING SCHEDULE			(NOTE: ONLY FTG. DESIGNATED F-T REQUIRE TOP REINF.)	
TYPE	SIZE	REINFORCING	BOTTOM	TOP
F3.5	3'-6"x3'-6"x1'-0"	(6) #5 BARS EACH WAY, EVEN SPACING	NONE	NONE
F5.5	5'-6"x5'-6"x1'-6"	(6) #5 BARS EACH WAY, EVEN SPACING	NONE	NONE
F6	6'-0"x6'-0"x1'-6"	(6) #6 BARS EACH WAY, EVEN SPACING	NONE	NONE
F6.5	6'-6"x6'-6"x1'-6"	(6) #6 BARS EACH WAY, EVEN SPACING	NONE	NONE
F7	7'-0"x7'-0"x2'-0"	(8) #7 BARS EACH WAY, EVEN SPACING	NONE	NONE
F7.5	7'-6"x7'-6"x2'-0"	(8) #7 BARS EACH WAY, EVEN SPACING	NONE	NONE
F8	8'-0"x8'-0"x2'-0"	(8) #7 BARS EACH WAY, EVEN SPACING	NONE	NONE
F8.5	8'-6"x8'-6"x2'-0"	(8) #7 BARS EACH WAY, EVEN SPACING	NONE	NONE
F9	9'-0"x9'-0"x2'-0"	(8) #7 BARS EACH WAY, EVEN SPACING	NONE	NONE
F9.5	9'-6"x9'-6"x2'-0"	(10) #7 BARS EACH WAY, EVEN SPACING	NONE	NONE
F10	10'-0"x10'-0"x2'-4"	(10) #7 BARS EACH WAY, EVEN SPACING	NONE	NONE
F11	11'-0"x11'-0"x2'-4"	(11) #7 BARS EACH WAY, EVEN SPACING	NONE	NONE
F11.5	11'-6"x11'-6"x2'-4"	(11) #7 BARS EACH WAY, EVEN SPACING	NONE	NONE

**END WALL SLEEVE LEGS**  
 E.S. = ELECTRIC SLEEVE  
 W.S. = WATER SLEEVE  
 T.C.S. = TELE. & COMM. SLEEVE  
 R.D.S. = ROOF DRAIN SLEEVE  
 S.S. = SEWER SLEEVE

**FOOTING LOAD LEGEND**  
 XXX/XXX/XXX = KIP LOAD (DL/LL/TL)  
 XXXX = KIP LOAD (TL)  
 XXXXXXX/XXX/XXX ARE MAX. BEARING FORCES FROM GRAVITY LOAD COMBINATIONS  
 XXX LOADS ARE MAX. BEARING FORCES FROM LATERAL LOAD COMBINATIONS (WIND AND SEISMIC)  
 N--- = RAM NOISE #

NOTE: ALL BUILDING FOOTINGS SHALL REST ON GROUTED RAMMED AGGREGATE PIERS DESIGNED BY DEEP FOUNDATION INSTALLATION CONTRACTOR

NOTE: TOPR = 99'-4" (TYP - UNO)  
 NOTE: TOP OF INTERIOR FTG. = 99'-4" (TYP - UNO)

CONCRETE SLAB ON GRADE ELEVATION = 100'-0"

CONCRETE SLAB ON GRADE ELEVATION = 101'-6"

4" THICK 3000 PSI, TYPE I CONCRETE SLAB ON GRADE W/ FIBERMESH OVER 15 MIL. POLYETHYLENE VAPOR RETARDER OVER SLAB SUBGRADE PER GEOTECHNICAL REPORT

NOTE: FIRST FLOOR LOADING 100 PSF LL 40 PSF DL  
 NOTE: FROST WALL LOADING BOT. OF FTG = 15 K/F DL

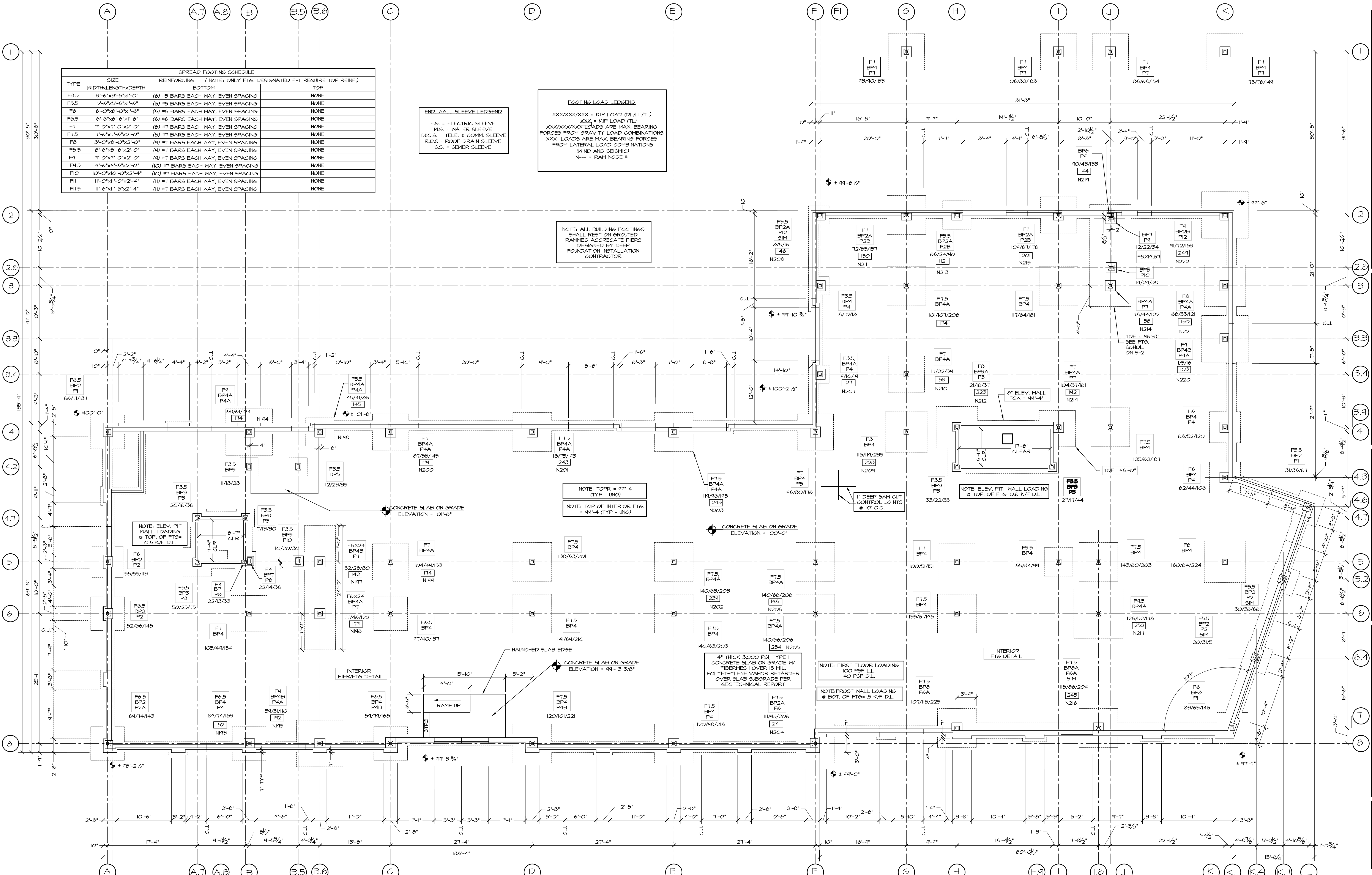
NOTE: ELEV. PIT WALL LOADINGS TOP OF FTG = 0.6 K/F DL

NOTE: ELEV. PIT WALL LOADING TOP OF FTG = 0.6 K/F DL

INTERIOR PIER/FTG DETAIL

HAUNCHED SLAB EDGE

INTERIOR FTG DETAIL



REVISION SCHEDULE	
DATE	REVISION DESCRIPTION
01-30-13	REVISE FND. LOADS & REVISE TITLE BLOCK
02-12-13	REVISE FND. LOADS PER LATERAL FRAMING CHANGES
02-15-13	ADD RAM NOISE NUMBERS

**LOPECHED**  
 CONSTRUCTION CORPORATION  
 11 CORPORATE DRIVE, BELMONT, NH 03320  
 PHONE: (603) 227-9999 FAX: (603) 227-9191

**FOUNDATION & FOOTING LOADING PLAN**

PROJECT: **COMMERCIAL & MAPLE STREET MIXED USE DEVELOPMENT**  
 PORTLAND, ME.

DATE: 02-15-13  
 SCALE: 1/8" = 1'-0"  
 DRAWN BY: E.J.  
**S5**  
 SHEET: