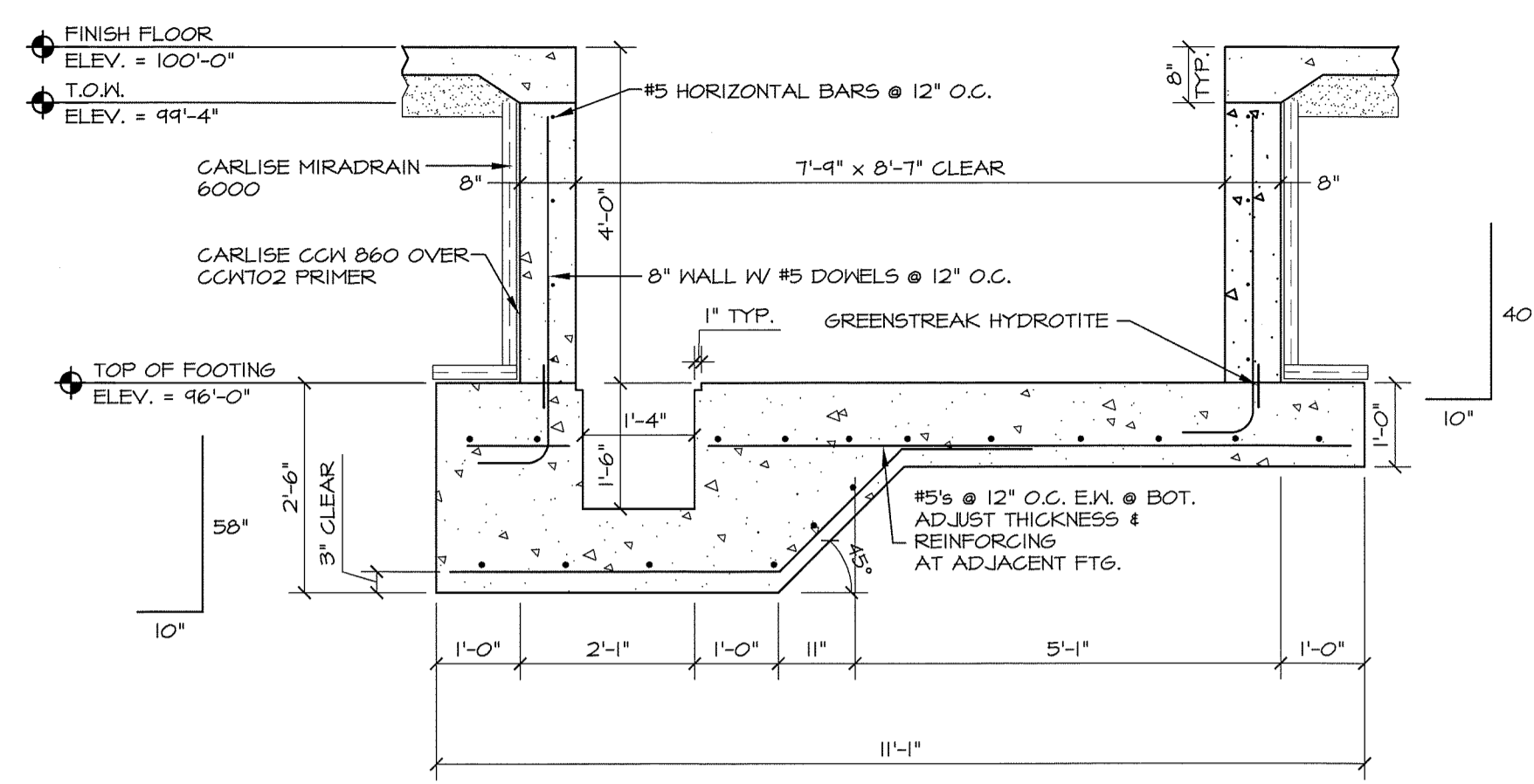
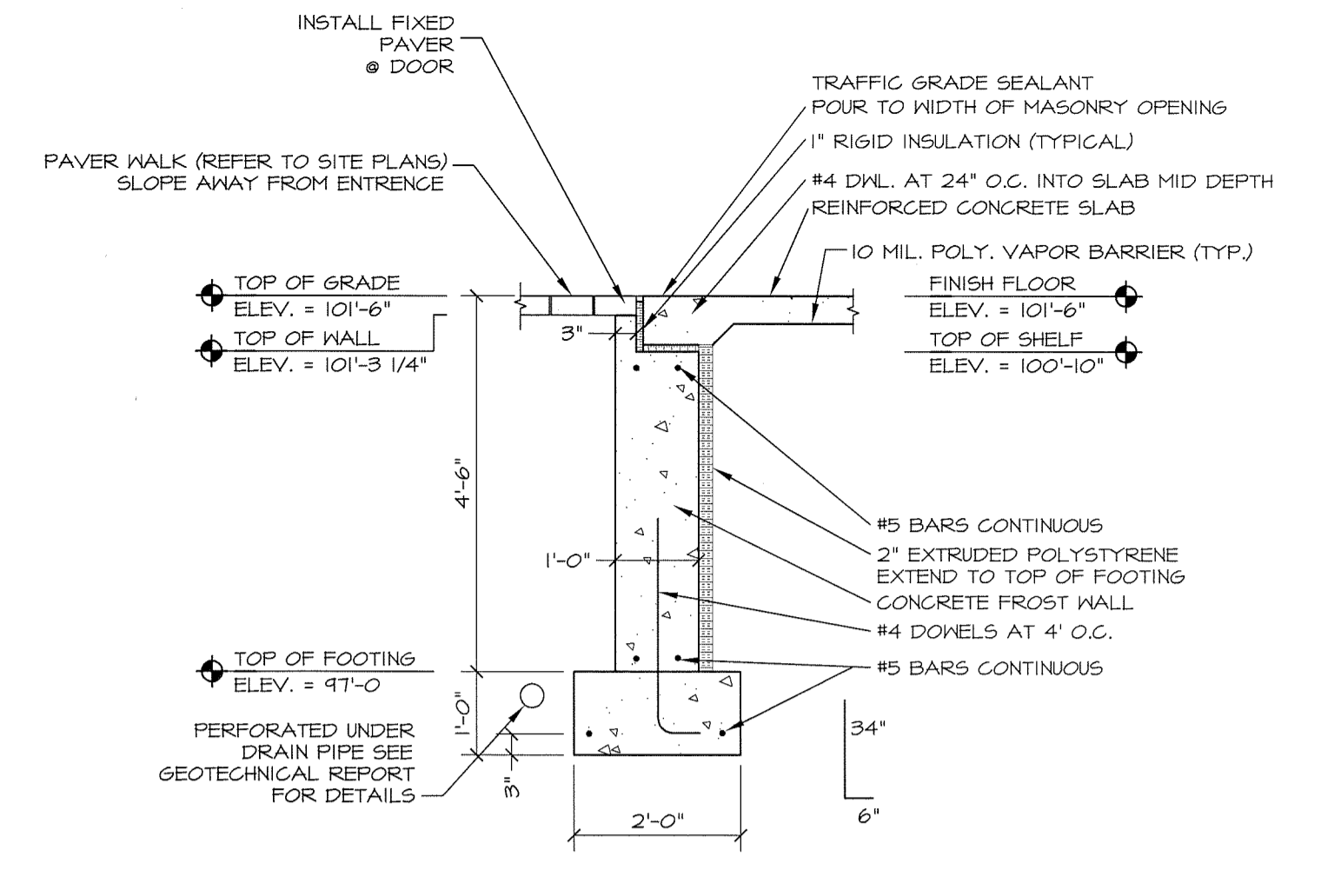


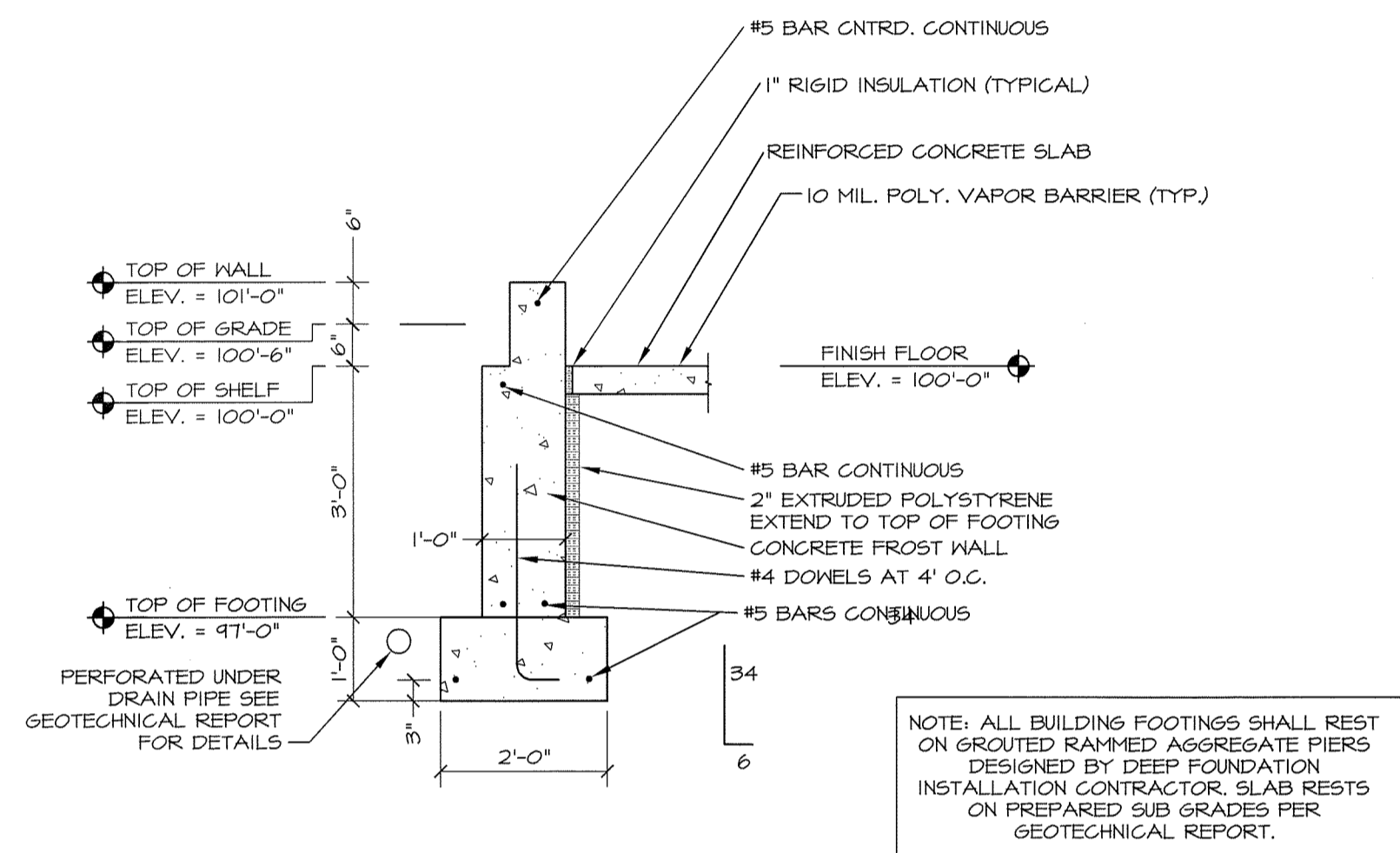
1 ELEVATOR FOUNDATION AND SUMP SECTION  
1/2" = 1'-0"



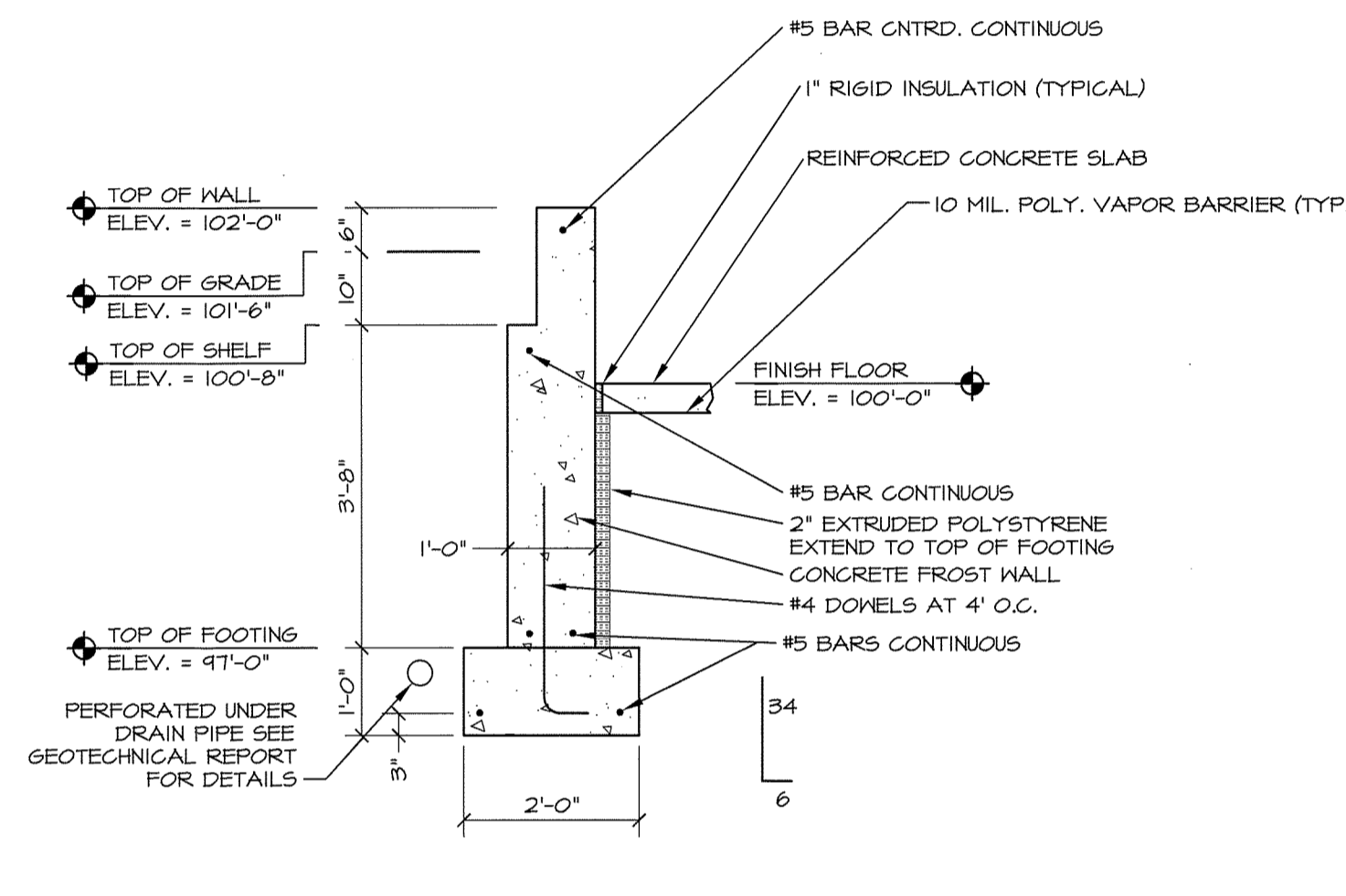
2 ELEVATOR FOUNDATION AND SUMP SECTION  
1/2" = 1'-0"



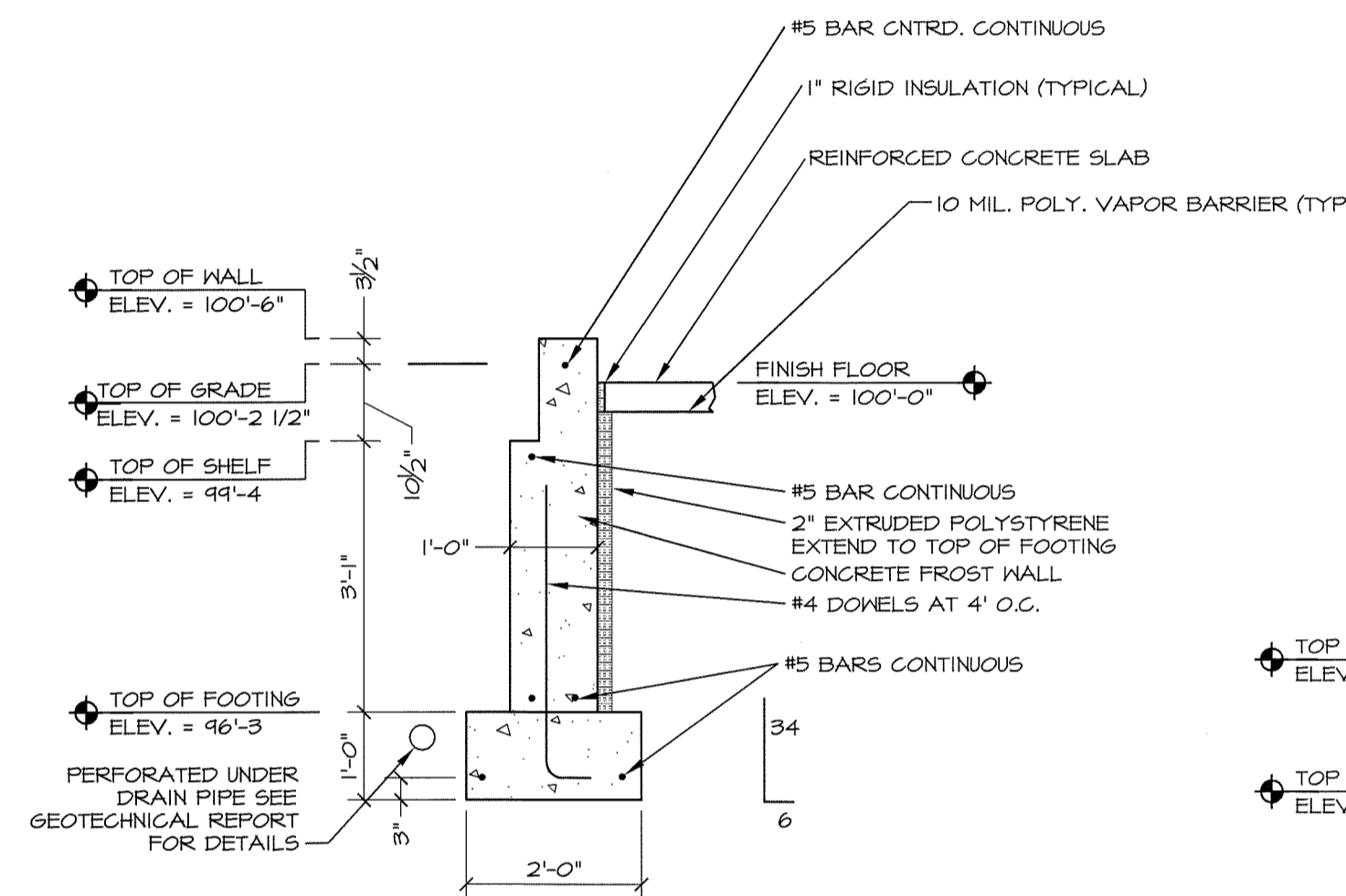
3 ENTRY DETAIL  
1/2" = 1'-0"



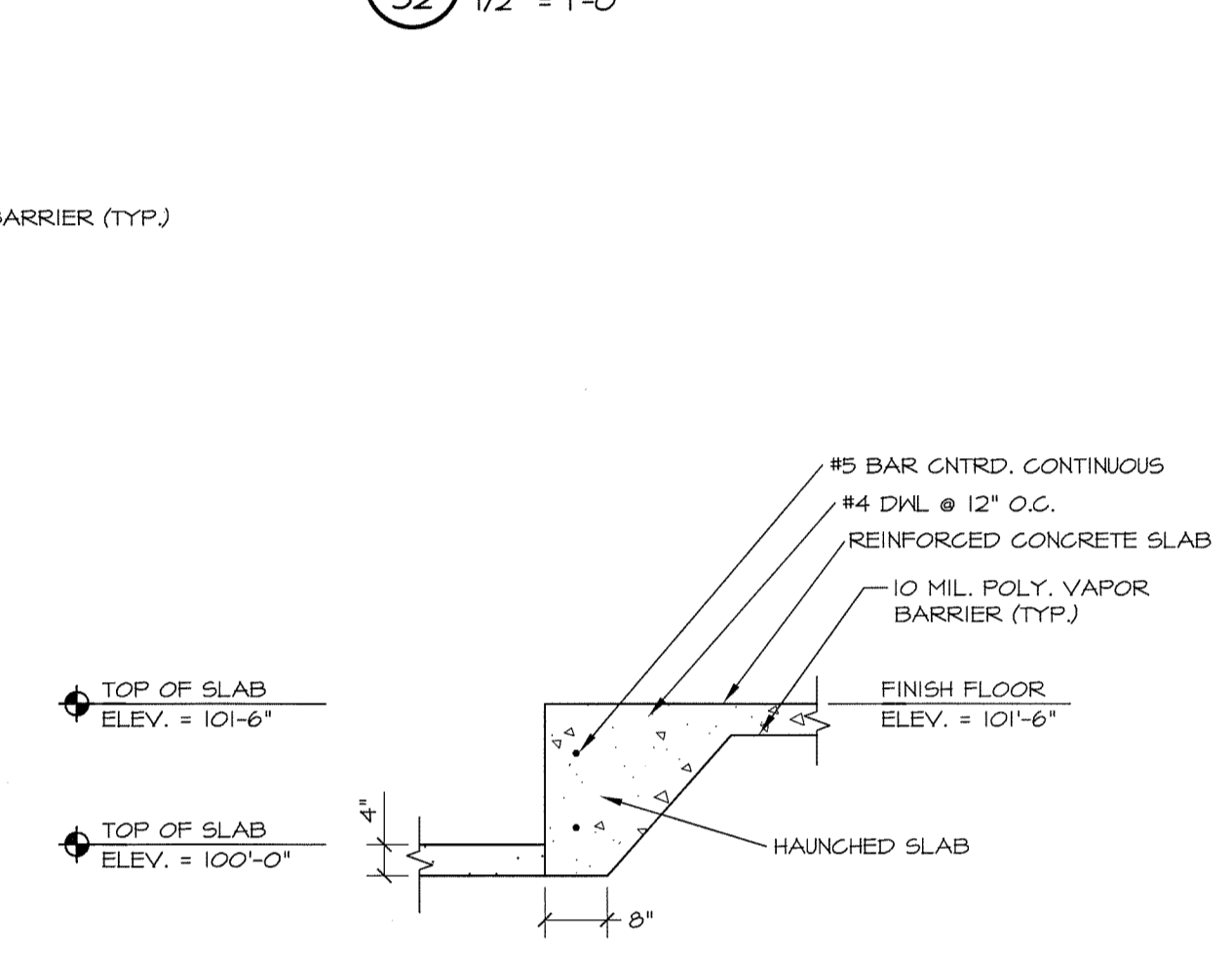
4 FROST WALL DETAIL  
1/2" = 1'-0"



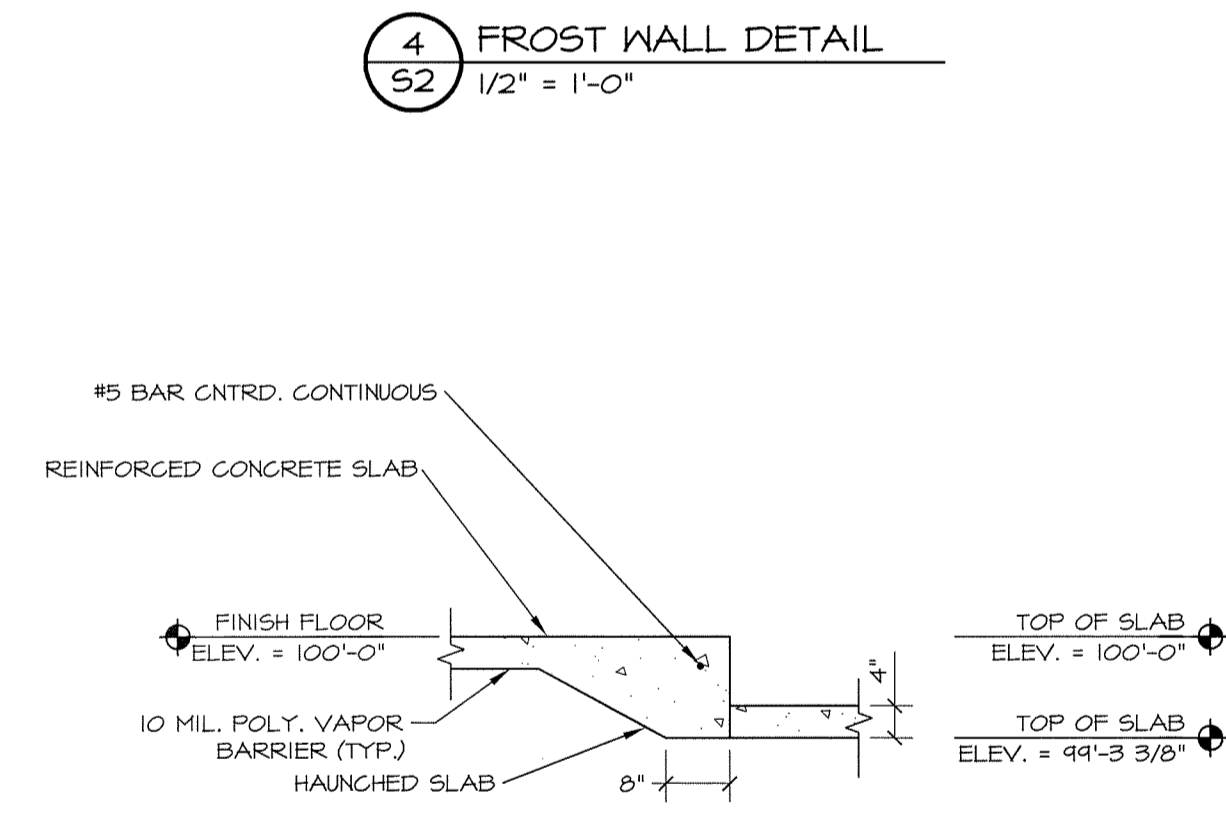
5 FROST WALL DETAIL  
1/2" = 1'-0"



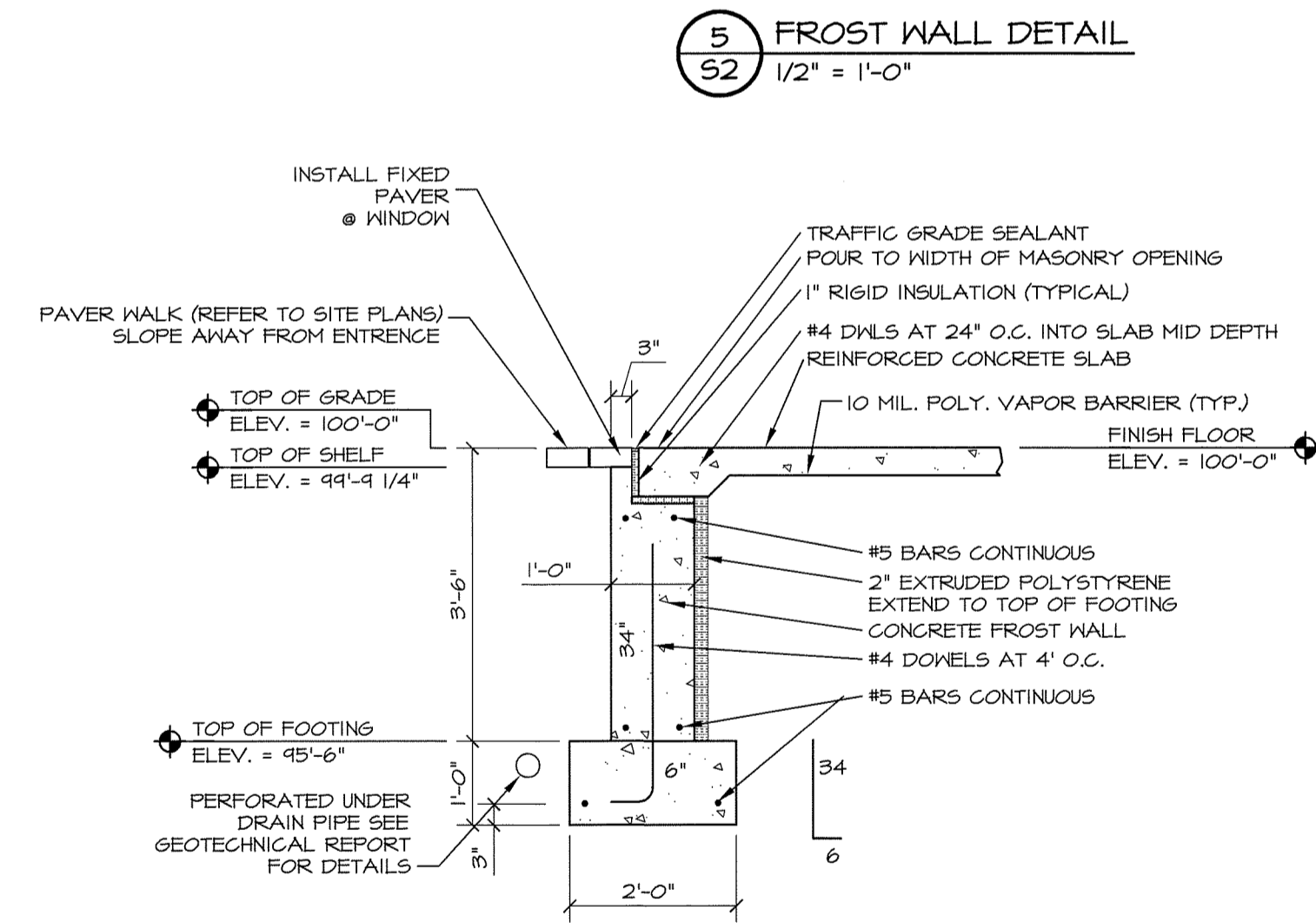
6 FROST WALL DETAIL  
1/2" = 1'-0"



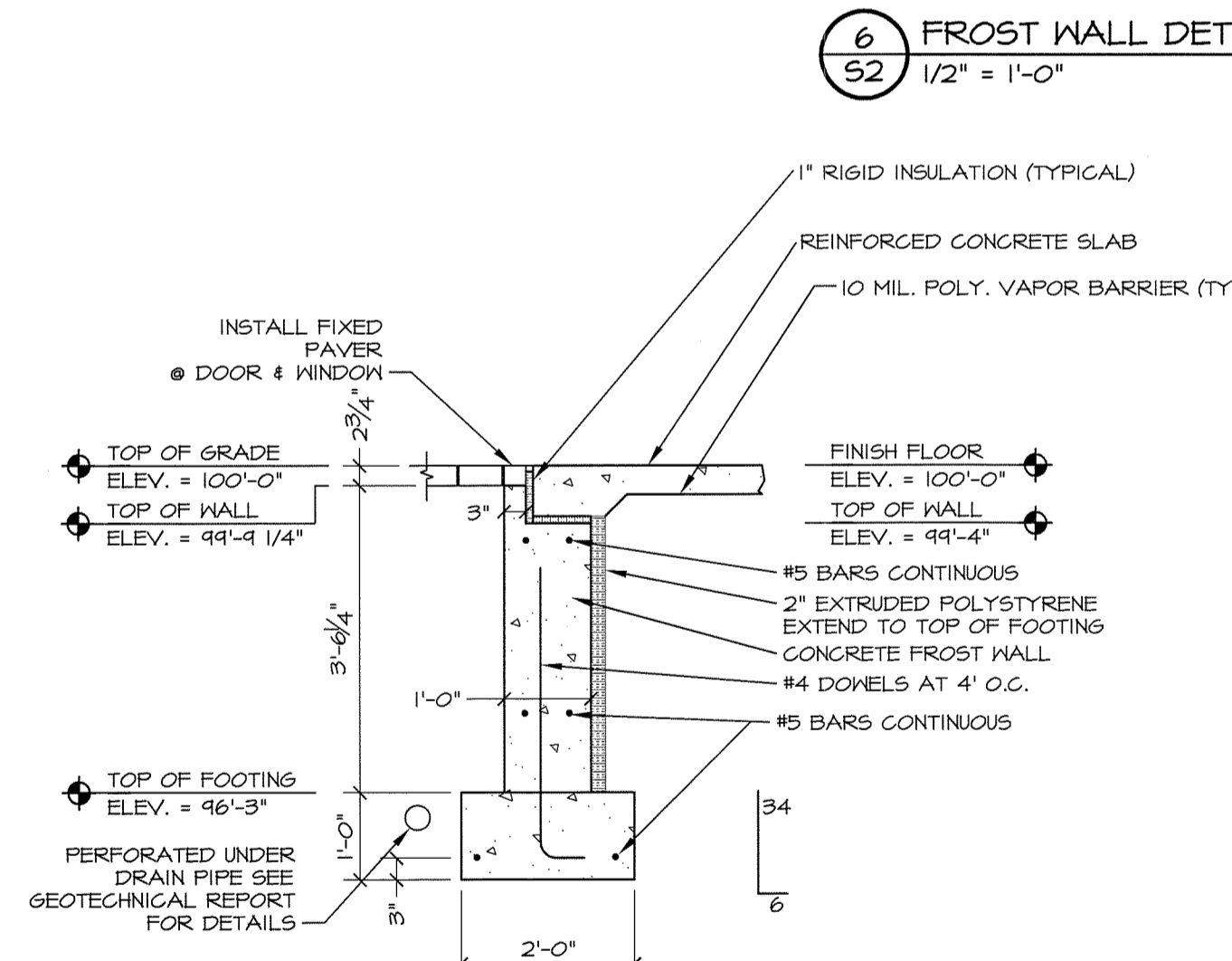
7 INTERIOR SLAB DETAIL  
1/2" = 1'-0"



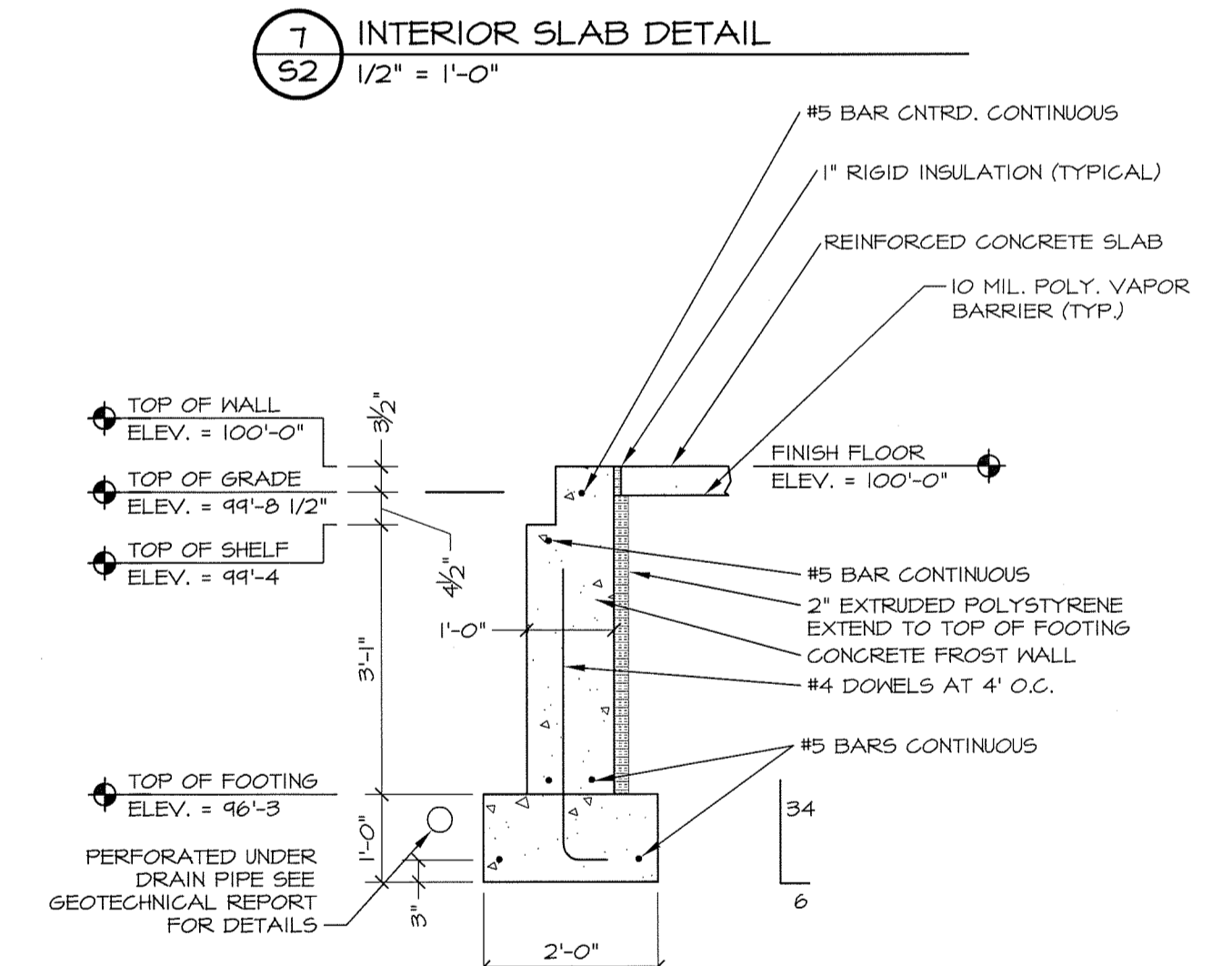
8 RESIDENCE DOORWAY DETAIL AT 4" SLAB  
1/2" = 1'-0"



9 FROST WALL DETAIL  
1/2" = 1'-0"



10 ENTRY DETAIL  
1/2" = 1'-0"



11 FROST WALL DETAIL  
1/2" = 1'-0"

6' x 24" CONTINUOUS FOOTING SCHEDULE

TYPE	SIZE WIDTHxLENGTHxDEPTH	REINFORCING						
		TOP LONG. REINF.		BOT. LONG. REINF.		TRANSVERSE		
		SEGMENT (FT)	BAR	SEGMENT (FT)	BAR	SEGMENT (FT)	TOP BAR	BOT. BAR
F6x24	6'-0"x24'-0"x2'-0"	1, 0.0 - 24.0	(6) #5	1, 0.0 - 24.0	(12) #7	1, 0.0 - 24.0	(24) #5	(35) #6

INTERIOR FOOTING SCHEDULE

8' x 19.6" CONTINUOUS FOOTING SCHEDULE

TYPE	SIZE WIDTHxLENGTHxDEPTH	REINFORCING (NOTE: START SEGMENT PAGE SOUTH)						
		TOP LONG. REINF.		BOT. LONG. REINF.		TRANSVERSE		
		SEGMENT (FT)	BAR	SEGMENT (FT)	BAR	SEGMENT (FT)	TOP BAR	BOT. BAR
F6x20	8'-0"x18'-2"x2'-0"	1, 0.0 - 19.67	(6) #5	1, 0.0 - 19.67	(12) #7	1, 0.0 - 19.67	(20) #5	(24) #6

INTERIOR FOOTING SCHEDULE

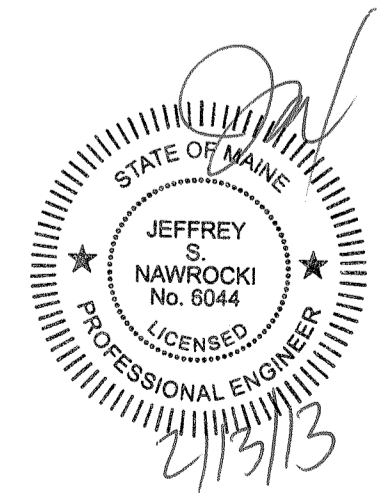
REVISION SCHEDULE	
DATE	REVISION DESCRIPTION
01-30-13	REVISE TITLE BLOCK
02-11-13	REVISE FND. FOOTING SIZE AND BASE PLATES
02-15-13	REVISE FND REINF. AND ADD PERIMETER DRAIN

**COPECHEE**  
CONSTRUCTION CORPORATION  
11 CORPORATE DRIVE, BELMONT NH 03220  
PHONE (603) 327-9896 FAX (603) 327-9191

FOUNDATION SECTIONS

PROJECT: COMMERCIAL & MAPLE STREET MIXED USE CONSTRUCTION PORTLAND ME.

DATE: 02-13-13  
SCALE: VARIES  
DRAWN BY: E.J.L.  
SHEET: 22



© COPYRIGHT 2012 BY O.C.C.