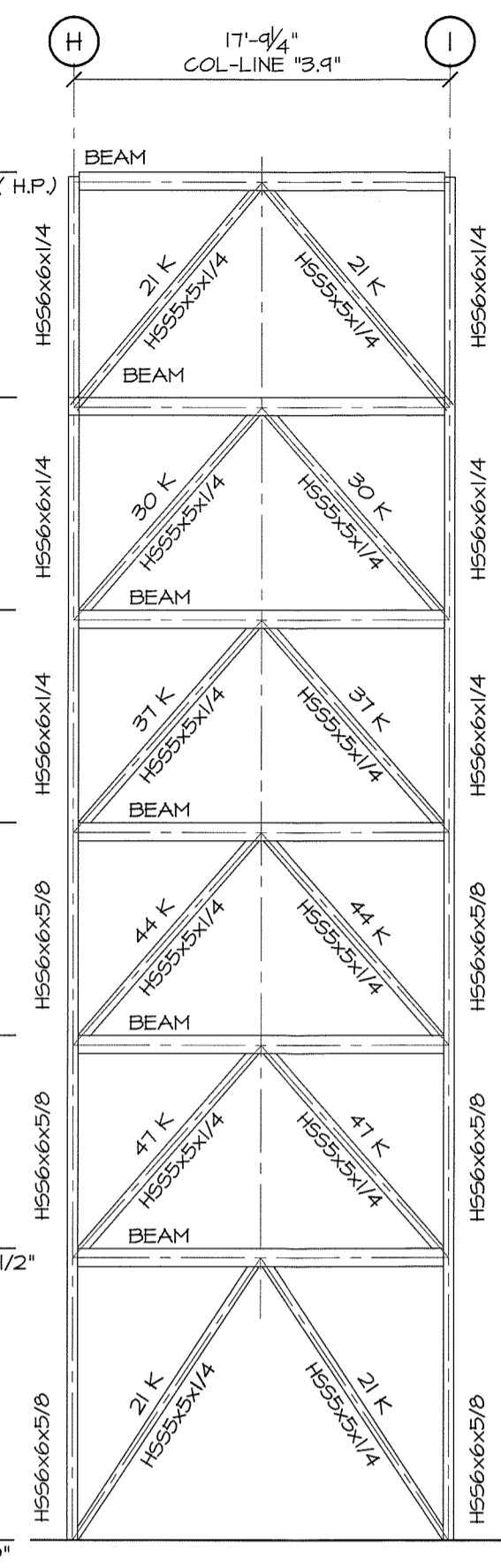
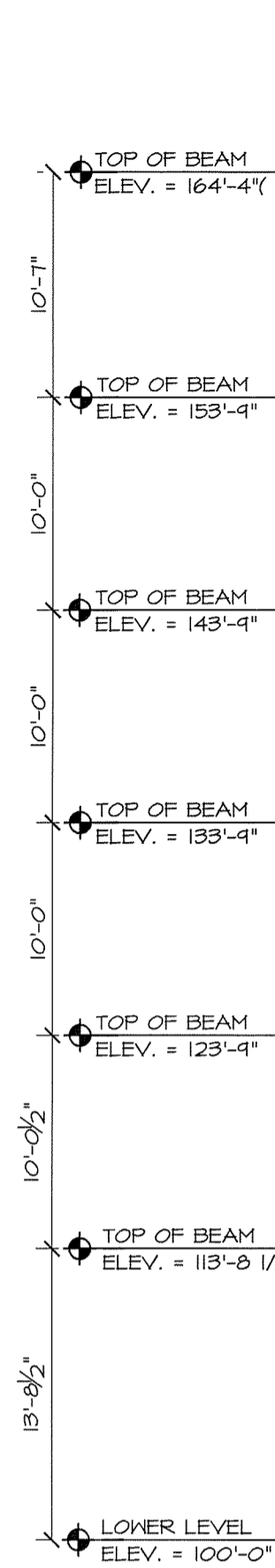
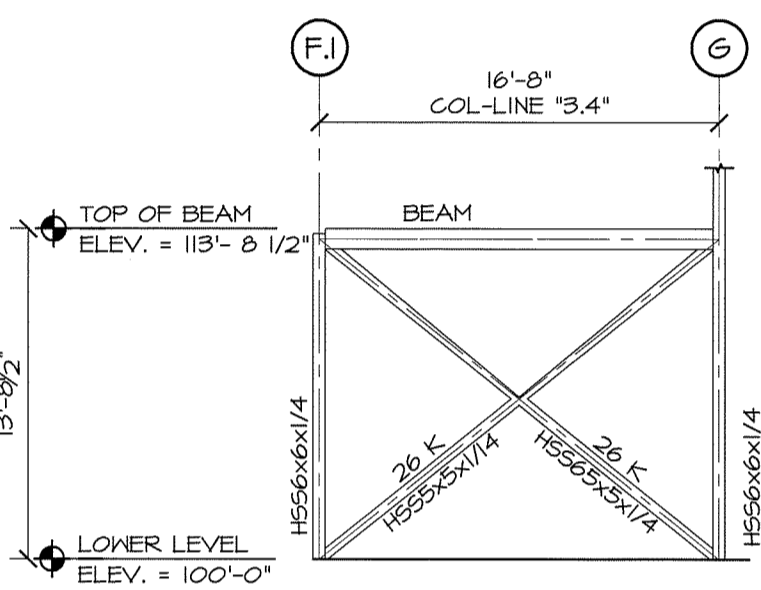


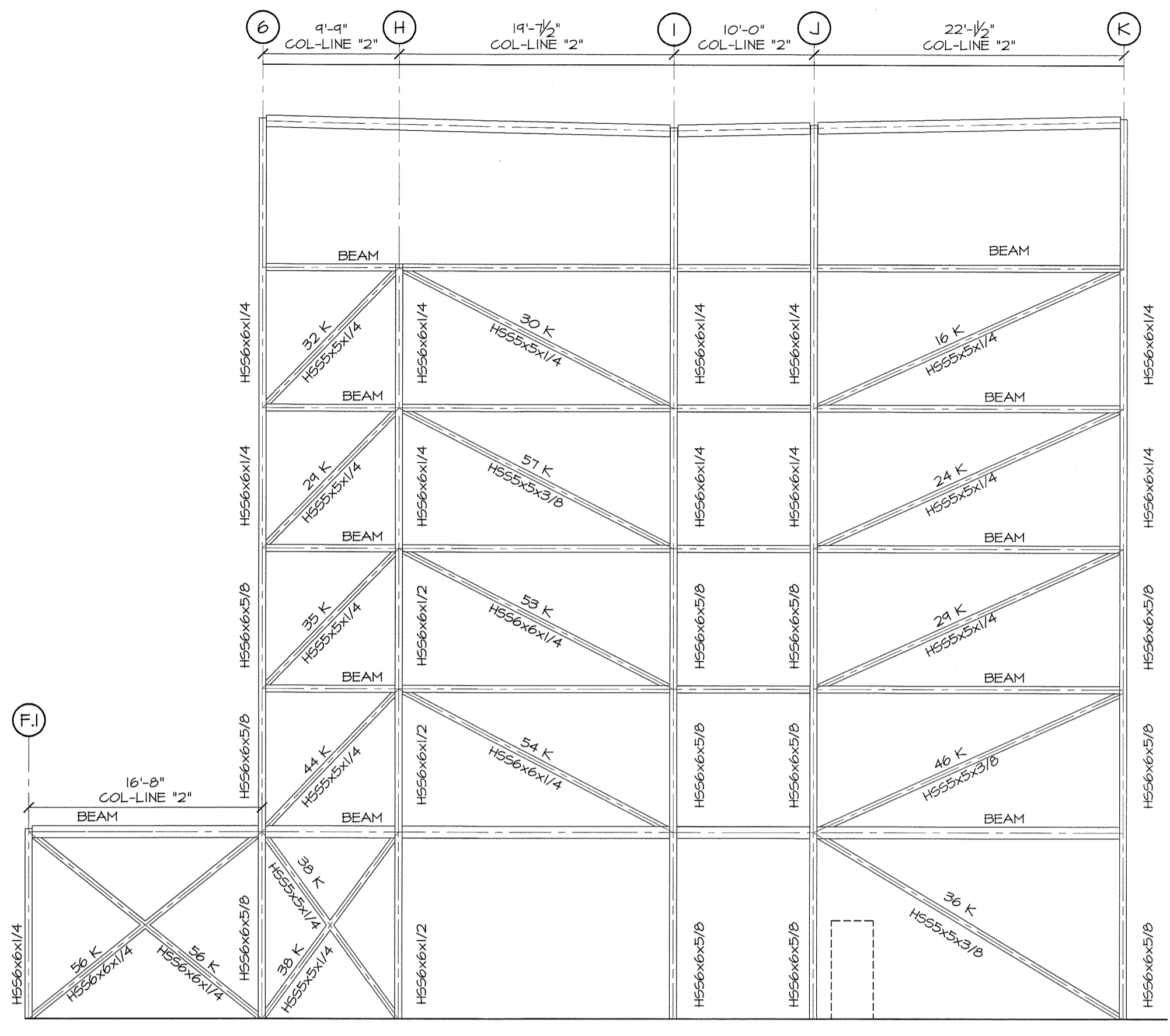
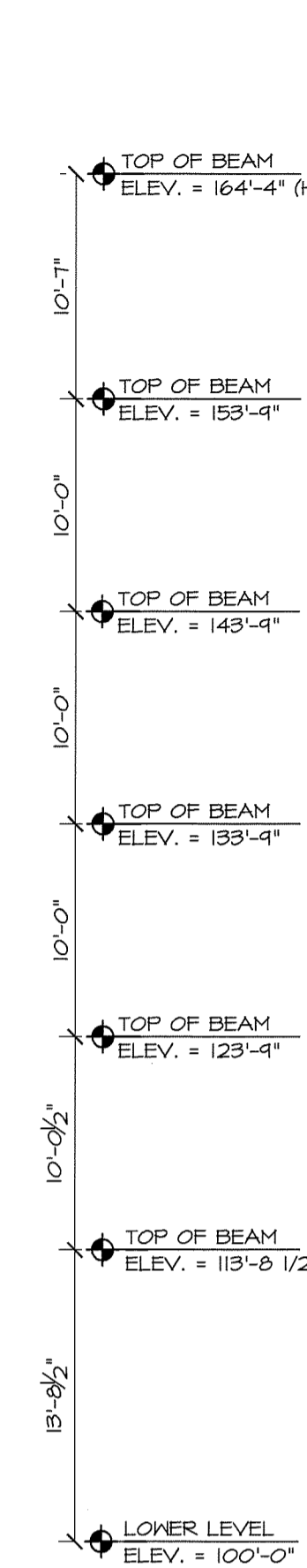
BRACED FRAME (8) ELEV.
1/8" = 1'-0"



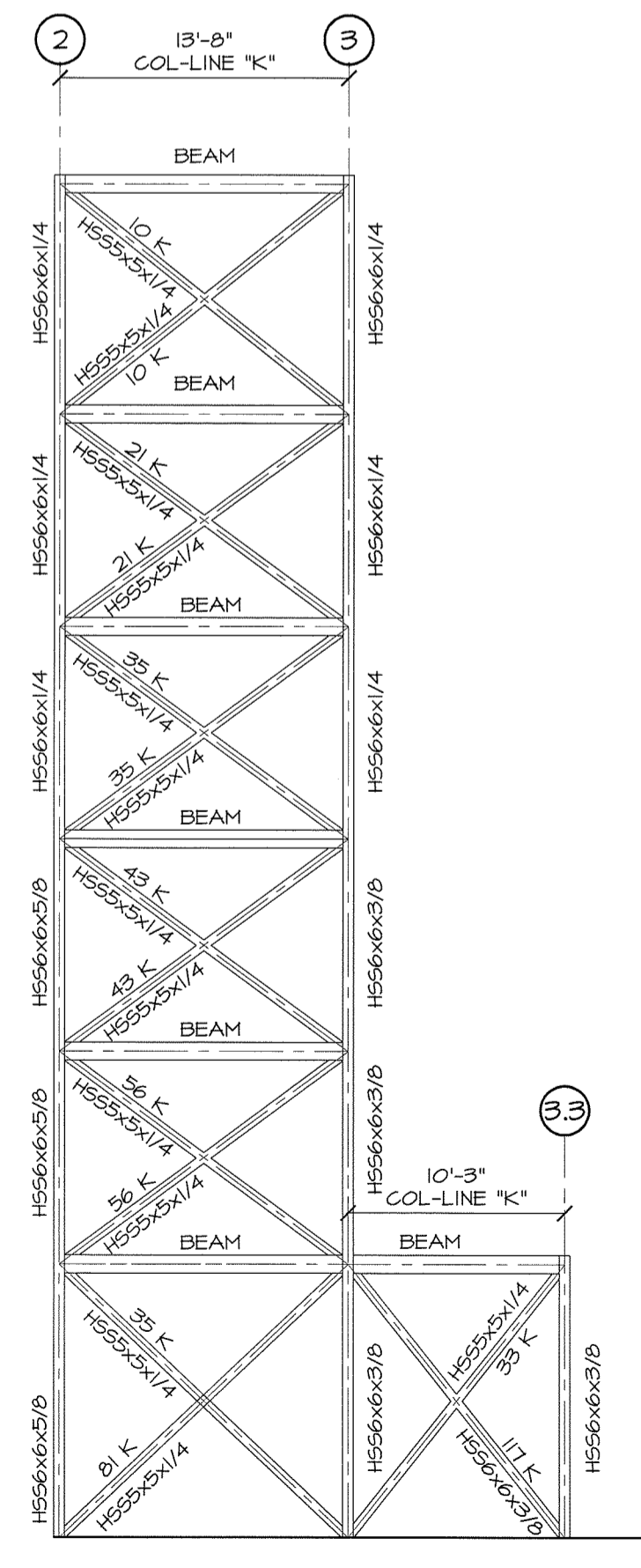
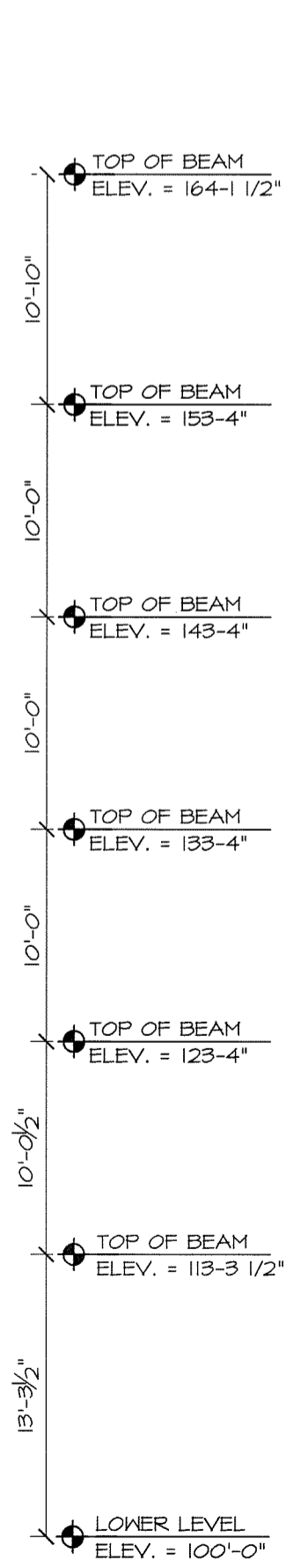
BRACED FRAME (9) ELEV.
1/8" = 1'-0"



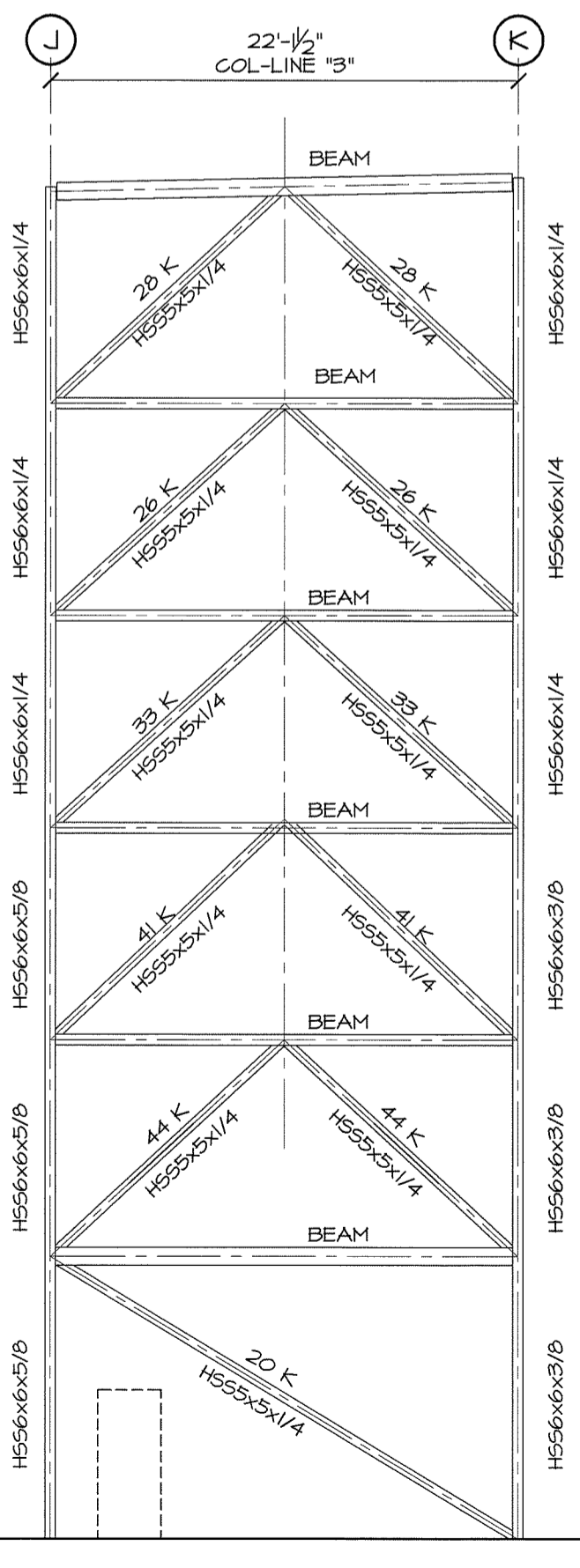
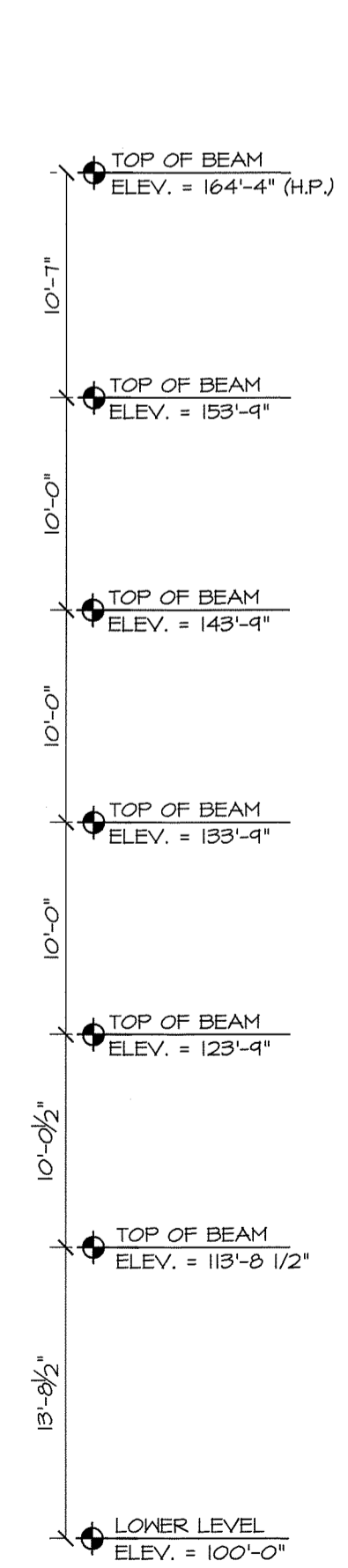
BRACED FRAME (10) ELEV.
1/8" = 1'-0"



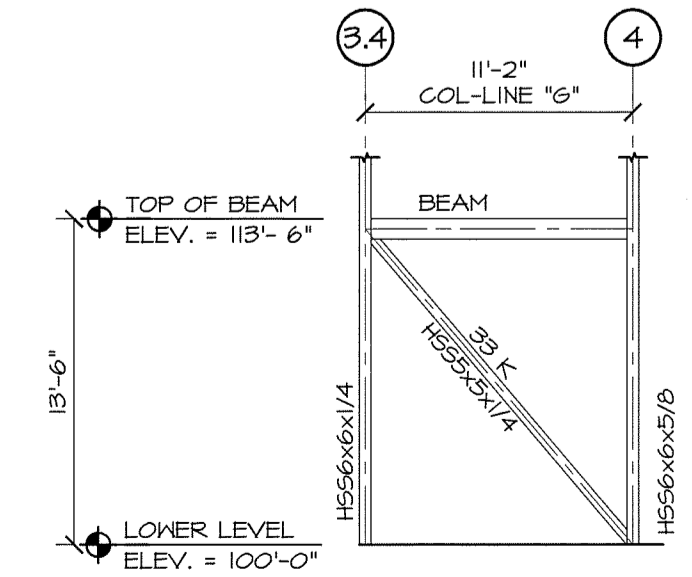
BRACED FRAME (11) ELEV.
1/8" = 1'-0"



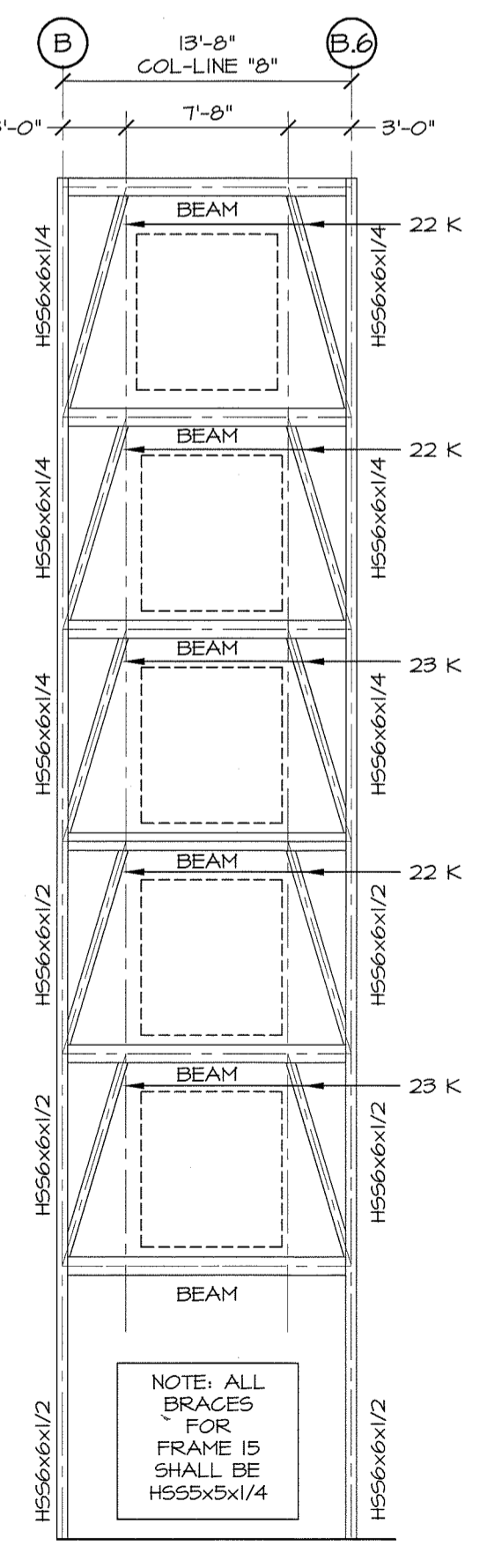
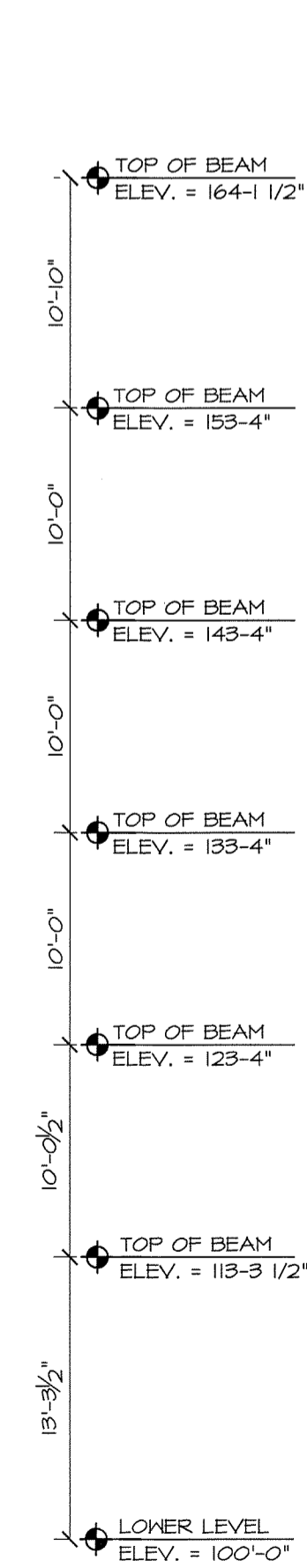
BRACED FRAME (12) ELEV.
1/8" = 1'-0"



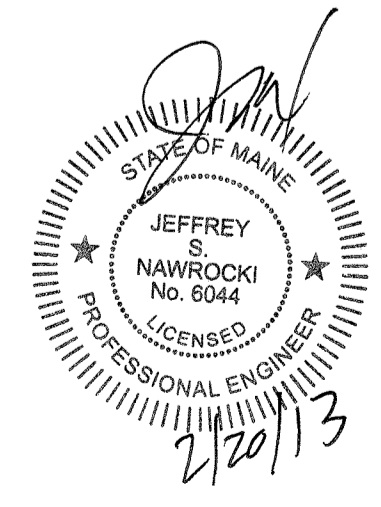
BRACED FRAME (13) ELEV.
1/8" = 1'-0"



BRACED FRAME (14) ELEV.
1/8" = 1'-0"



BRACED FRAME (15) ELEV.
1/8" = 1'-0"



REVISION SCHEDULE	
DATE	REVISION DESCRIPTION
01-30-13	UPDATE BRACE FRAMING AND REVISE TITLE BLOCK
02-18-13	UPDATE FLOOR FRAMING PER LATERAL FRAMING CHANGES
02-20-13	PERMIT

COPECHED
CONSTRUCTION CORPORATION
11 CORPORATE DRIVE, BELMONT NH 03220
PHONE (603) 327-9090 FAX (603) 327-9191

BRACED FRAME ELEVATIONS

PROJECT: COMMERCIAL & MAPLE STREET MIXED USE DEVELOPMENT PORTLAND ME.

DATE: 02-20-13
SCALE: 1/8" = 1'-0"
DRAWN BY: E.J.L.

S14
SHEET