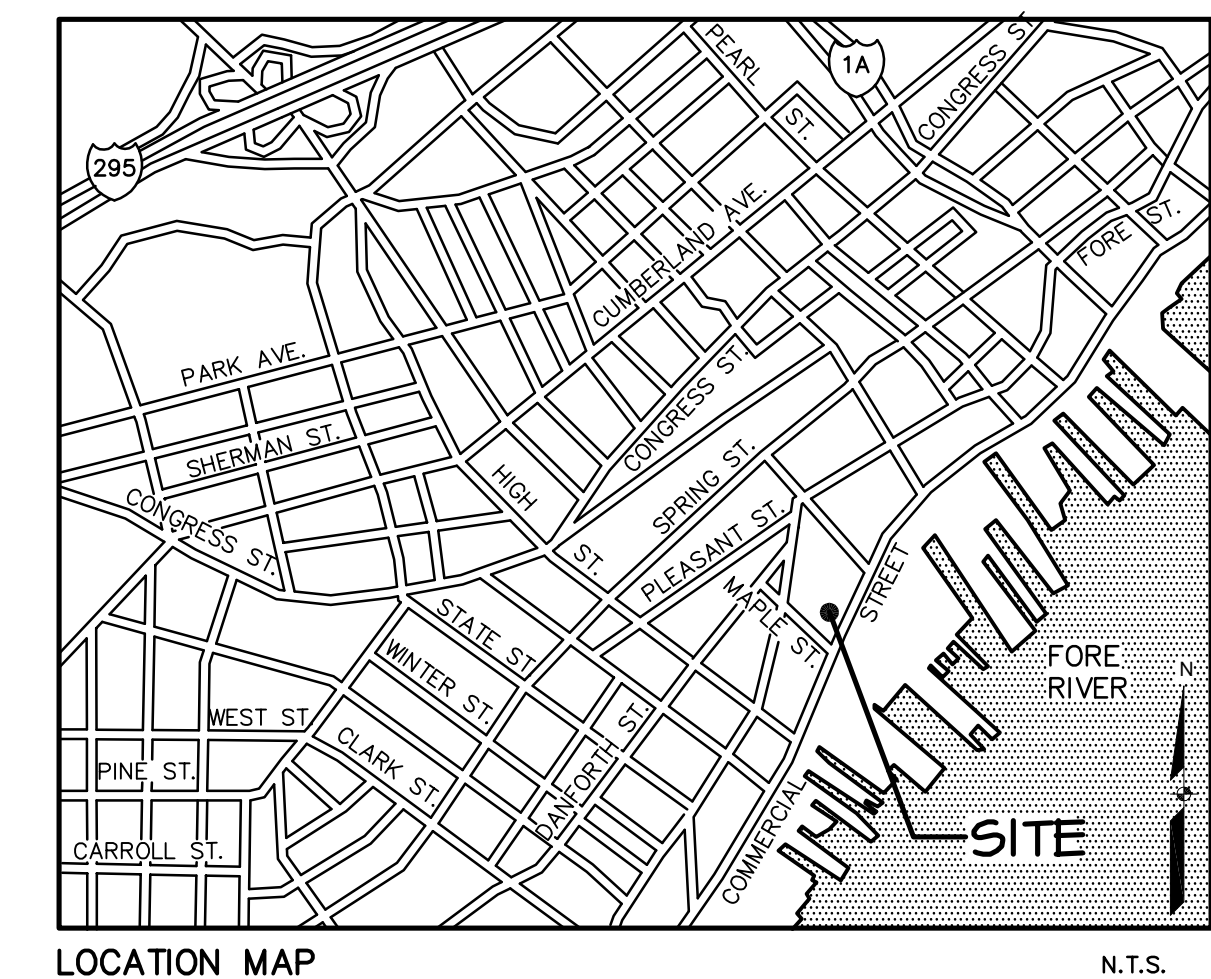
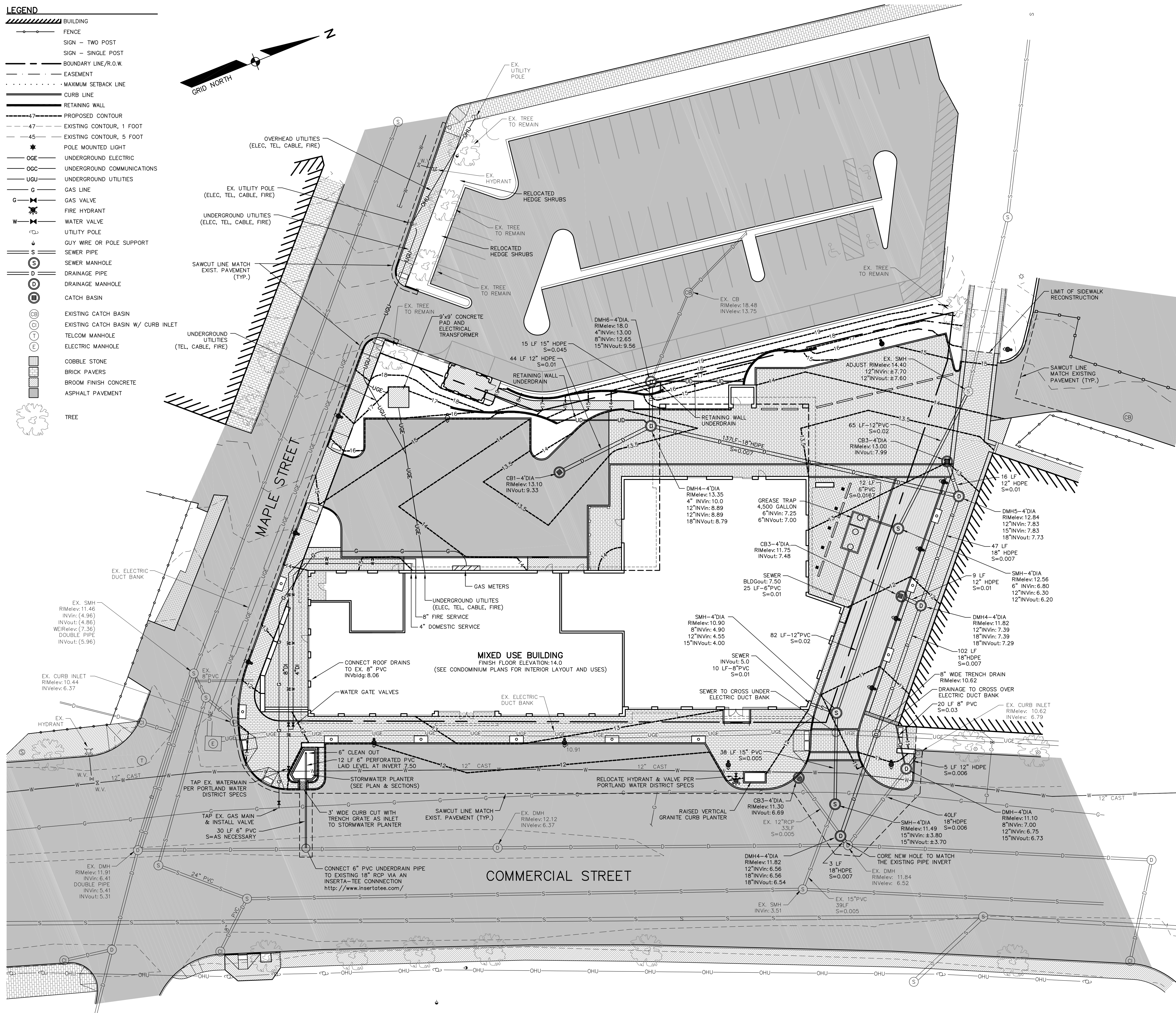
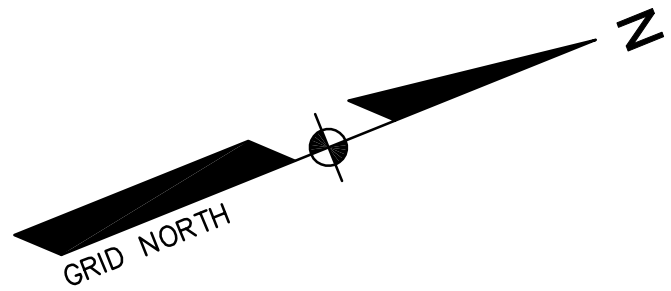


**LEGEND**

- ▨ BUILDING
- FENCE
- SIGN - TWO POST
- SIGN - SINGLE POST
- BOUNDARY LINE/R.O.W.
- EASEMENT
- MAXIMUM SETBACK LINE
- CURB LINE
- RETAINING WALL
- - - 47' PROPOSED CONTOUR
- - - 47' EXISTING CONTOUR, 1 FOOT
- - - 45' EXISTING CONTOUR, 5 FOOT
- ★ POLE MOUNTED LIGHT
- OGE UNDERGROUND ELECTRIC
- OGC UNDERGROUND COMMUNICATIONS
- UGU UNDERGROUND UTILITIES
- G GAS LINE
- G VALVE GAS VALVE
- FHY FIRE HYDRANT
- W WATER VALVE
- UP UTILITY POLE
- GUY WIRE OR POLE SUPPORT
- S SEWER PIPE
- SMH SEWER MANHOLE
- D DRAINAGE PIPE
- DMH DRAINAGE MANHOLE
- CB CATCH BASIN
- CB EXISTING CATCH BASIN
- CB EXISTING CATCH BASIN W/ CURB INLET
- TM TELCOM MANHOLE
- EM ELECTRIC MANHOLE
- COB COBBLE STONE
- BRK BRICK PAVERS
- BFC BROOM FINISH CONCRETE
- ASP ASPHALT PAVEMENT
- TREE



**GENERAL NOTES:**

- ALL WORK WITHIN THE STREET RIGHT OF WAY WILL MEET THE STANDARDS IN THE CITY OF PORTLAND'S DESIGN AND TECHNICAL MANUALS.
- GREASE TRAP CALCULATIONS:**  
THE STATE OF MAINE SUBSURFACE WASTEWATER DISPOSAL RULES ARE UTILIZED TO CALCULATE THE AVERAGE DAILY PROCESS FLOW FROM THE FACILITY WITH NO SANITARY OR OTHER EXTRANEOUS WASTES FLOWING THROUGH THE TRAP.  
**PROCESS FLOW CALCULATION:**  
EQUATION:  $Q = (M)(G)(ST)(LF)$ , WHERE:  
Q IS THE LIQUID CAPACITY OF EXTERNAL GREASE INTERCEPTOR IN GALLONS  
M IS THE TOTAL NUMBER OF MEALS SERVED PER DAY  
G IS THE GALLONS OF WASTEWATER PER MEAL, TYP. 2.0 GALLONS  
ST IS THE STORAGE CAPACITY, TYP. 2  
LF IS A LOADING FACTOR DEPENDING ON TYPE OF FACILITIES PRESENT  
LF IS 1.0 WITH DISH WASHING  
LF IS 0.5 WITHOUT DISH WASHING  
  
MEALS PER DAY: HOTEL 50 SEATS AT 2 MEALS PER DAY = 100 MEALS  
RESTAURANT LOUNGE: 79 SEATS AT 2 MEALS PER DAY = 158 MEALS  
RESTAURANT DINING: 158 SEATS AT 3 MEALS PER DAY = 474 MEALS  
TOTAL MEALS PER DAY = 730 MEALS  
  
PROCESS FLOW  $Q = (730)(2.0)(2)(1.0) = 2,920$  GALLONS  
**GREASE TRAP SIZING:**  
CHAMBER "A" (3 OF TANK VOLUME) MUST BE EQUIVALENT TO THE AVERAGE DAILY PROCESS FLOW  
TANK VOLUME = 4,500 GALLONS  
CHAMBER A = 2,980 GALLONS  
CHAMBER B = 1,470 GALLONS
- EXISTING TREES INDICATED TO REMAIN ARE SUBJECT TO REPLACEMENT REQUIREMENTS. SEE THE LANDSCAPE OR DEMOLITION PLAN FOR TREE PRESERVATION AND/OR REPLACEMENT NOTES.

DATE	REVISION DESCRIPTION	BY
01-15-13	REVISED PER CITY STAFF AND HISTORICAL/PLANNING BOARD COMMENTS	BJB
02-01-13	REVISED PER PLANNING BOARD CONDITIONS OF APPROVAL	BJB
02-05-13	REVISED PER PLANNING BOARD CONDITIONS OF APPROVAL	BJB

**COPECHEE**  
CONSTRUCTION CORPORATION  
11 CORPORATE DRIVE, BELMONT, NH 03220  
PHONE (603) 327-9990 FAX (603) 327-9191

**UTILITY PLAN**

PROJECT: **COMMERCIAL & MAPLE STREET MIXED USE DEVELOPMENT**  
PORTLAND, ME

DATE: 10-22-12  
SCALE: 1"=20'  
DRAWN BY: BJB  
**C05**  
SHEET: 5 OF 14

