

HVAC UNIT SCHEDULE

| TAG | Lennox / McQuay Model | Unit | | | | | | | | | | Cooling | | | | | Gas Heating | | | | Notes | | | |
|---------|-----------------------|------------|------|------------|---------------|--------------------------|--------------------------|-----------------|------------|----------|----------|----------|----------|----------------|-------------------|-----------------|-------------|----|----------------------|-------|-------|-------------------------|-------------------------|----------------|
| | | Electrical | | Efficiency | | Supply Fan | | | EAT | | | LAT | | Total Capacity | Sensible Capacity | Ambient DB (°F) | Compressor | | Type | Size | | Stages | Total Capacity (Btu/hr) | |
| Voltage | MCA (A) | MROPD (A) | IEER | IEER | Airflow (CFM) | ESP (inH ₂ O) | TSP (inH ₂ O) | Motor Size (HP) | Efficiency | EDB (°F) | EWB (°F) | LDB (°F) | LWB (°F) | | | | Refrigerant | | | | | | | |
| HVAC-1 | LG-H08S4T | 208/60/3 | 32 | 45 | 12.5 | 15.5 | 2000 | 0.75 | 0.95 | 1 | 2' Merv7 | 80 | 67 | 57.5 | 56.6 | 63300 | 47475 | 95 | 2 Stages | R410A | Gas | 65 MBH Cr/Off | 52000 | 1,2,4,5,6,9,10 |
| HVAC-2 | DPS007A | 208/60/3 | 43.4 | 50 | 12.4 | 20.1 | 3000 | 0.75 | 1.21 | 4 | 2' Merv7 | 80 | 67 | 57 | 56.9 | 95419 | 75312 | 95 | Inverter Compressors | R410A | Gas | 300 MBH Modulating 10:1 | 240000 | 1,5,6,7,9 |
| HVAC-3 | LG-H08S4T | 208/60/3 | 31 | 45 | 12.5 | 15.5 | 2000 | 0.5 | 0.7 | 1 | 2' Merv7 | 80 | 67 | 57.5 | 56.6 | 63300 | 47475 | 95 | 2 Stages | R410A | Gas | 65 MBH Cr/Off | 52000 | 1,2,4,5,6,9,10 |
| HVAC-4 | LG-H08H-HM | 208/60/3 | 45 | 50 | 12.5 | 14 | 3000 | 0.75 | 1.11 | 2 | 2' Merv7 | 80 | 67 | 58.5 | 56.8 | 93000 | 67890 | 95 | 2 Stages | R410A | Gas | 130 MBH H/Low/Off | 104000 | 1,5,6,7,9,10 |
| HVAC-5 | DPS007A | 208/60/3 | 34.6 | 45 | 12.4 | 20.1 | 3200 | 0.75 | 1.3 | 2.3 | 2' Merv7 | 80 | 67 | 57.7 | 57.5 | 95227 | 78153 | 95 | Inverter Compressors | R410A | Gas | 300 MBH Modulating 10:1 | 240000 | 1,5,6,7,9 |
| HVAC-6 | DPS007A | 208/60/3 | 34.6 | 45 | 12.4 | 20.1 | 2750 | 0.75 | 1.18 | 2.3 | 2' Merv7 | 80 | 67 | 56.2 | 56.1 | 94264 | 71716 | 95 | Inverter Compressors | R410A | Gas | 400 MBH Modulating 10:1 | 320000 | 1,5,6,7,9 |
| HVAC-7 | DPS007A | 208/60/3 | 38.4 | 50 | 12.4 | 20.1 | 4100 | 0.75 | 1.6 | 4 | 2' Merv7 | 80 | 67 | 59.8 | 59.5 | 95057 | 90484 | 95 | Inverter Compressors | R410A | Gas | 80 MBH Modulating 5:1 | 96000 | 1,5,6,7,9 |
| HVAC-8 | LG-H08S4T | 208/60/3 | 28 | 40 | 12.5 | 15.5 | 2000 | 0.5 | 0.7 | 1 | 2' Merv7 | 80 | 67 | 58.7 | 57 | 63300 | 47475 | 95 | 2 Stages | R410A | Gas | 65 MBH Cr/Off | 52000 | 1,2,3,5,6,8,10 |
| HVAC-9 | LG-H120H-HM | 208/60/3 | 46 | 50 | 12 | 13.8 | 4000 | 0.75 | 1.34 | 3 | 2' Merv7 | 80 | 67 | 60.5 | 57.4 | 124400 | 117100 | 95 | 2 Stages | R410A | Gas | 188 MBH H/Low/Off | 144000 | 1,2,3,5,6,8,10 |
| HVAC-C1 | KGA02434D | 208/60/1 | 21 | 30 | 11.4 | 13 | 818 | 0.5 | 0.55 | 0.25 | 2' Merv7 | 80 | 67 | 57.9 | 57.2 | 24468 | 19033 | 95 | 2 Stages | R410A | Gas | 65 MBH Cr/Off | 52000 | 1,2,3,5,6,8 |
| HVAC-C2 | DPS003A | 208/60/3 | 21.7 | 30 | 13.2 | 16.5 | 1100 | 0.75 | 1.18 | 4 | 2' Merv7 | 80 | 67 | 56.4 | 56.4 | 36832 | 28344 | 95 | Inverter Compressors | R410A | Gas | 80 MBH Modulating 5:1 | 64000 | 1,2,3,5,6,7,8 |

- Notes
1. Stainless steel heat exchanger
 2. Enthelpy economizer
 3. Barometric relief dampers
 4. Power exhaust fan
 5. Disconnect switch/GFCI outlet
 6. Coil corrosion protection
 7. Dehumidification control
 8. Standard 14" roof curb
 9. Horizontal duct curb
 10. Multistage air volume

| | | | |
|----------|----------------------|----|--|
| REVISION | SCHEDULE | BY | |
| | REVISION DESCRIPTION | | |
| DATE | | | |

OPENEDGE
CONSTRUCTION CORPORATION
11 CORPORATE DRIVE, BELMONT, NH 03320
PHONE: (603) 537-9090 FAX: (603) 527-9191

MECHANICAL SCHEDULES & DETAILS

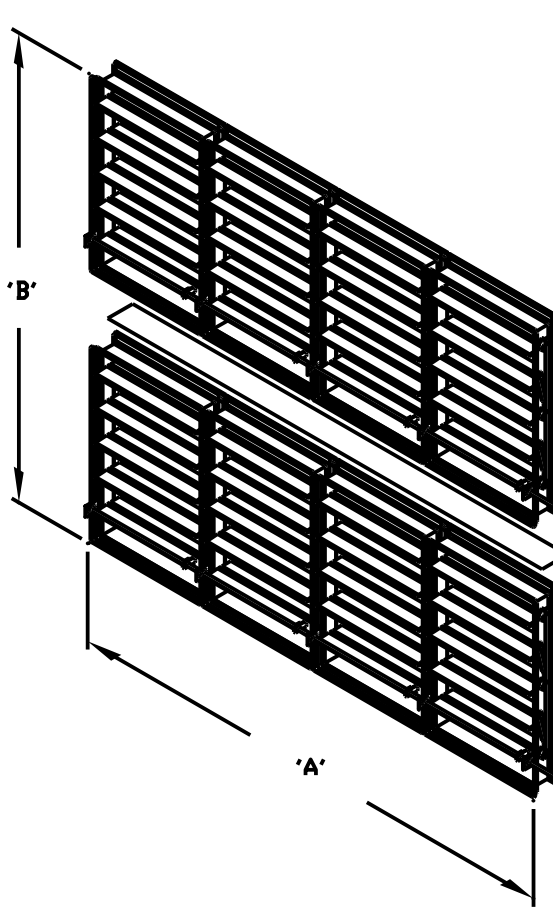
PROJECT: **COMMERCIAL & MAPLE STREET MIXED USE DEVELOPMENT**
PORTLAND, ME.

DATE: 06-06-2013
SCALE: 1/8" = 1'-0"
DRAWN BY:



- ITEM DESCRIPTION
1. ACTUATOR w/ END SWITCH (LOCATION MAY VARY).
RUSKIN'S UL LISTED FIRE DAMPER, OR GREENHECK.
ACTUATORS MAY BE FIELD INSTALLED IF PROPERLY LABELED. SEE ACTUATOR INSTALLATION INSTRUCTIONS FOR FIELD MOUNTING OF DAMPER ACTUATORS.
 2. FIRESTAT OR SP100
 3. AUXILIARY OPERATING JACK SHAFT
 4. FIRE / SMOKE DAMPER
 5. OVER CENTER LOCK
 6. SLEEVE
 7. CAULKING MATERIAL
(MAY BE ON EITHER SIDE OF DAMPER FRAME)
 8. PFMA OR CONVENTIONAL MOUNTING ANGLES
 9. S-JOINT/DUCT MATE, SLEEVE TO DUCT
 10. RUSKIN MODEL NUMBERS LISTED. APPROVED EQUAL PRODUCTS FROM GREENHECK ARE ACCEPTABLE.
 11. PROVIDE ACCESS DOORS AS REQUIRED.
 12. PROVIDE SMOKE DETECTORS.

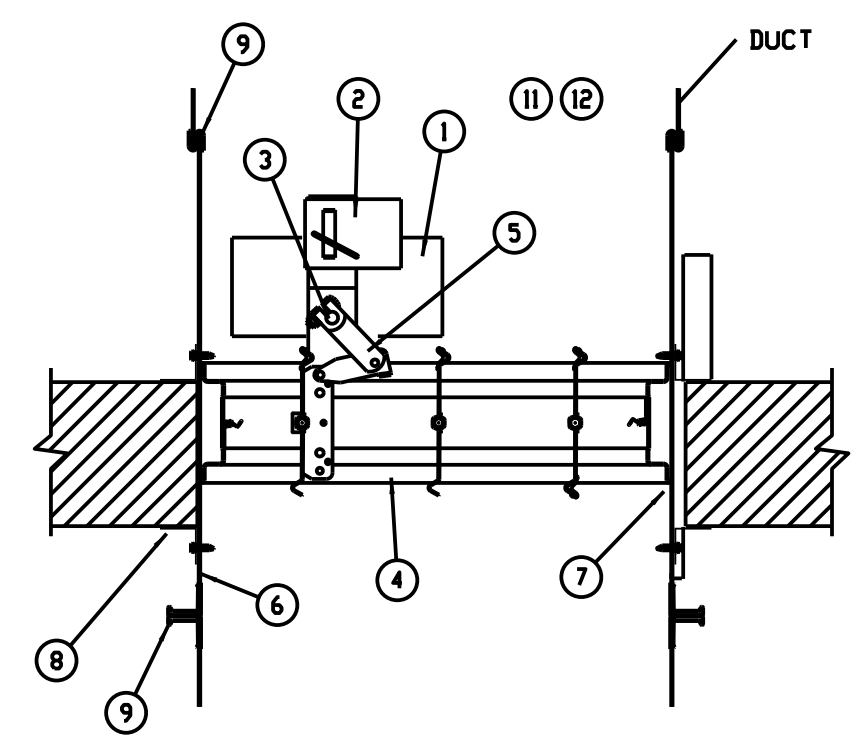
MAX UL CLASSIFIED SIZE
FSD60 DB, 60-110B, 370B, 360B, 350B, 340B



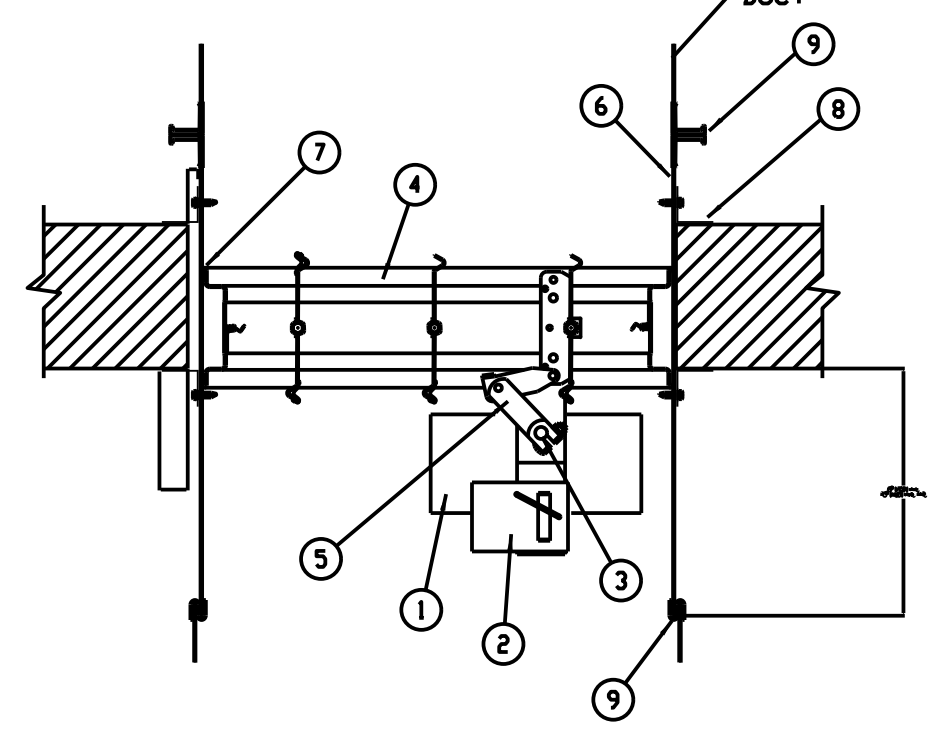
A = 126" (3200) FOR FSD360B
A = 120" (3048) FOR FSD340B, 350B, 370B, 60 DB, 60-110B

B = 122" (3099) FOR FSD360B
B = 98" (2489) FOR FSD600B, 60-110B
B = 95" (2413) FOR FSD340B, 350B, 370B

14 GAGE (2) X DAMPER
"A" DIMENSION X 5" (127) WIDE REINFORCING PLATE

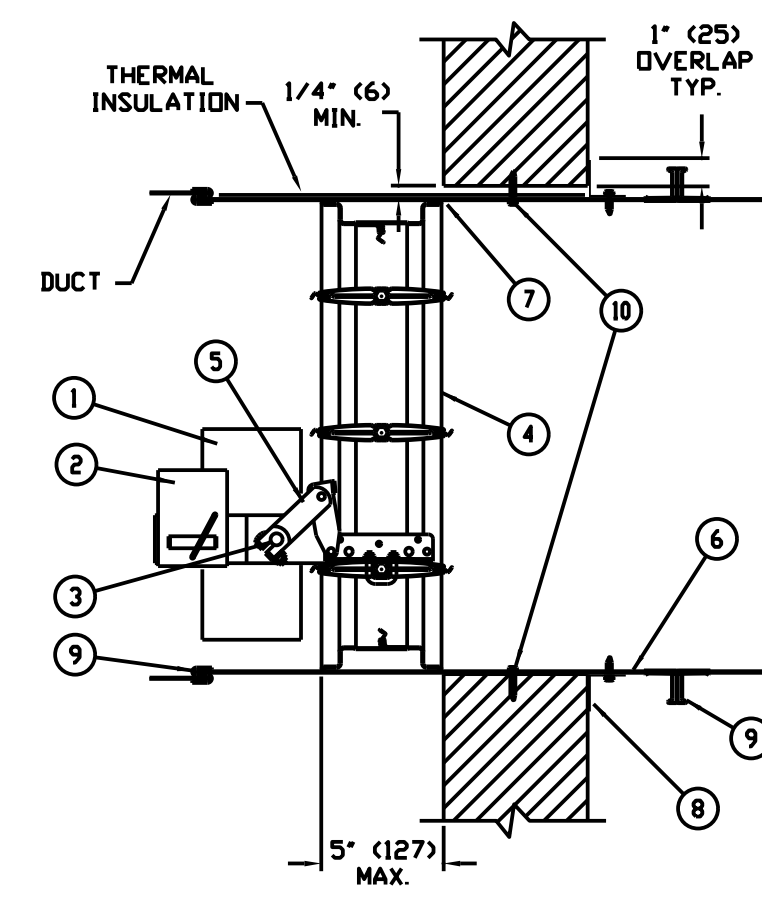


ACTUATOR ABOVE DAMPER



ACTUATOR BELOW DAMPER

FSD60 OUT OF WALL INSTALLATION



COMBINATION FD / SD INSTALLATION DETAIL

NTS