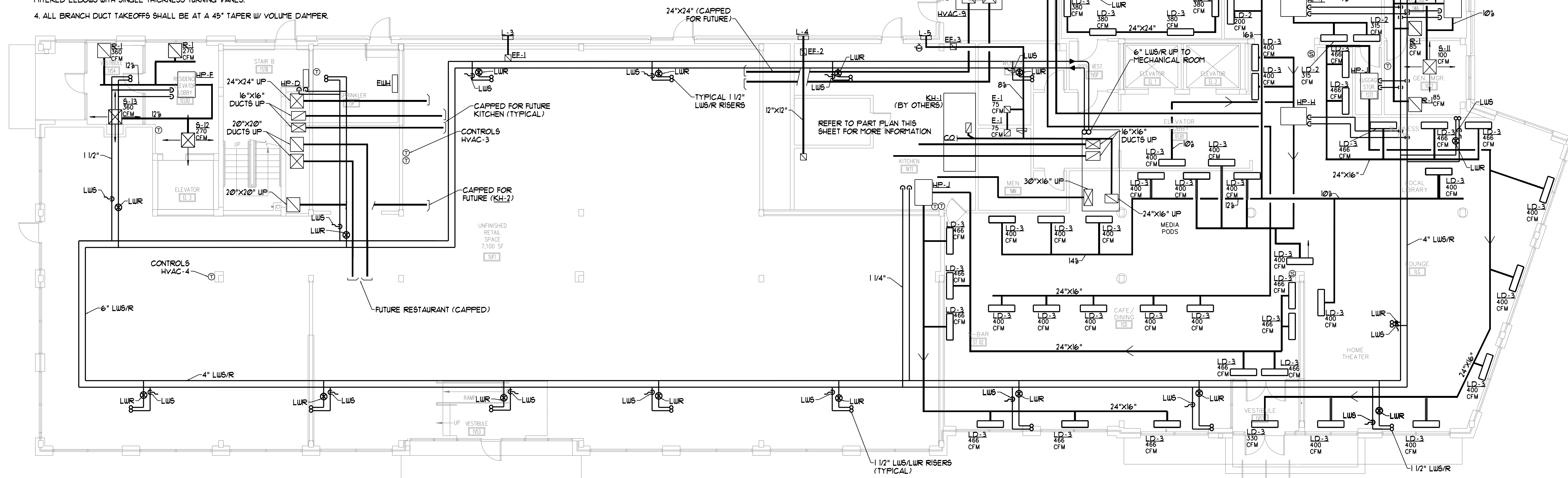


KITCHEN PART PLAN  
SCALE: 1/4" = 1'-0"

## GENERAL NOTES

1. PROVIDE 1" THICK ACUSTICAL DUCT LINER UP AND DOWNSTREAM OF ALL HVAC UNITS AND HORIZONTAL HEAT PUMPS FOR FIFTEEN (15) FEET.
2. PROVIDE BOLTED AND GASKETED CLEANOUT DOORS AT EACH FLOOR LEVEL FOR KHI AND KH2 EXHAUST DUCTS. COORDINATE WITH ACCESS PANELS INDICATED ON ARCHITECTURAL DRAWINGS.
3. 90° ELBOW SHALL HAVE A CENTERLINE RADIUS EQUAL TO 15 TIMES THE DUCT WIDTH OR MITERED ELBOWS WITH SINGLE THICKNESS TURNING VANES.
4. ALL BRANCH DUCT TAKEOFFS SHALL BE AT A 45° TAPER W/ VOLUME DAMPER.



FIRST FLOOR PLAN  
SCALE: 1/8" = 1'-0"

COPYRIGHT 2012 BY O.C.C.