

- LEGEND:**
- EXISTING TO REMAIN
 - EXISTING FIRE RATED STAIR ENCLOSURE
 - NEW WALLS
 - ▶ EGRESS POINT
 - ✕ EXIT ROUTE
 - (MT=X') MAXIMUM TRAVEL DISTANCE
 - (SM=X') SECOND MEANS OF EGRESS TRAVEL DISTANCE
 - (CP=X') MAXIMUM COMMON PATH TRAVEL DISTANCE
 - ↔ EXIT SIGN. ARROW INDICATES DIRECTION OF TRAVEL
 - ⚡ EXISTING EMERGENCY LIGHTING
 - ◆ 1 HR FIRE RATED PARTITION

- NOTES:**
1. SEE DRAWING A-001 FOR GENERAL NOTES, LEGEND, AND ABBREVIATIONS.
 2. ALL WORK SHALL BE IN STRICT CONFORMANCE WITH THE REQUIREMENTS OF THE FOLLOWING STANDARDS:
 - 2.1. INTERNATIONAL BUILDING CODE, 2009 EDITION
 - 2.2. NFPA 101 - LIFE SAFETY CODE, 2015 EDITION
 - 2.3. ABA - ACCESSIBILITY STANDARDS, 2015 EDITION
 3. CONTRACTOR SHALL RETAIN CLEAR PATHS TO BUILDING EXITS AND FIRE EXTINGUISHERS AT ALL TIMES DURING CONSTRUCTION.
 4. INTERIOR RENOVATIONS IN THIS SCOPE OF WORK WILL NOT AFFECT EXISTING MEANS OF EGRESS AND WILL NOT INCREASE OCCUPANCY LOAD IN THE WORK AREA. EXISTING FIRE EXTINGUISHER LOCATIONS SHALL REMAIN, UNLESS CLEARLY INDICATED OTHERWISE.

INTERNATIONAL BUILDING CODE SUMMARY:

304 BUSINESS GROUP B: OFFICES, CUBICLES, CONFERENCE ROOM AND STORAGE AREAS
 602 CONSTRUCTION CLASSIFICATION: N/A, BUILDING FOOTPRINT AND HEIGHT TO REMAIN THE SAME
 708 FIRE PARTITIONS
 708.4 CONTINUITY. FIRE PARTITIONS SHALL EXTEND FROM THE TOP OF THE FLOOR ASSEMBLY TO THE UNDERSIDE OF THE ROOF DECK ABOVE, AND SHALL BE SECURELY ATTACHED THERETO.

OCCUPANCY USE GROUP: BUSINESS OCCUPANCY (B)
BUILDING CONSTRUCTION TYPE: TYPE IA (FULLY SPRINKLERED BUILDING)

NFPA 101 - LIFE SAFETY CODE SUMMARY:

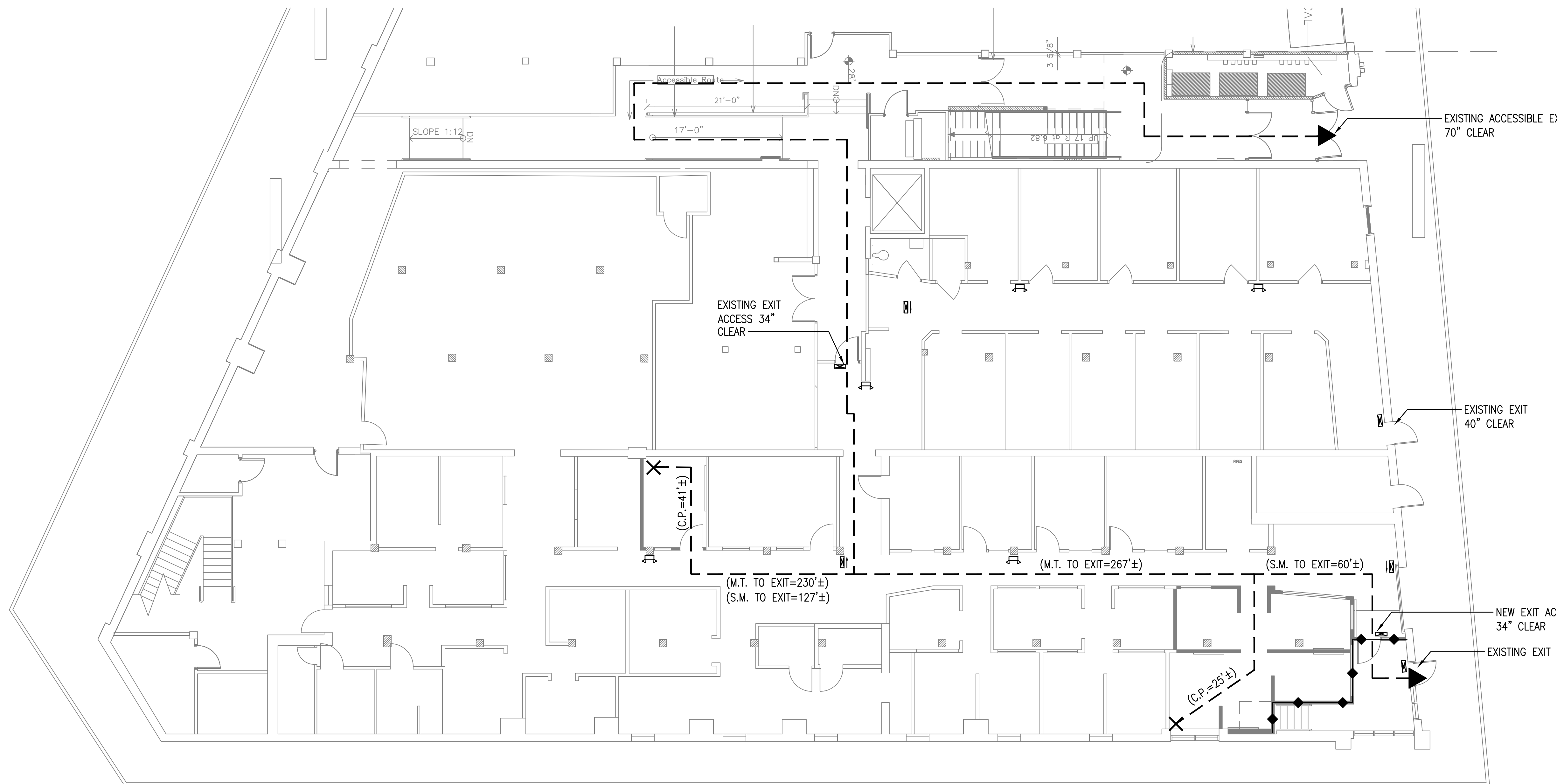
TABLE 7.3.1.2 OCCUPANT LOAD FACTORS:
 • OFFICES: 100 SQ FT PER PERSON

TABLE A.7.6 BUSINESS (SPRINKLER PROTECTED)

EGRESS TRAVEL CRITERIA	MAXIMUM ALLOWABLE	ACTUAL
COMMON PATH (FT)	100'	25'
DEAD END (FT)	50'	0'
TRAVEL DISTANCE (FT)	300'	267'

TOTAL SQUARE FOOT = 8,719 SF
 TOTAL OCCUPANTS = 88 PERSONS * 0.2 = 18" MIN. EGRESS WIDTH
 PROVIDED = 34" (NEW)

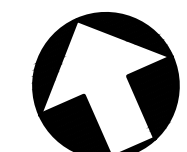
12.2.3.8 MINIMUM CORRIDOR WIDTH
 THE WIDTH OF ANY EXIT ACCESS CORRIDOR SERVING 50 OR MORE PERSONS SHALL BE NOT LESS THAN 44"



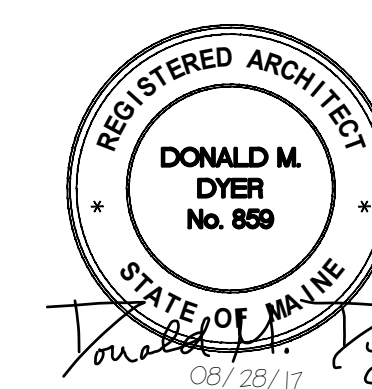
FIRST FLOOR LIFE SAFETY PLAN
 SCALE: 1/8" = 1'-0"

X:\262 Colby Company\262.002.001 - Office Renovation\2017 Drawings\Sheets\LS-101.dwg - 8/28/2017 11:31 AM - ZACH JONES

PROJECT



Scale: 1/8" = 1'-0"



PLEASE NOTE: THIS DOCUMENT MAY NOT ACCURATELY REPRESENT THE FINAL DOCUMENT. ONLY AN ENGINEER, ARCHITECT OR SURVEYOR SIGNED, SEALED AND DATED PAPER COPY, PROVIDED BY THIS OFFICE, MAY BE UTILIZED FOR BIDDING OR CONSTRUCTION PURPOSES.

0 ISSUED FOR BIDDING MAB CBC 08/28/17 DWN APP DATE				COLBY CO. ENGINEERING 47A YORK STREET, PORTLAND MAINE	
				NEW CUBICLE FIT-OUT/ OFFICE EXPANSION	
FIRST FLOOR LIFE SAFETY PLAN				PROJECT NO. 262.002.001	
REV DESCRIPTION				DRAWING NO. LS-101	
SIZE: ANSI D DATE: AUG 2017 DES BY: MAB DWN BY: MAB CKD BY: BLB		PROJECT NO. 262.002.001 SHEET 2 OF 19			