

DEMOLITION LEGEND:

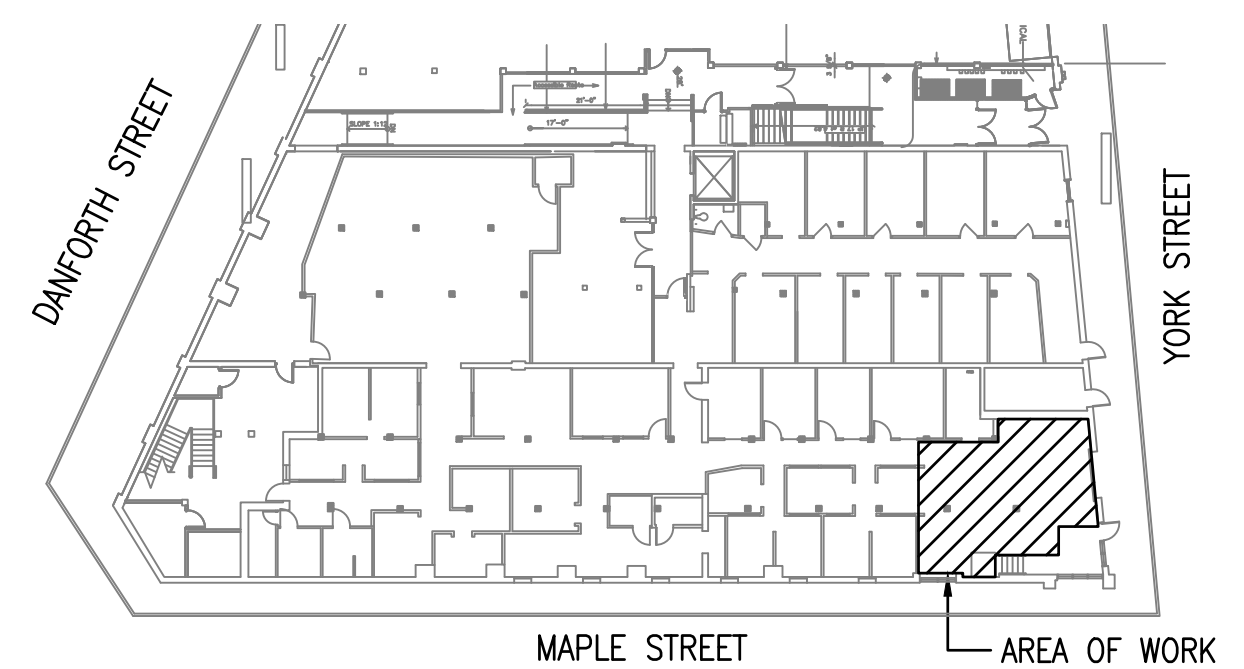
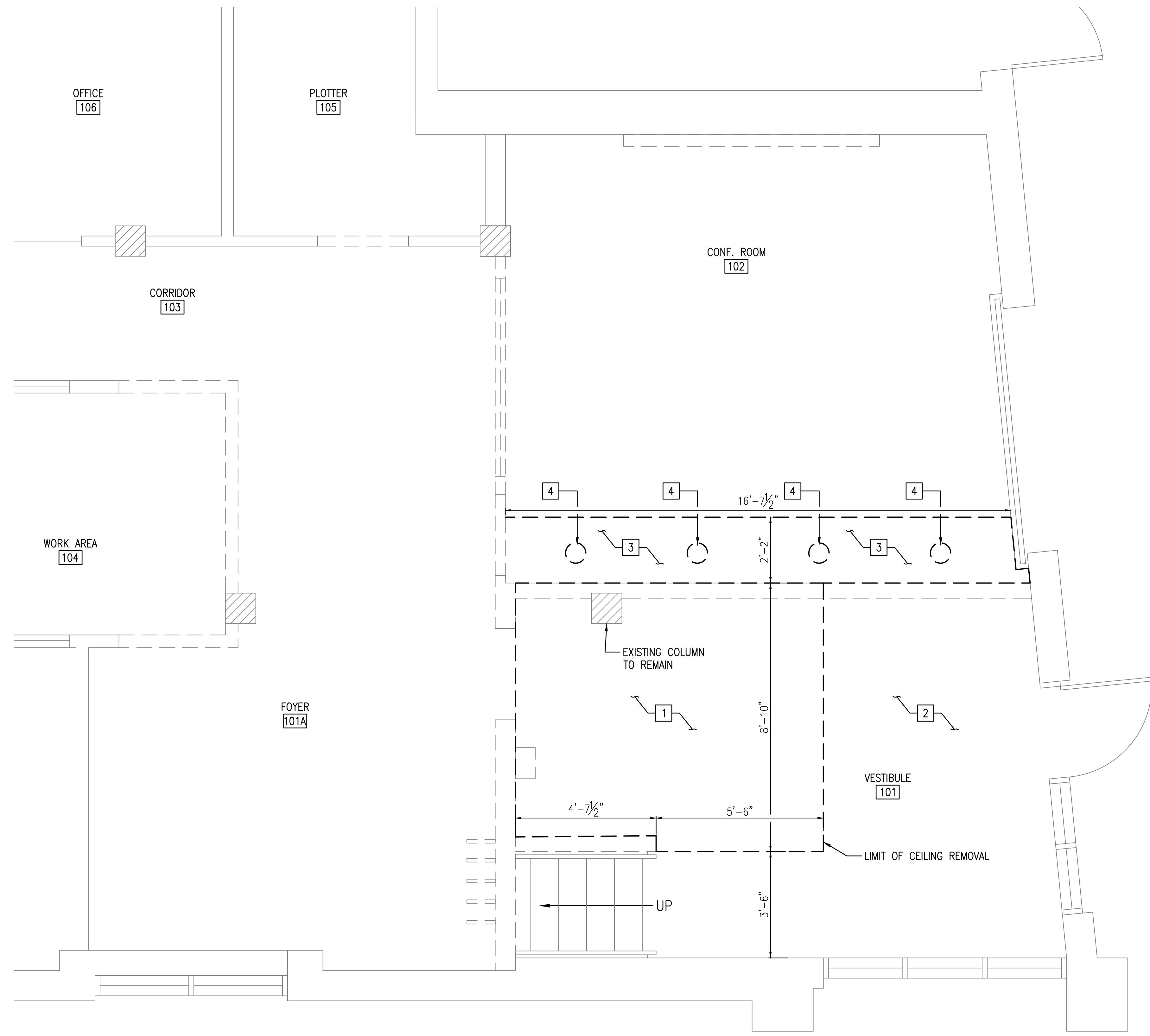
- EXISTING TO REMAIN
- - - - - ITEMS TO BE REMOVED

NOTES:

1. SEE DRAWING A-001 FOR GENERAL NOTES, LEGEND, AND ABBREVIATIONS.
2. COORDINATE REMOVALS WITH MECHANICAL, ELECTRICAL, AND FIRE PROTECTION DRAWINGS.
3. CONTRACTOR TO COORDINATE ITEMS TO BE SALVAGED WITH OWNER.
4. ALL THROUGH-WALL/FLOOR PENETRATIONS TO BE REMOVED SHALL BE INFILLED WITH LIKE MATERIALS AND RATINGS TO MATCH EXISTING CONDITIONS.
5. CONTRACTOR TO SECURE CONSTRUCTION AREA AT ALL TIMES.

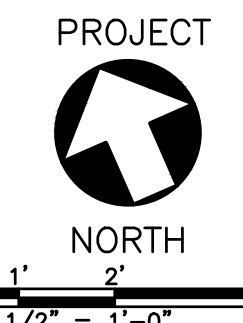
DEMOLITION KEYED NOTES:

- 1 REMOVE EXISTING SUSPENDED ACOUSTIC CEILING, GRID AND TILE SYSTEM, COMPLETE. COORDINATE REMOVALS ABOVE CEILING WITH MECHANICAL, ELECTRICAL AND FIRE PROTECTION DRAWINGS.
- 2 EXISTING SUSPENDED ACOUSTIC CEILING TO REMAIN.
- 3 REMOVE EXISTING GYPSUM BOARD SOFFIT, COMPLETE.
- 4 REMOVE EXISTING RECESSED DOWNLIGHT. SEE ELECTRICAL & FIRE PROTECTION DRAWINGS.

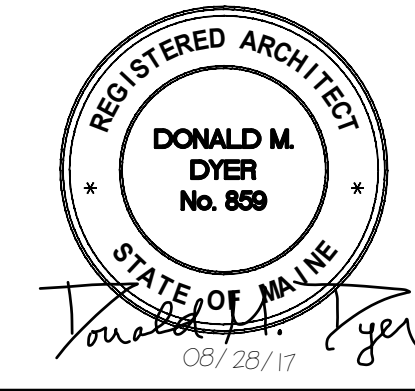


LOCATION PLAN
SCALE: NTS

FIRST FLOOR DEMOLITION REFLECTED CEILING PLAN
SCALE: 1/2" = 1'-0"



Scale: 1/2" = 1'-0"



PLEASE NOTE: THIS DOCUMENT MAY NOT ACCURATELY REPRESENT THE FINAL DOCUMENT. ONLY AN ENGINEER, ARCHITECT OR SURVEYOR SIGNED, SEALED AND DATED PAPER COPY, PROVIDED BY THIS OFFICE, MAY BE UTILIZED FOR BIDDING OR CONSTRUCTION PURPOSES.

				COLBY CO. ENGINEERING 47A YORK STREET, PORTLAND MAINE			
				NEW CUBICLE FIT-OUT/ OFFICE EXPANSION			
0 ISSUED FOR BIDDING				MAB	CBC	08/28/17	FIRST FLOOR DEMOLITION REFLECTED CEILING PLAN - FRONT OFFICE
REV	DESCRIPTION	DATE	DWN	APP	DATE		
SIZE: ANSI D		PROJECT NO.	DRAWING NO.				AD-103
DATE: AUG 2017		262.002.001					
DES BY: MAB		SHEET					
DWN BY: MAB		6 OF 19					
CKD BY: BLB							

X:\262 Colby Company\262.002.001 - Office Renovation\2017 Drawings\Sheets\AD-103.dwg - 8/28/2017 11:31 AM - ZACH JONES