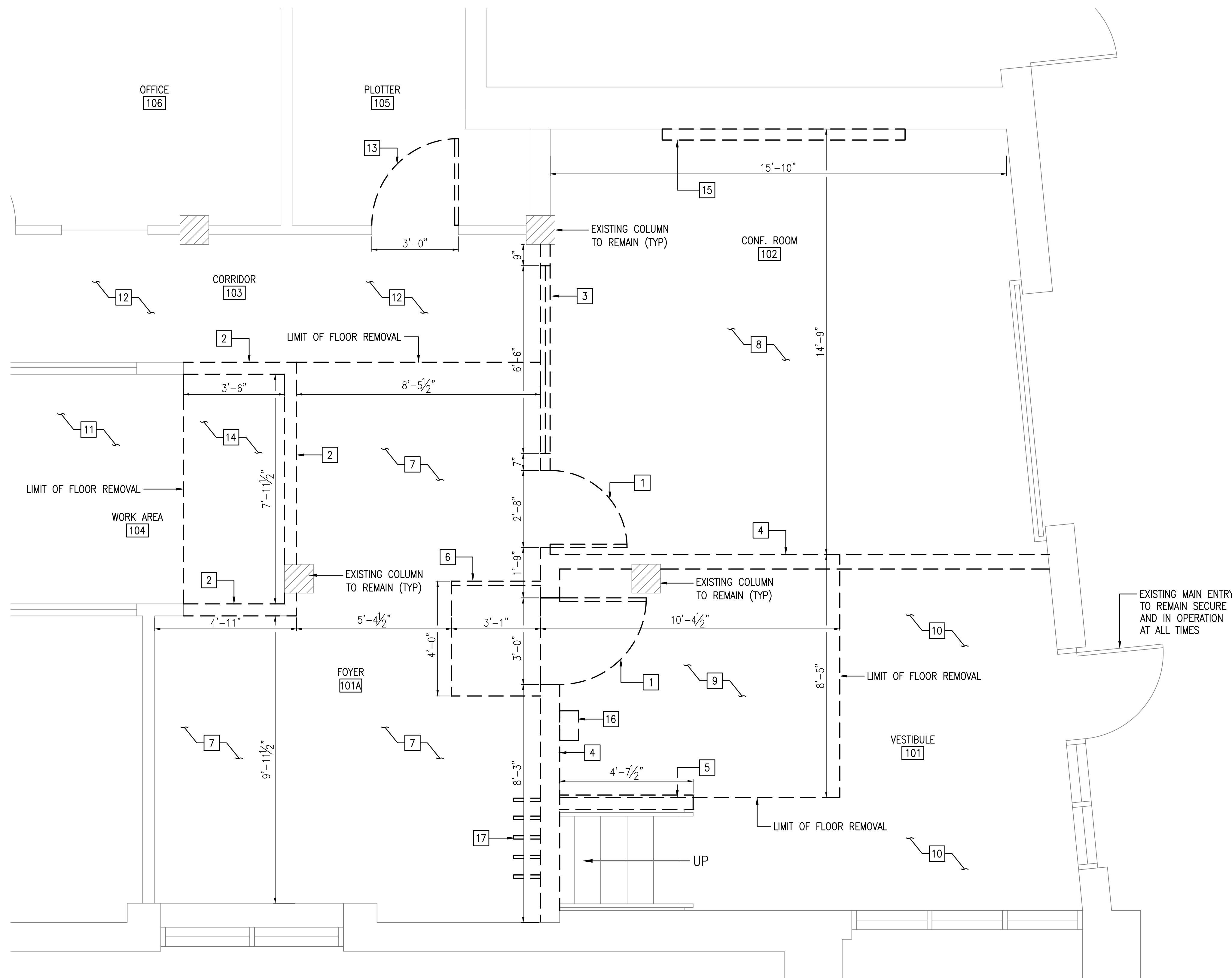


X:\262 Colby Company\262.002.001 - Office Renovation\2017 Drawings\Sheets\AD-101.dwg - 8/28/2017 11:31 AM - ZACH JONES



**FIRST FLOOR DEMOLITION PART PLAN - FRONT OFFICE**  
SCALE: 1/2" = 1'-0"

**DEMOLITION LEGEND:**

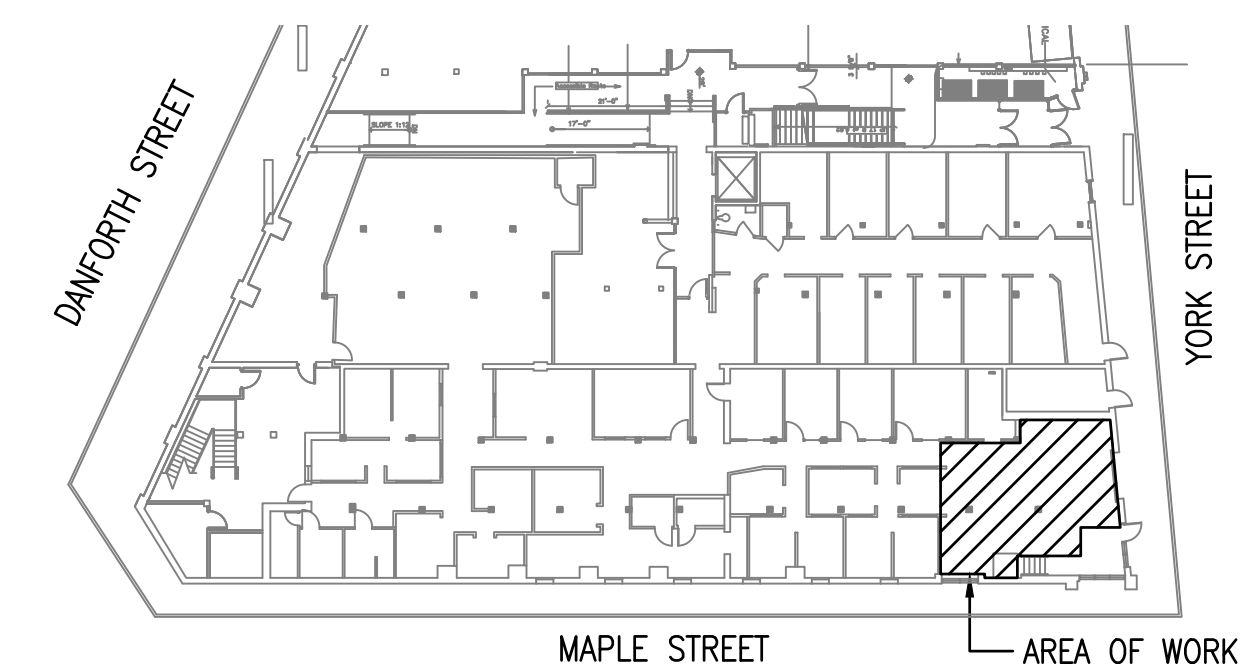
- EXISTING TO REMAIN
- - - - - ITEMS TO BE REMOVED

**NOTES:**

1. SEE DRAWING A-001 FOR GENERAL NOTES, LEGEND, AND ABBREVIATIONS.
2. COORDINATE REMOVALS WITH MECHANICAL, ELECTRICAL, AND FIRE PROTECTION DRAWINGS.
3. CONTRACTOR TO COORDINATE ITEMS TO BE SALVAGED WITH OWNER.
4. ALL THROUGH-WALL/FLOOR PENETRATIONS TO BE REMOVED SHALL BE FILLED WITH LIKE MATERIALS AND RATINGS TO MATCH EXISTING CONDITIONS.
5. CONTRACTOR TO SECURE CONSTRUCTION AREA AT ALL TIMES.

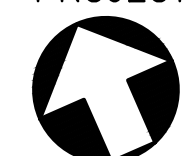
**DEMOLITION KEYED NOTES:**

- 1 REMOVE EXISTING INTERIOR WOOD DOOR, FRAME, AND ASSOCIATED HARDWARE, COMPLETE. SEE SHEET ED-101.
- 2 REMOVE EXISTING 6'-0" HIGH WOOD STUD PARTITION WITH GYPSUM BOARD AND WOOD CAP TRIM, COMPLETE.
- 3 REMOVE EXISTING FULL HEIGHT WOOD STUD PARTITION WITH GYPSUM BOARD AND GLAZING, COMPLETE. SEE SHEET MD-101 FOR ADDITIONAL REMOVALS.
- 4 REMOVE EXISTING FULL HEIGHT WOOD STUD PARTITION WITH GYPSUM BOARD, COMPLETE. SEE SHEET ED-101.
- 5 REMOVE EXISTING GYPSUM BOARD PARTITION, COMPLETE. TEMPORARILY REMOVE STAIR HANDRAIL AND SAVE FOR RE-INSTALLATION.
- 6 REMOVE EXISTING WOOD LANDING, HANDRAIL AND CARPET, COMPLETE.
- 7 REMOVE EXISTING PLASTIC LAMINATE WOOD FLOORING, COMPLETE.
- 8 REMOVE EXISTING CARPET TILE AND SAVE FOR REUSE.
- 9 REMOVE EXISTING RAISED WOOD PLATFORM AND TILE, COMPLETE. SAW CUT TILE TO PREVENT CRACKING OF TILE. DAMAGED TILE MUST BE REPLACED IN KIND. LEVEL EXISTING CONCRETE FLOOR BY GRINDING DOWN TO REMOVE ANY HIGH SPOTS AND CREATE A UNIFORM LEVEL FINISH IN PREPARATION FOR CARPET TILES. USE A PRODUCT SIMILAR TO SAKRETE AND POUR A LEVELING COMPOUND TO CREATE A BROOM LEVEL FLOOR FINISH READY FOR CARPET TILES.
- 10 EXISTING TILE TO REMAIN.
- 11 EXISTING CARPET TO REMAIN.
- 12 EXISTING PLASTIC LAMINATE WOOD FLOORING TO REMAIN.
- 13 REMOVE EXISTING INTERIOR WOOD DOOR, FRAME, AND ASSOCIATED HARDWARE, SAVE FOR RE-INSTALLATION.
- 14 REMOVE EXISTING CARPET.
- 15 REMOVE AND SALVAGE EXISTING STEEL AND GLASS WHITE BOARD. RETURN TO OWNER.
- 16 REMOVE AND SALVAGE EXISTING MAILBOX FOR REINSTALLATION.
- 17 REMOVE AND SALVAGE EXISTING WALL MOUNTED COAT HOOKS FOR REINSTALLATION.

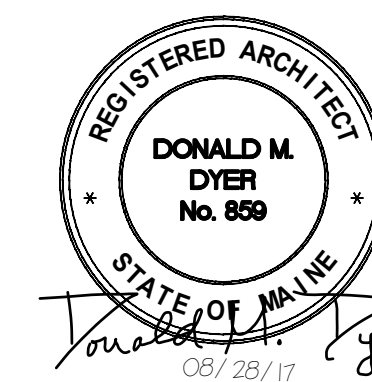


**LOCATION PLAN**  
SCALE: NTS

PROJECT



Scale: 1/2" = 1'-0"



PLEASE NOTE: THIS DOCUMENT MAY NOT ACCURATELY REPRESENT THE FINAL DOCUMENT. ONLY AN ENGINEER, ARCHITECT OR SURVEYOR SIGNED, SEALED AND DATED PAPER COPY, PROVIDED BY THIS OFFICE, MAY BE UTILIZED FOR BIDDING OR CONSTRUCTION PURPOSES.

				<b>COLBY CO. ENGINEERING</b> 47A YORK STREET, PORTLAND MAINE	
				NEW CUBICLE FIT-OUT/ OFFICE EXPANSION	
				FIRST FLOOR DEMOLITION PART PLAN - FRONT OFFICE	
0	ISSUED FOR BIDDING	MAB	CBC	08/28/17	PROJECT NO. 262.002.001
REV	DESCRIPTION	DWN	APP	DATE	DRAWING NO. 4 OF 19
SIZE: ANSI D		DATE: AUG 2017		PROJECT NO. 262.002.001	
47A York Street Portland, Maine 04101 207.553.7753 colbycoengineering.com		DES BY: MAB		SHEET 4 OF 19	
Colby Company engineering		DWN BY: MAB		<b>AD-101</b>	
		CKD BY: BLB			