


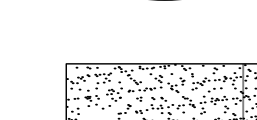


LEGEND:

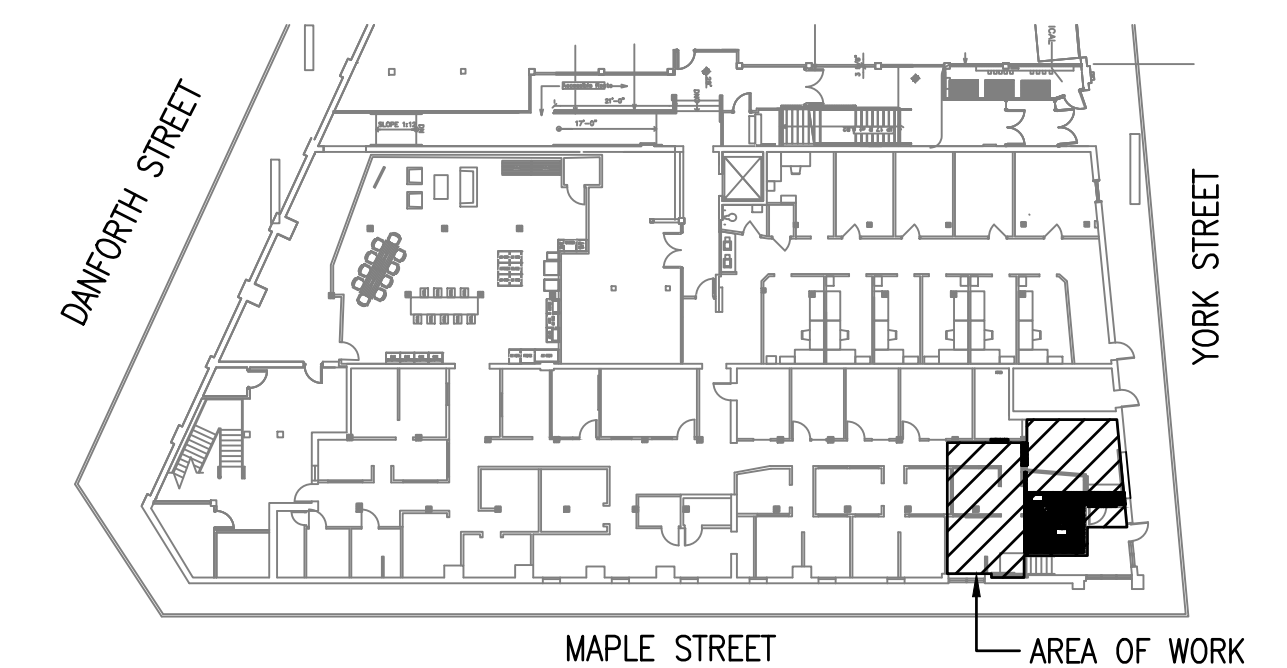
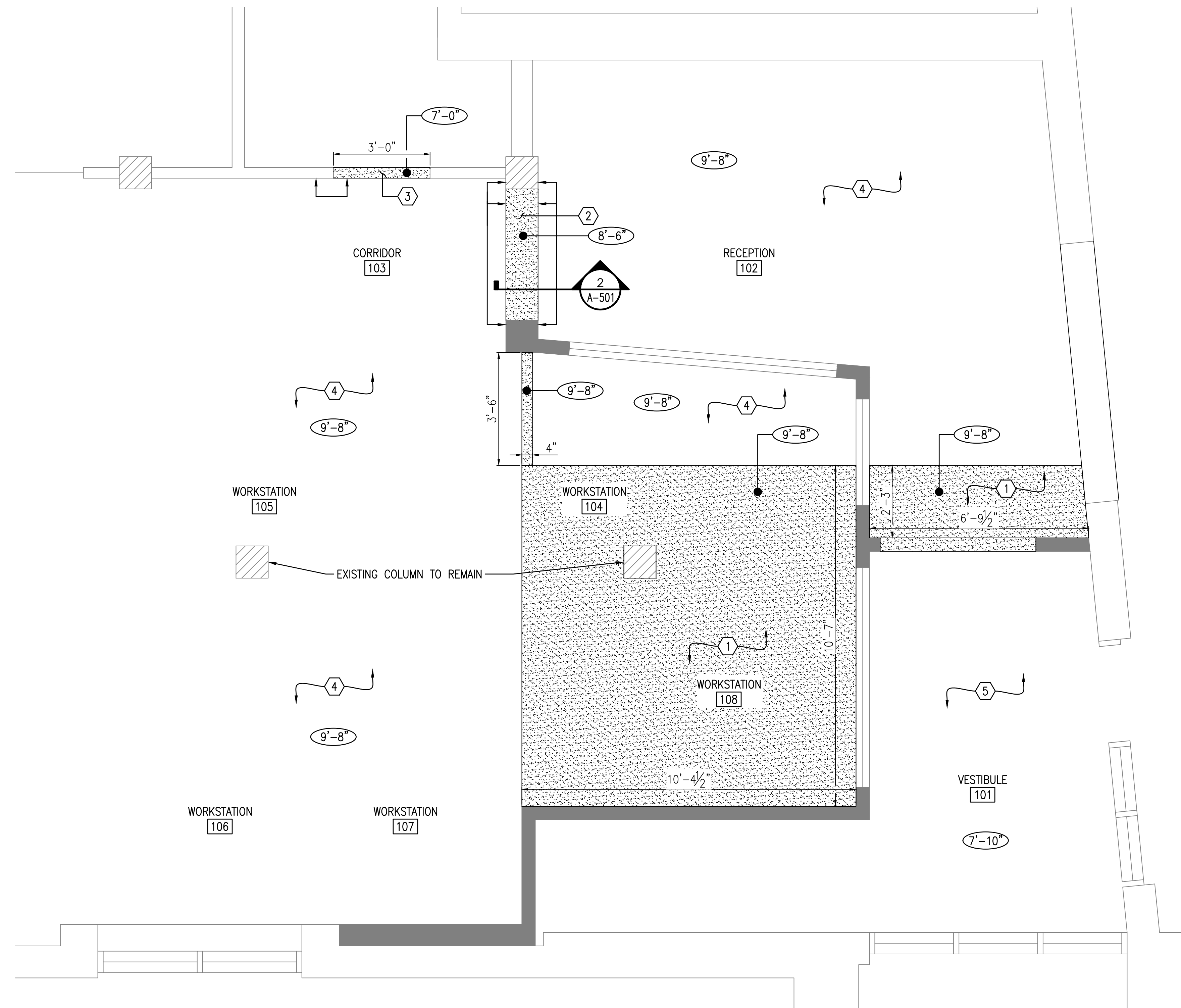
-  NEW WALLS
-  EXISTING WALLS TO REMAIN
-  FINISHED CEILING AFF
-  GWB CEILING

NOTES:

1. SEE DRAWING A-001 FOR GENERAL NOTES, LEGEND, AND ABBREVIATIONS.
2. COORDINATE WITH ELECTRICAL, MECHANICAL AND FIRE PROTECTION DRAWINGS.
3. CONTRACTOR WILL PATCH CEILINGS AND WALLS AT ANY AREAS DISTURBED DURING CONSTRUCTION. MATCH AND ALIGN WITH ADJACENT SURFACES.
4. CONTRACTOR WILL PROVIDE AND INSTALL ALL BLOCKING REQUIRED FOR INSTALLATION WORK.
5. SEE A-501 FOR WALL AND CEILING TYPES.
6. SEE A-601 FOR DOOR SCHEDULE.
7. CONTRACTOR TO SECURE BUILDING AT ALL TIMES.

KEYED NOTES:

- ① PROVIDE AND INSTALL NEW GYPSUM CEILING BOARD TO MATCH EXISTING. SEE DETAIL 1/A-501
- ② PROVIDE AND INSTALL GYPSUM BOARD SOFFIT. COORDINATE WITH MECHANICAL DUCT INSTALLATION. SEE MECHANICAL DRAWINGS.
- ③ PROVIDE AND INSTALL GYPSUM BOARD FINISHED OPENING WITH CORNER BEADS TO MATCH EXISTING WALL FINISH.
- ④ EXISTING GYPSUM BOARD CEILING TO REMAIN.
- ⑤ EXISTING SUSPENDED ACOUSTIC CEILING TO REMAIN.



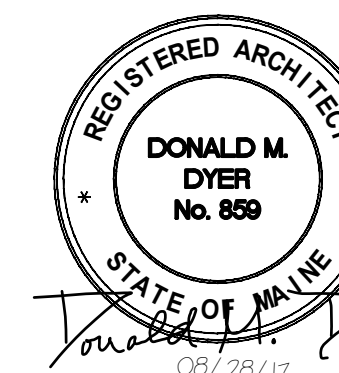
LOCATION PLAN
SCALE: NTS

FIRST FLOOR REFLECTED CEILING PLAN - FRONT OFFICE
SCALE: 1/2" = 1'-0"

PROJECT



Scale: 1/2" = 1'-0"



PLEASE NOTE: THIS DOCUMENT MAY NOT ACCURATELY REPRESENT THE FINAL DOCUMENT. ONLY AN ENGINEER, ARCHITECT OR SURVEYOR SIGNED, SEALED AND DATED PAPER COPY, PROVIDED BY THIS OFFICE, MAY BE UTILIZED FOR BIDDING OR CONSTRUCTION PURPOSES.

| | | | | | |
|--------------|--------------------|----------------|-----|---|-----------------------------|
| | | | | COLBY CO. ENGINEERING 47A YORK STREET, PORTLAND MAINE | |
| | | | | NEW CUBICLE FIT-OUT/ OFFICE EXPANSION | |
| | | | | FIRST FLOOR REFLECTED CEILING PLAN - FRONT OFFICE | |
| 0 | ISSUED FOR BIDDING | MAB | CBC | 08/28/17 | PROJECT NO. 262.002.001 |
| REV | DESCRIPTION | DWN | APP | DATE | DRAWING NO. A-103 |
| SIZE: ANSI D | | DATE: AUG 2017 | | PROJECT NO. 262.002.001 | |
| DES BY: MAB | | DWN BY: MAB | | SHEET 9 OF 19 | |
| DWN BY: MAB | | CKD BY: BLB | | | |



47A York Street
Portland, Maine 04101
207.553.7753
colbycoengineering.com