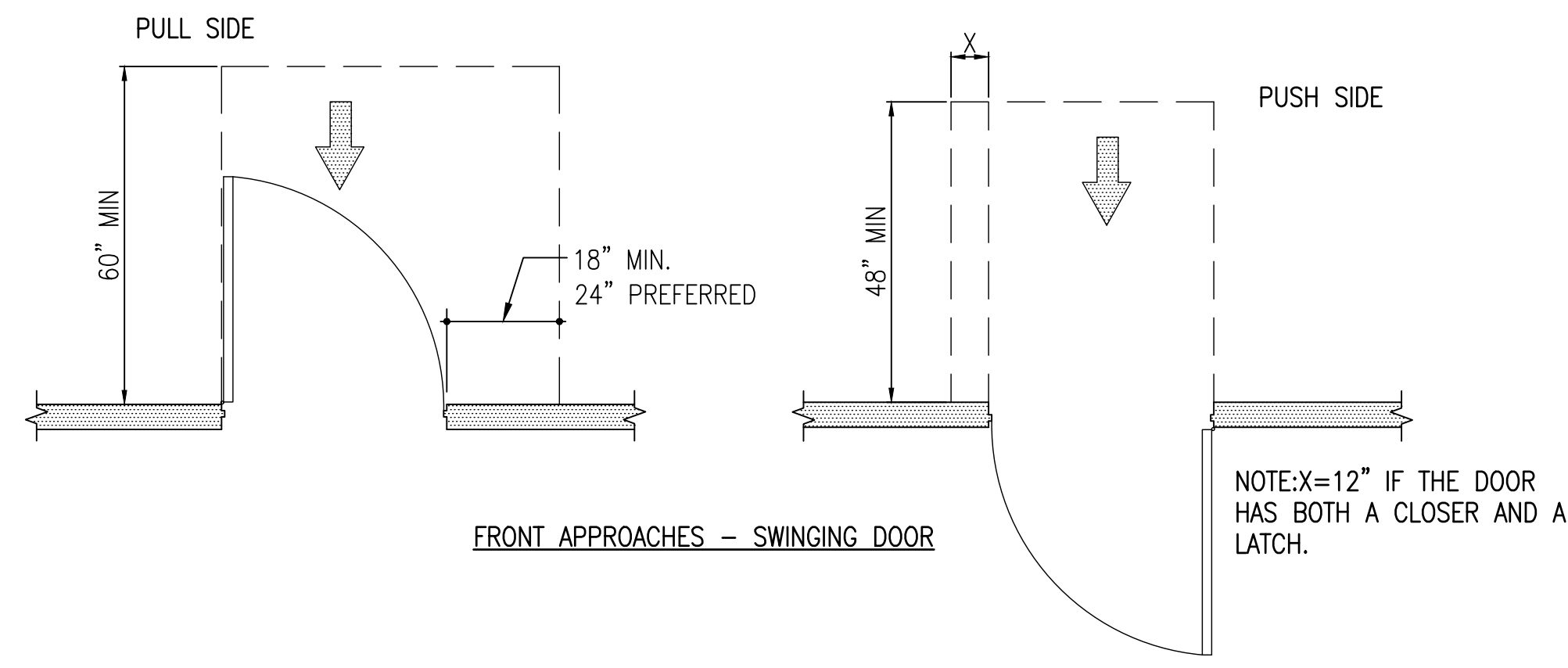
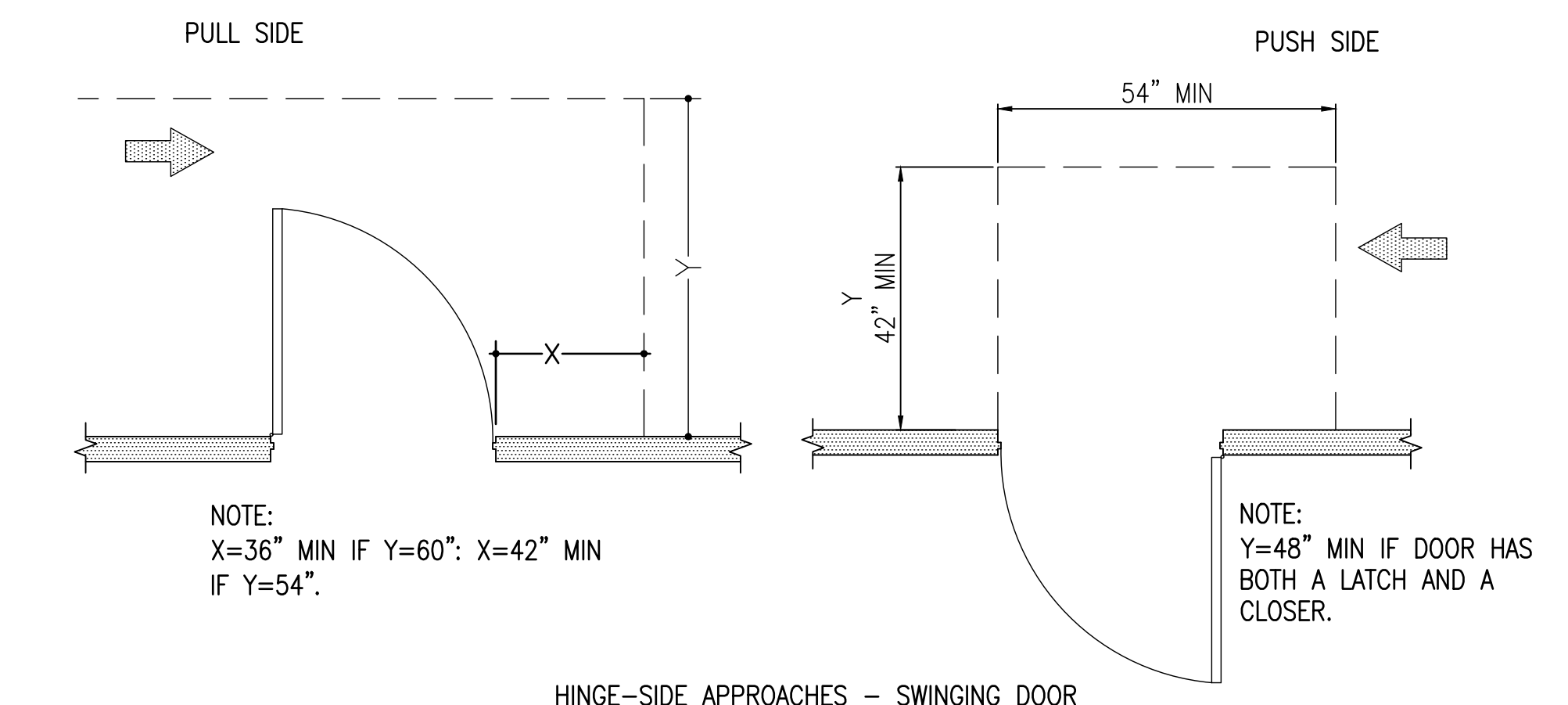


1 CLEAR DOORWAY AND DEPTH

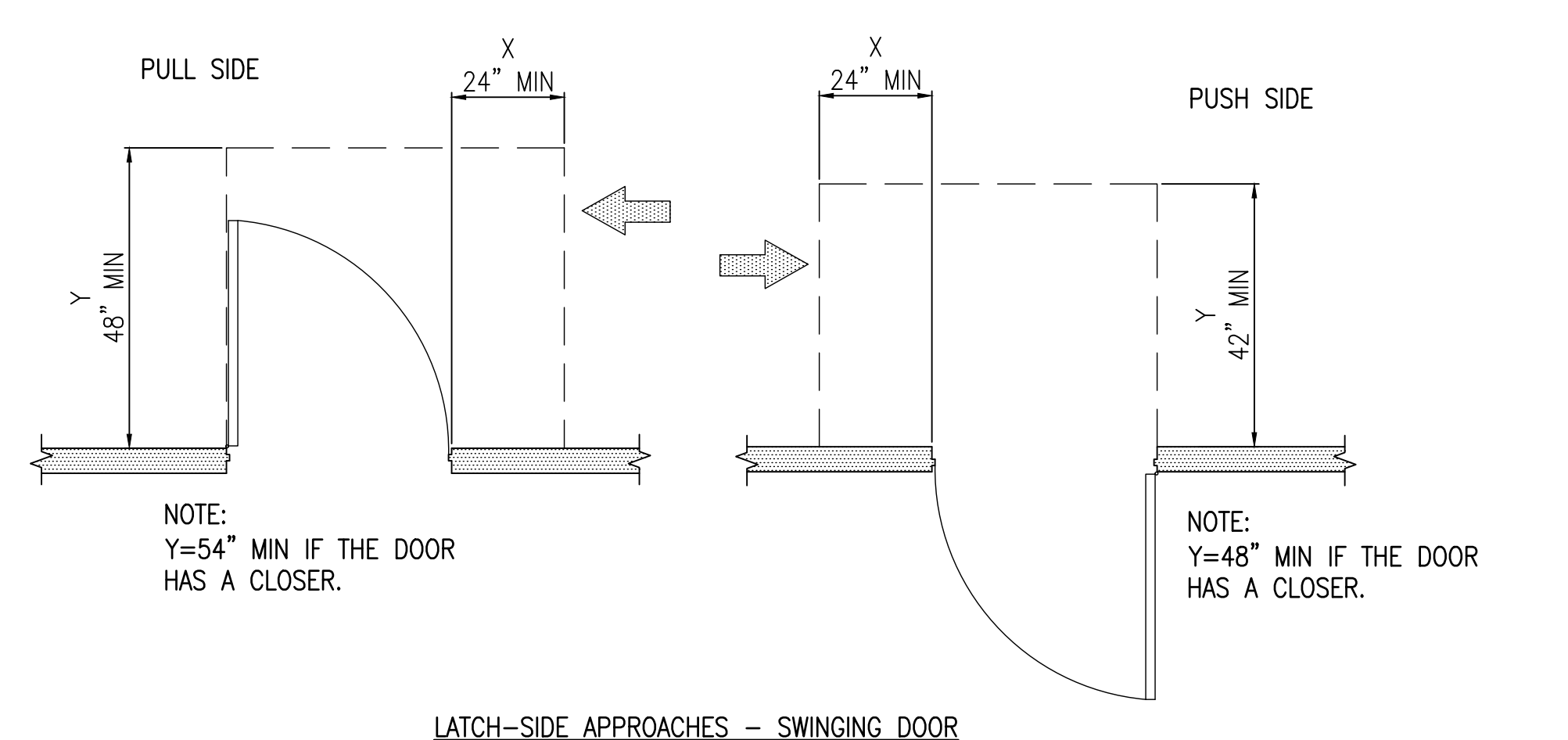
A-001 SCALE: NTS



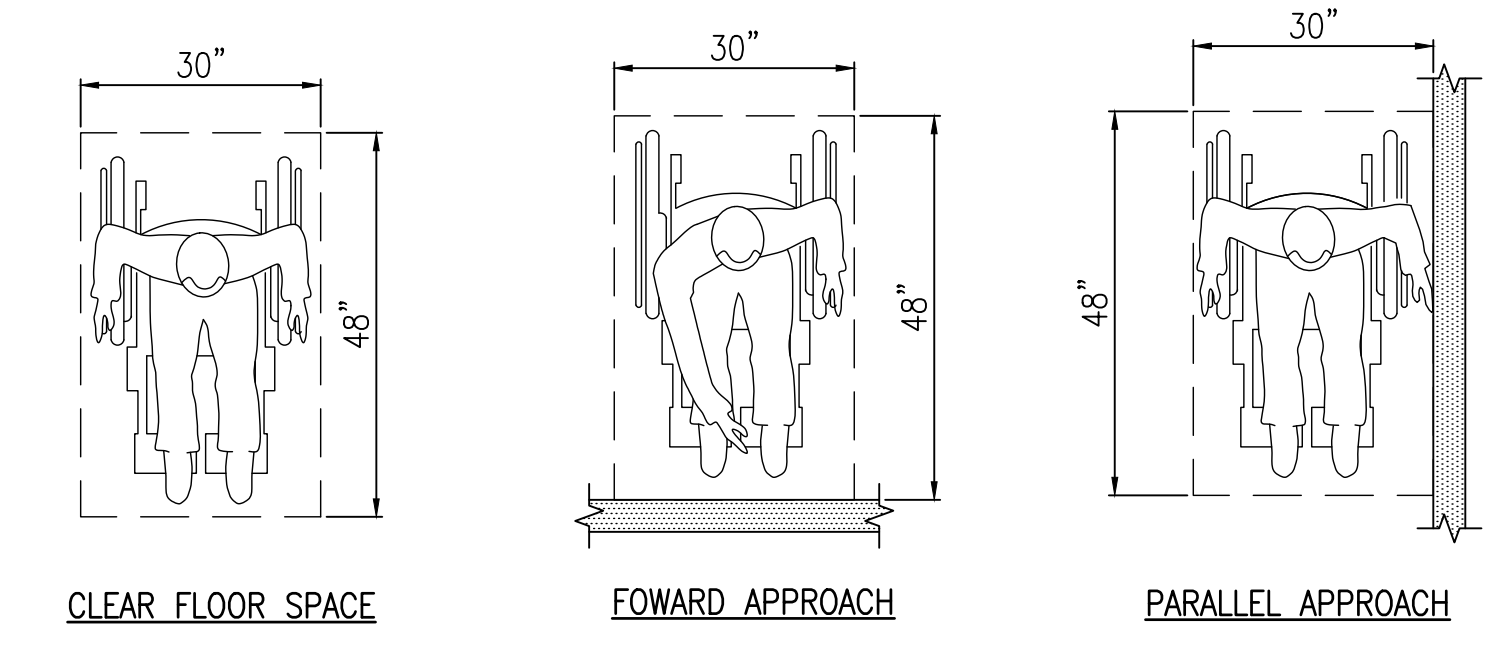
FRONT APPROACHES - SWINGING DOOR



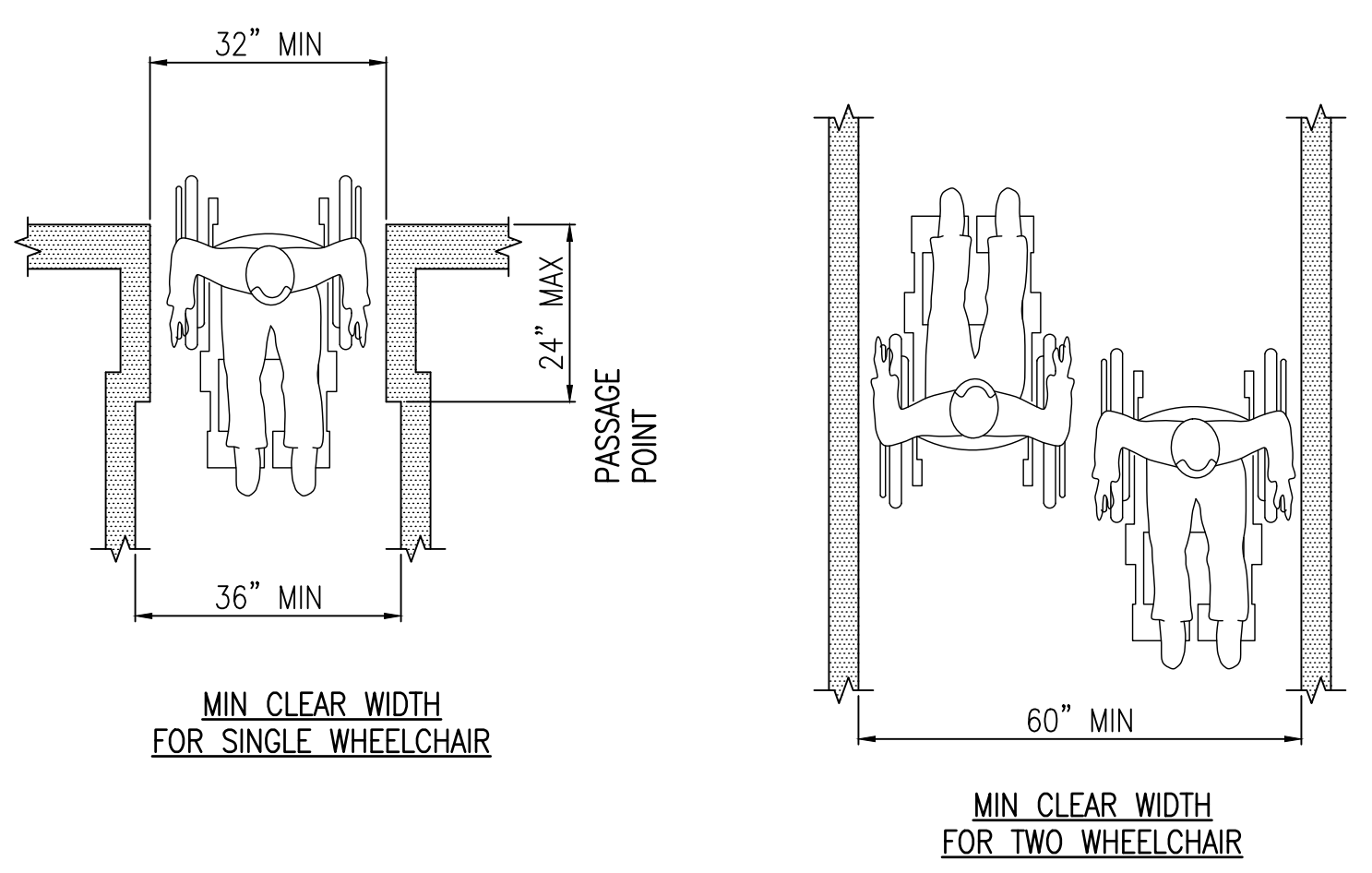
HINGE-SIDE APPROACHES - SWINGING DOOR



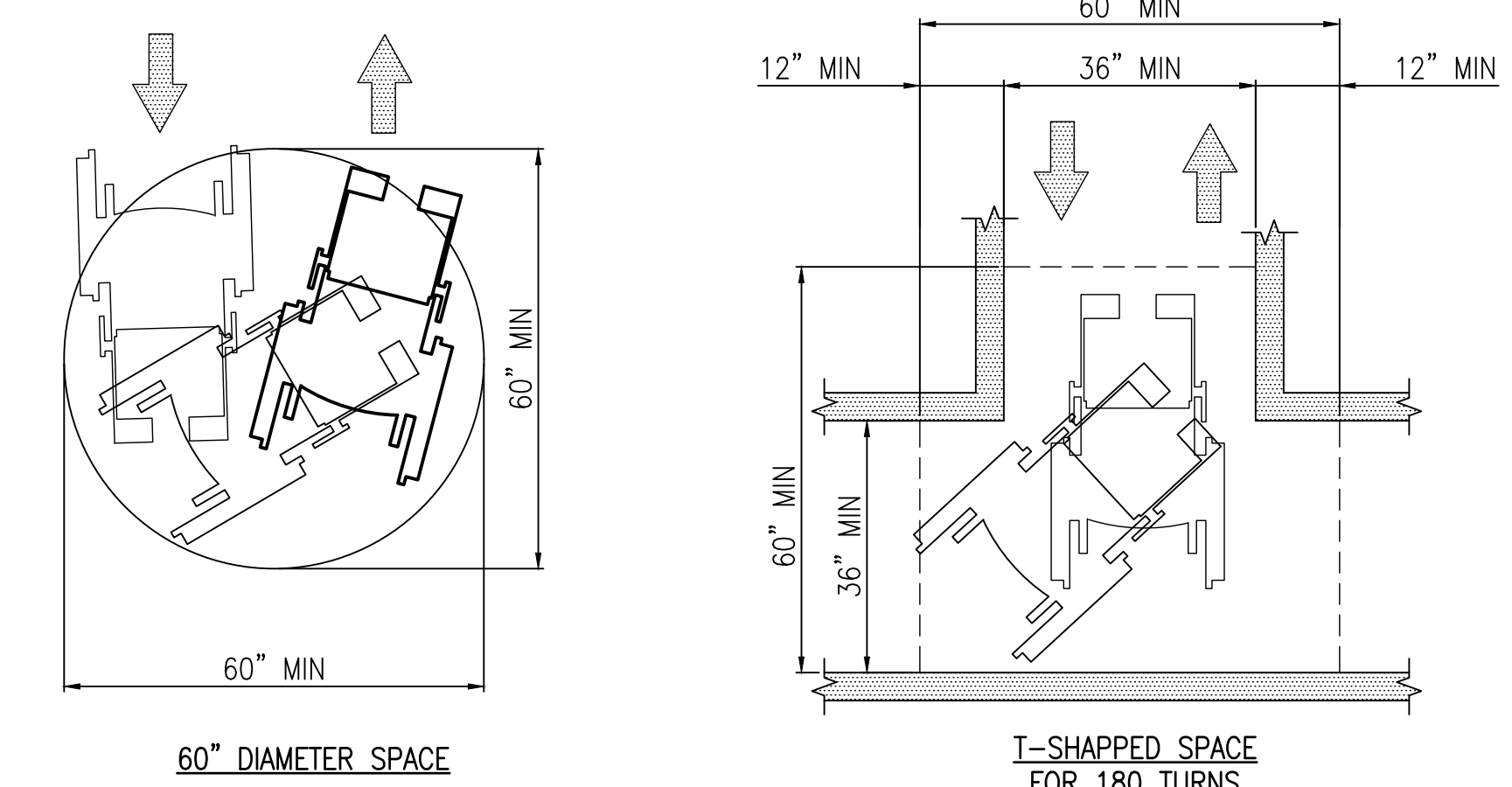
LATCH-SIDE APPROACHES - SWINGING DOOR



CLEAR FLOOR SPACE FORWARD APPROACH PARALLEL APPROACH

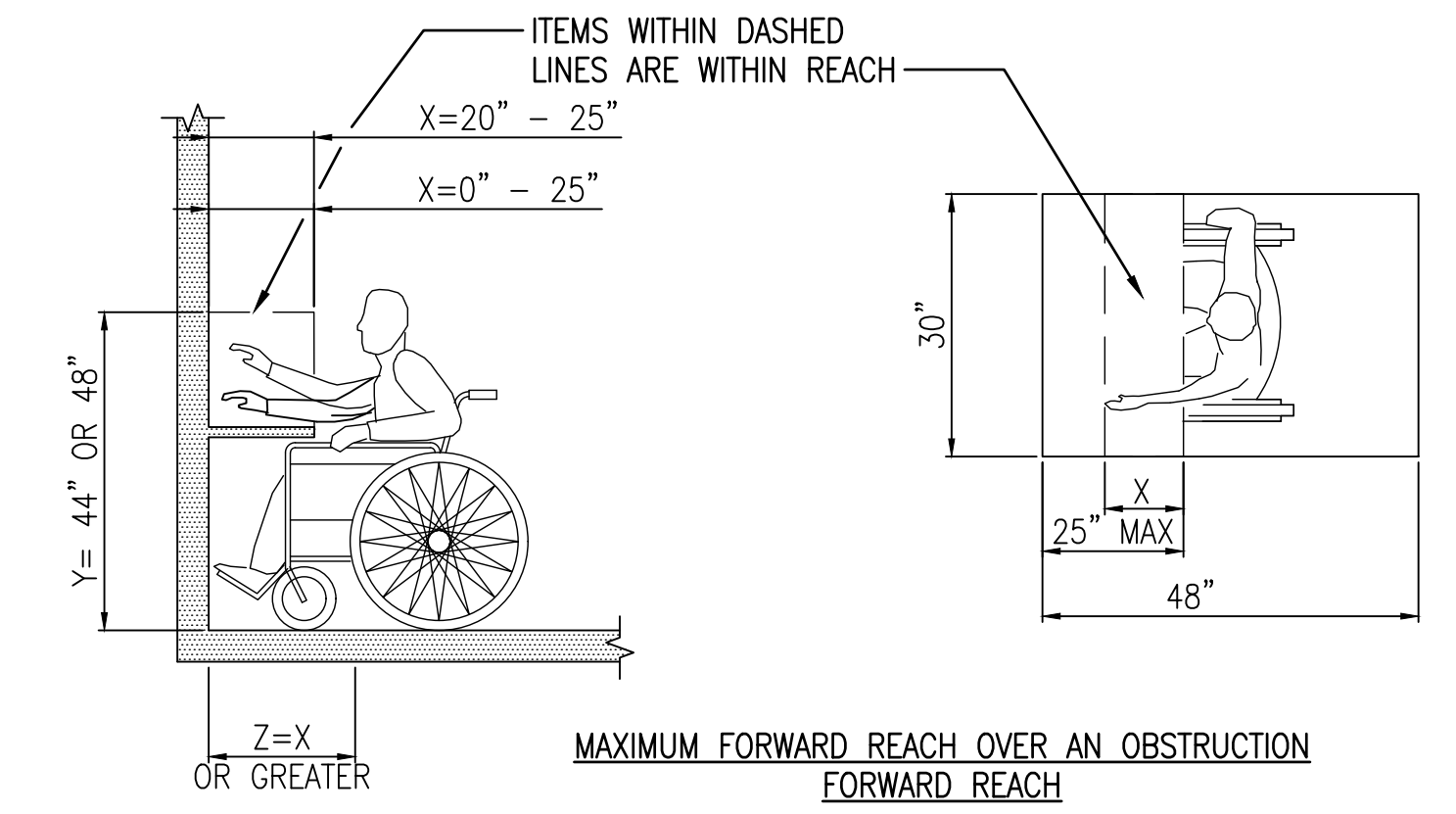


CLEAR FLOOR SPACE IN ALCOVES



60" DIAMETER SPACE

WHEELCHAIR TURNING SPACE



MAXIMUM FORWARD REACH OVER AN OBSTRUCTION FORWARD REACH

GRAPHIC LEGEND

- DETAIL PLAN
- WALL SECTION/DETAIL
- INTERIOR ELEVATION
- WALL TYPE. SEE A-501.
- DOOR TYPE. SEE A-601.
- DEMO KEYED NOTES
- KEYED NOTES

MATERIAL LEGEND

- RECLAIMED WOOD VENEER
- CONCRETE
- GYPSUM BOARD
- SOUND ATTENUATION BLANKET
- PLYWOOD
- CARPET

TYPICAL ABBREVIATIONS

- ACT ACOUSTICAL CEILING TILE
- CLG CEILING
- COL COLUMN
- CONC CONCRETE
- CONT CONTINUOUS
- CT CERAMIC TILE
- DEMO DEMOLITION
- DWG DRAWING
- EA EACH
- EL ELEVATION
- EQ EQUAL
- EXIST EXISTING
- FD FLOOR DRAIN
- FE FIRE EXTINGUISHER
- FLR FLOOR
- A.A. GENERAL CONTRACTOR
- GYP BD GYPSUM BOARD
- HGT HEIGHT
- HM HOLLOW METAL
- INSUL INSULATION
- MFR MANUFACTURER
- MG MIRROR, GLASS
- MIR MIRROR
- MISC MISCELLANEOUS
- MTL METAL
- NIC NOT IN CONTRACT
- OPP OPPOSITE
- PEX PAINTED EXPOSED SURFACE
- PLWD PLYWOOD
- PTD PAINTED
- RB RUBBER BASE
- RMT RUBBER MOLDED TILE
- SC SHOWER CURTAIN
- SCR SHOWER CURTAIN RODS
- SIM SIMILAR
- STL STEEL
- T.O. TOP OF
- TTD TOILET TISSUE DISPENSER
- TYP TYPICAL
- UNO UNLESS NOTED OTHERWISE
- V.I.F. VERIFY IN FIELD
- WD WOOD

GENERAL NOTES:

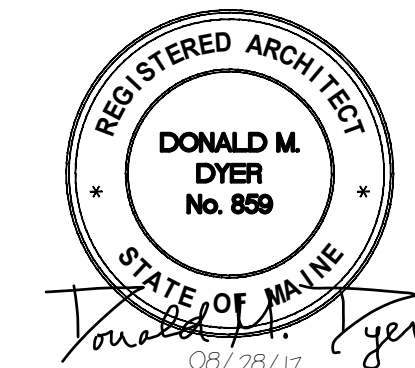
1. FIELD VERIFY ALL DIMENSIONS AND CONDITIONS. PROMPTLY NOTIFY THE ARCHITECT OF ANY INCONSISTENCIES OR OTHER PROBLEMS IN WRITING IMMEDIATELY UPON DISCOVERY, AND BEFORE PROCEEDING WITH THE WORK.
2. ALL INDICATIONS AND NOTATIONS ON THE DRAWINGS APPLYING TO ONE AREA, COMPONENT OR CONDITION, SHALL APPLY TO ALL OTHER SIMILAR AREAS, COMPONENTS AND CONDITIONS, UNLESS CLEARLY INDICATED OTHERWISE.
3. CONTRACTOR SHALL TAKE ALL PRECAUTIONS TO PRESERVE AND MAINTAIN ALL EXISTING CONDITIONS TO ANY SURFACES WHICH WILL REMAIN EXPOSED IN THE FINISHED WORK. SURFACES DAMAGED BY DEMOLITION WORK SHALL BE PATCHED AS REQUIRED TO MATCH THE ADJACENT SURFACE.
4. DIMENSIONS ARE TAKEN FROM FACE OF FINISHED CONSTRUCTION. CLEAR DIMENSIONS ARE TO FINISHED FACE OF CONSTRUCTION AND SHALL TAKE PRECEDENCE OVER ANY OTHER DIMENSION.
5. ALL EXPOSED PIPES AND CONDUITS SHALL BE PAINTED UNLESS OTHERWISE NOTED. PAINTING SHALL MATCH EXISTING OFFICE.
6. SEE ROOM FINISH SCHEDULE FOR FINISHES.
7. CONTRACTOR SHALL EXAMINE ELECTRIC, MECHANICAL, AND PLUMBING WORK TO BE CONCEALED WITHIN WALL AND CEILING TO DETERMINE SCOPE OF PATCH AND REPAIR WORK REQUIRED TO COMPLETE THE WORK OF THIS CONTRACT.
8. TWO FINISHED COATS OF PAINT SHALL BE APPLIED ON ALL SURFACES SUCH AS INTERIOR WALLS, CEILINGS, AND DOOR FRAMES.
9. ALL PENETRATIONS TO BE SEALED. FLOOR AND WALL SEALANTS TO BE ONE HOUR RATED.
10. CONTRACTOR TO PROVIDE ALL BLOCKING AS REQUIRED FOR INSTALLATION OF CASEWORK, EQUIPMENT, AND ALL IMPROVEMENTS. ALL BLOCKING IT TO BE FIRE RATED.
11. CONTRACTOR IS TO PROVIDE PATCH AND PAINT TO ALL AREAS DISTURBED DURING CONSTRUCTION. MATERIALS ARE TO MATCH ADJACENT IN QUALITY AND FINISH.

2 DOORWAY APPROACH CLEARANCES

A-001 SCALE: NTS

3 WHEELCHAIR ACCESSIBLE REQUIREMENTS

A-001 SCALE: NTS



PLEASE NOTE: THIS DOCUMENT MAY NOT ACCURATELY REPRESENT THE FINAL DOCUMENT. ONLY AN ENGINEER, ARCHITECT OR SURVEYOR SIGNED, SEALED AND DATED PAPER COPY, PROVIDED BY THIS OFFICE, MAY BE UTILIZED FOR BIDDING OR CONSTRUCTION PURPOSES.

<p>COLBY CO. ENGINEERING 47A YORK STREET, PORTLAND MAINE</p>			
<p>NEW CUBICLE FIT-OUT/ OFFICE EXPANSION</p>			
<p>GENERAL NOTES, ABBREVIATIONS, DETAILS AND SYMBOLS</p>			
<p>0 ISSUED FOR BIDDING</p>	<p>MAB</p>	<p>CBC</p>	<p>08/28/17</p>
<p>REV</p>	<p>DESCRIPTION</p>	<p>DWN</p>	<p>APP DATE</p>
<p>SIZE: ANSI D</p>	<p>DATE: AUG 2017</p>	<p>PROJECT NO: 262.002.001</p>	<p>DRAWING NO: A-001</p>
<p>DES BY: MAB</p>	<p>DWN BY: MAB</p>	<p>SHEET 3 OF 19</p>	<p>CKD BY: BLB</p>

X:\262 Colby Company\262.002.001 - Office Renovation 2017\Drawings\Sheets\A-001.dwg - 8/28/2017 11:31 AM - ZACH JONES